

CE



Juice Machine

Instruction

Please read the instructions carefully before using the machine.

CATALOGUE

1. Purposes and features.....	1
2. Main technology parameters.....	2
3. Installing Methods and Notices	3
4. <i>Use methods</i>	3-4
5. Cleaning.....	5-6
6. How to remove the troubles	6
7. <i>Parts List</i>	7-8
8. Parts Dismounting	9

Instruction of cold-hot juice dispenser

Thanks for your choice and using LY J, LYP-1 OL-12L-18L-20L-50L series cold-hot juice dispenser to ensure that you can use normally and effectively, we supply the instruction as follows:

1. Before using the juice dispenser, please read the instruction first and master the operation methods.
2. Please use it according to the performance parameters defined on the voltage, power and the relative supply power cable.
3. Please pay attention to the direction for the materials, which will not influence the normal use.
4. To protect the customer's health, please wash the juice dispenser.

1. Purposes and features

The cold-hot juice dispenser is manufactured by us based on absorbing the technologies from home and abroad. It can make the various beverage and juice to be delicious liquid cold and hot drink. It is used widely in the restaurant, hotel, entertainment sites, cold-hot drink house, and usually, it is popular in the common drink booths.

It has reasonable configuration, excellent performance, pretty appearance, and simple operation. The main parts are made of the stainless copper and innocuous plastics. It adopts automatic control of the temperature to make cold or hot drink, magnetization and the spewing fixture to make the even temperature and improve the refrigeration and defrosting effect. Two containers or three containers juice dispenser can sell two or three different kinds of juice at the same time, which is an ideal appliance for consumers (1 juice dispenser, 2 purposes), and can be used all year.

2. Main technology parameters

Model	SSNC			
Capability	18L	18LX2	18LX3	50LX1
Power Supply	EUR:220-240V/50Hz (60Hz) USA:110-120V /60Hz			
Power	Cold 200W	Cold 300W	Cold 350W	Cold300W
Cold-beverage temperature	7-12°C	7-12°C	7-12°C	7-12°C
Machine size	345X445X700 mm	460X445X700 mm	710X445X700 mm	550X545X735 mm
Weight	20kg	28kg	39kg	25kg

Model	LRYJ			
Capability	18L	18LX2	18LX3	50LX1
Power Supply	EUR:220-240V/50Hz (60Hz) USA:110-120V /60Hz			
Power	Cold200W HOT500W	Cold300W HOT1000W	Cold350W HOT1500W	Cold300W HOT600W
Cold-beverage temperature	7-12°C	7-12°C	7-12°C	7-12°C
Hot-beverage temperature	52-58°C	52-58°C	52-58°C	52-58°C
Machine size	345X445X700 mm	460X445X700 mm	710X445X700 mm	550X545X735 mm
Weight	20kg	28kg	39kg	25kg

Model	SSNC		
Capability	10LX2	10LX3	10LX4
Power Supply	EUR:220-240V/50Hz(60Hz) USA:110-120V /60Hz		
Power	Cold 200W	Cold 300W	Cold 350W
Cold-beverage temperature	7-12°C	7-12°C	7-12°C
Machine size	310X450X660 mm	425X450X660mm	565X450X660 mm
Weight	20kg	29kg	32kg

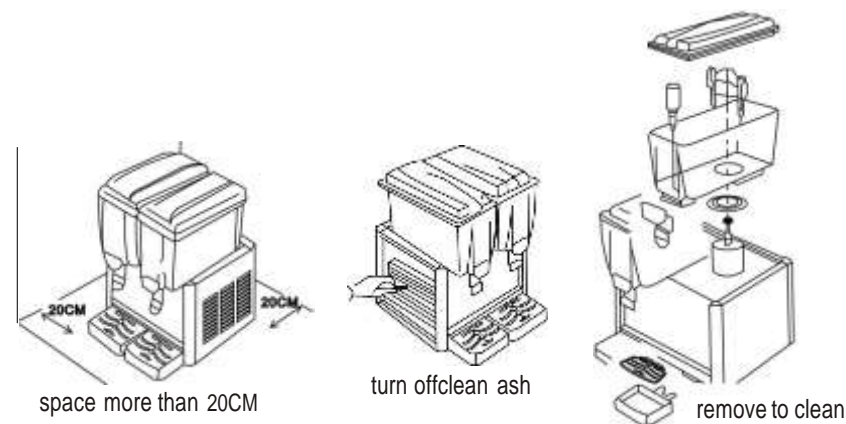
Model	LRYJ		
Capability	10LX2	10LX3	10LX4
Power Supply	EUR:220-240V/50Hz (60Hz) USA:110-120V /60Hz		
Power	Cold200W HOT500W	Cold300W HOT1000W	Cold350W HOT1500W
Cold-beverage temperature	7-12°C	7-12°C	7-12°C
Hot-beverage temperature	52-58°C	52-58°C	52-58°C
Machine size	310X450X660 mm	425X450X660 mm	565X450X660 mm
Weight	20kg	29kg	32kg

Model	LYJ		
Capability	9LX2	9LX3	9LX4
Power Supply	EUR:220-240V/50Hz(60Hz) USA:110-120V /60Hz		
Power	Cold 200W	Cold 300W	Cold 350W
Cold-beverage temperature	7-12c	7-12c	7-12c
Machine size	310X450X660 mm	425X450X660 mm	565X450X660 mm
Weight	20kg	29kg	32kg

Model	LRYJ		
Capability	9LX2	9LX3	9LX4
Power Supply	EUR:220-240V/50Hz(60Hz) USA:110-120V /60Hz		
Power	Cold200W HOT500W	Cold300W HOT1000W	Cold350W HOT1500W
Cold-beverage temperature	7-12°C	7-12c	7-12c
Hot-beverage temperature	52-sac	52-sac	52-sac
Machine size	310X450X660 mm	425X450X660 mm	565X450X660 mm
Weight	20kg	29kg	32kg

3. Installing Methods and Notices

1. To install it ,please choose the site which is flat ,fixable and can avoid the direct sunshine in
2. Around the machine, should have 150mm up room to make the air circulating and make sure the machine can run effectively .
3. Before installing it, please check the supply power whether confirms to the requirements or not. The power supply cable is not too thin or too lang .The cross section of cable should be 1.5-2.5mm, valtage is mounted on the fixed position with fuse which will the users safety, it must have the reliable grounding . The socket should be mounted on the fixed position with fuse which will keep the machine running safety .



4. Use methods

A. How to use the cold beverage machine

1. To fall the prepared beverage into the crock, the height of it is should not exceed the standard height(10L-12L-8L-20L-50L), otherwise, the beverage will flow into the churn-dasher from the dasher tube, which will make the dasher burn.
2. The temperature of the beverage should not too high(no exceed 35c), otherwise, it will make a bad effect for refrigeration.
3. Plug in the supply power to the 3 holes socket, the grounding hole should connect with the protectable wire or fixture to ensure the safety.
4. .To turn the switch on the position of refrigeration, press down the refrigeration switch, the compressor fan starts running and refrigeration system starts working. Then start the dasher to mix or start the spewing switch to spew.

5. When the beverage become to the suitable temperature ,please make the cup against the push board lightly, the beverage will flow into the cup from the outlet mouth.

6. When the temperature reduces to the certain degree, the refrigeration will stop running because of the influence from the temperature controller. And when it increases, it will start automatically again.

7. It should restart after 5 minutes if it turn off suddenly or stop temporarily, otherwise, it will damage the compressor.

B. How to use the hot beverage machine

1. Plug in the supply power to the 3 holes socket, the grounding hole should connect with the proteefable wire or fixture to ensure the safety.

2. To turn the switch on the position of refrigeration, press down the refrigeration switch, the heater starts running and refrigeration system starts working .Then start the dasher to mixture.

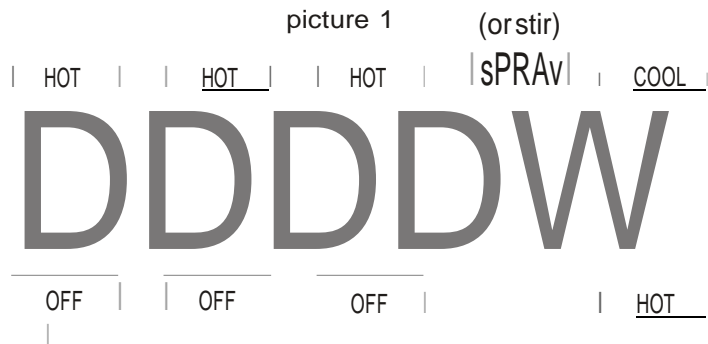
3. When the beverage become to the proper temperature, please make the cup against the push board lightly, the beverage will flow into the cup from the outlet mouth.

4. The heater can not be burnt without water, usually the beverage in the container should be not less than 6L.

5. When the temperature increase to the certain degree, the refrigeration will stop running because of the influence from the temperature controller (the heating light is out) . And when it reduce, it will start automatically again (the heating light is on) .

6. To ensure the clean and beautiful of the cold-hat beverage, the user should clean the beverage crocks everyday.

7. We make the machine according to the quality standard strictly .To use ,repair and maintain it correctly can prolong its life .If any problems, please make some repairs on spot and resolve them .If some problems on the refrigeration system, please ask the special persans to repair it.



5. Cleaning

1. Please wash the machine on time, in order to stay healthy

2. Turn all the power off

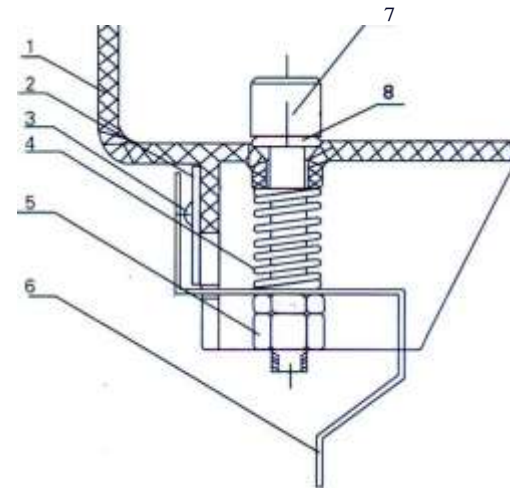
3. Let the remaining liquid out of cylinder ,then remove the cylinder <just hold and move slowly >

4. Cleaning the spout:

Unscrew the nut from the bottom of discharge mouth or turn the discharge mouth 90° , remove the discharge mouth (picture 2)

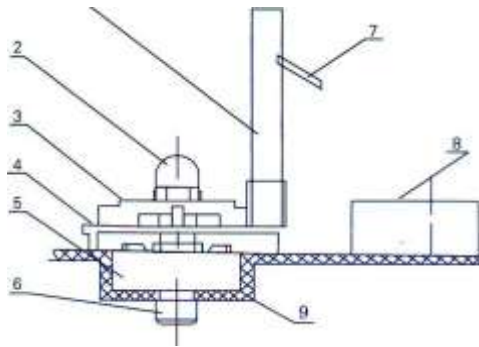
5. Cleaning cylinder:

Unscrew the nut 2 > ,then remove the gasket 3 > , pump < 4 > and impeller. (Picture 3)



picture 2

No	Part
1	Cylinder
2	Plate
3	Self-tapping screws
4	Spring
5	Nut
6	Valve plate
7	Spool
8	Gasket



picture 3

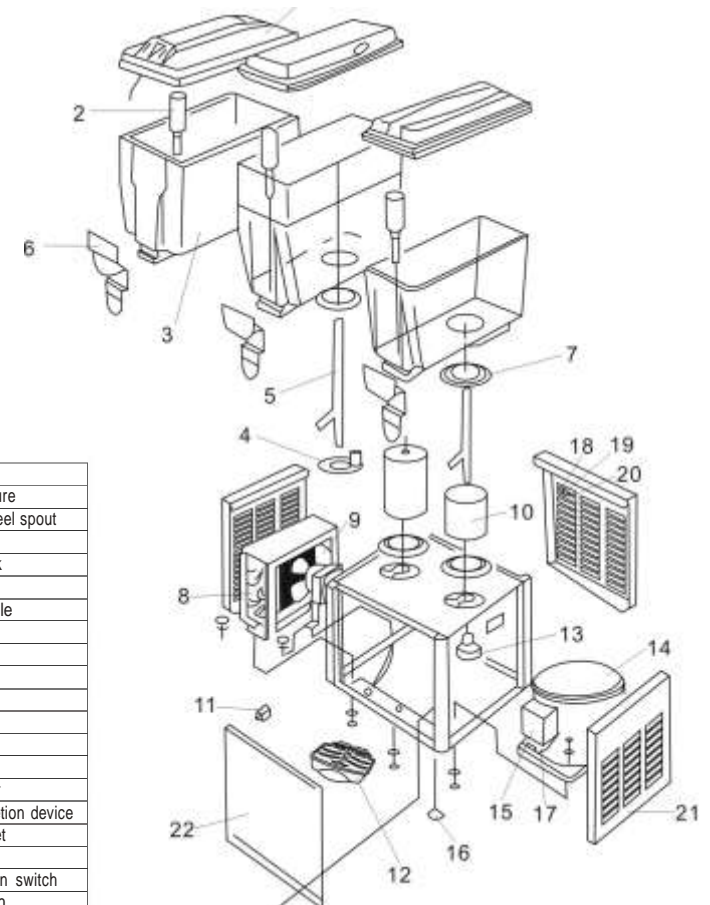
No	Part
1	Spraypipe
2	Nut
3	Gasket
4	Pump
5	Impeller
6	Positioning axis
7	Spray manifold
8	Evaporator
9	Cylinder

6. How to remove the troubles

Troubles	Causes	Repair methods
Compressor stops Working	<ol style="list-style-type: none"> 1.The supply power off or not connected 2.Switch damaged 3.Circuit trouble 4.Over load and the protector broken 	<ol style="list-style-type: none"> 1. Check the supply power and socket 2.Replace the switch 3.Check and repair 4.Check and replace
Compressor runs but no refrigeration	<ol style="list-style-type: none"> 1. Capillary stop 2. The refrigeration fluid leaked 3. The electrical broken 	<ol style="list-style-type: none"> 1. Replace the capillary or dry filter 2. Check the systems and add the medicine 3.replace the electrical machine
Winnowing water abnormally	<ol style="list-style-type: none"> 1. differences in the pump inside 2.impeller and holes damaged 3.circuit damaged 4.big clearance between the impeller and crock 	<ol style="list-style-type: none"> 1.clean 2.Replace the impeller and pump 3.check and repair 4.adjust the clearance
Crock leaking	Sealing ring old or installed badly	Replace or re-install
Valve leaking	Sealing ring old or installed badly	Replace or re-install

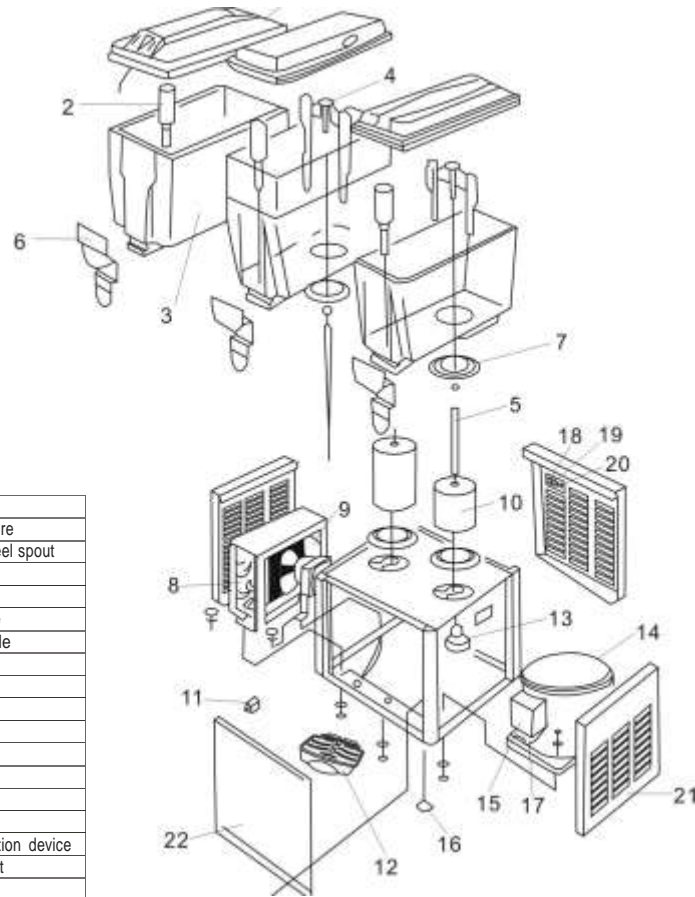
7. Parts List

Sprayjuice machine parts diagram



No	Name
1	Superstructure
2	Stainless steel spout
3	Cylinder
4	Spray Block
5	Spraypipe
6	Wafer handle
7	Ring
8	Condenser
9	Fanmotor
10	Evaporator
11	Thermostat
12	Watertrav
13	Spraymotor
14	Compressor
15	Filter Protection device
16	Machine feet
17	Startswitch
18	Refrigeration switch
19	Sorav switch
20	Heatina switch
21	Left and right panels
22	Front and rear panels

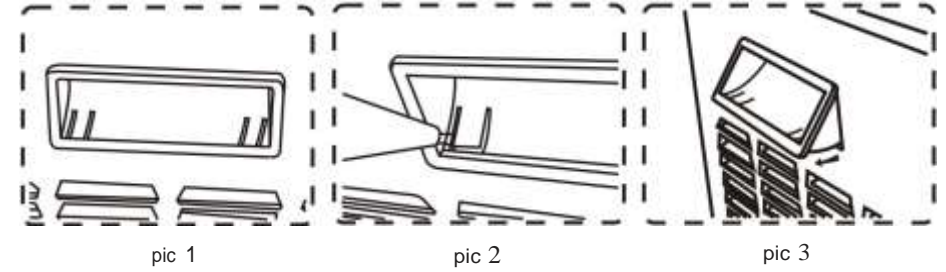
Stir juice machine parts diagram



No	Name
1	Superstructure
2	Stainless steel spout
3	Cylinder
4	Stirring leaf
5	Stirring pole
6	Wafer handle
7	Ring
8	Condenser
9	Fanmotor
10	Evaporator
11	Thermostat
12	Water tray
13	Spray motor
14	Compressor
15	Filter protection device
16	Machine feet
17	Start switch
18	Refrigeration switch
19	Spray switch
20	Heating switch
21	Left and right panels
22	Front end rear panels

8. Parts Dismounting

Panel Dismounting Method

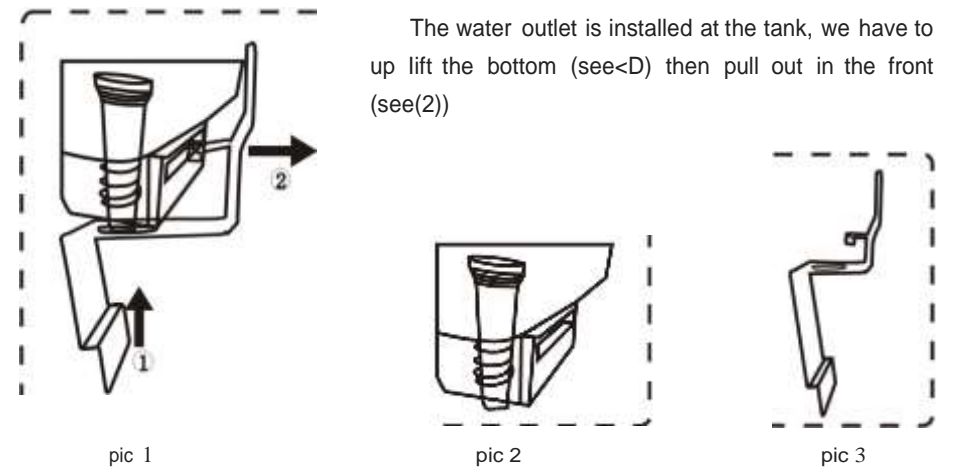


In order to take off the panel, we have to take off the handle first (see pic 1)

Using slot type screwdriver pry up the panel side (see pic 2)

Pry up both side of the handle, then take off the handle from panel

Water Outlet Dismounting Method



The water outlet is installed at the tank, we have to up lift the bottom (see<D) then pull out in the front (see(2))

pic 1

pic 2

pic 3