

HIGH PERFORMANCE MILK SHAKE MACHINE



Model:SPMET1

READ AND SAVE THESE INSTRUCTIONS

Important Safeguards

1. Read all instruction.
2. To protect against risk of electrical shock,do not put motor base in water or other liquid.
3. Under adult supervision is necessary when appliance is used by or near children.
4. Unplug the power cord from the wall outlet when the machine is not in use,before putting on or taking off parts,and before cleaning other than washing the container.
5. Never contact moving parts.
6. Do not operate any appliance with a damaged cord or plug or after the appliance malfunctions or is dropped or damaged in any manner.Call service at once for possible replacement,test and repair,electrical or mechanical adjustment.
7. Do not use outdoors.
8. Do not let the power cord hang over edge of table or counter,or touch hot surfaces.
9. Keep hands and utensils out of the container while motor is running to prevent the possibility of severe personal injury and/or damage to the milk shake machine.A rubber scraper may be used,but only when the blender is not running.
- 10.Please take off the cup after you make sure the blending blade is stopped entirely.

Brief Introduction

1. High industrial motor,special cup for better mixing.
2. Only ON/OFF switch,easily operated.
3. Good quality and durable blades.
4. Stainless steel blend cup,saver and more beautiful.
5. Never operate any appliance with a damaged cord or plug or after the appliance malfunctions or is dropped or damaged in any cases.Call repair service or Professional once for possible replacement,test and repair,electrical or mechanical adjustment.

Operation Instruction

➤ Milk

1. Add some materials:water,sugar and pure milk (powdered milk).
2. Put the blend cup on the bracket of the milk shake machine after putting all well prepared materials in the cup.
3. Connect the electric power source,turn on the switch.
4. Fine blended after about 5 seconds.

Attention:when putting materials,please be with proper capacity of water.

Feature

1. Strong and durable motor,high rotating speed,safe switch.
2. Fine blend for powdered milk,sugar,pure milk,coffee,etc.
3. Quite helpful for commercial and domestic use.
4. Switch: “I” is on,”O” is off.

Instruction

1. Easy operate
2. Strong industrial motor,high performance,safe enough
3. Safety Switch
4. Small size for easy moving
5. Stainless steel cup and aluminum foundation
6. Streamline like and beautiful design
7. Make your life healthier,more comfortable and perfect

Attention

1. Never put any metal things in the cup,such as:knife,fork, soup spoon,etc.
2. Please make sure it's power off first when take the cup for cleaning to prevent from danger.
3. Never use it for cutting something in pieces or blending some solid food that is insoluble in water.
4. Please make sure whether the container is safely connected and fixed with the machine first before starting to work.
5. When it starts to work,because of the high speed of motor,please hold the top cover slightly.
6. When it's opeating,please put prople materials in the cup to prevent from overflow when it's blending.
7. When you would like to pour the food,please turn off the power source firstly,and take off the cup when the motor is stopped running.
8. Please pay attention all the time whether you touch the switch careless before or after the machine works.

Maintainance

1. When maintaining or cleaning,please make sure the outlet is unplugged,and the switch must stay at “off”.
2. Please clean the cup by sponge or cloth carefully,and take it for airing.
3. Please clean the motor base and bearing by dry cloth(NEVER cleaned by water).If it's a little

difficult for wiping, please do it after cleaning by neutral lotion.

Sphere of application

1. materials that is soluble in water.
2. Some soft and small legume

Troubleshooting

When it can't work, please check:

1. whether the outlet is unplugged?
2. whether the fuse or automatic switch is dropped off ?
3. whether it's power off?

If it's all right after checking all, please send it to repair center, don't repair it by yourself.

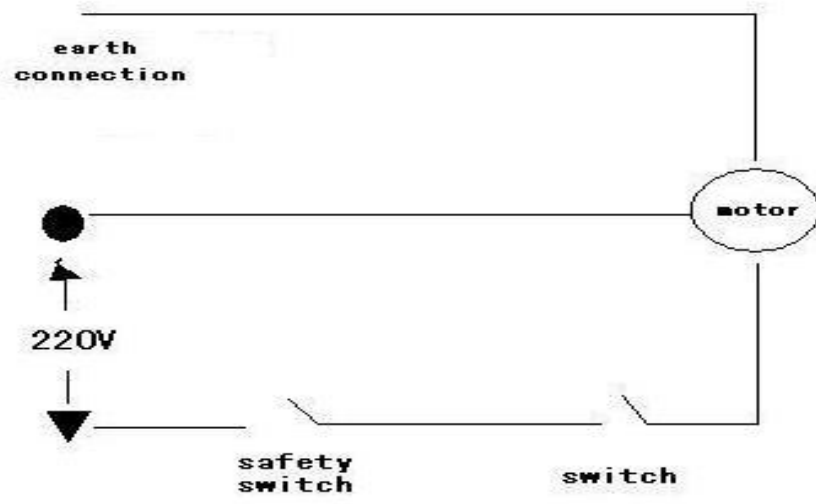
Guarantee

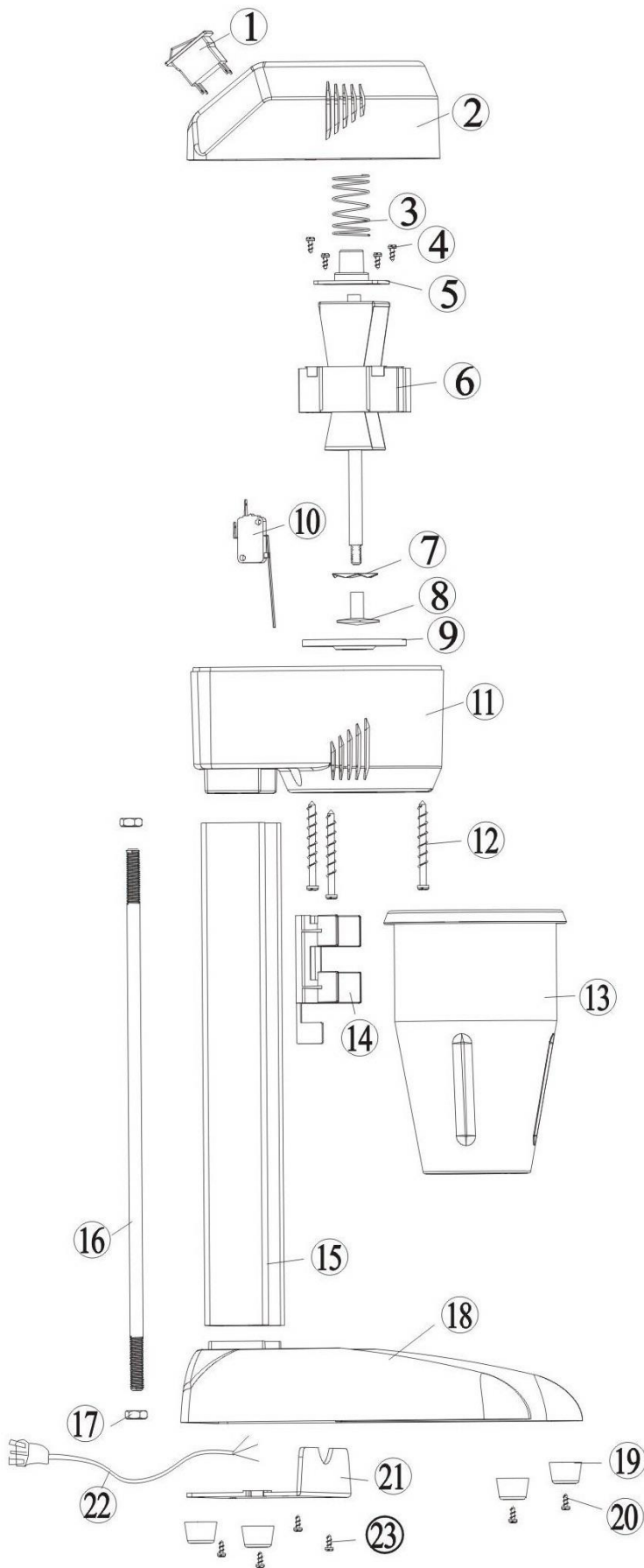
We take the responsibility of free maintenance service within 1 year for this product, but not including damages caused by natural and artificial factors. And the blade, motor carbon brush is perishable articles, it's not included in guarantee as well, it should be paid at a certain range.

Specification

Model	SPMET1
Voltage	230V/50Hz
Capacity	1.0L
Endurance of Container	-40°C-180°C
Power	300W
Weight	3kg
Length of Cord	1.2m
Dimension	H495 x W230 x D230mm
Protector	Safety protector

Electric circuit





- 1.switch
- 2.top cover
- 3.spring
- 4.positioning screw
- 5.spring positioning piece
- 6.motor
- 7.S/S blade
- 8.plastic blade
- 9.white rubber pad
- 10.safety switch
- 11.bottom cover
- 12.cover positioning screw
- 13.S/S cup
- 14.plastic cup bracket
- 15centre shaft
- 16.threaded rod
- 17.threaded rod nut
- 18.Aluminum foundation
- 19.rubber feet
- 20.rubber feet screw
- 21.bottom board
- 22.power cord
- 23.bottom board nut