

**ggm**gastro  
INTERNATIONAL

## **TEA BOILERS**



FULLY AUTOMATIC TEA BOILERS POWERED BY GAS (LPG-NG)  
AND ELECTRICITY

**USER MANUAL AND WARRANTY CERTIFICATE**

(PLEASE READ AND SAVE THIS DOCUMENT)

## PURPOSE OF USE OF THE DEVICE AND GENERAL SPECIFICATIONS:

Tea boilers are devices that provide hot water and brew tea in places where there is generally a high density of work and people. It provides the ability to produce the most ideal, safe, and economical tea for mass consumption.

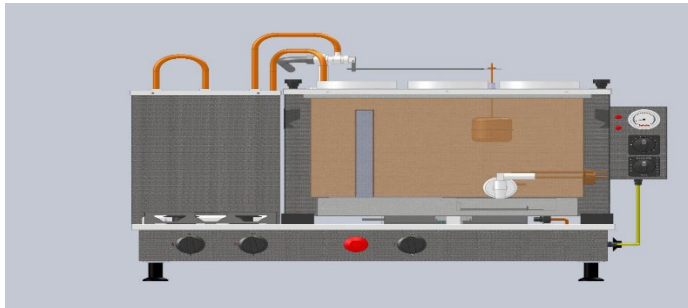
The device generally consists of 4 parts:

**COOKER:** This is the section where the gas connection equipment is located and also serves as a base for the boiler.

**BOILER:** It is the main part where the resistance, tap, and float systems are located, mounted on the control box that houses the hot water tank.

**PURIFICATION:** This is the section through which the water coming from the mains passes and the sediment, chlorine, and hardness level of the water are improved (it cannot prevent limescale alone in boilers that are not cleaned regularly)

**CONTROL BOX:** This is the section where the device on/off switch, thermostat for water temperature adjustment, and thermometer showing the water temperature level are located.



## SAFETY WARNINGS:

1. Be sure to use a grounded socket. The mains power cable should be placed so that it does not trip over people's feet and does not come into contact with hot surfaces. If it is damaged, be sure to contact the authorized service for replacement.
2. This device must be installed in accordance with current regulations and must only be used in a ventilated area. Refer to the instructions before installing and using the device. The flue outlet behind the boiler should not be blocked for the disposition of waste gas.
3. The tap that provides water inlet from the mains should be open without excessive pressure during business hours and should be closed when the workplace is closed, because as water usage generally decreases at night, it may cause the water in your boiler to overflow due to the increase in pressure in the open taps.
4. When cleaning, do not clean with pressurized water or by submerging the boiler in water.
5. When performing maintenance and cleaning, the device must be disconnected from the power source before the operation. Please have it regularly maintained by authorized services.

6. Never operate the device until the water tank fills above the resistance level, otherwise the resistance may burn out.

## INSTALLATION AND USE OF THE DEVICE

The device must be installed by an authorized and specialized service.

After the device is ready for use:

1. The gas valve is opened and ignition is achieved by pressing the lighter button on the boiler until a spark is seen on the pilot.
2. After making sure that the water tank of the boiler is full of water, the gradual switch on the control box is turned to the gas and electricity position.
3. The thermostat is set to 100 degrees (the boiling point of water). For the water to remain at a constant temperature and for the automatic heat system to work, the thermostat must be set to 100 degrees.
4. The temperature of the water is checked with the thermometer. When it reaches 100 degrees, your water is ready to brew tea.
5. Signal lamps: The red lamp symbolizes that electricity is on, yellow lamp symbolizes gas on.

## SHUTTING THE DEVICE OFF:

1. Turn off the switch in the control box.
2. Check and close the gas valves.
3. Turn off the lpg hood or natural gas valve.
4. Close the water inlet tap.

## MAINTENANCE AND CLEANING:

1. Since mains water contains lime, lime will form in the boiler over time if it is not cleaned regularly. If the lime accumulated in the boiler is not cleaned, it will turn into sediment over time, causing you to consume more energy and may cause punctures or cracks in the water tank over time.
2. To extend the lifespan of your tea kettle and ensure healthy use, our recommendation is to descale it every 30 days on average. For this, you can use our services or do it yourself with a special descaler agent recommended by our company.
3. 3. After draining the water from the boiler, turn off the tap and pour half of the descaler agent that we have provided for you in 5-liter drums into the water tank. Move the boiler left and right so that the descaler agent penetrates all surfaces. This process should take approximately 30 minutes.
4. After the lime scale is dissolved, the limescale remover should be disposed of and the reservoir should be washed thoroughly with clean water. Then the first boiled water should be disposed of.
5. Gloves should be used during the procedure and contact with the body and especially the eyes should be avoided. It should not be done in a closed area and a mask should be used.
6. In addition, having your product regularly maintained by authorized services, apart from cleaning, will provide you with a longer period of use, a hygienic, healthy tea, and prevent service costs and time loss.

**TECHNICAL SPECIFICATIONS**

**KTKCI22**

**ELECTRIC POWER:2 ,5 KW**

**ANMA ISI YÜKÜ G20: 2.94kw/20 mbar**

**KTKCA**

**ELECTRIC POWER:2 ,5 KW**

**ANMA ISI YÜKÜ G20: 2.94kw/20 mbar**

**KTKCI33**

**ELECTRIC POWER:2 ,5 KW**

**NOMINAL HEAT POWER G20: 5.43kw/ 20 mbar**

**KTKCA33**

**ELECTRIC POWER:2 ,5 KW**

**NOMINAL HEAT POWER G20: 5.43kw/ 20 mbar**