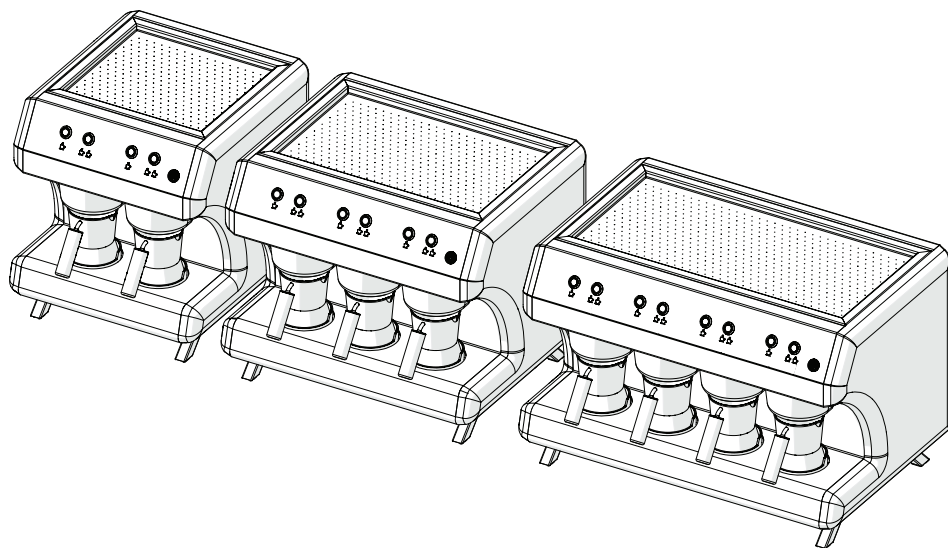


# ggm gastro

## TURKISH COFFEE MACHINE User guide

Read it before starting it.  
There are important explanations for you.

TKKMAT2 TKKMAT3 TKKMAT4



# ingredients

Technical Information Tables .....	3
General Warnings and Security Measures.....	4-5-6-7
Setup.....	8
Quantities and sizes of coffee.....	9
Operation and Use .....	10
Basic and Technical Characteristics.....	11
Cleaning and Maintenance.....	12
Spare Parts List .....	13-14-15
Electrical Technical Data Sheet and Information.....	16
Electrical Connections.....	17-18-19-20-21-22-23



When you want to dispose of the product, of course, it is the social responsibility of individuals to deliver it to valid collection points that do electrical or electronic recycling. In this way, by ensuring that the product is disposed of correctly, you help to prevent possible negative consequences related to the environment and human health. Recycling of materials will help protect natural resources. For more detailed information about the recycling of this product, please contact the municipality, household waste disposal service or the store where you purchased the product.



The packaging materials of the product are made of recyclable materials in accordance with the national environmental legislation. Do not dispose of packaging materials together with household waste or other waste. Take these materials to the recycling points determined by the local authorities.

## Technical Information Tables

### GENERAL INFORMATION

Model	<b>TKMMAT2</b>	<b>TKMMAT3</b>	<b>TKMMAT4</b>
Product Dimensions (cm)	380×410×410	510×410×410	640×410×410
Net Weight(kg)	17	21,5	26
MOQ of Coffee Pot	2	3	4
Number of Servings	2 x 2	3 x 2	4 x 2
Storage Capacity (lt)	0.8 Liters	1.2 Liters	1.5 Liters
Water Pressure	Max. 0.2 MPa	Max. 0.2 MPa	Max. 0.2 MPa
Water Inlet	3/8"	3/8"	3/8"

### PACKAGE INFORMATION

Package Information	A: 460 mm	A: 590 mm	A: 640 mm
	B: 530 mm	B: 530 mm	B: 530 mm
	C: 490 mm	C: 490 mm	C: 490 mm
Packed weight(kg):	23	29	35
Volume(m3)	0.12 m3	0.15 m3	0.17 m3

### ELECTRICAL INFORMATION

Voltage	230 V	230 V	230 V
Electrical power	1,400W	2,000W	2,600W
The Ampere Drawn by The Device	5.4 A	8.1 A	10.7 A
Cable Cross Section	3 x 1.5 mm <sup>2</sup> TTR (with Plug)	3 x 1.5 mm <sup>2</sup> TTR (with Plug)	3 x 1.5 mm <sup>2</sup> TTR (with Plug)
Frequency	50-60 hz	50-60 hz	50-60 hz
Protection class	IPX64	IPX64	IPX64
Min/max internal humidity	70%/85%	70%/85%	70%/85%
Type of control	Manual / Signal / Audible	Manual / Signal / Audible	Manual / Signal / Audible

## General Warnings and Safety Precautions

Dear customer, we wish you to use your product, which is manufactured by undergoing quality controls in a careful and detailed manner, in the best way. We strongly recommend that you read the entire user manual before using the product. This guide will help you use the product quickly and safely.



The following safety instructions will help you protect yourself from the risk of personal injury or damage to your product. If these instructions are not followed, the product will not be covered by the warranty and no responsibility will be accepted from the point of view of human health.

- Make sure that flammable materials that may cause a fire are not located near the device.
- \* Keep the device away from steam sources and be careful not to use it in extremely steamy environments.
- Use the coffee pot supplied with the device.
- Do not use the coffee pot on any heater other than the appliance (January, etc.).
- Make sure that there are no spoons, etc. objects in the coffee pot.
- Do not put any substances other than hot water and water in the water tank strictly.
- Make sure that there is no water coming into the device from any direction (bottom, top or sides).
- Installation and maintenance of the device, it should only be carried out by qualified personnel. Contact an authorized representative authorized by the manufacturer. Otherwise, your device will be out of warranty.
- \* Replace the damaged parts of the device with the original spare parts. The manufacturer undertakes that the device can be used safely only when these parts are used.
- Children and uninformed people should not be allowed to use the device. It should be used by people who are educated about the risks associated with the device.
- Keep the device under supervision while it is working.
- Turn off the device in case of malfunction or malfunction.
- The connection of the device must be located on the ground line and the leakage current relay.
- To clean the device, use chlorine (sodium hypochlorite, hydrochloric or muriatic acid, etc.) containing products (even if diluted) do not use. Do not use metal tools to clean the rust. Wipe it first with a damp and then with a dry cloth.
- Do not keep flammable liquids near this device.
- \* The coffee pot and the lower cooking surface on which it is placed heat up during use. For this reason, do not contact the cooking surface and the coffee pot during and after use (until it cools down). Avoid contact with hot surfaces and use the coffee pot only by holding it by the handle.
- Do not clean the device directly with water jets or water vapor.
- Do not allow coffee to form deposits on the device, do regular cleaning.
- Use a suitable fuse on the line to which the device is connected. You can find the values from the label on the device or from the table in the manual.
- The device must be operated in an installation on the ground line; the device should not be connected when there is no ground line.
- It is recommended that the device be checked by an authorized person. Call a service for this purpose at least every 12 months.

## General Warnings and Security Measures



- Always follow the applicable safety instructions.
- Keep the user manual in a place where you can easily access it for future use, understanding its importance, and do not lose it.
- The manufacturer reserves the right to make changes to the product. It clearly Decodes the differences between the models.

In any case, contact your authorized dealer for your problem.



It is a warning sign indicating that attention should be paid for safe use.



High temperature is a warning sign to act according to this environment.



It is a warning sign indicating that attention should be paid for safe use.



It is a warning sign indicating an electrical hazard.

- Stainless steel material is used in the device.
- The device is designed in accordance with the industrial type use within the scope of the low voltage directive (LVD 2014/35ED).
- The device is designed for industrial use in accordance with the electromagnetic compatibility directive (EMC2014/30EY).
- Your device is manufactured for use in industrial working environments; restaurant, restaurant, fast food, canteen, tourist facilities, cafeteria, hotel and other accommodation environments.

## General Warnings and Security Measures



NOT SUITABLE FOR OUTDOOR USE



The Maximum And Minimum Ambient temperature For Proper Operation is Between 10 Degrees And 23 Degrees Should be.



In Case of Freezing, It can Operate the Device Safely After Waiting for 2 Hours at a Temperature of 20 Degrees



Turkish Coffee Is Not Suitable For Use In Different Types of Coffee Teeth.



Do not move the device without emptying the water tank.



A Warning To Prevent Spillage on the Connectordir

This device is designed for use at home and in similar applications, such as:

- staff kitchen areas in shops, offices and other working environments;
- by customers in farmhouses, hotels, motels and other accommodation-type environments; bed and breakfast-type environments

If the manufacturer wants to limit the use of the device to less than the above, this is clearly stated in the instructions

The device containing a device input and intended to be immersed for cleaning, the instructions include the following ;

- the connector must be removed before cleaning;
- the device input must be dried before the device can be used again.

The instructions for devices that are normally cleaned after use and are not intended to be submerged in water for cleaning specify that the device should not be submerged in water. This requirement normally applies to coffee machines, cooking pans, milk kettles, pressure cookers, steam cookers, slow cookers, soy milk producers and yogurt machines.

The instructions for use of devices intended for use with a thermostat-containing connector specify that only the appropriate connector should be used.

The instructions for all devices include :

- details on how to clean surfaces in contact with food;

The instructions for coffee machines with surfaces made of glass, ceramic or similar material that form part of the housing of the sections under tension will contain the following items

"If different rated voltages or different rated frequencies are marked, the instructions indicate what should be done to adjust the device."



-Always make the installation of the product and the electrical connections to the authorized service. The manufacturer is not responsible for any damage to the product caused by operations performed by unauthorized persons.

- Please note that the connection lines are made correctly and completely before installation. If the assembly cannot be performed due to a malfunction caused by the absence of any; service fee it will be requested from the customer.



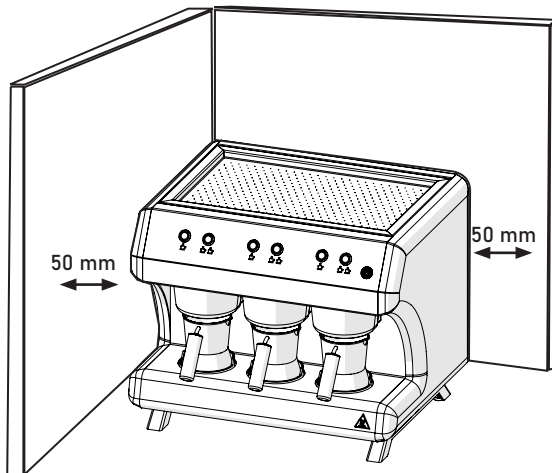
- Before operating the device for the first time, after removing the protective nylon on the device, wipe it first with a damp and then dry cloth.

-Children and uninformed people should not be allowed to use the device.

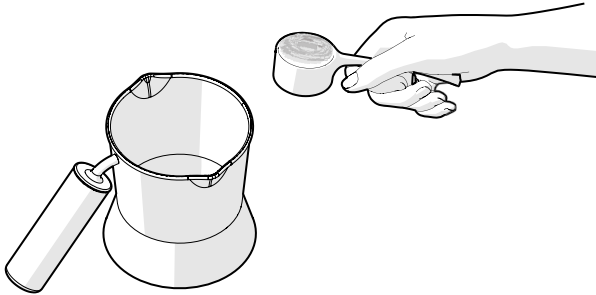
- Place the device in an upright position and on a stable, flat, clean, dry and non-slip surface.










Keep a sufficient distance between the device and the walls.  
Dec.







You can make sparkling Turkish coffee according to your taste by using the measurements indicated in the table. The measurements indicated below are only a guide. You can adjust these Measurements according to your personal preferences.

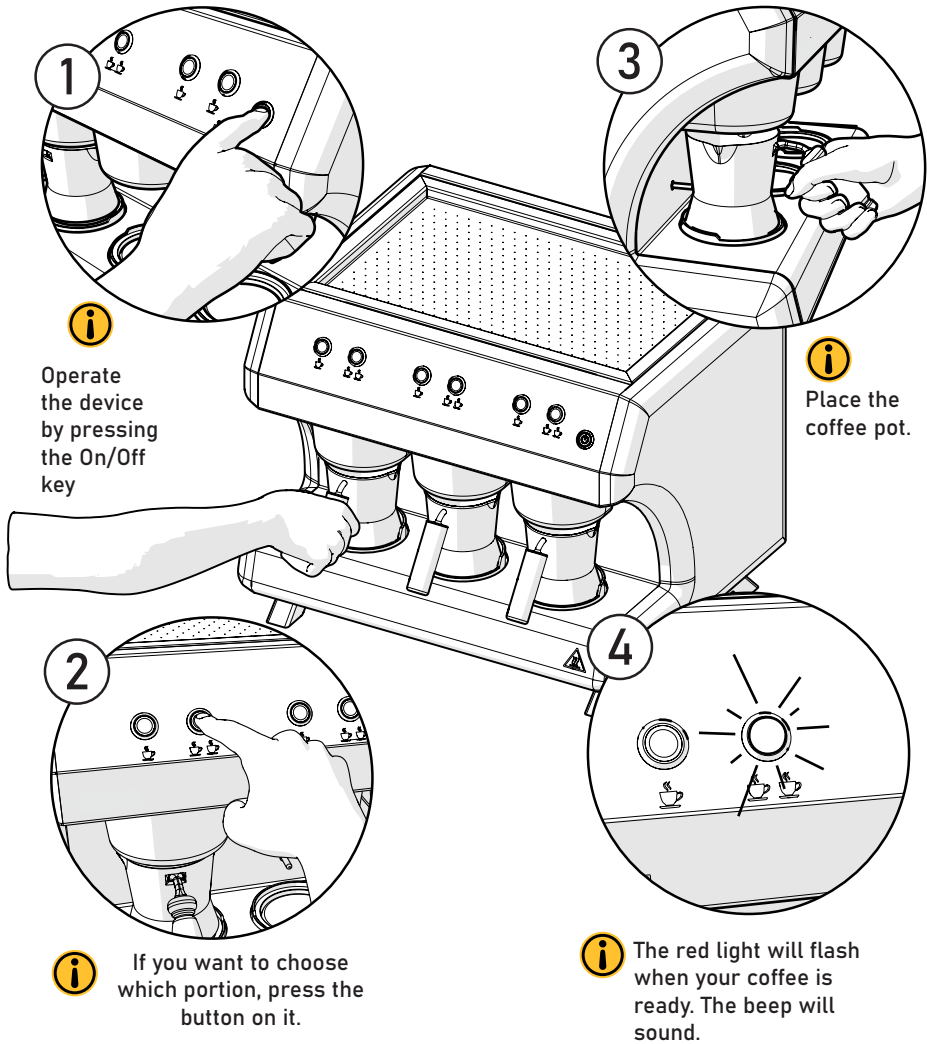
Recommended material scales for preparing Turkish coffee for 1 person				
	Simple	Low Sugar	Middle	Sugary
Coffee	 Scale	 Scale	 Scale	 Scale
Sugar	-	 Half Scale	 Full Scale	 2 Full Scale



If the coffee cooking is canceled, it will be interrupted. For re-cooking, you need to prepare the coffee from the beginning.

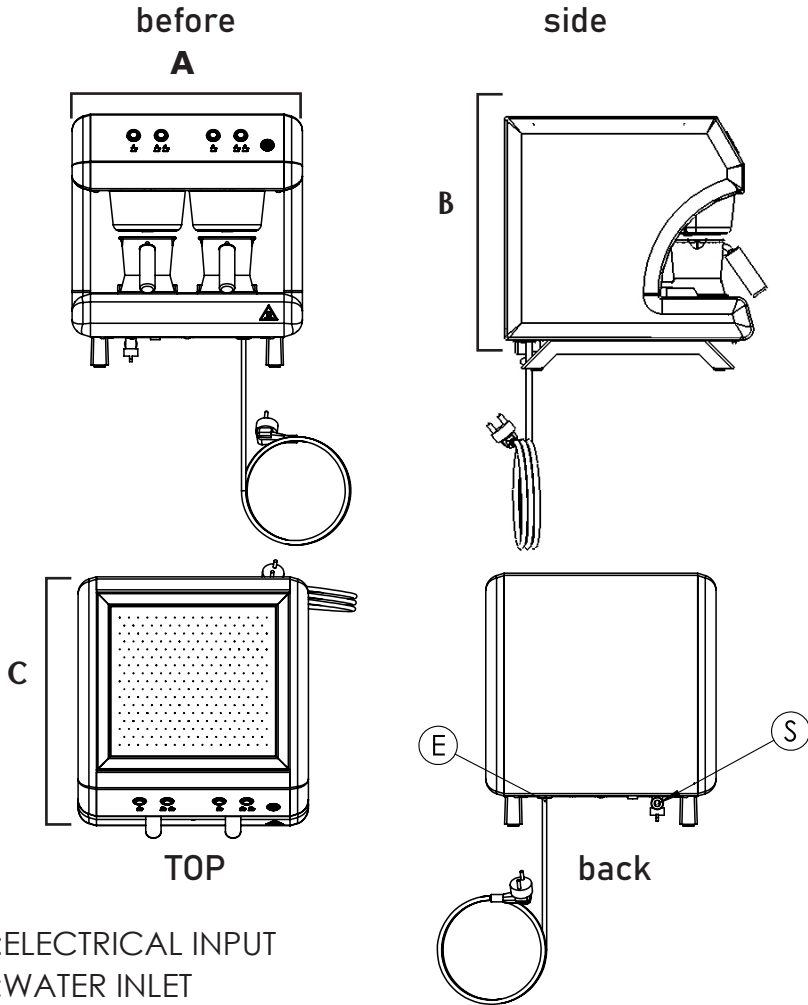
By connecting the carapace pump directly to the carapace and the device, you can ensure that the water reservoir inside the device is filled automatically.

Contact the authorized service center for procurement and connection.



- Do not touch hot surfaces while resistance is running.
- Do not remove the coffee pot before the cooking process is finished.
- When you want to cancel cooking, press and hold one porsiyon and two servings keys at the same time.

Dimensions of the Model

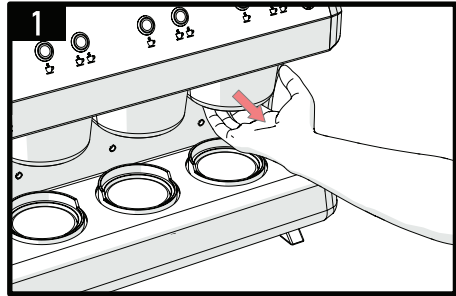


PRODUCT CODE	A	B	C
TKMMAT2	380 mm	410 mm	410 mm
TKMMAT3	510mm	410 mm	410 mm
TKMMAT4	640 mm	410 mm	410 mm

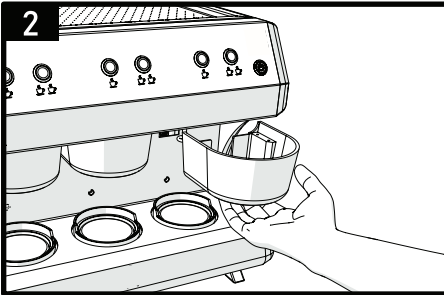
## Cleaning and Maintenance



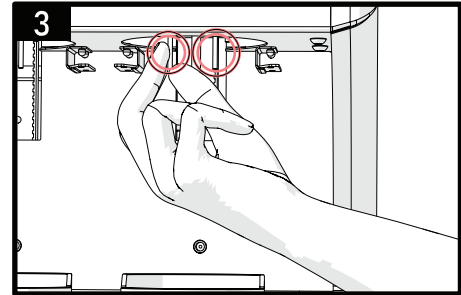
- Do not proceed to the cleaning process without unplugging the device.
- Do not clean the device before it cools down.
- Do not use corrosive chemicals and steel cleaning materials when cleaning.
- Make sure that there is no liquid contact with the area where the electronic components of the device are located.
- Do these operations on a daily basis.



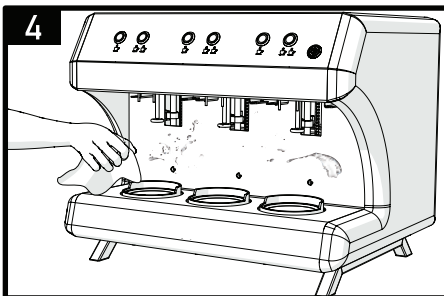
Pull Off the Protection Cover as shown in the Figure.



Take off the protection and clean it up.



Do not move the probes of the device.



Wipe with a damp cloth.

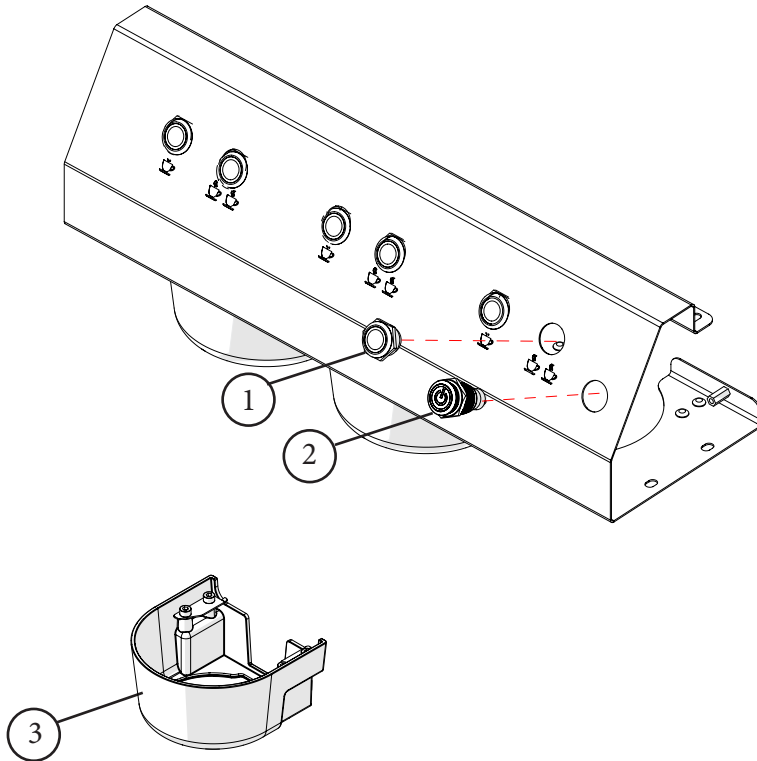


Turkish coffee machine Copper coffee pots need to be tinned at least once a year



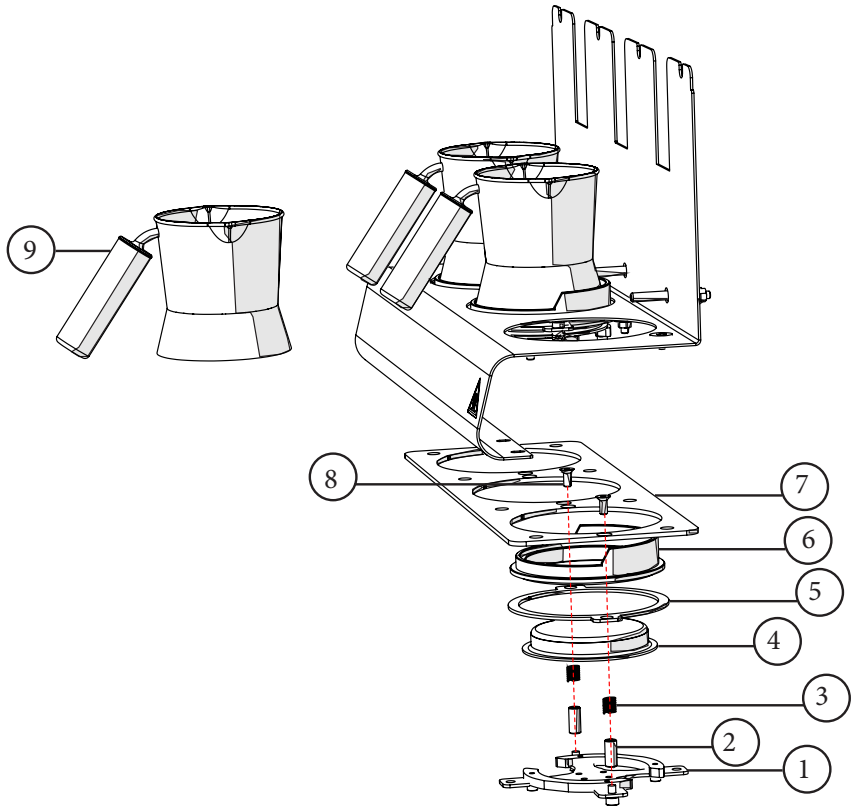
- Clean the mixer of the device with the cleaning mode.
- do not clean the mixer and contact sensors manually.
- Do not touch hot surfaces while resistance is running.

## TKMMATT



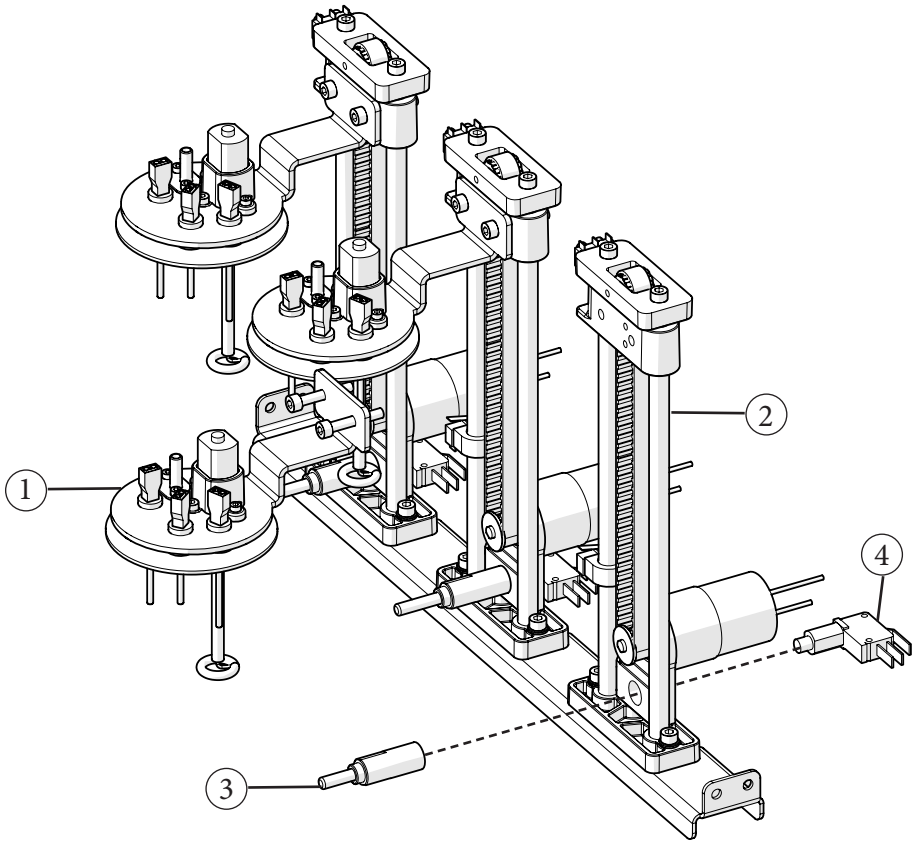
no	PART NO	explanation
1	P118609	White Metal Spring Tact Button with Ring Light
2	P099957	On-Off Button
3	M035999	The upper hiding part of the coffee pot

TKMMAT



no	PART NO	explanation
1	P0113168	Sheet
2	P097719	Coffee Pot Base Spring Action Fixing Pin
3	P107277	Resistance Part Spring
4	P095500	Bottom Coffee Pot Heater
5	P112869	Sheet
6	P107914	Coffee Pot Seating Slot
7	P113546	Sheet
8	P350512	Full Tooth Imbus Bolt Rustm
9	P095273	Copper Coffee Pot

## Spare Parts List



no	PART NO	explanation
1	M038126	Elevator Printing Group
2	M038856	Elevator Mechanism
3	M040066	Coffee pot timer
4	P006063	coffee pot detection Switch

Product Code	Power	Supply Voltage	Cable Cross Section H05RR - F	Frequency	Insurance
TKMMAT2	1,253 Kw	230 V	3x2,5 TTR	50-60 hz	16A
TKMMAT3	1,863 Kw	230 V	3x2,5 TTR	50-60 hz	16A
TKMMAT4	2,473 Kw	230 V	3x2,5 TTR	50-60 hz	16A



- The device must be connected to the electrical installation in accordance with the electrical standards of the country you are using.
- Make the ground line of the device through a suitable automatic fuse and fix the fuse in question in a place where you can easily access it. Connect your insurance according to the values in the table.



- The given cable cross-section values are valid for the installation and this device.
- It is necessary to have a ground line and a leakage current relay in the electrical installation to be pulled.
- The withdrawal of the electrical installation belongs to the customer.

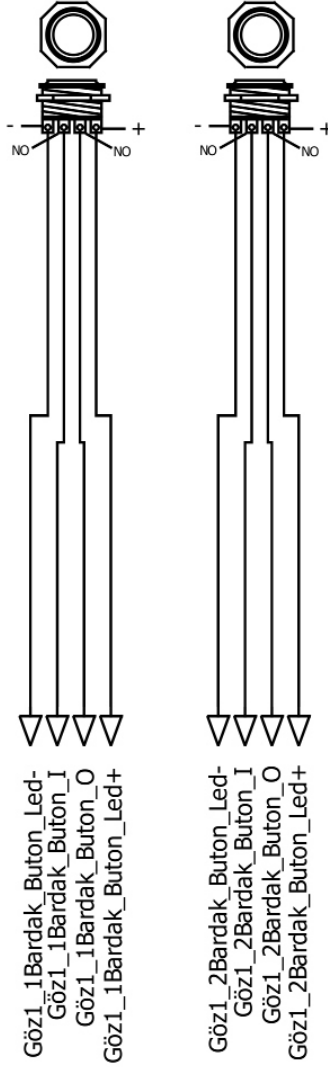
**What you will pay attention to before cleaning and maintenance.**



- Turn off the main supply electrical connection before cleaning the device. Wait for the device to Cool down.
- Definitely do not do maintenance while there is electricity on the device.
- Wipe the device with a cloth soaked in warm and soapy water.
- Acid-containing chemicals should definitely not be used on the stainless surface of the device during cleaning.
- Never clean your device with pressurized water or pressurized steam. Otherwise, you may cause a failure of the resistor and electrical device.
- Do not leak water inside while cleaning the device.
- If a dangerous situation is detected on the device, notify the authorized service.
- For cleaning stainless steel, do not use general steel abrasives, scrubbing pads, brushes, or detergent products containing abrasives.

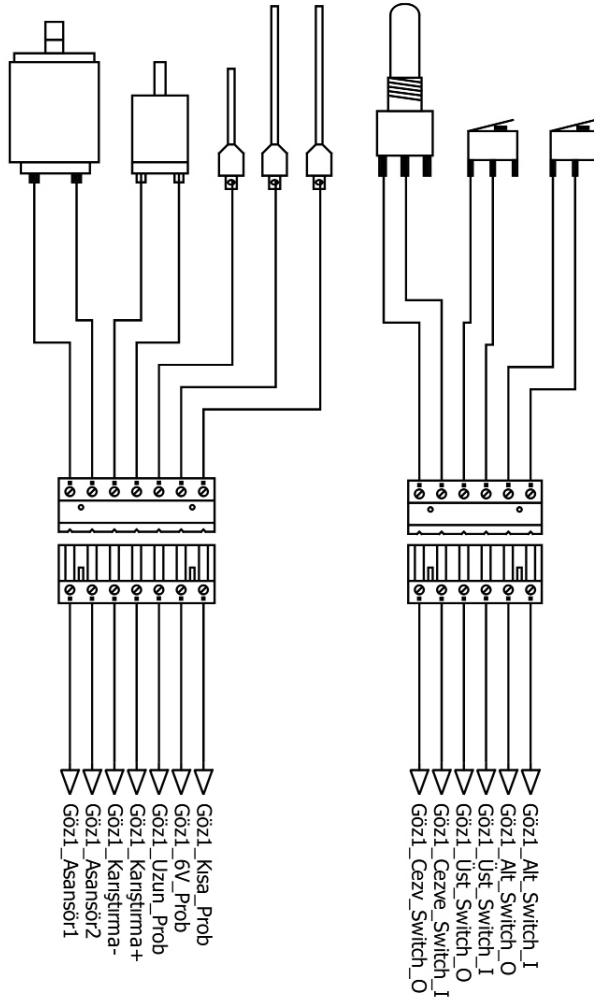


TKMMAT



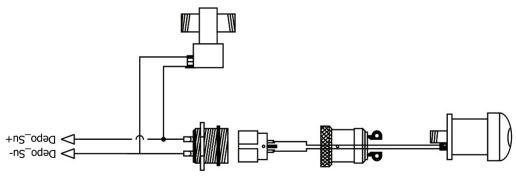
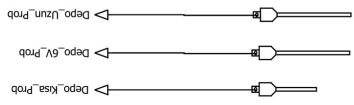
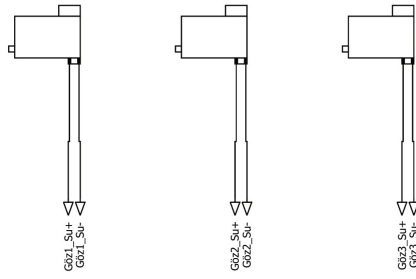
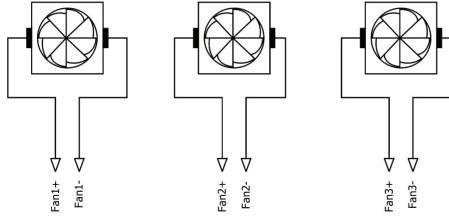
TKMMAT BADGER BUTTON  
ELECTRICAL CONNECTIONS

TKMMAT

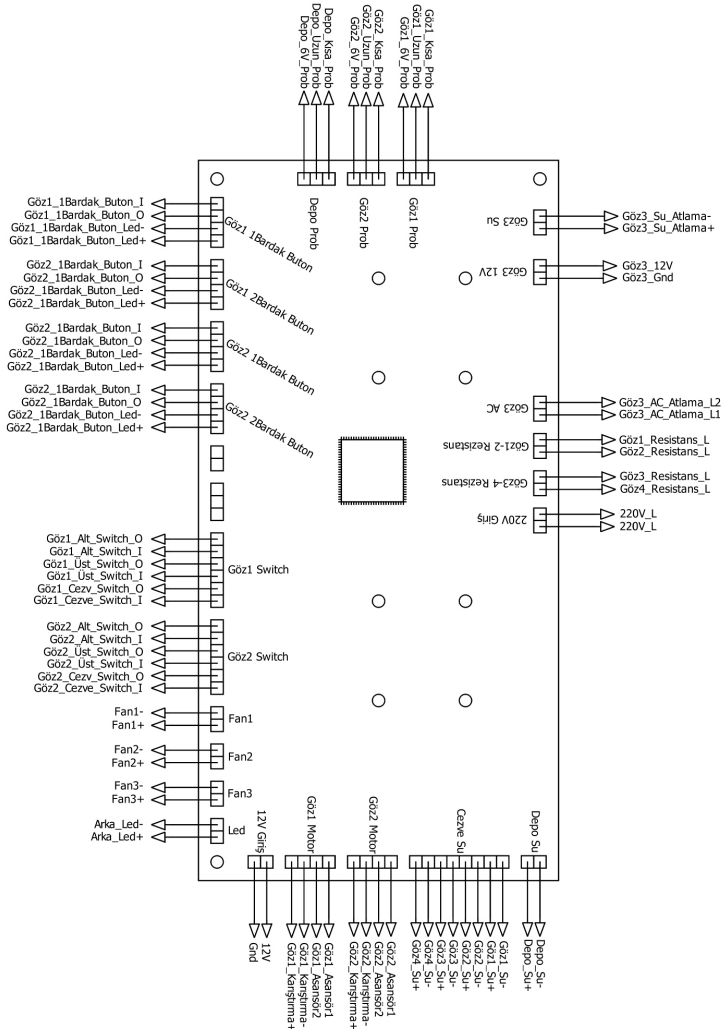


TKMMAT MOTORS AND PROBES  
ELECTRICAL CONNECTIONS

TKMMAT

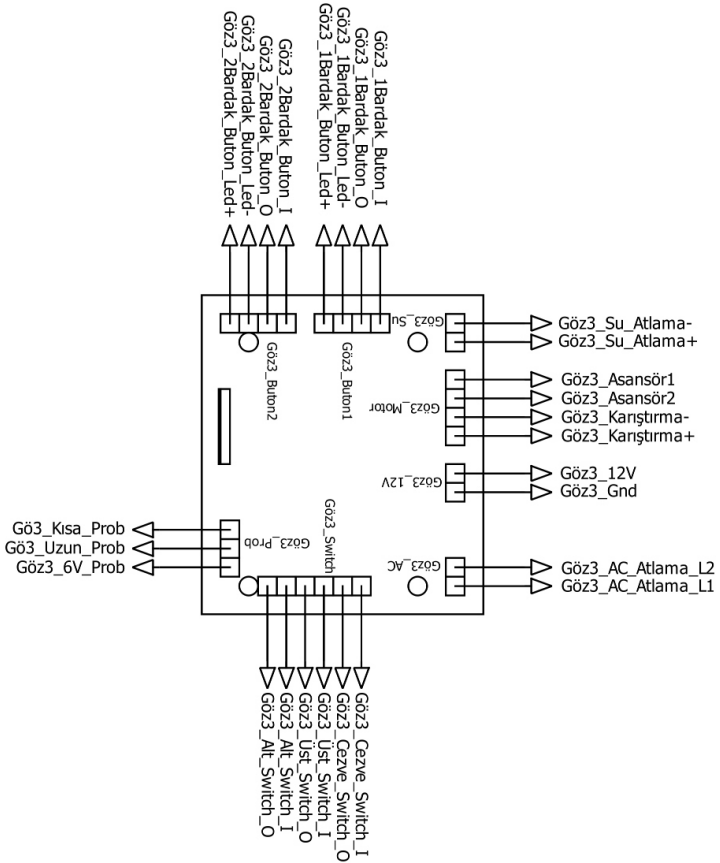


TKMMAT



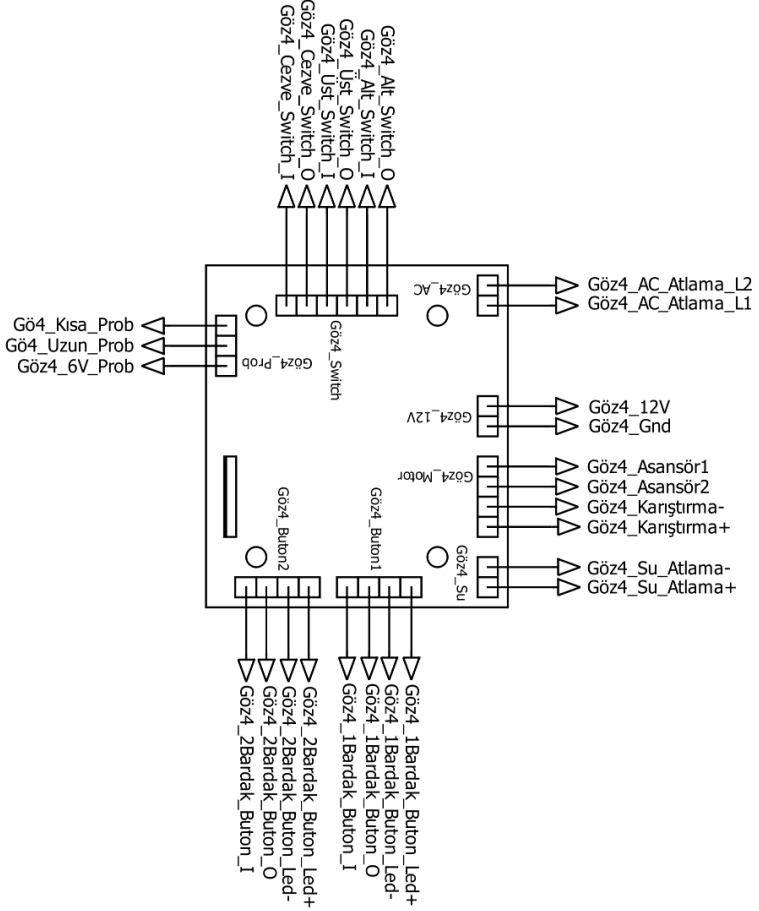
TKMMAT 2/3/4 MESH CARD CONNECTION DIAGRAM

TKMMAT



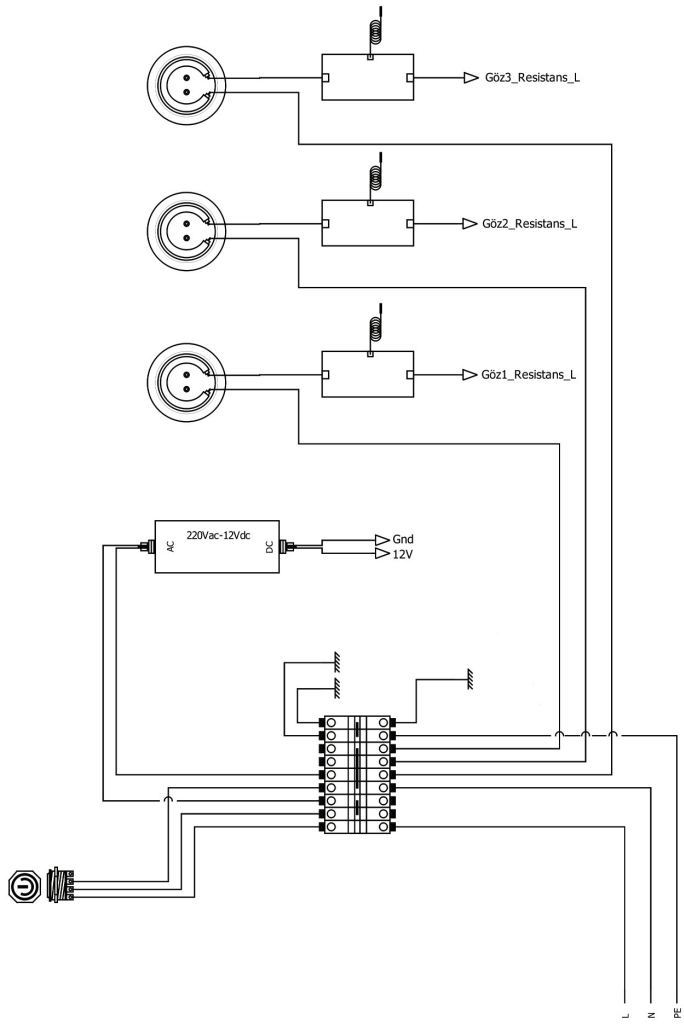
TKMMAT 3-EYE CARD CONNECTION DIAGRAM

TKMMAT



TKMMAT4-EYE CARD CONNECTION DIAGRAM

TKMMAT



TKMMAT RESISTANCE AND ON OFF CONNEC-TION DIAGRAM

