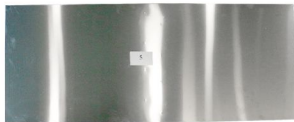
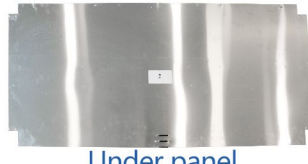


Cabinet Assembly Process

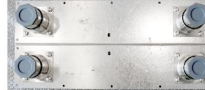
1 Unpack and remove all components

- 1 Top panel, 1 Back panel, 1 Left side panel, 1 Right side panel, 2 Foot plate, 4 Adjustable feet, 1 Middle shelf, 1 Working cabinet top, 1 Outside door, 1 Inside door, 4 Connecting rod, 16 nut, 16 Screw



2 Preparation

- i : Assemble the adjusting foot and angle plate
- ii : Install the screw and nut, and adjust the nut



Fix the adjustable feet and foot plate with screws



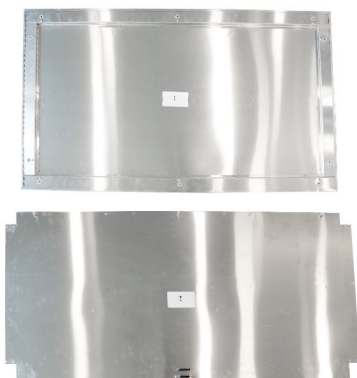
When the point of the nut is facing outward, the nut does not connect. When connecting the panel, screw the point of the nut in the opposite direction



Find the hole with the core-pulling nut in the panel and screw the connecting rod in

3 Connecting backplane and backplane

- Connect the back plate with the bottom plate, align the hole position, put in the connecting rod, and turn the nut to fix it



Cabinet Assembly Process

4 Assemble the side plates on both sides

Assemble the side plates on both sides, align the holes, put in the connecting rod, and turn the nut to fix the assembly



5 Install the base plate adjusting foot

Fix the base plate and install the base plate adjusting foot



6 Place the middle panel

Adjust the cabinet body and put the middle shelf into the cabinet body



7 Place the top panel

Place the top panel above the cabinet, place the side with hole at the door opening, and place it according to the position shown in the figure.



Cabinet Assembly Process

8 Fixing cabinet screws

The assembly is complete



9 Install the sliding door

Put the two doors into the runway (The pulley in the front is the outside door, and the pulley in the back is the inside door) .



Outside



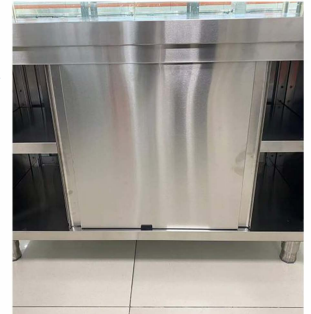
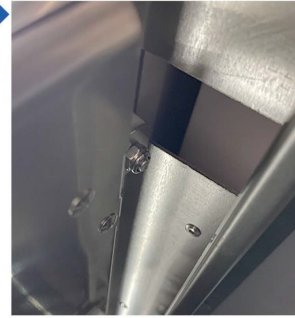
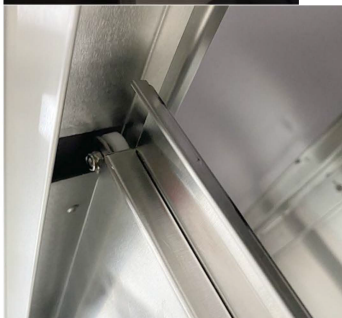
Inside



Note:
These two holes are used for the door pulley.



Note:
These two holes are used to install the door. Install the inside door first, and then the outside door. During installation, insert the pulley on the door into the corresponding hole, and then lower and fix it in the slide.



Assembly complete.