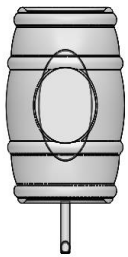




Nr.: 1 Abdeckung



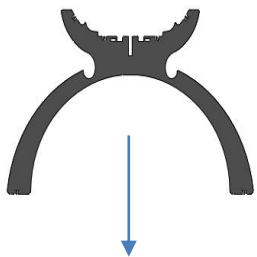
Nr.: 2 Weintank



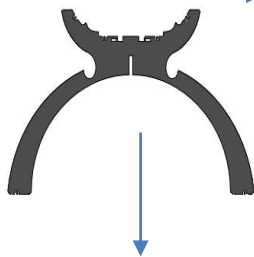
Nr.: 6 Gläser



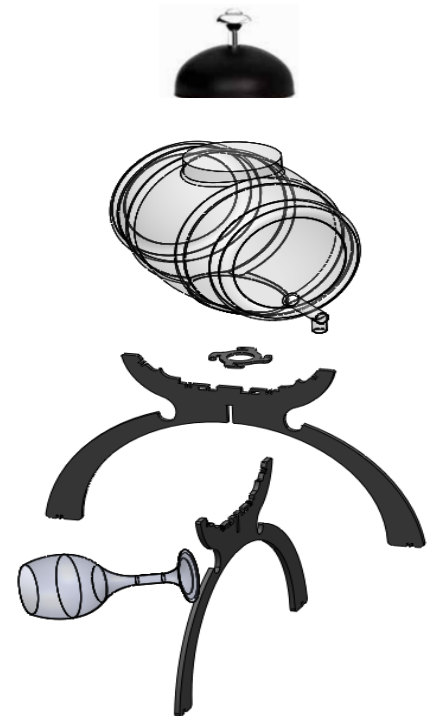
Nr.: 5 Sperrschlüssel



Nr.: 4 Bein



Nr.: 3 Bein



Werfen Sie die Beine (Nr. 3 + Nr. 4) ein und schließen Sie sie in den Schrank (Nr. 5). Schließen Sie den Deckel (Nr. 1) des Weintanks (Nr. 2). Stellen Sie den Weintank über die Beine. Hängen Sie die Gläser (Nr. 6) unter die Beine.

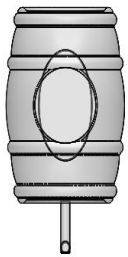
# ggmgastro

USER MANUAL

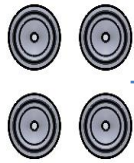
WINE DISPENSER



No: 1 Cover



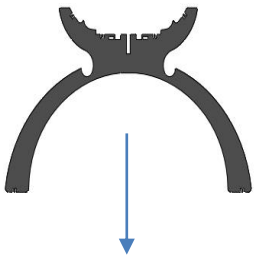
No: 2 Wine Tank



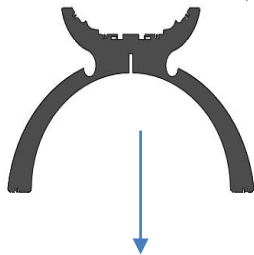
No: 6 Glasses



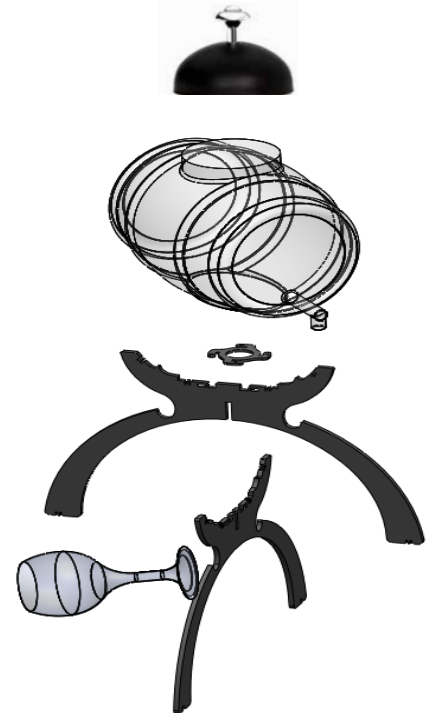
No: 5 Lock Key



No: 4 Leg



No: 3 Leg



Throw in the legs (No:3 + No:4 ) and lock them the locker (No:5).  
Close up cover (No:1) on the wine tank (No:2). Put wine tank over  
the legs. Hang the glasses (No:6) below the legs.