

BREAD SLICER

USER MANUAL

MODEL NO:
BSMS
BSMS-T



BSMS



BSMS-T

YEAR OF PRODUCTION :

SERIAL NUMBER :



CONTENTS

PAGE NR.	CONDITIONS
1	COVER
2	CONTENTS
3	PRESENTATION
4	TECHNICAL SPECIFICATIONS
5-6	GENERAL MEASUREMENTS- POWER PLAN
7	WARNING DIAGRAMS
8	SAFETY-RELATED DETAILS
9	TRANSPORTATION AND BASE REPLACEMENT
10-12	APPLIANCE USE, CLEANING AND MAINTENANCE
13	WARRANTY CONDITIONS
14-16	Exploded view

PRESENTATION

Dear user,

Thank you for choosing our appliance and for your trust in our company. Together with you, our appliances are used in commercial kitchens in 60 countries. Our appliance is manufactured in accordance with international standards.

We strongly recommend that you read the operating instructions carefully so that you get the right efficiency from your appliance and can use it for a longer period of time. Before you call our service department, please note the following warning.

- ⚠ Please read the manual carefully before installing and operating the device so that the users of the device do not have to read it. Operating the device without reading the manual will invalidate the warranty.

- ⚠ Ensure that the manual, which contains information on the installation, use and maintenance of the product you have purchased, is read carefully. Make sure that the installation of the appliance is carried out by qualified personnel in accordance with the legal regulations without our authorized service personnel coming to install the appliance.

- ⚠ If you do not understand something, do not hesitate to contact your nearest authorized service provider.

- ⚠ If the service element called for installation is put on hold, we remind you that the waiting fee for each hour will be charged to your group.

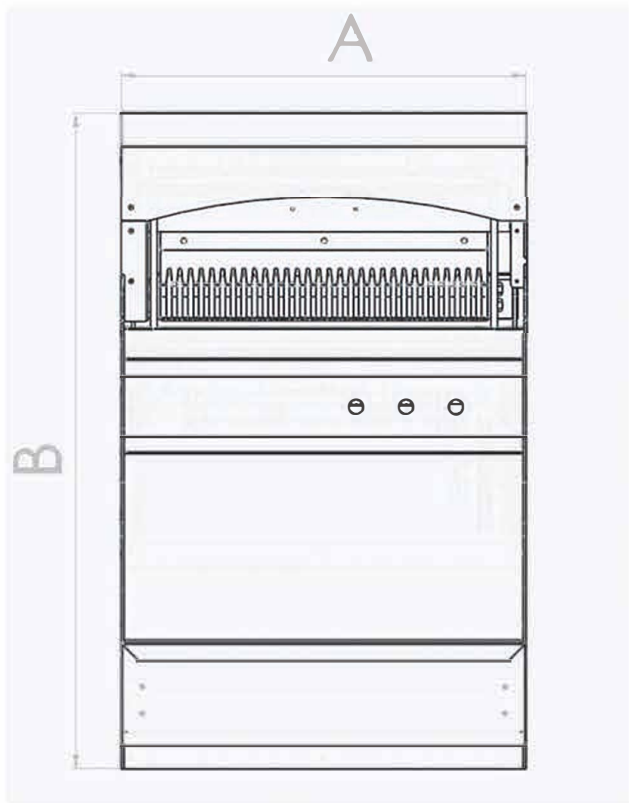
- ⚠ We wish you the best yield from our product...



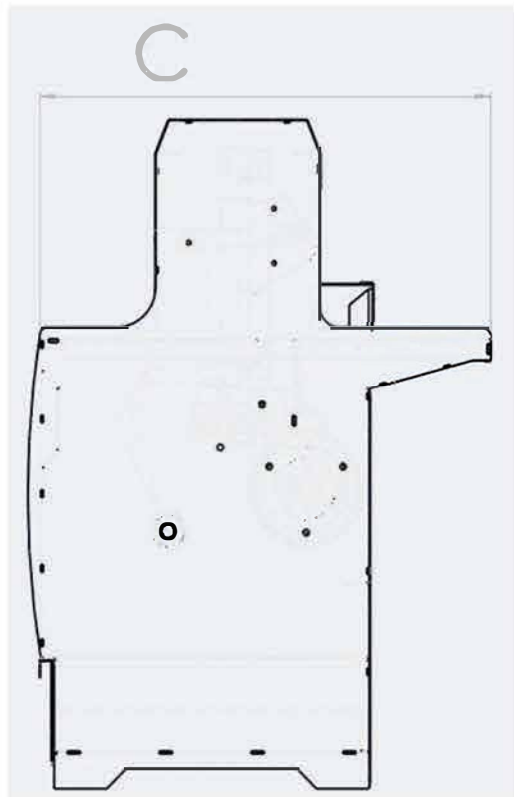
TECHNICAL SPECIFICATIONS

MODEL	BSMS	BSMS-T
EXTERIOR DIMENSIONS (x-y-z cm)	65 x 72 x 110	65x65x70
TOTAL ELECTRICAL POWER (KW)	0,37	0,37
ELEKTRISCHE VERSORGUNGS-SPANNUNG (V)	220	220
OPERATING FREQUENCY (Hz)	50/60	50/60
SLICING AREA	10-13-16-20	10-13-16
WIRELESS SUPPLY mm (H07 RNF)	3 x 1,5	3x1,5
CLASS OF PROTECTION	IP 20	IP 20
NET WEIGHT (KG)	120	110
NOMINAL FLOW (A)	2	2
CAPACITY	HOURS 500 BREAD	HOURS 500 BREAD

GENERAL MEASUREMENTS



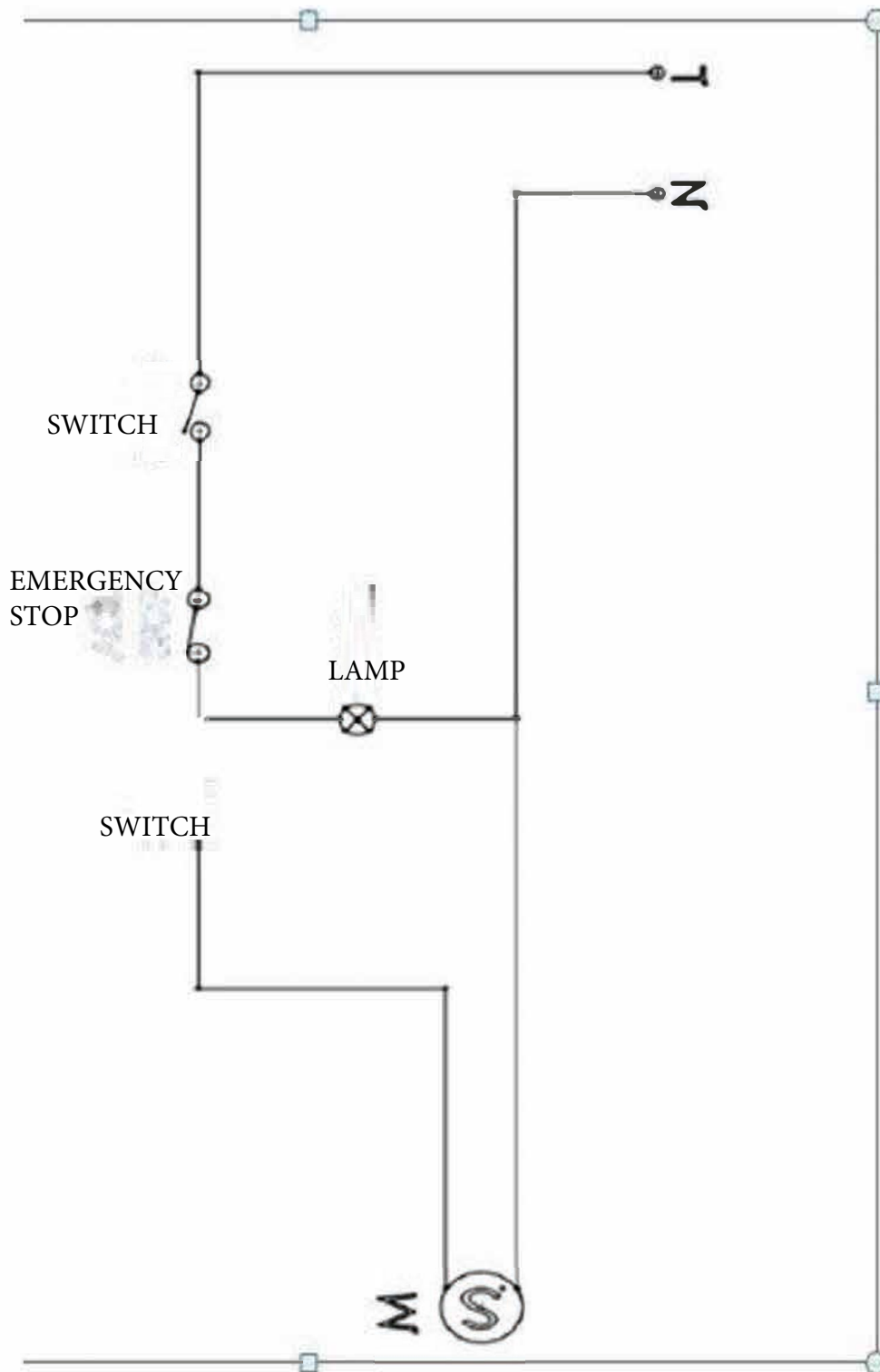
Front view



Side view

CODE	A	B	C
BSMS	65	110	72
BSMS-T	65	65	70

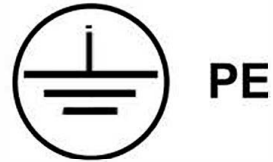
ELECTRICAL DIAGRAM



WARNINGS



PROTECTIVE EARTHING



NET WATER EARTHING



CURRENT STRENGTH



OVERHEATING TEMPERATURE

ELECTRICAL CONNECTION VALUES

220V -240V / 50/60 Hz

Voltage: 220 V - 240 V
Network connection: 220-240
V
Ground wire
Frequency: 50/60 Hz.

SAFETY DETAILS

- ☞ All types of solid liquid materials (clothing, alcohol and derivatives, petrochemical products, wood and plastic materials, curtains, etc.) that can be burnt in the working area of the appliance should never be stored in the vicinity.
- ☞ Do not clean with high-pressure water.
- ☞ You can use our appliances side by side with our other products on the same shelf.
- ☞ This appliance must be installed in accordance with the applicable regulations and may only be used in a well-ventilated place. Follow the instructions before installing and using the appliance.
- ☞ The appliance may only be operated by the manufacturer or its authorized customer service.
- ☞ Use fire extinguishers by closing the gas valves and electrical switches (if present) in the event of a fire flame. Never use water to extinguish the flame.



☞ Operating voltage of the appliance 220 V- 240 V / 50/60 Hz.
Do not use any other supply voltage.

☞ The electrical connection must be made by inserting a 16 mA residual current fuse in the supply fuse to protect against the risk of leakage current.



TRANSPORTATION AND BASE REPLACEMENT

Do not clean with high-pressure water.

The appliance is intended for industrial use only and may only be used by trained personnel.

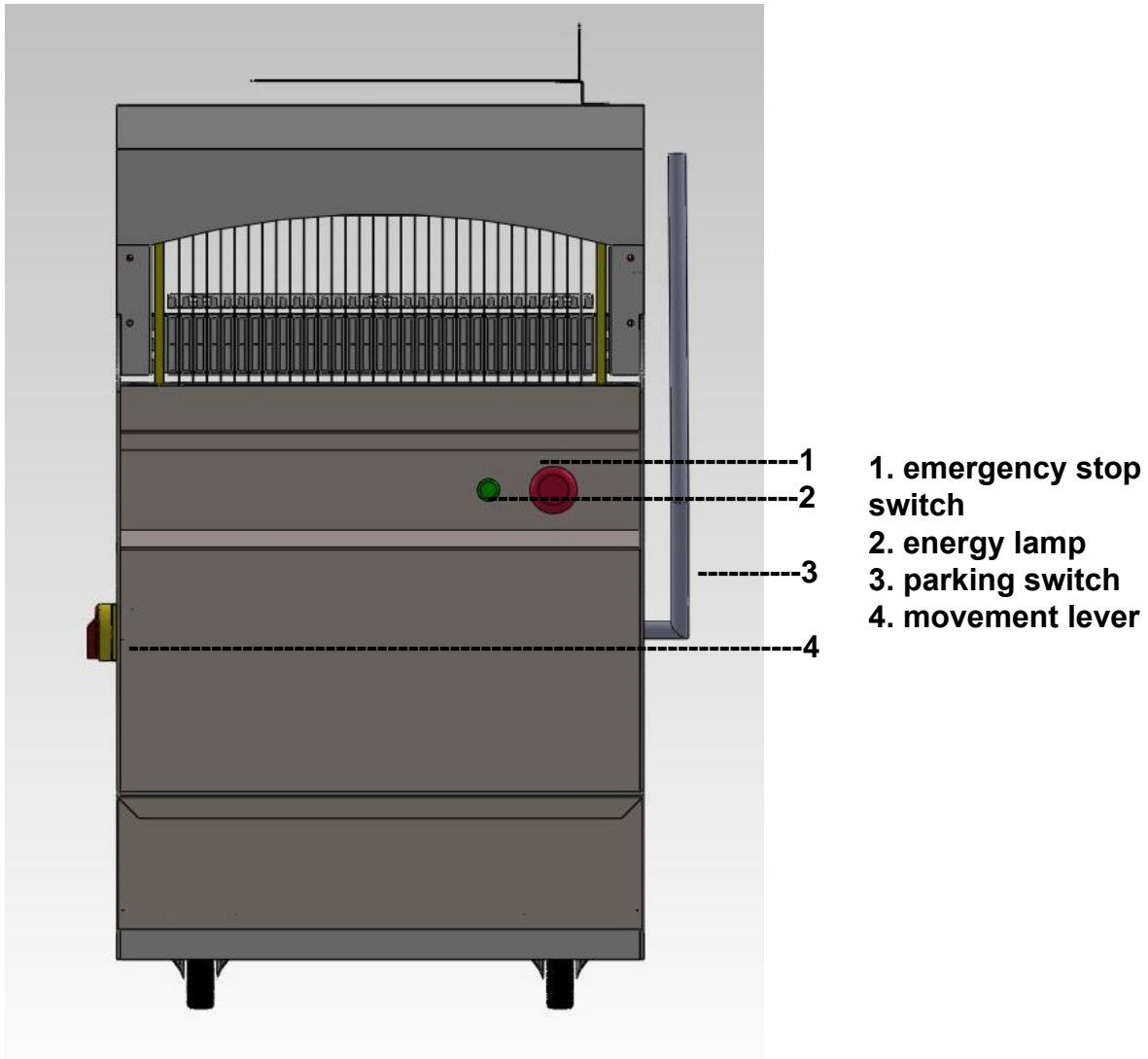
The feet of the under-table should be adjusted and the appliance should be operated at scale level.

The electrical connection of the appliance must be checked by a qualified electrician. It must be connected to the fuse at a height of 170 cm.

Electrical connection; The leakage current fuse must be attached to the supply fuse to protect against the risk of leakage current.

USING THE DEVICE CONTROL PANEL

**CAUTION : DO NOT OPERATE THE APPLIANCE WITHOUT HAVING OUR
AUTHORIZED SERVICE PERSONNEL INSTALL THE APPLIANCE**



USING THE DEVICE

Operating instructions

Pull the arm.

Place the bread.

Slowly release the arm.

The loaves are cut automatically.

Never put your hands in the mechanism where the blades move.

USING THE DEVICE

Slices of the same thickness on any size of bread
Easy and precise adjustment depending on the type and thickness of the bread
Stainless steel work stations
Good for your health
Automatic stop at the end of the cut
Easy to transport thanks to the wheels
Stylish and aesthetic appearance
5 mm reinforced body and stainless steel top cover
Lubrication and maintenance-free bearings
Quiet and vibration-free operation
Stainless and durable stainless steel blades
Fresh or monophasic (220-380 Volt 50 Hz)
The machine body is painted with durable electrostatic paint. Easy to operate and clean, small footprint.
2 year warranty on manufacturing and assembly defects. Optional stainless steel housing

CLEANING AND MAINTENANCE

REGULAR MAINTENANCE AND CLEANING

This is what the consumer should do:

Maintenance instructions

Disconnect the electrical connection before cleaning the machine. Clean the machine as required.

Do not clean or maintain with irrigation water.

Always observe the warning and caution signs on the machine.

Fault and reason

In the event of electrical or other faults, do not touch the machine and contact technical service immediately. Do not interfere with the machine until the technical service arrives.

SERVICE LIFE OF THE APPLICATION:

When used under recommended conditions, the device has a service life of 10 years.

USING THE DEVICE



ATTENTION: As described in the installation and usage instructions, make sure that it is installed and operated correctly. Call us if you notice any abnormalities.

IN THE EVENT OF DEVICE FAILURE, FAULT AUTHORIZATION ONLY FROM AUTHORIZED SERVICES

INTERVENTION BY UNAUTHORIZED PERSONNEL WILL INVALIDATE THE WARRANTY. UNAUTHORIZED PERSONNEL MUST NOT BE ALLOWED TO ACCESS THE DEVICE.

INDEPENDENT USE OF REPLACEMENT PARTS VOIDS THE WARRANTY. AUTHORIZED PERSONNEL ONLY.

1-) The warranty period begins on the date of delivery of the goods and is 2 years.

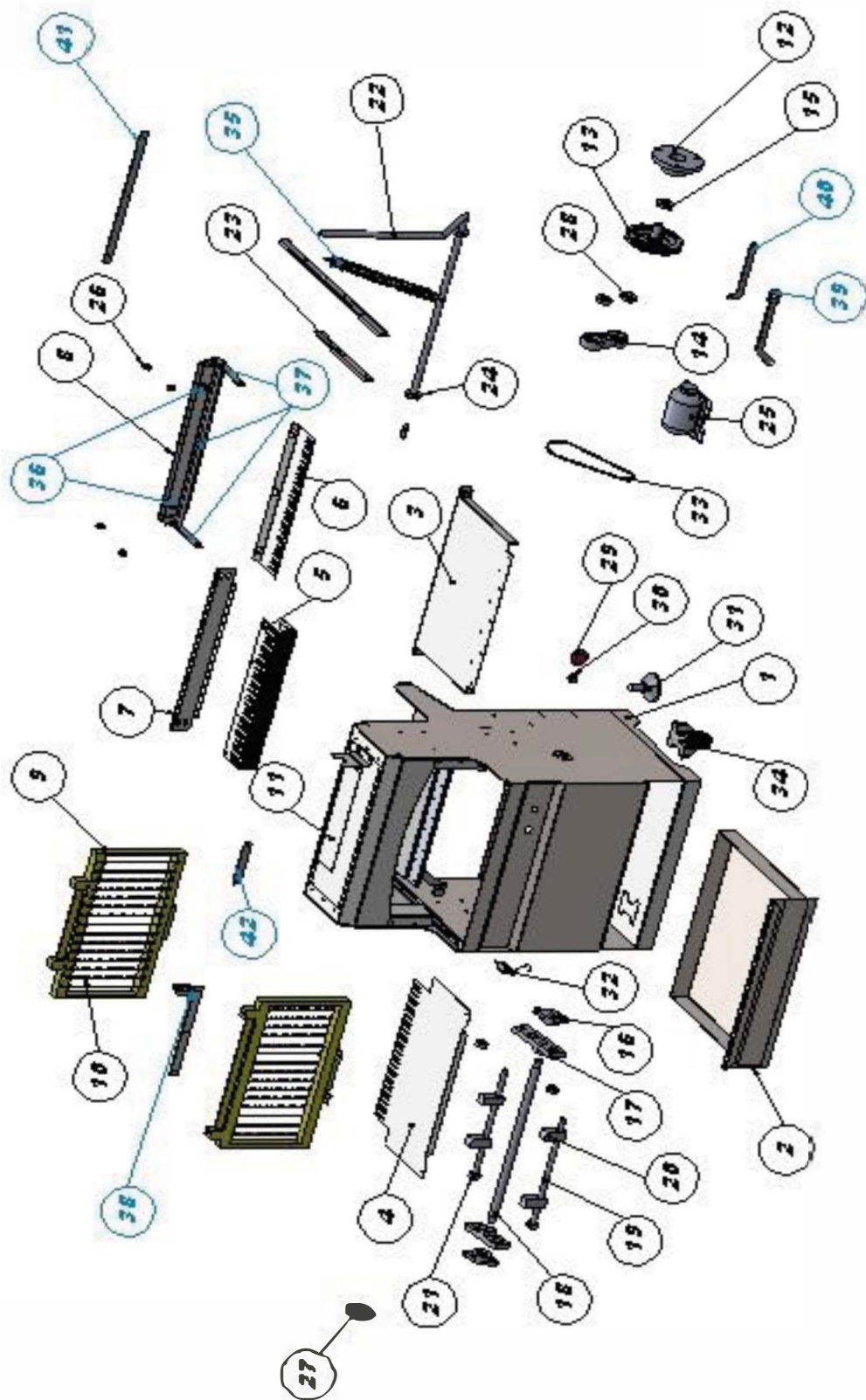
2-) All parts of the product are warranted by our company.

3-) In the event of a malfunction within the warranty period, the remaining repair time will be added. The maximum repair time of the product is 20 working days. The period starts from the date of notification of the defect of the product to the repair shop, or in its absence to the seller, distributor, agent or importer. The consumer can report the defect by e-mail, telephone, fax, etc. However, in the event of a disagreement, the burden of proof lies with the consumer. If the fault cannot be rectified within 10 days, the manufacturer or importer must ensure the use of another appliance until the machine has been repaired.

4-) In the event of malfunctions due to defects in material, workmanship or assembly during the warranty period, the repair will be carried out by the manufacturer or seller at no cost.

5-) Defects caused by unauthorized use of the goods are not covered by the warranty.

6-) In case of problems that may arise in connection with the warranty certificate, the Ministry of Industry and Trade may contact the consumer and the General Directorate for the Protection of Competition.



BSMS - Spare parts

CODE	NAME
1	CLASS
2	DRAWER
3	BACKSIDE
4	FRONTSIDE
5	DRIVER
6	PRINT CRADLE
7	DRIVER CLAMPS
8	PRESSURE COATING
9	BAND
10	CUTTING KNIFE
11	PACKAGING
12	MIRROR
13	ECCENTRIC SUSPENSION
14	GLASSES
15	6205 ZZ BEARING
16	UCFL204 BEARING
17	MIDDLE BED CASTING
18	MIDDLE BED SHAFT
19	CASSETTE CONNECTION SHAFT
20	MIDDLE BED BUILT
21	6202 ZZ BEARING
22	DRIVE SOLUTION
23	DRIVER RADIATOR
24	SOLAR BEARING DRIVE
25	MOTOR
26	PRINT PLATE
27	DISCONNECTOR
28	6204 ZZ BEARING
29	EMERGENCY STOP SWITCH
30	SIGNAL LAMP
31	ROTATING FOOT
32	SWITCH
33	PULLING BELT (13X725)
34	FIXED WHEEL
35	ARM TRAY
36	PRESSURE SPRING
37	SLINGS
38	DRIVE SOLUTION
39	8 mm ARM
40	4 mm ARM
41	CARBON-LAMPS
42	REAR WAVE SUPPORT LIGHTS

BSMS-T - Exploded view

