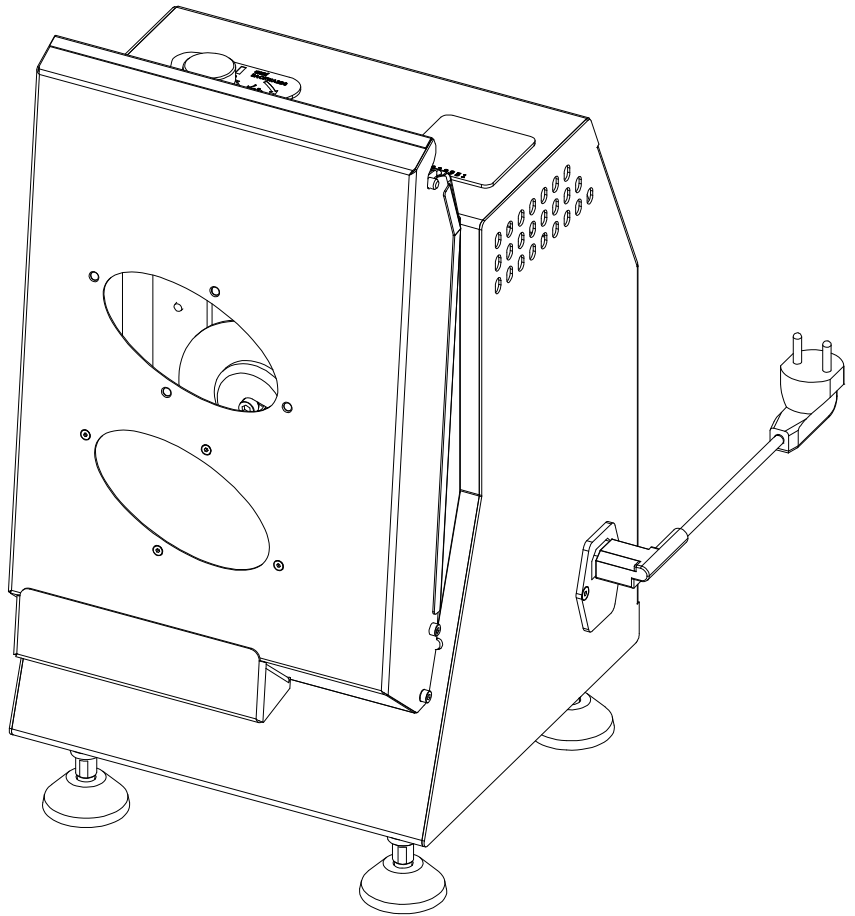


USER MANUAL

MSAT01



KNIFE SHARPENING MACHINE USER MANUAL



PREAMBLE

Dear Customers,

Thank you very much for your confidence in our product by purchasing our Knife Sharpening Series Machine. We want to justify your trust. You have purchased a powerful and reliable Knife Sharpening machine. If problems still arise: Our customer service is always there to help. Before operating the Knife Sharpening machine, please read the operating manual thoroughly and observe the instructions. The user manual provides detailed information on operation and provides invaluable information on control, maintenance and inspections. As you know, your warranty applications will not be accepted for damages resulting from incorrect or improper use.

Note: Please enter the type, serial number and year of production of the Knife Sharpening machine here. You can read this information on the type plate or on the chassis. Always provide this information when ordering spare parts, special retrofit devices or if you have problems.

Item Type

Serial No

Production Year / Purchased Date

Technical developments

We strive to develop our products rapidly and technologically. We reserve the right to apply all improvements and changes we require to our products without prior notice, without transferring them to the machines we have previously sold. If you have different questions, we will gladly answer them.

Regards.

Producer,

CONTENTS

1. DEFINITIONS

- 1.1. Certifications
- 1.2. Safety rules
- 1.3. Meaning of Warning Labels and Shapes
- 1.4. Machine Tag
- 1.5. User Reminders
- 1.6. abbreviations

2. CARRYING

- 2.1. Installation, Download, Placement
- 2.2. Considerations When Receiving
- 2.3. Safety Alerts

3. GRINDING MACHINE FEATURES AND BASIC INFORMATION

- 3.1. Sharpening Machine Description Features
- 3.2. Technical Data
- 3.3. Part Description and Functions
- 3.4. Compatible Knife Models
- 3.5. Operation and Use
- 3.6. Care and Cleaning

4. USER INFORMATION AND TROUBLESHOOTING

- 4.1. User Errors
- 4.2. Electrical Information
- 4.3. Warranty conditions

1. DEFINITIONS

1.2. Safety Rules



**TO ALL SAFETY WARNINGS IN THE MANUAL
FOLLOW!**



DESCRIPTION OF SAFETY INFORMATION - The safety symbols in this manual are used to identify potential hazards.- When any safety symbol appears in this manual, it is understood that there is a risk of injury or a risk to human health and that the following hazards should be read carefully to avoid potential hazards. During the operation of the machine, maximum care must be taken to ensure that persons other than the operator are not in the working area and do not interfere with the machine.

COMPLY WITH ALL SAFETY WARNINGS IN THIS MANUAL!

This Product must be installed in accordance with the applicable national and local laws of the country and / or region in which it will be installed.

- All electrical mains connections of this device must be made in accordance with the wiring diagram supplied with the device. Inside the packaging, the electrical grid connection diagram is attached to the User Manual.
- This appliance is designed for professional use only and should only be operated by qualified personnel. Installation, maintenance and repairs should only be carried out by producer Authorized Technical Service Personnel (ATSP) or other qualified personnel. Installation, maintenance or repair by unqualified persons may void the manufacturer's warranty.
- Read the operating instructions, the labels and safety instructions on the machine carefully.
- Make sure the warning labels on the machine are in good condition. Have missing or defective labels replaced. - Learn how to operate the machine and how to control it correctly.
- Use your machine in suitable working environments. - Improper modifications to your machine will have a negative effect on the safe operation and service life of your machine.

ELECTRIC SHOCKING IS DANGEROUS

If the leakage current circuit breaker and residual current protection device connected to the machine are installed in accordance with the instructions, the electrical safety of this machine is ensured. It is of utmost importance that the basic safety requirements are tested and, if in doubt, checked by a specialist in the wiring. the manufacturer cannot be held liable for any damage caused by insufficient or broken grounding lines (eg electric shock).

- Check all cables for possible damage and cuts at regular intervals. If a damaged or uninsulated cable is detected, repair it immediately or have it replaced.
- Keep the machine switched off when not in use.
- Unplug all power connections and plugs or turn off the machine before repairing the machine or for mechanical maintenance, daily cleaning with water.

1. DEFINITIONS

1.2. Safety Rules

MOVING PARTS CAN CAUSE INJURY -

Avoid moving parts and parts on the machine. Keep away from cutting parts on the machine. Avoid interference by uninformed persons. Ensure that the knife hub, knife holder, screws, cover and installation are correctly connected on the machine and are correctly installed.

MAINTENANCE OF MACHINERY, ACCESSORIES AND EQUIPMENTS BY UNAUTHORIZED PERSONS CAN CAUSE INJURIES

Electrically powered devices must not be repaired or serviced by unauthorized persons. Failure to do so may result in serious damage to the device and injury.

SAFETY INSTRUCTIONS FOR MAINTENANCE AND REPAIR

- Disconnect the machine from the mains before carrying out any installation, maintenance or repair work. Tools consuming electricity are energized until the main switch of the customer is switched off.
- Only original spare parts supplied by the manufacturer must be used for maintenance and repair. If non-genuine spare parts are used, the warranty period expires.

GENERAL SAFETY WARNINGS

Carefully read the safety and operating instructions in this manual. The manufacturer's liability and warranty cannot be claimed if the safety instructions and operating instructions are not observed. Only work with the machine when you have read and understood the instruction manual. Only operate the machine as described in the instruction manual.

1. DEFINITIONS

1.3. Meaning of Warning Labels and Shapes



Warning of possible failures or damage to the product as a result of non-observance of the described safety precautions.



Warning of possible serious or even fatal injury to persons due to non-observance of electrical safety precautions.

Attention

Electrical Hazard



Warning of cut-out injuries to the limbs and skin with a piercing, cutting blade as a result of non-observance of the warning labels and cautions described.



Warning of injury in the event of non-observance of the warning labels and cautions described by pinching limbs such as hands, head and arms to the moving parts.

Cutting Tools

Moving Parts



All parts of your machine are made of recyclable parts and materials.



Waste oil and metal raw materials produced during cleaning and maintenance harm the environment and nature.

Warning Information

Warning Information



Warning against skin irritation and surface defects on metal surfaces as a result of non-observance of the warning labels and cautions described.





CE marking; It is not a quality symbol, but a sign that the product on which it is attached meets all the requirements of the relevant regulation and is intended to ensure the free movement of goods between the member states of the European Union.

Harmful or Irritant

CE Marking

1.DEFINITIONS
1.4. Machine Tag

Producer			
Doner Knife Sharpening Machine			
Product Dimension (cm):	36Dx39Wx50H	Model:	MSAT01
Net Weight:	18 Kg	Serial No:	190518 012
 1312-19			

60,00 mm

100,00 mm

Product Dimensions:

Model:

Net Weight:

Serial Number:

1.DEFINITIONS

1.5. User Reminders

1.5.1. Instructions for use This user manual is an integral part of the ABB Series Blade Sharpening Machine. The operating manual contains important information on safe, proper and economical use and maintenance of the Sharpening Machine. Observing the instruction manual helps you avoid hazards, reduce repair costs and repair times, and increase the reliability and life of the machine. All of these operating instructions and the relevant supplier documentation must be kept ready for use in the vicinity of the Knife Sharpener. User's manual For the operator of the Knife Sharpener and the operating and maintenance personnel. Every person responsible for performing the following tasks on the machine must read, understand and follow these operating instructions.The following must be observed when:

- Operation,
- Maintenance and cleaning,
- Troubleshooting.
- Safety section,
- Warning notes in the text of each section. The operating instructions do not relinquish your own responsibility as the operator and user personnel of the Knife Sharpener.

1.5.2. Structure of the Operating Manual

The operating manual is divided into 6 main topics:

- User reminders,
- Safety instructions,
- Machine data,
- Instructions for the use of the Knife Sharpener,
- Routing chart for detection and elimination of faults,
- Instructions for use instructions.

1.6. Abbreviations Abbreviations made in this manual, known abbreviations within the framework of German and world standards are detailed in the table below and these abbreviations are used within the scope of the manual.

Abbreviation	Description	Abbreviation	Description
CE	European Standard	BBM	Knife Sharpening Machine
Bkz.	See	KK	User Manual
E	Electric Model	AISI	AISI Stainless
Mt.	Meter Long Unit	Cm.	Centimeters Length Unit
Height	Height Length	Weight	Genişlik Ölçüsü
Length	Length Measure	Kg.	Kilowatt Energy Unit
Gr.	Gram Weight Measure	kW.	Kilovat Enerji Birimi
W	Watt Energy Unit	V	Volt Energy Unit
Min.	Minimum Quantity	Max.	Maximum Amount
Ø	Diameter (Circle) Measurement	UPS	Uninterruptible Power Supply
ATS	Technical Services	ATSP	Technical Services Personnel
ASY	Atalay Purchasing Officer	ASFY	Purchasing Factory Officer

2.CARRYING

2.1 Installation, Download, Installation,

1. Determine the weight of the Knife Sharpener. When doing so, check the information on the factory nameplate. If necessary, take into account the weight of the additionally installed special devices.
2. Carefully lift the machine with a suitable lifting tool.
3. Carefully unpack the machine, starting from the top cover, so as not to damage the machine.
4. Unpack the packaging for reuse.
5. After this stage, ATSP will be put into operation for installation and installation works. Do not carry out any installation or assembly work other than ATSP information and control.



2.2 Considerations When Receiving the Product

1. The standard accessories that should be on the BBM in the package should be checked and received from the written list included in the package. Any deficiency or incorrect part accessory information must be reported to the manufacturer's representative or Sales Representative.
2. The Spare Parts specified in the written list together with BBM in the packaging shall be checked and received. Any deficiency or incorrect part accessory information must be reported to the manufacturer's representative or Sales Representative.
3. In the event that any damage, crush, puncture and impact due to carrying any accessories and spare parts found in the package is detected, they should be recorded immediately by taking pictures or videos and should be recorded with the transportation personnel or producer's customer representative for discussion.



2.3 Safety instructions

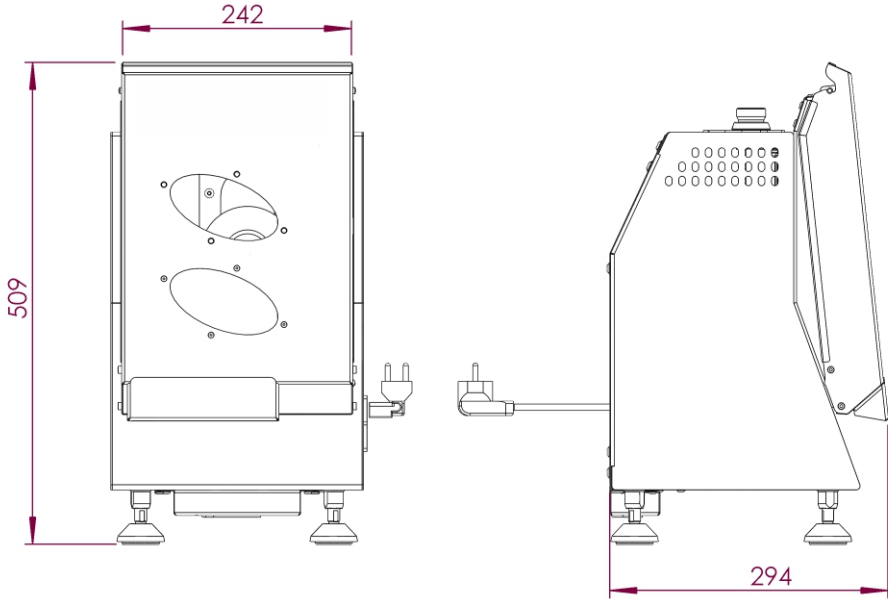
- The motor will stop after a certain time after the device is turned off. A period of time must elapse for the motor to decelerate. Do not open the cover during this time.
- Before using the device, check the 'country of destination and' electrical frequencies üzerinde on the device and the packaging. Do not use in countries or frequencies other than the countries and frequencies indicated on the label.
- Position the device on a level surface using scales. Make sure that the foot nuts are tightened. Never use the appliance without its feet.
- Do not place any objects under the appliance that will prevent air from entering the device.

The manufacturer guarantees that the device can be used safely only if these parts are used. The grinding machine is designed to sharpen circular blades and flat blades with döner robot, tandoor and similar features. This appliance is intended for professional use and should only be used by trained personnel. The sharpening machine is designed to make your blades more accurate and ideal. In this way, the life of your blades will be longer. It is also a very useful tool for cutting the slaughtered meat more smoothly and without spreading. You should not attempt to tie or sharpen knives other than the specifications and form blades specified in your instruction manual.

3. GRINDING MACHINE FEATURES AND BASIC INFORMATION

3.1. Sharpening Machine Description Features

Bileme Makinesi döner robotu, tandır ve benzeri özellikleri olan dairesel bıçakları ve düz bıçakları bilemek için üretilmiştir. Bu cihaz profesyonel kullanım amaçlı olup yalnızca eğitilmiş kişiler tarafından kullanılmalıdır. Bileme makinesi bıçaklarınızın daha doğru ve ideal formda bilenmesini sağlamak amacıyla üretilmiştir. Bu şekilde hem bıçaklarınızın ömürleri daha uzun olacaktır. Hem de kesilen etin daha düzgün ve dağılmadan kesilebilmesi için oldukça faydalı bir araçtır. Kullanma kılavuzunuzda belirtilen özellikler ve formdaki bıçaklar dışında bıçak bağlamaya ve bilemeye çalışmanız gerekir.

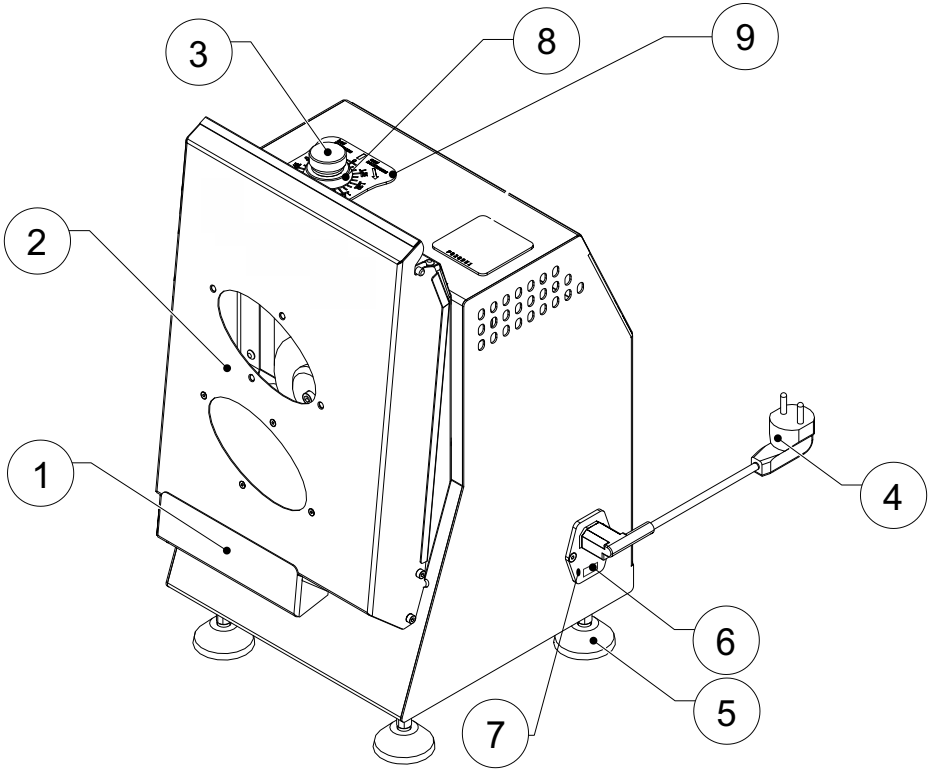


3.2. Technical Data

DEVICE NAME	Knife Sharpening Machine
DIMENSIONS	509 x 242 x 294 mm
NET WEIGHT	18,7 kg
SUPPLY VOLTAGE	230 V AC N PE
OPERATING FREQUENCY	50 / 60 Hz

3. GRINDING MACHINE FEATURES AND BASIC INFORMATION

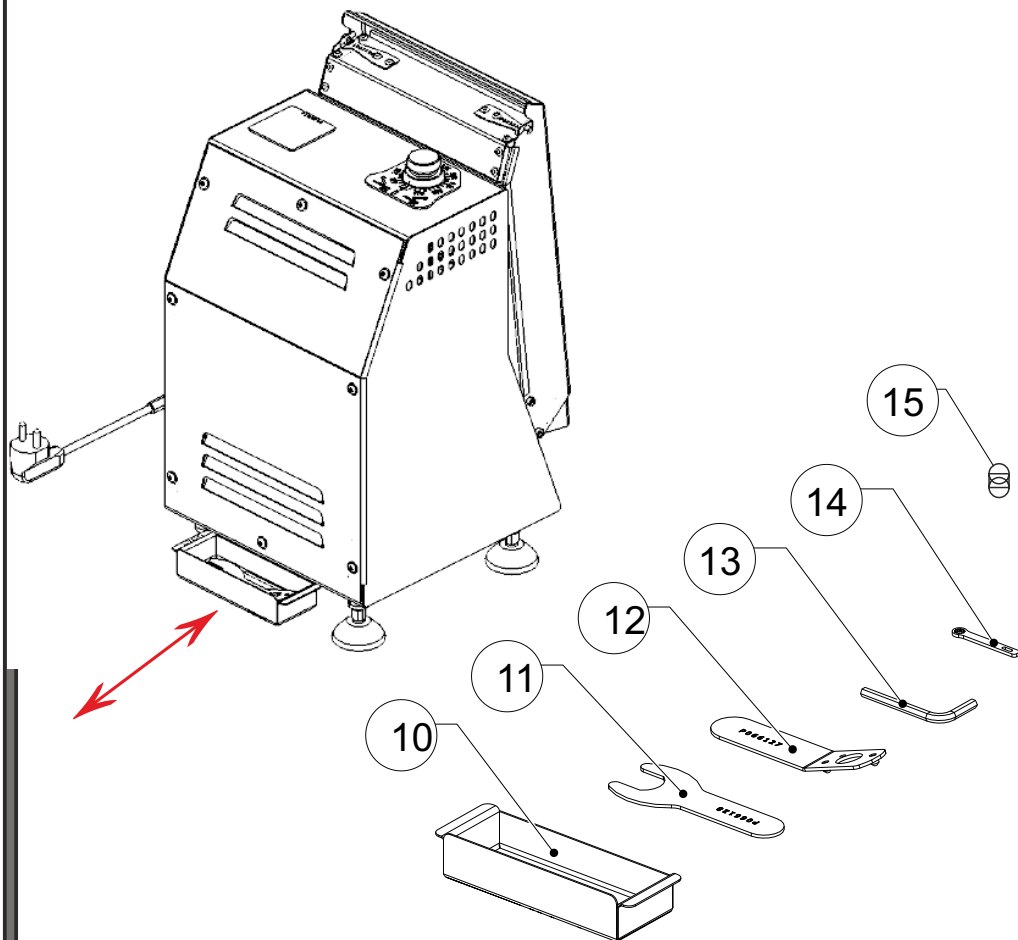
3.3. Part Description and Functions



1. Grinding stone is dust holding chamber. Sheet metal part is pulled out and dust is removed.
2. Front housing cover. The machine will not operate when this cover is open.
3. Blade up and down steering lever. By turning to the right, the blade is brought down to the sharpening stone in the downward direction. It is turned to the left and removed from the sharpening stone.
4. Grinding machine is power supply cable. It provides electrical energy to the system.
5. Sharpening machine feet. Feet are adjusted to the device with the adjustment nut located on the upper part of the feet. 4 feet are the same feature.
6. Glass current protection fuse.
7. On-Off Button.
8. Angle adjustment needle. It is used to determine the sharpening angle of the blade.
9. Angle adjustment indicator. Indicates the degree of sharpening angle of the blade.

3. GRINDING MACHINE FEATURES AND BASIC INFORMATION

3.3. Part Description and Functions



10. Spare material sheet container. It can be found on the back of the Sharpening Machine as shown on page-15. 6-8-9-10-11 parts come ready in this chamber.

11. Smartstone removal wrench.

12. Blade holder. It is used for holding the knife with this apparatus and placing it in the grinding slot. You should use this apparatus to prevent damage to your hand.

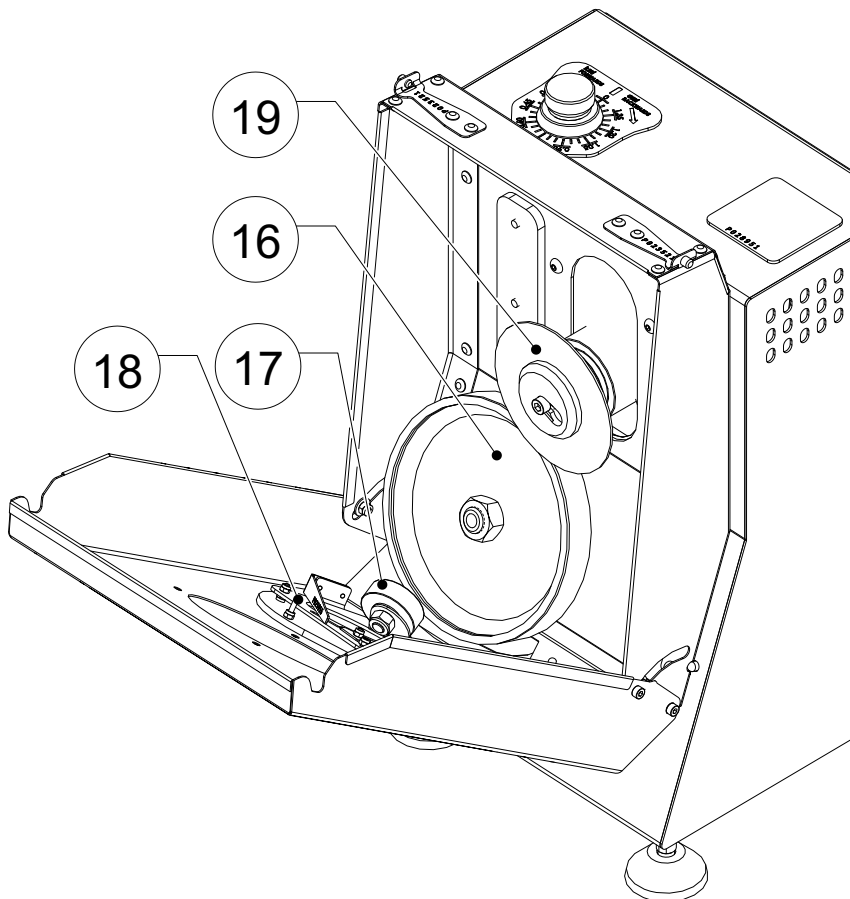
13. Alien key of 5. It is necessary to tighten the blade hub.

14. Switch of bearing spacer to prevent burr.

15. Spare Glass Insurance.

3. SHARPENING MACHINE FEATURES AND BASIC INFORMATION

3.3. Part Description and Functions



- 16. Sharpening Stone.
- 17. Anti-burr bearing.
- 18. Anti-burr bearing spacer
- 19. Circular Knife

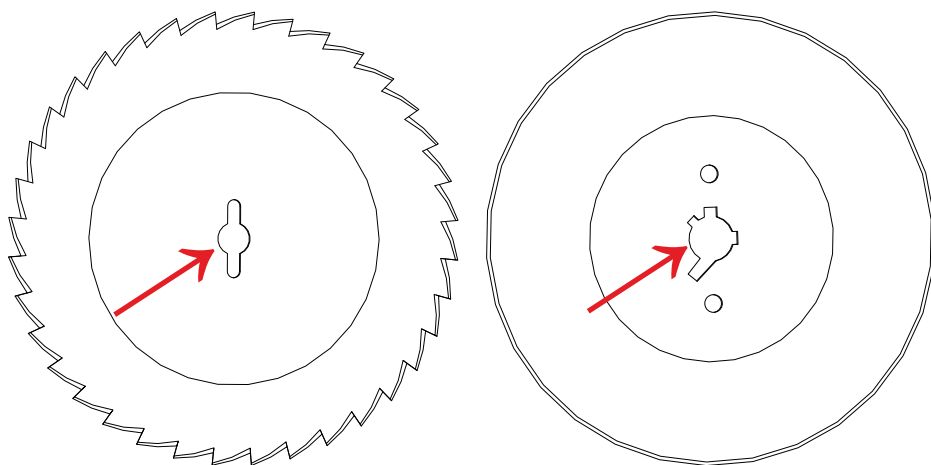


WARNING

When the blade is installed, it is absolutely not necessary to touch the sharpening stone. Otherwise, the blade surface will be damaged.

3. SHARPENING MACHINE FEATURES AND BASIC INFORMATION

3.4. Compatible Knife Models



Mounting blades in the forms that appear on the side of your sharpening machine.

The dimensions of the fixing slot for the blades to be mounted must be between \varnothing 10-16 mm and in the center of the blade.

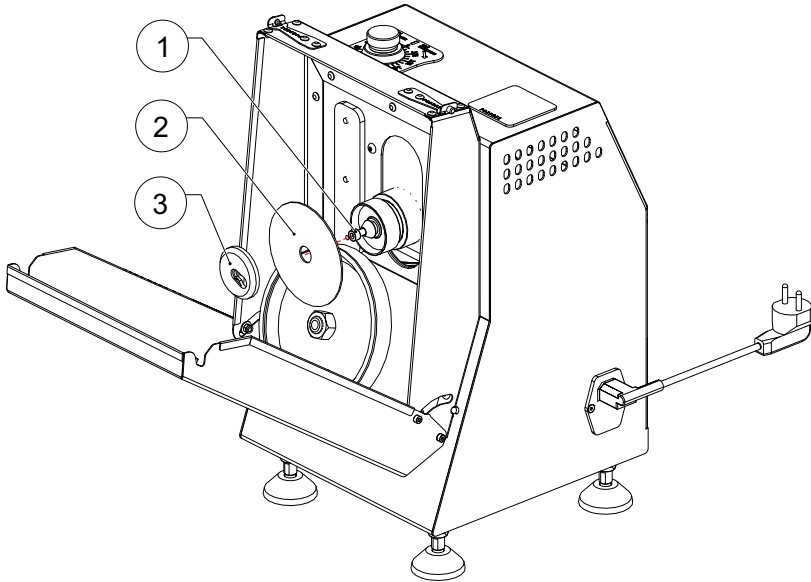


WARNING!!!

You can sharpen the blades between minimum \varnothing 80 mm and maximum \varnothing 200 mm in your sharpening machine. The manufacturer cannot be held responsible for any errors and damages that may occur when you try to sharpen a diameter greater than \varnothing 200 mm!

3. GRINDING MACHINE FEATURES AND BASIC INFORMATION

3.5. Operation and Use



Loosen screw # 1 for blade mounting. The blade fixing cover is removed. Then the knife is placed in the slot with the sharp surface on the inside (direction facing into the machine). The assembly is completed by tightening the fixing screw. After installation, it is ensured that the knife and sharpening stone can be freely rotated by hand. If there is a situation in contact with each other, the installation should be reviewed. The front cover of the grinding machine is closed. The knife is turned up and down by turning the knife in the opposite direction and slowly moving the knife in the down direction. When this noise is heard, the knob is slowly turned clockwise to return the blade to the sound start position. The angle pointer is set to the 0 (zero) position on the angle display. The direction lever is turned counterclockwise again to allow the angle pointer to reach 0.15. For blades that do not deform on the surface, sharpening is sufficient for an average of 40 seconds. Sharpening should be continued until the blades which have deformation on the surface (broken, cracked, crushed as a result of impact, broken form) are corrected. During grinding, check that the deburring roller rotates. If it does not rotate, the height adjustment plate makes sure that the blade touches the rear end point



WARNING!!!

**Sharpening will not start with the front cover of the Grinding Machine open.
The safety switch on the cover must not be canceled by the user.**

3. GRINDING MACHINE FEATURES AND BASIC INFORMATION

3.5. Operation and Use

After the sharpening process is completed, the guide lever is turned clockwise and the blade is moved upwards. The blade is stopped rubbing against the sharpening stone. The on / off switch is set to 0 (zero). Wait for a while until the engines stop completely. The front cover is then opened and the blade is removed. Disconnect the power supply from the mains during installation, maintenance, repair and cleaning of your machine. Check for voltage.



UYARI!!!
Bileme işlemleri tamamlandıktan sonra bıçak aşırı keskin olacağı için azami şekilde dikkatli olunmalıdır! Kullanım öncesinde yıkanarak kullanılması gerekir.

3.6. Care and Cleaning

Switch off all electrical components before cleaning the device. All other contaminated areas of the device must be cleaned by wiping with a damp, warm cloth. Always unplug the appliance before cleaning it. Do not use any cleaning materials and tools that may cause abrasion and scratches on the surface of the device. Never clean the appliance with pressurized water or pressurized steam. When cleaning the device, make sure that no water gets into the ventilation inlet..



WARNING!!!
Sharpening Do not wash your machine with water except the specified parts and accessories !!! Failure to do so will damage the electronics.



Installation, maintenance, repair and cleaning of your machine work, disconnect the power supply from the mains. Check for voltage.



WARNING!!!
Protect your hand from knife sharpener cutting parts Use gloves for blade cleaning! Failure to do so may result in injury and damage!



4. USER INFORMATION AND TROUBLESHOOTING

4.1. User Errors

- Before sharpening the knife must be washed with water and oil, meat pieces must be cleaned completely. Internal use of your sharpening machine will be damaged by continuous use. Otherwise the service life of the grinding machine and moving parts will be reduced.
- The main body of the device should not be washed with water. It may cause electrical leakage or device malfunction.
- The penetration of foreign objects into the device may cause the device to malfunction.
- Cutting, breaking or damaging the power cord may cause the device to malfunction or malfunction.
- Moving the device in working condition may cause deterioration or decrease in life.
- The device which is exposed to impacts during transportation may deteriorate or shorten its life.
- Placing a heavy load on the device may cause the device to malfunction or shorten its life.
- Connecting the device to a non-earthed line may result in electric shock, unstable operation or breakdown of the device.
- The device will not increase the temperature of the feet will not increase the air inlet and the device will turn itself off.



WARNING!!!

Sharpening Spare parts for repairing your machine should not be replaced with different parts without the manufacturer's knowledge and approval. Otherwise, the manufacturer cannot be held responsible for any damages!

4. USER INFORMATION AND TROUBLESHOOTING

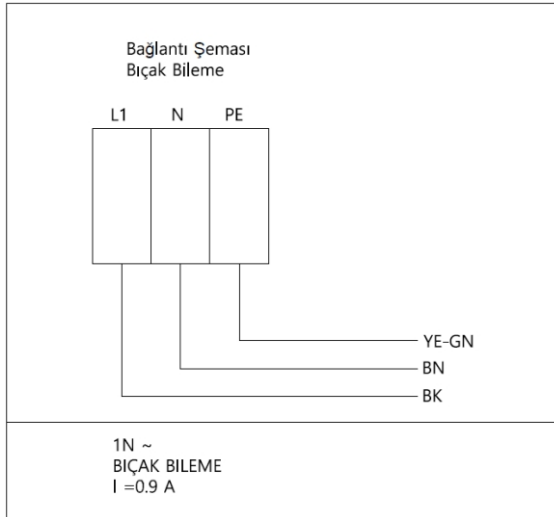
4.2. Electrical Information



Dangerous components!
- The machine and any additional devices must be connected by the competent authority of the electrical installation authorized by an authorized power supply, in accordance with local regulations and regulations.



- If the residual current circuit breaker and residual current protection device installed in ; accordance with the instructions are connected to the machine, the electrical safe0ty of this machine is ensured. It is extremely important that the home wiring be checked by a specialist if basic safety requirements are tested and suspected. The manufacturer cannot be held responsible for any damage caused by insufficient or broken grounding line.



- The device may only be operated with the voltages and frequencies specified on the nameplate.
- Machines supplied without a mains plug must be connected permanently.
- The electrical connection must be protected by a separate independent safety circuit with fuses or circuit breakers. Fuses are determined according to the total connection value of the machine. The total connection value of the machine is indicated on the plate of the machine.
- Switch off the power using the switch on the fuse box before starting work on the machine. Make the electrical connections in accordance with the regulations in force.
- For your safety and trouble-free operation of the machine, the power supply cables must be connected to a properly earthed socket.



Warning!!!
The power supply line of the Knife Sharpening Machine must be used with an electrical installation grounded in accordance with the standards!



4. USER INFORMATION AND TROUBLESHOOTING

4.3. Warranty conditions