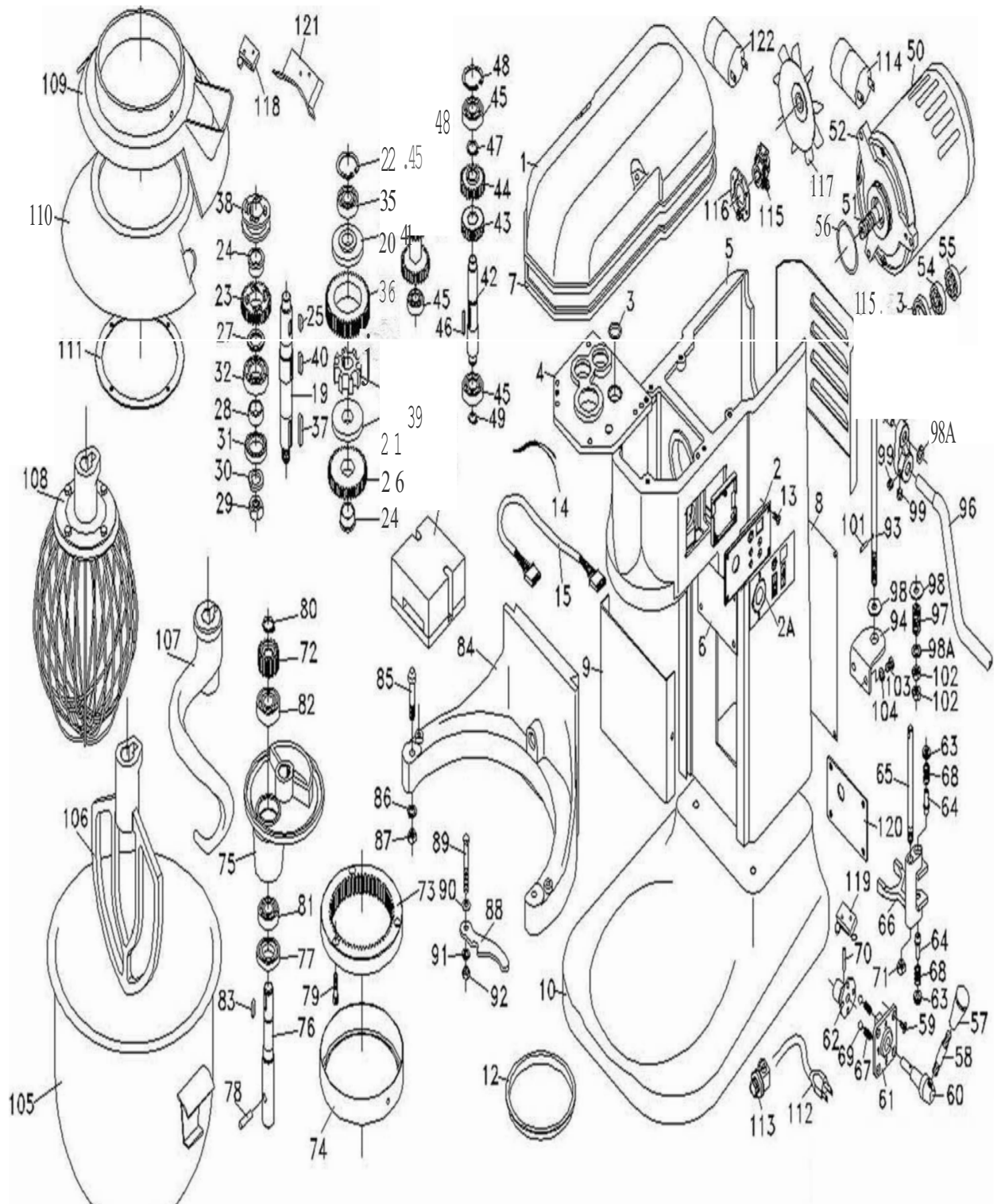


RTK12



RTK12

Part No. of Diagram		Description	Quantity (PCS)	
1	Z-GM12-001	TOP COVER	1	
2	Z-GM12-002	CONTROL PANEL WITH BOX	1	
2A	Z-GM12-002A	STICKER OF CONTROL PANEL	1	
3	Z-GM12-003	OIL BAFFLE	1	
4	Z-GM12-004	GEAR HOUSING COVER	1	
5	Z-GM12-005	MIXER HEAD AND COLUMN	1	
6	Z-GM12-006	COVER PLATE	1	
7	Z-GM12-007	U-TYPE SEAL 6MM	1	
8	Z-GM12-008	REAR PLATE OF COLUMN	1	
9	Z-GM12-009	FRONT COVER	1	
10	Z-GM12-010	BASE	1	
11	Z-GM12-011	REAR COVER	1	
12	Z-GM12-012	PLASTIC PLUG	1	
13	Z-GM12-013	MACH SCREW 5/32x3/8	4	
14	Z-GM12-014	INTERNAL WIRES	1	
15	Z-GM12-015	INTERNAL WIRES(PANEL TO	1	
16	Z-GM12-016	WIRES OF BOWL SWITCH	1	
17	Z-GM12-017	WIRES OF SAFETY GUARD SWITCH	1	
18	Z-GM12-018	IC BOARD(110V)W/BOX	1	
19	Z-GM12-019	PLANETARY SHAFT	1	
20	Z-GM12-020	DETAIN-FIXED COVER	1	
21	Z-GM12-021	WASHER	1	
22	Z-GM12-022	C-TYPE SNAP RING R35	1	
23	Z-GM12-023	GEAR(32T)	1	
24	Z-GM12-024	CLUTCH COPPER BUSHING	2	

Part No. of Diagram		Description	Quantity (PCS)	
25	Z-GM12-025	KEY 5x5x20	1	
26	Z-GM12-026	GEAR(42T)	1	
27	Z-GM12-027	WASHER	1	
28	Z-GM12-028	SPACER	1	
29	Z-GM12-029	NUT 1/2x20NF	1	
30	Z-GM12-030	SPRING WASHER 1/2"	1	
31	Z-GM12-031	OIL SEAL TC25x38x07	1	
32	Z-GM12-032	BALL BEARING 6004Z	1	
33	Z-GM12-033	PIN	8	
34	Z-GM12-034	SPRING SHEET	8	
35	Z-GM12-035	BALL BEARING 6202Z	1	
36	Z-GM12-036	GEAR(49T)	1	
37	Z-GM12-037	KEY 5x5x30	1	
38	Z-GM12-038	CLUTCH	1	
39	Z-GM12-039	SLEEVE DRIVE	1	
40	Z-GM12-040	KEY 5x5x15	1	
41	Z-GM12-041	3-LAY SHAFT GEAR	1	
42	Z-GM12-042	WORM GEAR SHAFT	1	
43	Z-GM12-043	WORM GEAR	1	
44	Z-GM12-044	GEAR(26T)	1	
45	Z-GM12-045	BALL BEARING 6001Z	4	
46	Z-GM12-046	KEY 4x4x25	1	
47	Z-GM12-047	C-TYPE SNAP RING S16	1	
48	Z-GM12-048	C-TYPE SNAP RING R28	2	
49	Z-GM12-049	C-TYPE SNAP RING S12	1	

Part No. of Diagram		Description	Quantity (PCS)	
50	Z-GM12-050	MOTOR-110V(50/60HZ)	1	
51	Z-GM12-051	MOTOR SHAFT	1	
52	Z-GM12-052	TOP COVER OF MOTOR	1	
53	Z-GM12-053	OIL SEAL TC17x30x07	1	
54	Z-GM12-054	BALL BEARING 6203ZZ	1	
55	Z-GM12-055	BALL BEARING 6202ZZ	1	
56	Z-GM12-056	O SNAP RING G45	1	
57	Z-GM12-057	KNOB FOR SHIFT HANDLE	1	
58	Z-GM12-058	SHIFT HANDLE	1	
59	Z-GM12-059	MACH SCREW 3/16x1/2	4	
60	Z-GM12-060	SHIFT SHAFT	1	
61	Z-GM12-061	SHIFT SELECTOR	1	
62	Z-GM12-062	ECCENTRIC SHAFT	1	
63	Z-GM12-063	SET SCREW	2	
64	Z-GM12-064	SHIFT FORK PLUNGER	2	
65	Z-GM12-065	SHIFTER FIXED SHAFT	1	
66	Z-GM12-066	SHIFT FORK	1	
67	Z-GM12-067	COMPRESSION SPRING	2	
68	Z-GM12-068	COMPRESSION SPRING	2	
69	Z-GM12-069	STEEL BALL 6	2	
70	Z-GM12-070	SPRING PIN 3x22	1	
71	Z-GM12-071	NUT 5/16x18NC	1	
72	Z-GM12-072	INTERNAL PINION(19T)	1	
73	Z-GM12-073	INTERNAL DRIVE GEAR	1	
74	Z-GM12-074	HEAD RING	1	

Part No. of Diagram		Description	Quantity (PCS)	
75	Z-GM12-075	PLANETARY HEAD	1	
76	Z-GM12-076	AGITATING SHAFT	1	
77	Z-GM12-077	OIL SEAL TC20x35x07	1	
78	Z-GM12-078	TAPERED PIN	1	
79	Z-GM12-079	CAP SCREW 1/4x1	1	
80	Z-GM12-080	C-TYPE SNAP RING S15	1	
81	Z-GM12-081	BALL BEARING 6003Z	1	
82	Z-GM12-082	BALL BEARING 6202Z	1	
83	Z-GM12-083	KEY 5x5x15	1	
84	Z-GM12-084	BOWL SUPPORT	1	
85	Z-GM12-085	BOWL PIN	1	
86	Z-GM12-086	SPRING WASHER 5/16"	1	
87	Z-GM12-087	NUT 5/16x18NC	1	
88	Z-GM12-088	BOWL FIXED PLATE	1	
89	Z-GM12-089	BOLT 1/4x2	1	
90	Z-GM12-090	WASHER 1/4"	1	
91	Z-GM12-091	SPRING WASHER 1/4"	1	
92	Z-GM12-092	NUT 1/4x20NC	1	
93	Z-GM12-093	LIFTING BAR	1	
94	Z-GM12-094	FIXED ANGLE BARS	1	
95	Z-GM12-095	LIFTING HANDLE BRACKET	1	
96	Z-GM12-096	LIFT HANDLE	1	
97	Z-GM12-097	COMPRESSION SPRING	1	
98	Z-GM12-098	WASHER 5/16"	1	
99	Z-GM12-099	SET SCREW 5/16x3/8	1	

Part No. of Diagram		Description	Quantity (PCS)	
100	Z-GM12-100	SPRING PIN 3x16	1	
101	Z-GM12-101	SPRING PIN 3x24	1	
102	Z-GM12-102	NUT 5/16x18NC	1	
103	Z-GM12-103	MACH SCREW 1/4x5/8	1	
104	Z-GM12-104	SPRING WASHER 1/4"	1	
105	Z-GM12-105	12L BOWL	1	
106	Z-GM12-106	12L BEATER	1	
107	Z-GM12-107	12L SPIRAL HOOK	1	
108	Z-GM12-108	12L WHIP	1	
109	Z-GM12-109	HEAD RING AND BACK COVER	1	
110	Z-GM12-110	FRONT COVER	1	
111	Z-GM12-111	FIXED RING	1	
112	Z-GM12-112-1	POWER CABLE 110V	1	
113	Z-GM12-113	COLLAR	1	
114	Z-GM12-114	CAPACITOR	1	
115	Z-GM12-115-1	GM12-60HZ GOVERNOR	1	
116	Z-GM12-116-1	GM12-60HZ GOVERNOR PLATE	1	
117	Z-GM12-117	FAN-MOTOR	1	
118	Z-GM12-118	LIMIT SWITCH OF GUARD	1	
119	Z-GM12-119	LIMIT SWITCH OF GUARD	1	
120	Z-GM12-120	LIMIT SWITCH SEAT	1	
121	Z-GM12-121	LIMIT SWITCH SEAT	1	
122	Z-GM12-122	CAPACITOR	1	