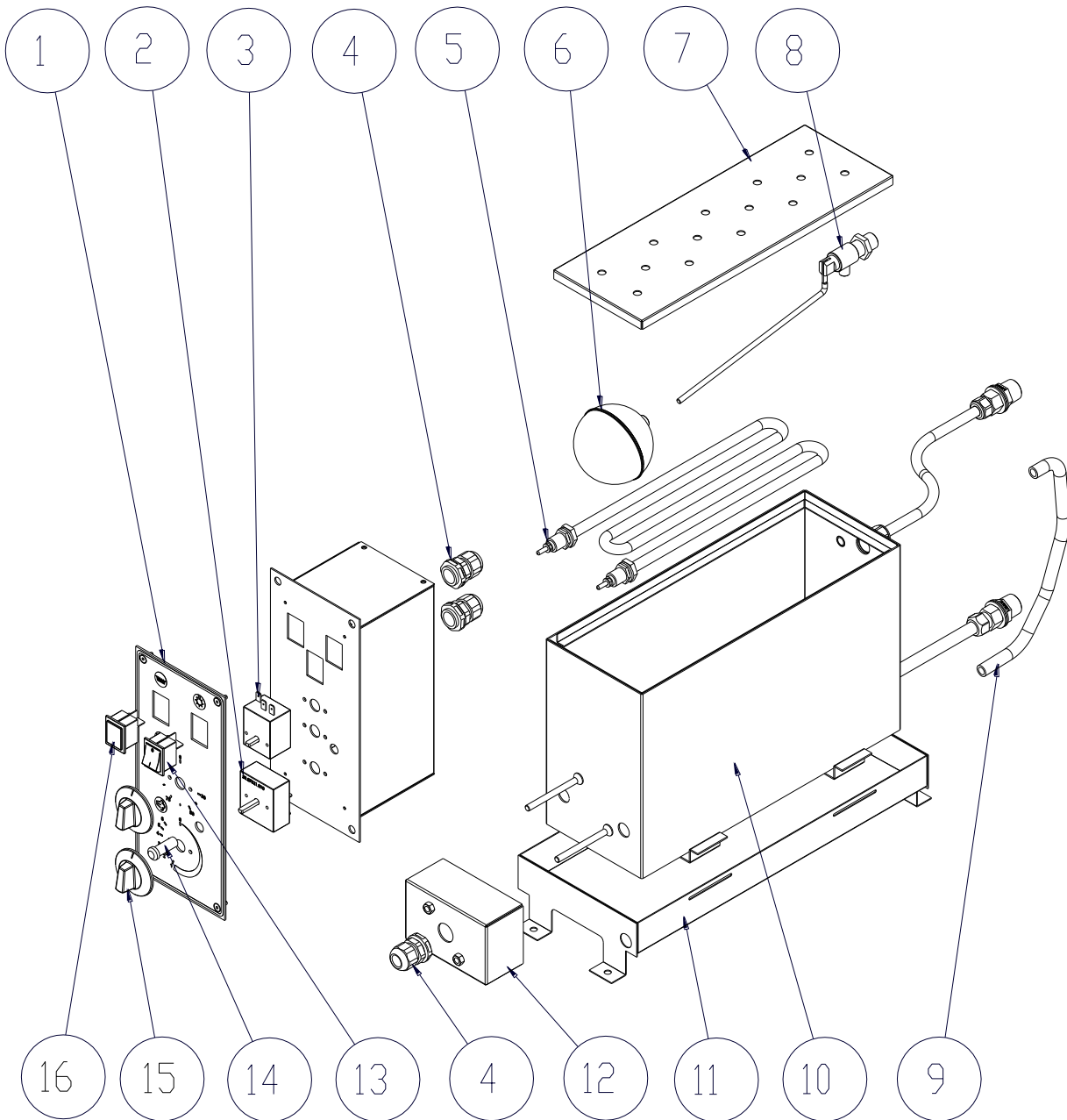


CHAMBER PARTS LIST

N°	Description
1	DOOR HINGE
2	CHAMBER KNOB
3	CHAMBERS BEARING
4	CHAMBER DOOR MAGNET
5	CHAMBER STYLO OVERHEAD LIGHT
6	TROLLEY LEFT RAIL
7	TROLLEY RIGHT RAIL
8	CHAMBER RESISTANCE
9	FAIRLEAD PG21
10	THERMOSTAT KNOB
11	LIGHT LAMP
12	PROOFING CABINET ADHESIVE MEMBRANE
13	BIP LIGHTING SWITCH 0-1
14	THERMOSTAT 0-90° CHAMBERS
15	FAIRLEAD PG13.5
16	NEUTRAL CHAMBER ADHESIVE MEMBRANE
17	REAR WHEEL WITHOUT BRAKE
18	FRONT WHEEL WITH BRAKE
19	TROLLEY (CHAMBER H=700) TROLLEY (CHAMBER H=940)
20	RIGHT DOOR (CHAMBER H=700) RIGHT DOOR (CHAMBER H=940)
21	LEFT DOOR (CHAMBER H=700) LEFT DOOR (CHAMBER H=940)

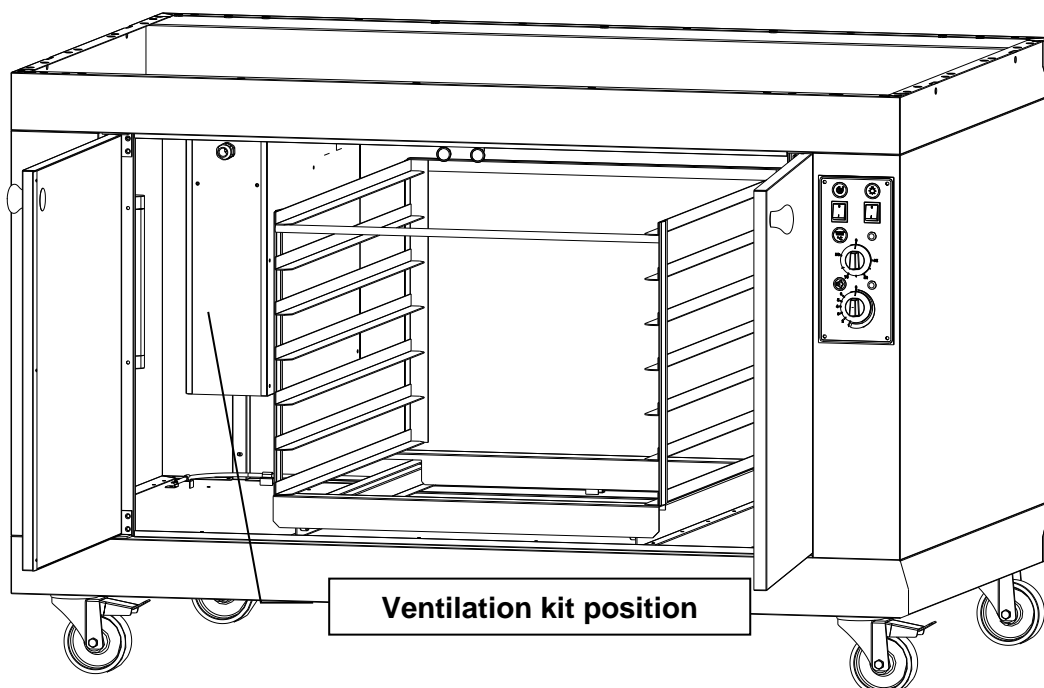
HUMIDIFIER GROUP EXPLODED VIEW

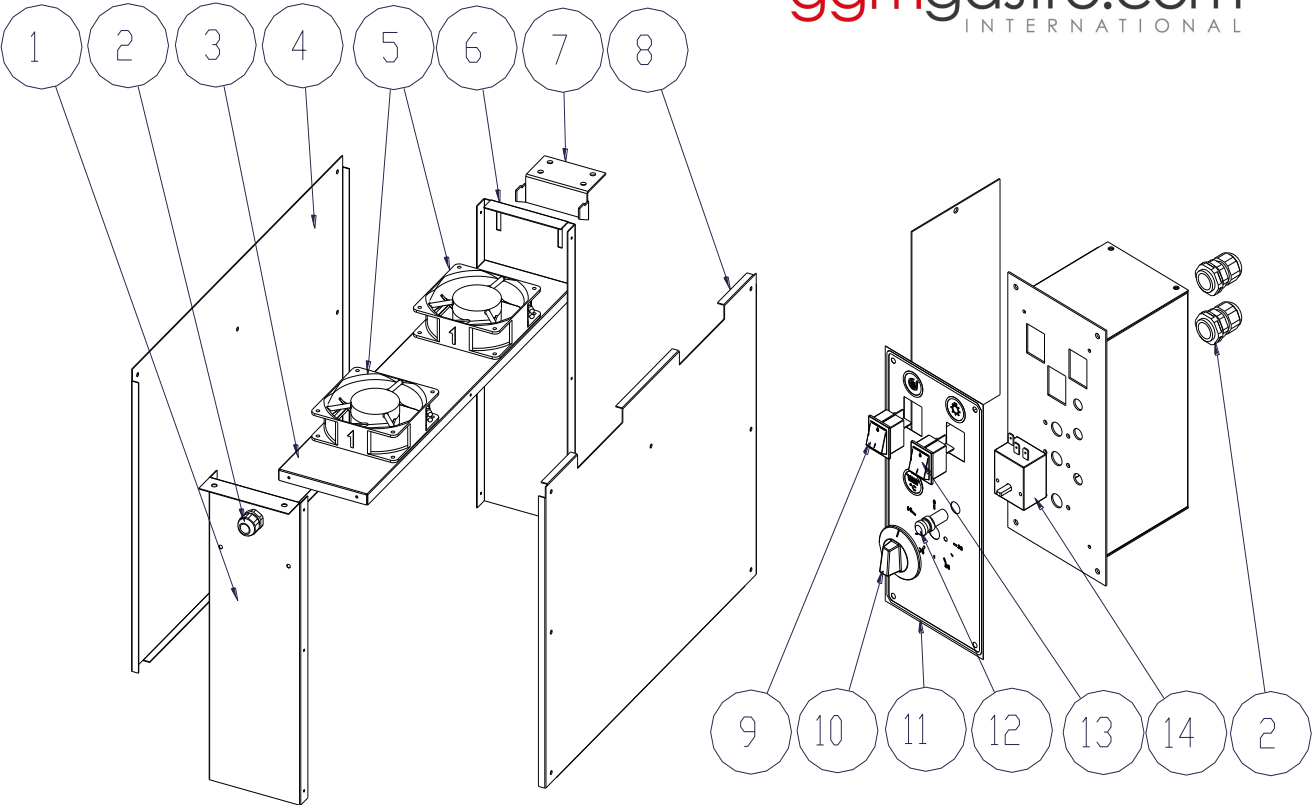


HUMIDIFIER GROUP PARTS LIST

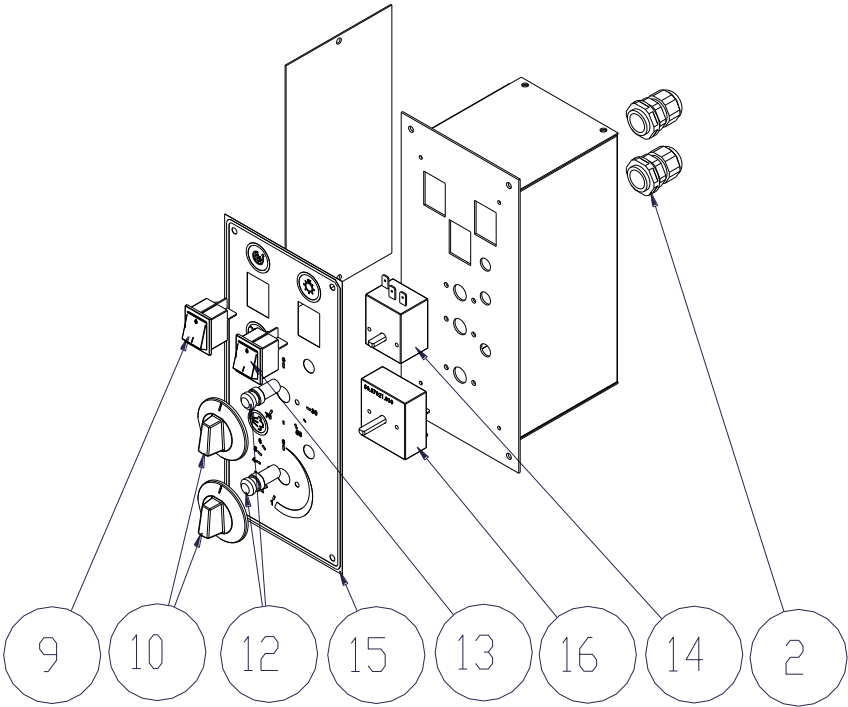
N°	Description
1	PROOFING AND HUMIDITY CABINET ADHESIVE MEMBRANE
2	ENERGY REGULATOR
3	THERMOSTAT 0-90° CHAMBER
4	FAIRLEAD
5	CHAMBER HUMIDIFIER RESISTANCE
6	HUMIDIFIER BALL FOR FLOATING
7	LID
8	HUMIDIFIER FLOATING BAR 3/8"
9	SILICONE PIPE
10	HUMIDIFIER TANK
11	HUMIDIFIER DRAINING TANK
12	CONNECTION LID HUMIDIFIER'S RESISTANCE
13	BIP LIGHTING SWITCH 0-1
14	ROUND LIGHT LAMP
15	ENERGY REGULATOR / THERMOSTAT KNOB
16	LIGHT LAMP

EXPLODED DIAGRAM OF THE VENTILATION KIT





Exploded diagram of the ventilation kit and leavening cabinet control panel with ventilation



Exploded diagram of the leavening chamber control panel with ventilation and humidity

TABLED LIST OF VETILATION KIT PARTS

N°	Description
1	FRONT PANEL VENTILATION KIT (CABINET H=700)
	FRONT PANEL VENTILATION KIT (CABINET H=940)
2	FAIRLEAD
3	CONNECTING PANEL VENTILATION KIT
4	BLIND SIDE PANEL VENTILATION KIT (CABINET H=700)
	BLIND SIDE PANEL VENTILATION KIT (CABINET H=940)
5	VENTILATION KIT FAN
6	VENTILATION KIT BACK PANEL (CABINET H=700)
	VENTILATION KIT BACK PANEL (CABINET H=940)
7	VENTILATION KIT SUPPORT
8	VENTILATED SIDE PANEL VENTILATION KIT (CABINET H=700)
	VENTILATED SIDE PANEL VENTILATION KIT (CABINET H=940)
9	BIP LIGHTING SWITCH 0-1
10	ENERGY REGULATOR / THERMOSTAT KNOB
11	LEAVENING CABINET WITH VENTILATION ADHESIVE MEMBRANE
12	ROUND LIGHT LAMP
13	BIP LIGHTING SWITCH 0-1
14	THERMOSTAT 0-90° CHAMBER
15	LEAVENING CABINET WITH VENTILATION AND HUMIDITY ADHESIVE MEMBRANE
16	ENERGY REGULATOR



Source separation for recycling. This product must not be disposed of together with normal domestic waste. Depending on local standards and conditions, services for collecting separated waste may be available at centers provided by the local council.
