

Operation Instruction



Safeguards

This appliance is not for use by persons (including children) with reduced physical, sensory or mental capabilities, or lack of experience and knowledge, unless they have been given supervision or instruction concerning use of the appliance by a person responsible for their safety. Children should be supervised to ensure that they do not play with the appliance.

The Hand Currywurst Slicer has sharp-edged blades.

Make sure that you are not getting hurt during working and cleaning process.

Operating

Place a collecting bowl on the base plate. Put the sausage crosswise in the funnel. Then press the slicing arm. The sausage pieces fall in the bowl.

Storage

Always clean the appliance before storing. Ensure to store the appliance where it is clean, dry and safe from frost and inadmissible strain and where it is out of reach of young children. Place the appliance on a clean and stable surface, where it can not fall.

Warranty

We guarantee that all our products are free of defects at the time of purchase. Any demonstrable manufacturing or material defects will be to the exclusion of any further claim and within 1 year after purchasing the appliance free of charge repaired or substituted.

There is no Warranty claim of the purchaser if the damage or defect of the appliance is caused by inappropriate treatment, over loading or installation mistakes. The warranty claim expires if there is any technical interference of a third party without an written agreement.

The purchaser must present the sales slip in assertion claims and has to bear all charges of costs and risk of the transport.

Care and cleaning

DO NOT place the appliance in an automatic dishwasher.

Caution: The blades are sharp-edged. First wash the appliance with water. Stained dirt can be removed with a cleaning brush. Then clean thoroughly with water.

disassembly



1. Open all rotary buttons.



2. Carefully remove the shaft.

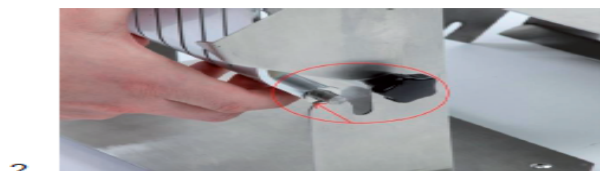


3. Remove the plate with the 11 sections. Attention ring washer!
(2 pcs. right and left on the bar).
Please do not loose!

assembling



1. Put back the plate with the 11 sections.



2. The ring washers has to be put „inside“ to fix the knives exactly into the grooves.



3. Fix correctly.



4. After returning the plate and the shaft each rotary button has be tightened.