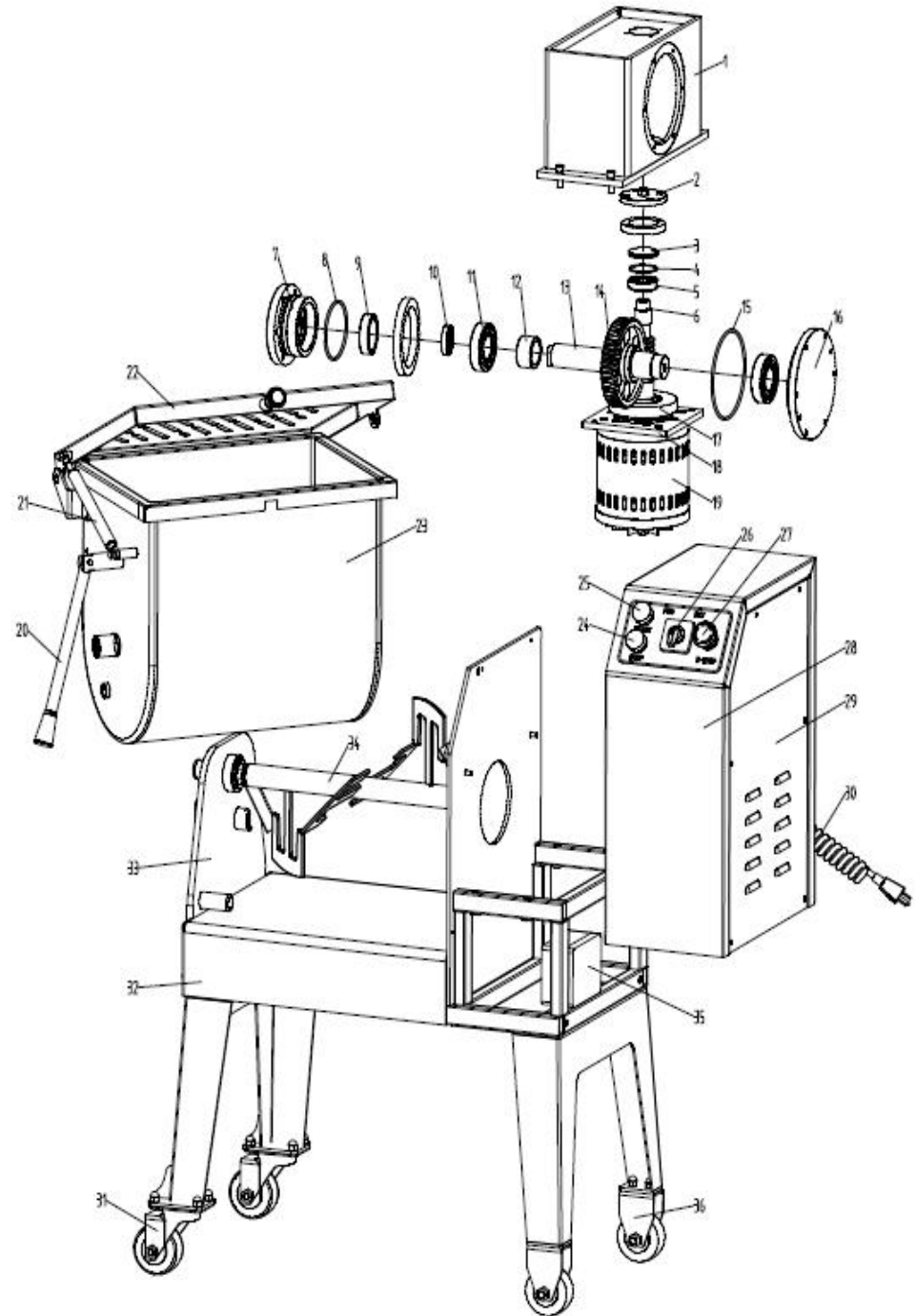


EXPLODE DRAWING WITH PRICE FOR FMH40

Item	Material code	Name	Qty
1	2.HLM40A0400-0000511601	Worm gear box	1
2	2.HLM40A0417-0000511501	Worm rear end cover	1
3	2.HLM40A0418-0000511501	Worm adjustment pad	1
4	4.01.42 51 8GB3452 1	O-ring	1
5	4.01.30204GBT294166	Tapered roller bearing	1
6	2.HLM40A0413-0000511501	Worm	1
7	2.HLM40A0414-0000511801	Worm gear front end cover	1
8	4.01.82 53 55GB3452 1	O-ring	1
9	3.HLM40A0420-0000901	Front side bushing	1
10	4.01.FB35450821	framework oil seal	1
11	4.01.6207GBT294166	deep groove ball bearing	2
12	2.HLM40A0419-0000511501	main shaft sleeve	1
13	2.HLM40A0411-0000510701	main shaft	1
14	2.HLM40A0412-0000510011	Worm gear 50X2.5	1
15	4.01.1283 55GB3452 1	O-ring	1
16	2.HLM40A0415-0000510201	Worm gear rear end cover	1
17	4.01.30206GBT294166	Bearing	1
18	2.HLM40A0410-0000511601	Motor connection plate	1
19	1.04.HLM400241420	Motor	1
20	2.HLM40A0310-0000510701	Handlelever	1
21	4.02.00000604	Gas Spring	1
22	2.HLM40A07-0000510702	Cover Assembly	1
23	2.HLM40A0300-0000510701	Pot	1



24	1.05.015211HB320LAY16	Button Switch	1	
25	1.05.015111HB320	Button Switch	1	
26	1.05.023011HMCLW2620	Transfer switch	1	
27	1.05.105211LA42J01/RS	Emergency stop	1	
28	2.HLM40A0801-0000510701	Outer cover	1	
29	2.HLM40A09-0000510701	Rear cover	1	
30	1.01.01.18074101	power cord	1	
31	4.02.00000428	Universal wheel	2	
32	2.HLM40A01-0000511601	Rack	1	
33	2.HLM40A0201-0000511601	Front bracket plate	1	
34	2.HLM40A05-0000510701	Mixer Assembly	1	
35	1.03.00050005	Electrical box	1	
36	4.02.00000501	Directional wheel	2	