

GGM GASTRO INTERNATIONAL GMBH
WEINERPARK 16 – 48607 OCHTRUP

[TEL: +49 \(0\) 2553 / 7220 0](tel:+490255372200) – FAX: +49 (0) 2553 7220 200
www.gmgastro.com – info@gmgastro.com

USER GUIDE

MEAL SEAL MACHINE

CONTENTS

A – GENERAL INFORMATION	Page 3
A1 – PRODUCT DESCRIPTION	Page 4
A2 – TECHNICAL INFORMATION	Page 4
A3 – TRANSPORTATION AND STORAGE CONDITIONS	Page 4
A4 – UNPACKING	Page 5
B – INSTALLATION	Page 5
C – SAFETY INSTRUCTIONS	Page 6
D – OPERATION INFORMATION	Page 7
E – CLEANING AND MAINTENANCE	Page 9
F – TROUBLESHOOTING	Page 10
G – EXPLODING DRAWING AND SPARE PART LIST	Page 11
H – ELECTRICAL CIRCUIT DIAGRAM	Page 13

A – GENERAL INFORMATION

READ CAREFULLY ALL INSTRUCTIONS AND WARNINGS IN THIS USER MANUAL. THIS MANUAL CONTAINS IMPORTANT INFORMATION ABOUT THE SAFE INSTALLATION, USE AND MAINTENANCE OF YOUR PRODUCT AND NECESSARY WARNINGS FOR YOU TO USE THE MOST USEFUL FROM YOUR DEVICE.

KEEP THIS MANUAL IN A SAFE AND EASY REACH FOR FUTURE USE.

THE MANUFACTURER SHALL NOT BE LIABLE FOR ANY DAMAGES TO HUMAN, ENVIRONMENT, OR OTHER MATERIALS CAUSED BY THE IMPROPER USE OF THE DEVICE, RESULTING FROM THE TRANSLATION OR EDITION OF THIS BOOKLET.

WILFUL DAMAGE TO DEVICE, OMISSION, DAMAGES CAUSED BY NOT SUITABLE TO INSTRUCTIONS AND REGULATIONS OR WRONG CONNECTIONS AND UNAUTHORIZED INTERVENTION TO THE DEVICE WILL VOID THE WARRANTY OF THE PRODUCT.

A1 – PRODUCT DESCRIPTION

This appliance is a meal seal machine designed for use in industrial kitchens and recommended for use by professional users.

A2 – TECHNICAL INFORMATION

Product Code	GGM-TBK01-E15-0010
Dimensions (mm)	310x570x240
Weight (kg)	25
Gross Dimensions (mm)	360x620x290
Gross Weight (kg)	27
Electric Input (V)	230
Cable (mm²)	3x1,5
Power (W)	750
Fuse (A)	1x16

A3 – TRANSPORTATION AND STORAGE CONDITIONS

- The device should be placed in the box vertically.
- If the transport distance is far, it should be moved slowly, if necessary, the device should be fixed to the pallet against shaking or its balance should be maintained by a person.
- While carrying the product, do not hit or drop it.
- If the product is to be stored before the first use, the original packaging must be stored unopened.
- If it is to be stored after the device, it must be protected by cleaning and packaging.
- During pallet transport, forklift legs should be placed under the pallet while transported.
You must contact the main body at minimum two points with the forks of the forklift. Otherwise, the pallet cannot be transported in a balanced way.



A4 – UNPAKING

- Please unpack the package according to the security codes and ordinances of current country and get rid from the pack. Parts which contacts with food are produced by stainless steel. All plastic parts are marked by material's symbol.
- Please check that all parts of appliance had come completely and if they are damaged or not during the shipping.
- After the installation of the device, please throw away of the packaging materials by paying attention to safety and environmental conditions. For reuse of waste packages, throw them into the relevant recycling bins according to their properties (foil, cardboard, Styrofoam). When throw away of any electrical equipment, make it unusable by cutting the cable.

B – INSTALLATION

- Installation should be done by a qualified technician according to the instructions. Our company cannot be held responsible for any damage to people, animals or property due to incorrect installation.
- In case the device malfunctions, turn off the device. Only a service center authorized by the manufacturer should service the device. Ask for original spare parts.
- The ground on which the device will be placed must be flat and it must be ensured that the device operates on a scale. Take necessary precautions against the risk of the product tipping over.
- Connection to the electrical power supply must be made by a competent person.
- Please be sure that the voltage connected to appliance must be equal with the voltage which is on appliance's label.
- The ground connection of the device must be made in accordance with standards and safety rules.
- The grounding of the device should be connected to the grounding line which is the closest panel of electrical installation.
- Device electrical connection, main fuse and leakage current fuse must be made in accordance with the current regulations and rules.
- In places with high electrical noise, an isolation transformer and line filter should be used on the supply line.
- If more than one electronic device is used, a separate supply line must be installed for each device.

- No control circuit should be connected to the supply line of the device.
- Cables that carry the sensor and input signals to the device should be carried as far as possible and separately from the supply, control, switched inductive load cables and they should be prevented from being affected.
- Necessary precautions should be taken to prevent liquid leakage and metal parts to become conductive into the device. Otherwise, accidents such as fire and electric shock may occur.

C – SAFETY INSTRUCTIONS

- This device must be installed in accordance with current regulations and used only in a well-ventilated area. Consult instructions for setting up the device and before use.
- The device is made for industrial use and should only be used by personnel trained in the device.
- Do not interfere with the device without using appropriate protective equipment.
- Keep the device cable away from hot surfaces.
- For the long lasting of the device, never run it idle for a long time. When the device is not used, it must be turned off. In long-term use, the device should be turned off and rested for at least 10 minutes every 2 hours.
- All kinds of flammable solid liquid materials (clothes, alcohol and derivatives, petro-chemical products, wood and plastic materials, curtains, etc.) should never be kept in the area where the device is operated.
- Because of any reason if there is a fire or flame flare where the appliance is used, turn off all gas valves and electric contractor switch quickly and use fire extinguisher. Never use water to extinguish the fire.
- Damages caused by lack of grounding connection will not be covered under warranty.
- Do not use non-original spare parts on the device. In case you use for the device spare parts not supplied by our company, the device will be out of warranty

D – OPERATION INFORMATION

It should payed attention to warnings as below:

- When the device is energized, no button should be touched until the ON / OFF button lights up.
- Information about the touch type is given in figure 1 above.

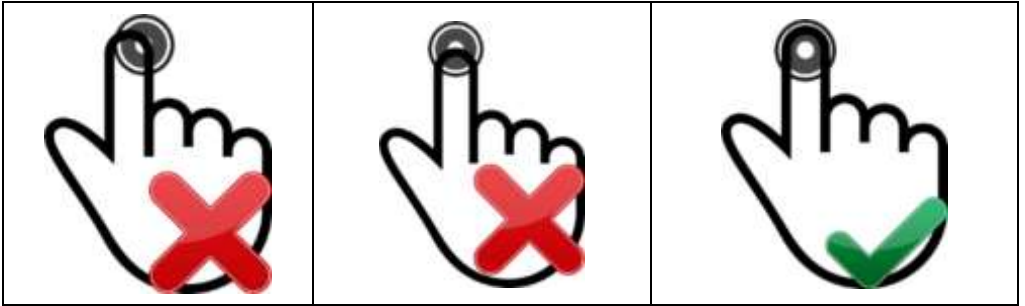


Figure 1: Touch Alerts

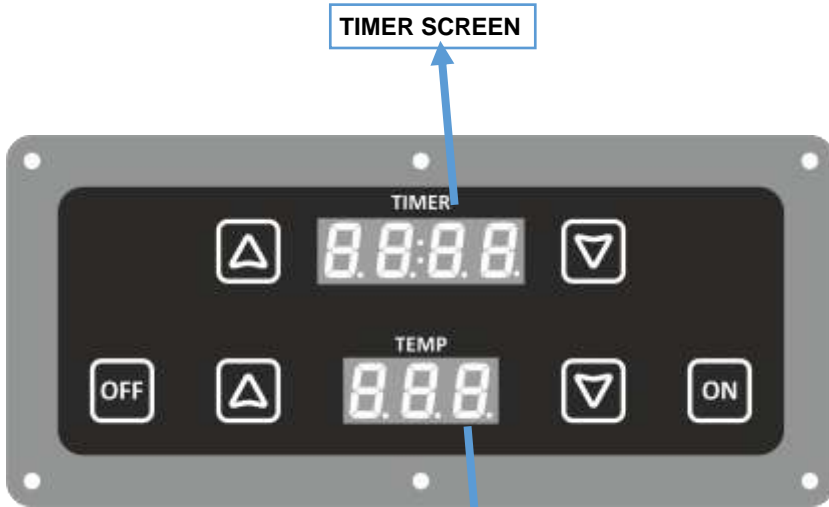






Figure 2: Control Panel

HEAT SCREEN

	<p>Press and hold the button to turn on the device. When it is turned off, the LED on the button lights up in red. When the device is turned on, the LED lights up green.</p>
	<p>Press and hold the button to turn off the device.</p>
<p>TIMER</p>	<p>When the device is on, the desired time can be set with the help of the  buttons next to the timer screen.</p>
<p>TEMPERATURE</p>	<p>When the device is switched on, the desired temperature is set by the  buttons next to the temperature screen. The current temperature can be seen 5 seconds after the set temperature value.</p>

While the device is on, 10A relay output becomes active when information comes from SW1 input. The relay output time is the time you set on the timer screen. According to the set degree you set on the temperature screen, 30A relay output becomes active. When it reaches the set degree, it stops giving output.

E – CLEANING AND MAINTENANCE

Cleaning and maintenance after every use;

- ✓ Make sure that the plug is not plugged in or the switch is turned off while cleaning the device.
- ✓ Clean the surface of the device after each use.
- ✓ If the device will not be used for a long time, the surfaces should be covered with a thin layer of Vaseline.
- ✓ Do not use abrasive cleaning chemicals as these can leave harmful residues.
- ✓ Do not use pressurized water and steam while cleaning the device.
- ✓ Do not clean the outer stainless surface of the device with cleaner that can scratch the material such as wire wool.

Periodic cleaning and maintenance;

- ✓ Maintenance should be done by qualified person.
- ✓ Parts that need to be removed during periodic cleaning should be removed and reassembled by technical service personal.
- ✓ According to the frequency of use, the electrical maintenance of the device should be done by spraying dry air after the electrical connection is cut.

F – TROUBLESHOOTING

PROBLEM	REASON	HOW TO REMOVE
THE APPLIANCE DOESN'T OPERATE	<ul style="list-style-type: none"> - The device may not be receiving electricity. - Circuit breaker may not be open. 	<ul style="list-style-type: none"> - Check the electrical connection. - Check the fuse box connection.
LID ISN'T ABLE TO BE CLOSED	<ul style="list-style-type: none"> - Temperature adjustment button is not working or temperature setting may be wrong. - Resistance may not be connected properly or may be burnt out. 	<ul style="list-style-type: none"> - Check the temperature setting. - Contact our authorized services.
DEVICE STOPPED	<ul style="list-style-type: none"> - The device may stop due to low voltage. 	<ul style="list-style-type: none"> - Check the voltage.

✓ If any of the security functions are not working, do not use the device and contact our authorized services.

DEVICE ERROR CODES

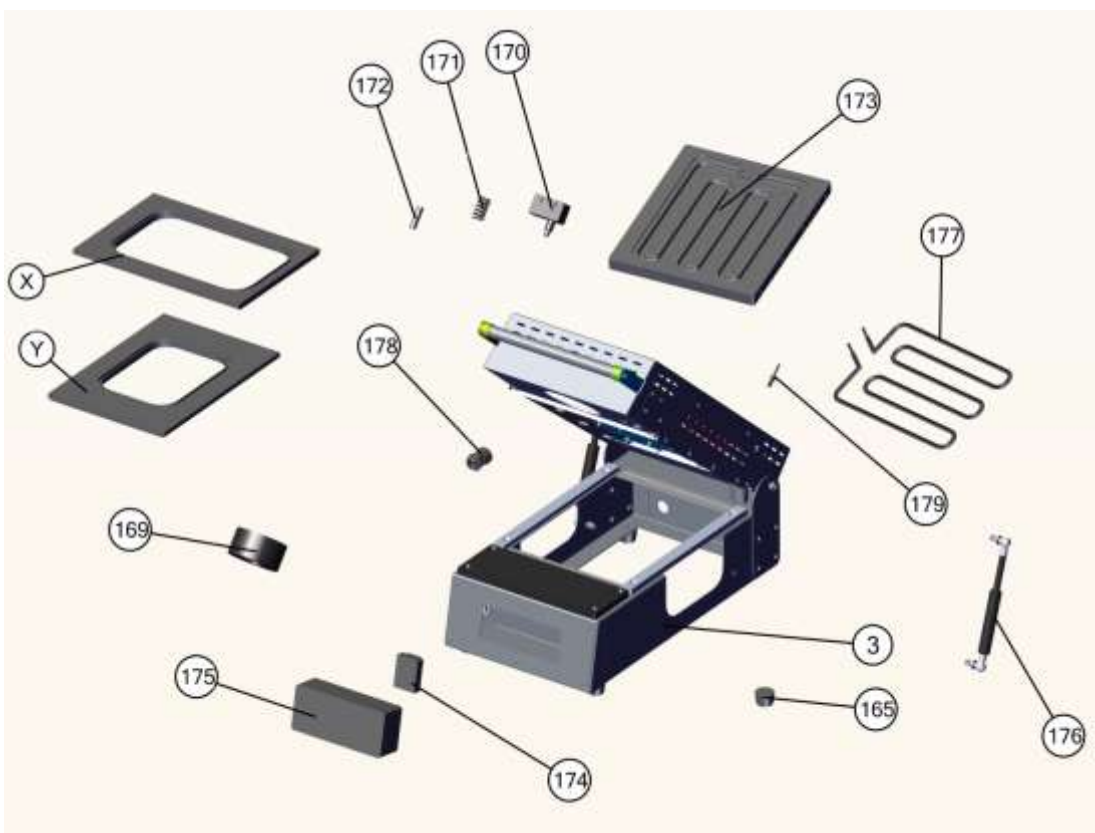
E- 1 Phase Reading Error: Check the power connection of the device.

E- 2 Thermocouple Reading Error: Check the thermocouple.

E- 4 Thermocouple Connection Error: Check the thermocouple connections.

E- 8 Relay Card Temperature Error: The relay card temperature needs to be reduced.

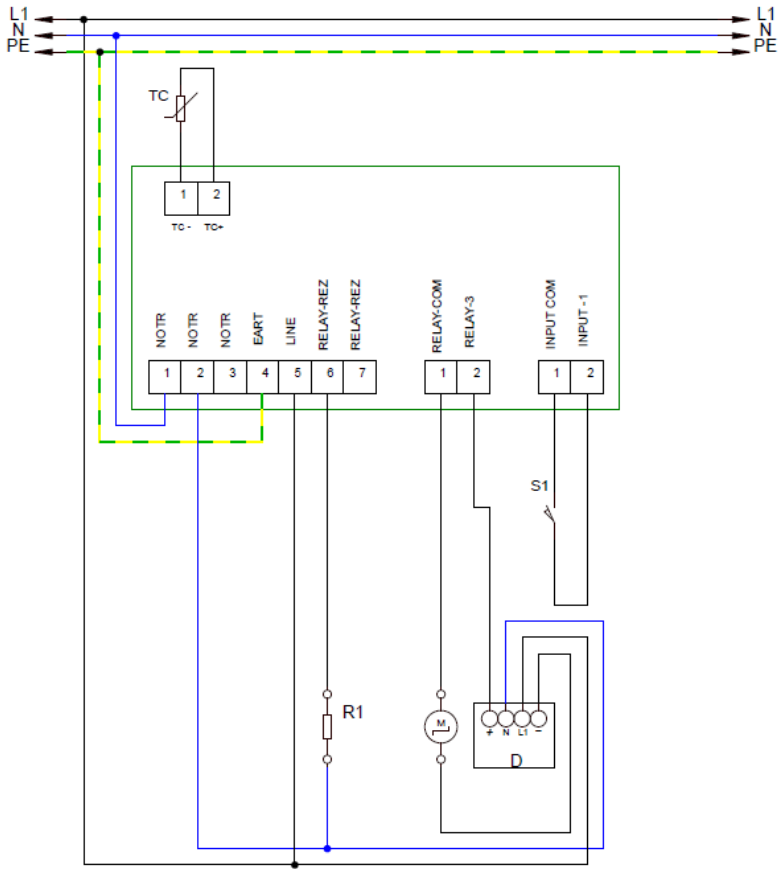
G – EXPLODING DRAWING AND SPARE PART LIST



G – EXPLODING DRAWING AND SPARE PART LIST

MEAL SEAL MACHINE		
NO	PART NAME	P.CODE
3	BASE FRAME	-
165	FEET	OMK-YP-00161
169	MAGNET	OMK-YP-00165
170	SWITCH	OMK-YP-00166
171	SPRING	OMK-YP-00167
172	SPRING PIPE	OMK-YP-00168
173	ALUMINIUM	OMK-YP-00169
174	DIODE	OMK-YP-00170
175	CARD	OMK-YP-00171
176	SHOCK ABSORBER	OMK-YP-00172
177	RESISTANCE	OMK-YP-00173
178	ENERGY SLEEVE INPUT	OMK-YP-00174
179	HEAT SENSOR	OMK-YP-00175
X	BIG MOLD	-
Y	SMALL MOLD	-

H – ELECTRICAL CIRCUIT DIAGRAM



TC	THERMOCOUPLE
S1	LID SWITCH
R1	RESISTANCE 700W
M	MAGNET
D	DIODE