

RAPID SAUSAGE FILLER



● PLEASE READ INSTRUCTION THOROUGHLY BEFORE USING THE EQUIPMENT

1.Introduction:

SF series rapid sausage filler is suitable for meat processing enterprise and catering to fill sausage and ham sausage, etc. The machine adopts the hydro-cylinder to push forward and uses the foot switch. The electric elements and the fluid-pressure elements which are high-quality products imported or made in China, have the steady performance.

2.Operating Instruction:

a.please according the data plate to choose the correct supply. The supply must has safe ground wire.

b. If is the three-phase power supply, please care the motor's rotating direction. The machine cannot work normally if motor rotate counter; please to exchange two of the three-phase at will.

c.Put the mixed meat filling into the bowl and tighten the pressure cover.

d.Put on the casing and adjust the changeover switch on “clockwise” position, then it will begin filling sausage when you step on the foot switch.

e.Adjust the changeover switch on “counter clockwise” position; then step on the foot switch, the piston will return to the bottom of the bowl.

3.Service and Maintenance:

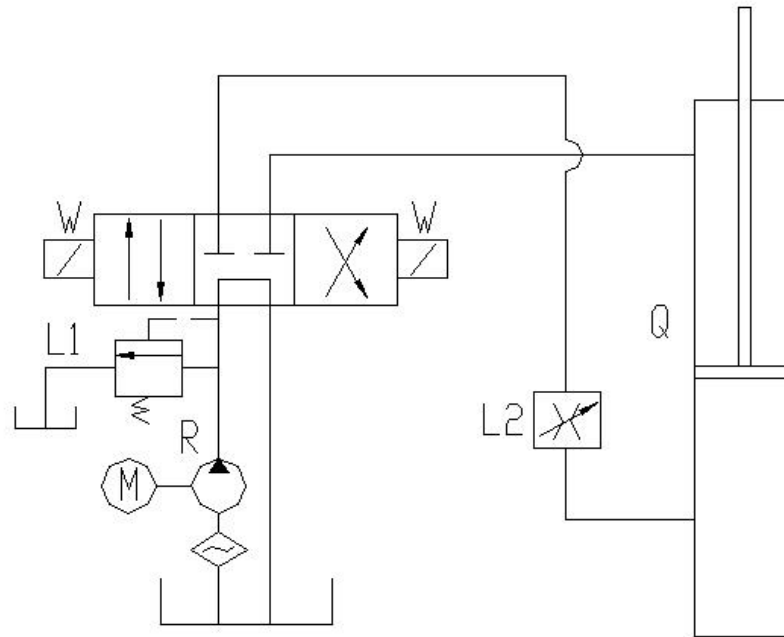
a.Before or after use, please clean bowl, pressure cover, the body and the pipe.

b.Turn the pressure valve which is under the connecting part, then you can adjust the return speed of piston.

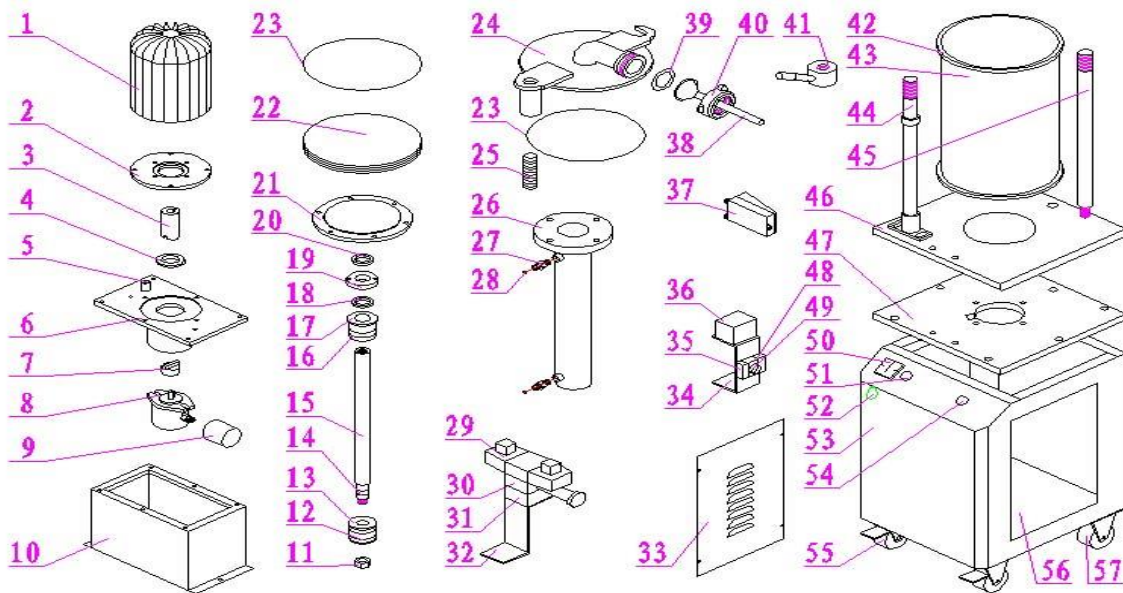
c.Please do not dismount the hydraulic elements, If the hydraulic system has the problem please call on an expert to maintain.

4.Technical specifications:

Model	Volum e	Rated frequency	Voltage	Power	Productivity	Net weight	Dimension
-------	------------	--------------------	---------	-------	--------------	---------------	-----------



7. Hydraulic stuffer exploded view



Illus	Part No.	Name of part	Illus	Part No.	Name of part
1	SF- 1	Motor	29	SF-29	Magnetic valve
2	SF- 2	Flange	30	SF-30	Overflow valve
3	SF- 3	Motor Connector	31	SF-31	Circuit block
4	SF-4	Oil seal	32	SF-32	Support frame
5	SF-5	Oil box cap	33	SF-33	Side plate
6	SF-6	Oil box plate	34	SF-34	Support frame
7	SF-7	Oil pump connector	35	SF-35	Fuse
8	SF-8	Oil pump	36	SF-36	Transformer
9	SF-9	Filter	37	SF-37	Foot pedal
10	SF-10	Oil box	38	SF- 38	Stuffing nozzle
11	SF-11	Screws	39	SF-39	Gasket for nozzle

12	SF-12	External Gasket for oil tank piston	40	SF-40	Trefoil nut
13	SF-13	Oil tank piston	41	SF-41	cylinder Locking Screw
14	SF-14	Internal Gasket for oil tank piston	42	SF-42	Gasket for cylinder
15	SF-15	Piston Rod	43	SF-43	Cylinder
16	SF-16	External gasket for Guide sleeve	44	SF-44	Bar
17	SF-17	Guide sleeve	45	SF-45	Bar
18	SF-18	Internal gasket for Guide sleeve	46	SF-46	Plate
19	SF-19	Dust cover	47	SF-47	Support plate
20	SF-20	Internal gasket for dust cover	48	SF-48	Relay
21	SF-21	Piston Support frame	49	SF-49	Timer
22	SF-22	Plunger/piston	50	SF-50	Switch
23	SF-23	Gasket for piston	51	SF-51	Emergency switch
24	SF-24	Top cover	52	SF-52	Overload protection
25	SF-25	Spring	53	SF-53	Main body
26	SF-26	Oil tank	54	SF-54	Throttle valve
27	SF-27	Oil tank connector	55	SF-55	Castors
28	SF-28	Gasket for oil tank connector	56	SF-56	Back cover
			57	SF-57	Universal castors