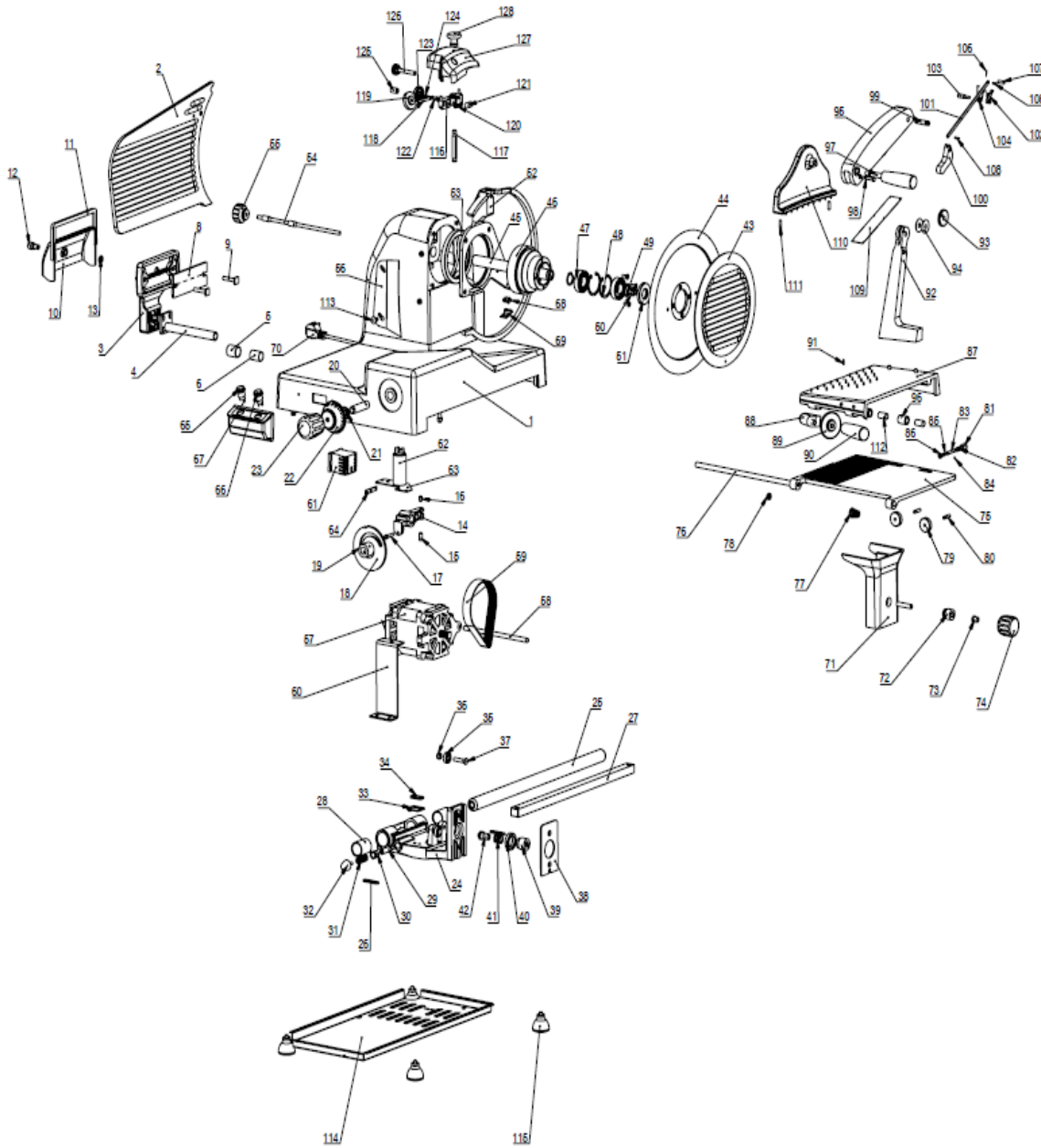


EXPLODED DRAWING - AMVH350



PART NO.	Material Code	DESCRIPTION
1	2.HBS350C01-25101801	body
2	2.HBS350C04311-25101801	locating plate
3	2.HBS350C0400011-25101801	stand of locating plate
4	2.HBS350C04000102-510001	move shaft
5	2.HBS350C06002-5100701	shaft sleeve
6	4.02.00000018	copper bush
7		
8	2.HLQ350A04000201100	adjustment plate
9	2.HLQ350A0400-5100300	screw
10	2.HLQ350A04000402100	cover
11		silicone strip
12	2.HLQ350A0400-07100300	Small handle
13	4.01.D09GBT89626	C- ring
14	2.HBS350C02-00005100201	locating plate sliding seat
15	2.HS300-064511030	adjust screw
16	2.HS300-064611030	adjust screw
17	2.HBS350C04-00005100701	Cam pin
18		cam plate
19		Cam sleeve

20	2.HLQ350A0500-04120140	handle spindle
21	2.HLQ350A0500-04100300	spacer
22	2.HLQ350A05000202400	dial
23	2.HLQ350A05000102100	handlebar
24	2.HLQ350A10100102100	sliding block
25	2.HLQ350A-0142120140	Circular orbit
26	2.HLQ350A0166120240	pressing plate
27	2.HLQ350A0141120180	square orbit
28	4.02.00000255	sliding bearing
29	2.HLQ350A1010-06120340	Spring shaft
30	2.HLQ350A1010-04110300	Copper nut
31	4.02.00000030	Slide buffer spring
32	3,0000128	Rubber buffer
33	2.HLQ350A1010-14120240	Limiting plate
34	2.HLQ350A1010-15120240	Threaded plate
35	4.01.629GBT294166	Bearing
36	2.HLQ350A1010-30100300	Spacer
37	2.HLQ350A1010-31100300	screw
38	2.HLQ350A10100701100	Fixed plate
39	2.HLQ350A1010-10100370	barrel
40	2.HLQ350A1010-11100300	Round nut
41		Limit spring
42	2.HLQ350A1010-09100300	Locating pin
43	2.HLQ350A013202100	blade protection plate
44	2.DP3505722501100	blade
45	2.HLQ350A02000207100	spindle of blade
46	2.HLQ350A02000102100	Sleeve of blade
47	4.01.6205_2RSGBT294166	deep groove ball bearing
48	4.01.52GBT893_115	blocking ring for hole
49	4.01.D25GBT894_111	blocking ring for bearing
50	2.HLQ350A0146100300	Blade guard installation block
51	4.01.FB2552721	oil seal
52	2.HLQ350A0135A02100	blade protection ring
53	4.01.FB1051301221	oil seal
54	2.HLQ350A1000-01100300	pull rod
55	2.HLQ350A10000202100	handlebar
56	2.HLQ350A7000107200	scraping board
57	1.04.05001405100	motor
58	2.HBS350C12-0000510701	motor shaft
59	4.01.24GBT1658810455151	belt
60	2.HBS350C08-00005101601	motor adjust plate
61	1.05.073011NC6-0610	AC contactor
62		capacitance
63	2.HLQ350A080001000	Capacitor mounting plate
64		Grounding plate
65	1.05.013022LAS1A	switch
66	1.05.013022QN19A2	switch
67	3.HLQ350A08000201010401	switch box
68	1.05.035012HBSKW4A5T	microswitch
69	2.HLQ350A08000507100	stand of microswitch
70		wire and plug
71	2.HBS350C101016-25101801	stand of sliding frame

72	2.HLQ350A1010-25-3100300	Limit sleeve
73	2.HLQ350A1010-25-2100300	Locking sleeve
74	2.HLQ350A1010250102100	Handlebar
75	2.HBS350CA10100101-25101801	Bedplate
76	2.HBS350CA101009-5100701	shaft
77	2.HBS350C101003-45102401	Conical spring
78	2.HBS350C06002-5100701	shaft sleeve
79	3.HBS350CA1010110090051000	Roller
80	2.HBS350CA101012-45101501	screw
81	2.HBS350CA101026-5100701	knob
82	2.HBS350CA101024-45102401	Spring
83	2.HBS350CA101022-45101501	shaft
84	4.01.M03004GBT75076	screw
85	2.HBS350CA101025-45101501	shaft
86	2.HBS350CA101023-45101501	Locking wheel
87	2.HBS350CA10100201-25101801	Activity table
88	2.HLQ350A10102702100	Mobile handle seat
89	2.HLQ350A10102902100	Disc wheel
90	2.HLQ350A10102802100	Mobile handle
91		screw
92	2.HBS350CA101004-25101801	Pressure block support arm
93	2.HBS350CA101031-45101501	Ratchet wheel
94		Plastic spacer
95	2.HBS350CA101005-25101801	Rotating arm
96	2.HBS350C1010191-5100701	Bearing sleeve
97	2.HBS350CA101027-45101501	shaft
98		Release shaft
99	2.HBS350CA101008-5100701	pin shaft
100	2.HBS350CA101028-25101801	Fingerguard bracket
101	2.HBS350CA101034-45101601	crank
102	2.HBS350CA101032-45101501	pawl
103		Threaded pin shaft
104	2.HLQ350C101038-4512301	Torsion spring
105		Pin
106		Bending clamp
107		Support column
108	2.HBS350CA101008-5100701	pin shaft
109	2.HBS350CA101037-45101601	Sealing plate
110	2.HBS350CA10100601-25101801	pressor
111		Limit column
112	4.02.00000255	sliding bearing
113	2.HLQ350A070002110100	small handle
114	2.HLQ350A012101100	baseboard
115	3.HBS30010002060102	feet
116	3.HLC3000732020201	stand of stone
117	2.HBS3000743-0000511501	locating shaft
118	2.HS300-0741120640	grinding wheel spindle
119	7.08.02.0000005	trim stone
120	4.02.00000041	Spring
121	2.HS300-0742120640	knob
122	2.HS300-0748120640	grinding wheel spindle
123	7.08.02.0000006	flat stone
124	4.02.00000042	Spring
125	2.HS300-0749120640	knob

126	3.HBS30000941070100	s/s straight grain handle
127	2.HLQ350A102006021	grinding cover
128	2.HLQ350A10200902300	Handle