

CUTTER MIXER

CONTENTS

A	GENEERAL INFORMATION	Page 2
A1	PRODUCT DESCRIPTION	Page 3
A2	TECHNICAL INFORMATION	Page 3
A3	TRANSPORTATION	Page 4
A4	UNPACKING	Page 4
B	INSTALLATION	Page 4
C	SAFETY INSTRUCTIONS	Page 5
D	OPERATION	Page 6
E	CLEANING & MAINTENANCE	Page 8
F	TROUBLESHOOTING.....	Page 9
G	SPARE PART LIST- EXPLODING DRAWINGS	Page 10
H	ELECTRIC CIRCUIT SCHEMA.....	Page 15

A GENERAL INFORMATION

Before installing the appliance, read operation and maintenance instructions carefully. Wrong installation and part changing may damage the product or may cause injury on people. These are not in our company's responsibility to damage the appliance intentionally, negligence, detriments because of disobeying instructions and regulations, wrong connections. Unauthorized intervention to appliance invalidates the warranty.

1. This instruction manual should be kept in a safe place for future reference.
2. **Installation should be made in accordance with ordinances and security rules of that country by a qualified service personnel.**
3. This appliance has to be used by trained person.
4. Please turn off the appliance immediately in the event of malfunction or failure. The appliance should be repaired only by authorized service personnel. Please demand original spare part.

CUTTER MIXER

A1 PRODUCT DESCRIPTION

*Professional Cutter Mixer, that provides high efficiency has been designed to be used in industrial kitchens.

Product Code	Dimensions (mm)	Weight (kg)	Packaging Dimensions (mm)
SD.07	640x615x1045	60	390x660x1130
SD.09	718X684X1245	70	750X750X1285
SD.15	380x623x512	46	410x660x650

A2 TECHNICAL INFORMATION

Product Code	Capacity (lt)	Tank Dimensions (mm)	Power (Kw)	Operating Voltage (V)	Cable (mm ²)	Fuse (A)
SD.07	20	293x293	1,5-2,5	380	5x1,5	32
SD.09	50	400X400	3,5-5,5	380	5X1,5	32
SD.15	15	290x220	0,60-0,90	380	5x1,5	32

A3 TRANSPORTATION

*This appliance can be moved by hand from area to area. Do not crash and drop the appliance while transporting.

A4 UNPACKING

*Please unpack the package according to the security codes and ordinances of current country and get rid from the pack. Parts which contacts with food are produced by stainless steel. All plastic parts are marked by material's symbol.

*Please check that all the parts of appliance had come completely and if they are damaged or not during the shipping.

B INSTALLATION

*Please place the product to straight and sturdy ground, please take necessary steps against possibility of overturn.

*Technician who will serve for installation and service for the appliance must be professional on this subject and must have installation and service licenses by the company.

*Connection to Electric Power Supply must be done by authorized person .

*Please be sure that the voltage connected to appliance must be equal with the voltage which is on appliance's label.












This appliance must be connected to an earthed outlet in accordance with safety rules and standards.

*Appliance's earthing must be connected to earthing line on panel which is nearest to electric installation.

*Connection to the main fuse and leak current fuse must be done in accordance with the current regulations.

CUTTER MIXER

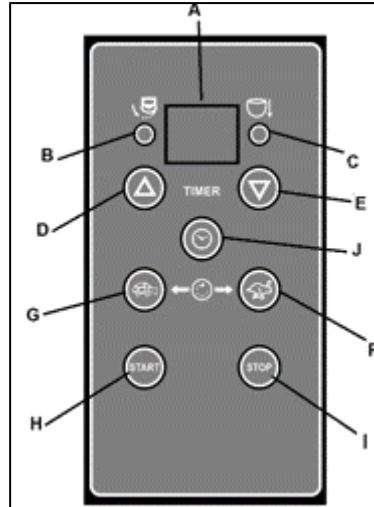
C SAFETY INSTRUCTIONS

-  *Do not use the appliance in insufficient lighted place.
-  *Do not touch the moving attachments while the appliance operates.
-  *Do not install the appliance in the presence of flammable or explosive materials.
-  *Do not operate the appliance when the machine is empty.
-  *Do not load so less or more than appliance's capacity.
-  *Do not attempt to use the appliance without suitable protective equipments.
-  *Because of any reason if there is a fire or flame flare where the appliance is used, turn off all gas valves and electric contactor switch quickly and use fire extinguisher. Never use water to extinguish the fire.
-  *All the damages because of not having earthing connection will not be on warranty.
-  *Do not put your hands into the cutting tank while the appliance is operating.

D OPERATION

*Control Panel;

- A : Digital Indicator
- B : Lid is opened error
- C : Bowl error
- D-E : Speed setting
- F-G : Timer setting
- H: Start switch
- I : Stop switch
- J : Stop time



SD.07-SD.09

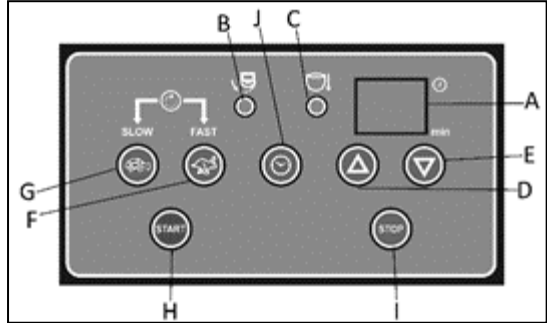
*Operating;

- Before operating the appliance, clean the blade and tank with wet cloth and dry.
- Provide the ducts on cutting blades to pass on to the shaft.
- Open the appliance's upper lid and fill the materials into the vegetable tank.
- Press START button to operate the appliance.
- If the appliance operates with 380 V, while plugging during first operation, pay attention to be operated on the direction of arrow.
- If it is wanted to add material without opening the lid while the appliance is working, solid materials can be added through lid space after dividing into small pieces.
- For adjusting the speed of the mixer, press (G) for low and press (F) for high.
- Press "timer" button to set desired time using the buttons up/down. When time expires, the appliance will stop.
- Turn off the timer to operate the appliance pressing stop button.
- In order to take off the materials, first open the lid and unsettle the cutting blade. Careen the bowl by turning the overturning handle to down.
- After taking off the materials, provide the bowl to be in vertical position by lifting bowl handle up.
- After the operation completed, unplug the power supply.

CUTTER MIXER

*Control Panel;

- A : Digital Indicator
- B : Lid is opened error
- C : Bowl error
- D-E : Speed setting
- F-G : Timer setting
- H: Start switch
- I : Stop switch
- J : Stop time



SD.15

*Operating;

- Before operating the appliance, clean the blade and tank with wet cloth and dry.
- Provide the ducts on cutting blades to pass on to the shaft.
- Open the appliance's upper lid and fill the materials into the vegetable tank.
- Press START button to operate the appliance.
- If the appliance operates with 380 V, while plugging during first operation, pay attention to be operated on the direction of arrow.
- If it is wanted to add material without opening the lid while the appliance is working, solid materials can be added through lid space after dividing into small pieces.
- For adjusting the speed of the mixer, press (G) for low and press (F) for high.
- Press "timer" button to set desired time using the buttons up/down. When time expires, the appliance will stop.
- Turn off the timer to operate the appliance pressing stop button.
- In order to take off the materials, first open the lid and unsettle the cutting blade. Careen the bowl by turning the overturning handle to down.
- After taking off the materials, provide the bowl to be in vertical position by lifting bowl handle up.
- After the operation completed, unplug the power supply.
-

E CLEANING & MAINTENANCE

➤ **CLEANING AND MAINTENANCE AFTER EVERY USE**

- Clean outer surface of appliance,tank and cutting blade with hot water and then dry.
- Always turn off the appliance and disconnect from the power supply before cleaning.
- Do not use abrasive cleaning chemicals as these can leave harmful residues.
- Do not clean the appliance by spraying water directly,otherwise electric motor may get damaged.

➤ **PERIODIC CLEANING AND MAINTENANCE**

- Maintenance should be done by qualified person.
- Get the periodic maintenance of the appliance once in every 15 days.
- The Cutter Mixer requires low maintenance (Motor and ball bearings are lubricated).
- Maintenance of appliance's contactor should be done by compressed air according to frequency of use.
- Maintenance of cutting blade ;
 - Grind the blade with aqueous grinding wheels without disrupting blade angle.

CUTTER MIXER

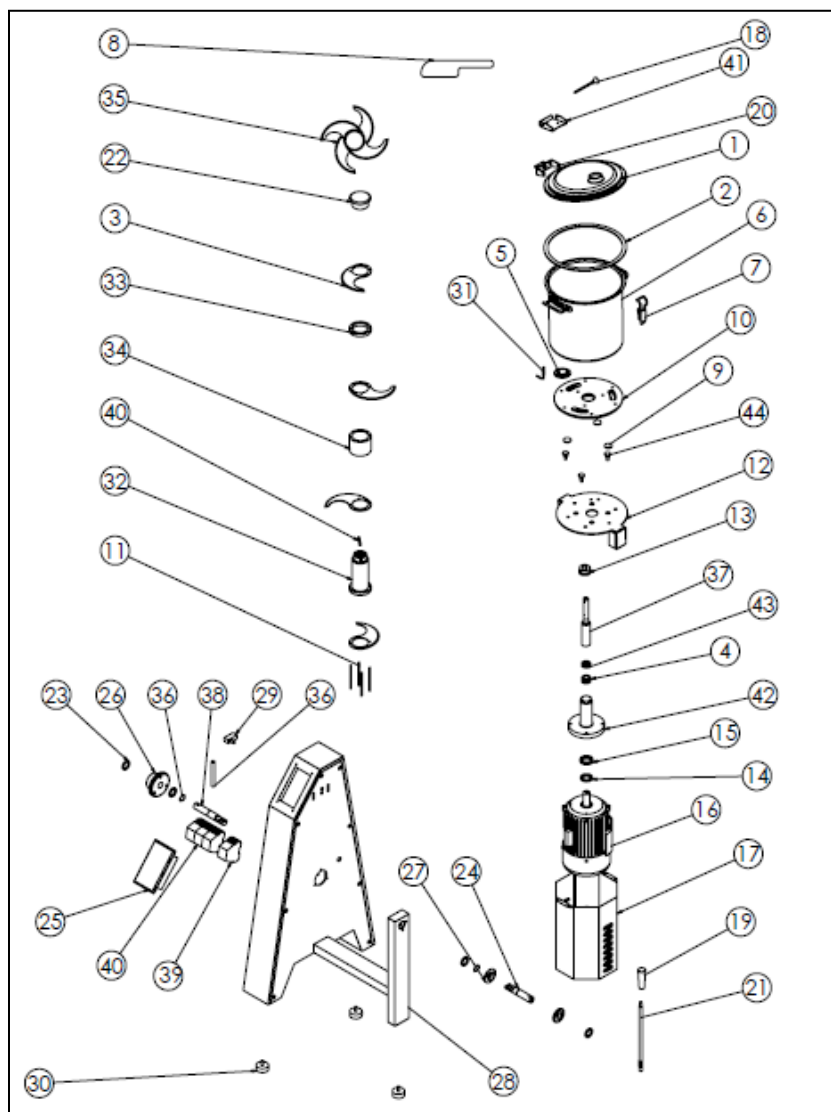
F TROUBLESHOOTING

THE APPLIANCE DOESN'T OPERATE	<ol style="list-style-type: none">1. Check if the appliance is plugged in.2. Check the electrical connections and voltage.3. Check the bowl's lid.
THE APPLIANCE IS NOISY	<ol style="list-style-type: none">1. Check the cutting blades.2. Check that if there is material accumulated in the tank.3. If the motor is noisy, stop it and call authorized service.
THE APPLIANCE STOPPED	<ol style="list-style-type: none">1. The appliance can stop due to low voltage. In this situation check the voltage2. If the appliance is overloaded, turn off the appliance and allow to cool down by taking off some materials from bowl
ERROR MESSAGE(SD.07-SD.09)	E3: Bowl error
ERROR MESSAGE(SD.15)	E1: Motor error E3: Bowl error
<ul style="list-style-type: none">• If Cutter Mixing is not done at suitable quality• If any function of security doesn't work<ul style="list-style-type: none">➤ Do not use the appliance.	

***If these problems are still going on, contact with our authorized service.**

CUTTER MIXER

G SPARE PART LIST- EXPLODING DRAWINGS



CUTTER MIXER

G SPARE PART LIST- EXPLODING DRAWINGS

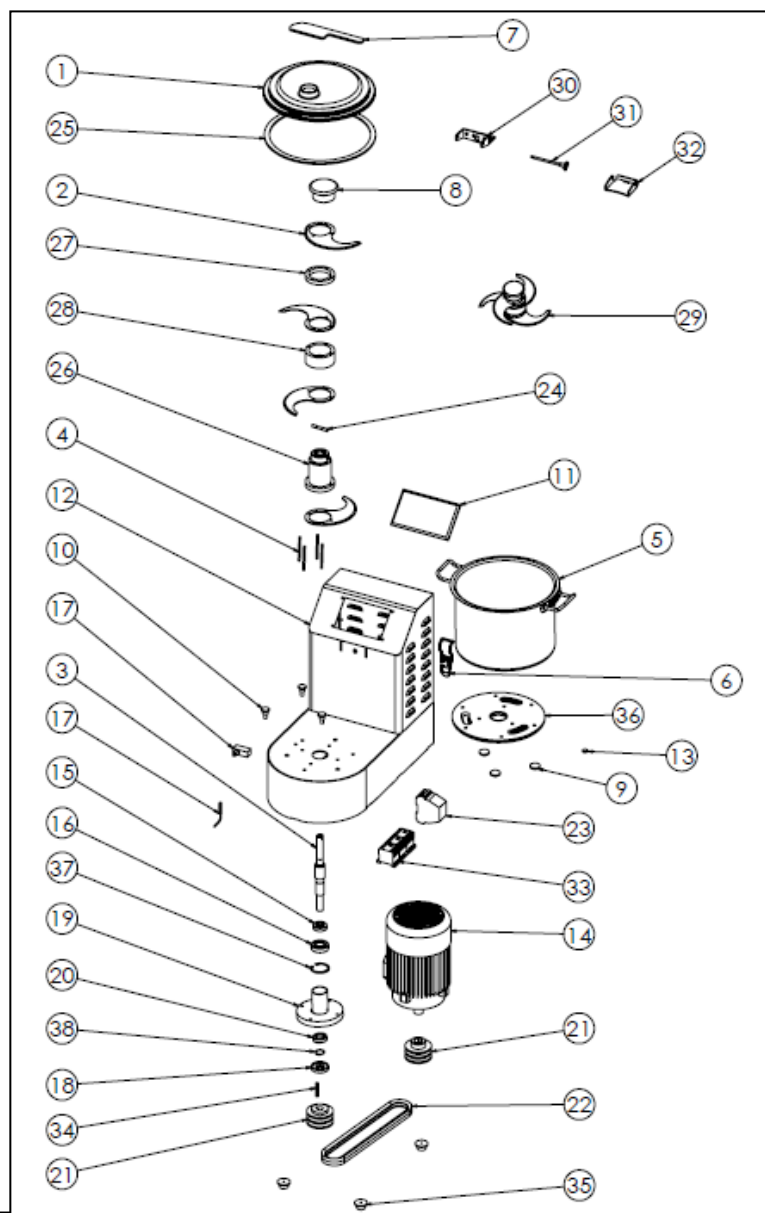
PRODUCT CODE:SD.07		
NO	PRODUCT NAME	P.CODE
1	LID	Y.SD.07.001
2	BOWL RUBBER	Y.SD.07.002
3	BLADE	Y.SD.07.003
4	BALL BEARING (4904)	Y.SD.07.004
5	MAGNET	Y.SD.07.005
6	BOWL	Y.SD.07.006
7	LOCK LATCH	Y.SD.07.007
8	SCRAPER PLASTIC	Y.SD.07.008
9	BOWL STOPPER PLASTIC	Y.SD.07.009
10	BOWL BOTTOM PLASTIC	Y.SD.07.010
11	BLADE FIXATION	Y.SD.07.011
12	BOWL PLATFORM	Y.SD.07.012
13	SHAFT PLASTIC	Y.SD.07.013
14	SEAL (35*52*10)	Y.SD.07.014
15	SEAL (30*47*7)	Y.SD.07.015
16	MOTOR	Y.SD.07.016
17	MOTOR SAFETY	Y.SD.07.017
18	HINGE PIN	Y.SD.07.018
19	TURNOVER HANDLE PLASTIC	Y.SD.07.019
20	HINGE	Y.SD.07.020
21	TURNOVER HANDLE	Y.SD.07.021
22	BLADE HANDHOLD	Y.SD.07.022
23	FLAKE	Y.SD.07.023
24	SHORT SHAFT	Y.SD.07.024
25	PANEL	Y.SD.07.025
26	BIG SHAFT BEARING	Y.SD.07.026
27	SMALL SHAFT BEARING	Y.SD.07.027
28	BASE FRAME	Y.SD.07.028
29	SWITCH	Y.SD.07.029
30	FEET	Y.SD.07.030
31	SENSOR	Y.SD.07.031
32	BLADE BODY ALUMINIUM	Y.SD.07.032
33	THIN BLADE BODY	Y.SD.07.033
34	THICK BLADE BODY	Y.SD.07.034
35	BLADE GROUP	Y.SD.07.035
36	SEGMAN (471-25)	Y.SD.07.036
37	MOTOR SHAFT	Y.SD.07.037
38	LONG SHAFT	Y.SD.07.038
39	THERMIC	Y.SD.07.039
40	CONTACTOR DILEM 09-30-10	Y.SD.07.040
41	LID HINGE	Y.SD.07.041
42	BEARING BLOCK BOTTOM CASTING	Y.SD.07.042
43	SEAL (20*37*10)	Y.SD.07.043
44	BOWL BOTTOM PIN	Y.SD.07.044

G SPARE PART LIST- EXPLODING DRAWINGS

PRODUCT CODE:SD.09		
NO	PRODUCT NAME	P.CODE
1	LID	Y.SD.09.001
2	BOWL RUBBER	Y.SD.09.002
3	BLADE	Y.SD.09.003
4	BALL BEARING (6806)	Y.SD.09.004
5	MAGNET	Y.SD.09.005
6	BOWL	Y.SD.09.006
7	LOCK LATCH	Y.SD.09.007
8	SCRAPER PLASTIC	Y.SD.09.008
9	BOWL STOPPER PLASTIC	Y.SD.09.009
10	BOWL BOTTOM PLASTIC	Y.SD.09.010
11	BLADE FIXATION	Y.SD.09.011
12	BOWL PLATFORM	Y.SD.09.012
13	SHAFT PLASTIC	Y.SD.09.013
14	SEAL (45*62*10)	Y.SD.09.014
15	SEAL (40*55*10)	Y.SD.09.015
16	MOTOR	Y.SD.09.016
17	MOTOR SAFETY	Y.SD.09.017
18	HINGE PIN	Y.SD.09.018
19	TURNOVER HANDLE PLASTIC	Y.SD.09.019
20	HINGE	Y.SD.09.020
21	TURNOVER HANDLE	Y.SD.09.021
22	BLADE HANDHOLD	Y.SD.09.022
23	FLAKE	Y.SD.09.023
24	SHORT SHAFT	Y.SD.09.024
25	PANEL	Y.SD.09.025
26	BIG SHAFT BEARING	Y.SD.09.026
27	SMALL SHAFT BEARING	Y.SD.09.027
28	BASE FRAME	Y.SD.09.028
29	SWITCH	Y.SD.09.029
30	FEET	Y.SD.09.030
31	SENSOR	Y.SD.09.031
32	BLADE BODY ALUMINIUM	Y.SD.09.032
33	THIN BLADE BODY	Y.SD.09.033
34	THICK BLADE BODY	Y.SD.09.034
35	BLADE GROUP	Y.SD.09.035
36	SEGMAN (471-40)	Y.SD.09.036
37	MOTOR SHAFT	Y.SD.09.037
38	LONG SHAFT	Y.SD.09.038
39	THERMIC	Y.SD.09.039
40	CONTACTOR DILEM 09-30-10	Y.SD.09.040
41	LID HINGE	Y.SD.09.041
42	BEARING BLOCK BOTTOM CASTING	Y.SD.09.042
43	SEAL (30*42*7)	Y.SD.09.043
44	BOWL BOTTOM PIN	Y.SD.09.044

CUTTER MIXER

G SPARE PART LIST- EXPLODING DRAWINGS

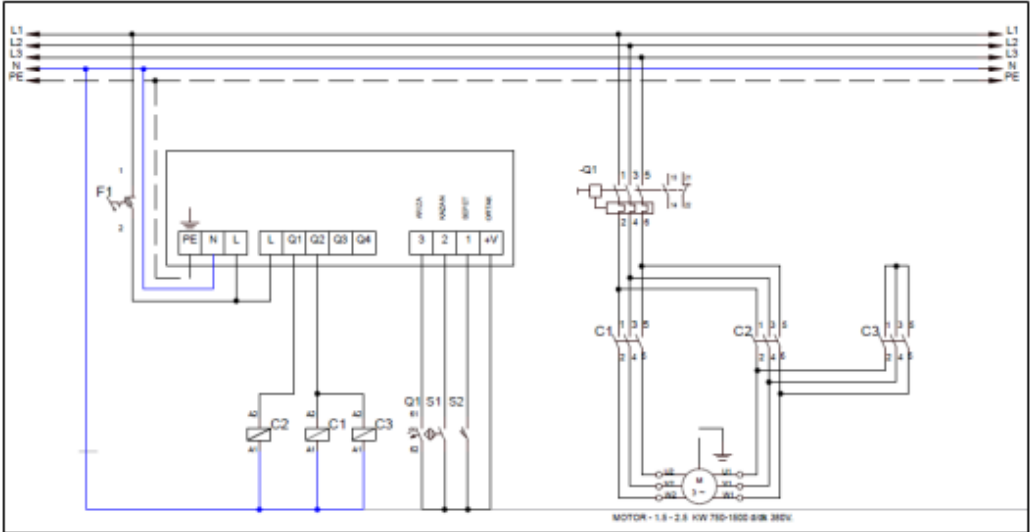


G SPARE PART LIST- EXPLODING DRAWINGS

PRODUCT CODE:SD.15		
NO	PRODUCT NAME	P.CODE
1	LID	Y.SD.15.001
2	BLADE	Y.SD.15.002
3	BEARING BLOCK SHAFT	Y.SD.15.003
4	BLADE FIXATION	Y.SD.15.004
5	BOWL	Y.SD.15.005
6	LOCK LATCH	Y.SD.15.006
7	SCRAPER PLASTIC	Y.SD.15.007
8	BLADE HANDHOLD	Y.SD.15.008
9	BOWL STOPPER PLASTIC	Y.SD.15.009
10	BOWL BOTTOM PIN	Y.SD.15.010
11	PANEL	Y.SD.15.011
12	BASE FRAME	Y.SD.15.012
13	MAGNET	Y.SD.15.013
14	MOTOR	Y.SD.15.014
15	SEAL (20*42*10)	Y.SD.15.015
16	BALL BEARIBG (6004)	Y.SD.15.016
17	SENSÖR	Y.SD.15.017
18	SEAL (25*52*10)	Y.SD.15.018
19	BEARING	Y.SD.15.019
20	BALL BEARING (6205)	Y.SD.15.020
21	BEARING BLOCK PULLEY	Y.SD.15.021
22	BELT (13X850)	Y.SD.15.022
23	THERMIC	Y.SD.15.023
24	PIN	Y.SD.15.024
25	PAN RUBBER	Y.SD.15.025
26	ALUMINIUM BLADE BODY	Y.SD.15.026
27	THIN ALUMINIUM BLADE	Y.SD.15.027
28	THICK ALUMINIUM BLADE	Y.SD.15.028
29	BLADE GROUP	Y.SD.15.029
30	BODY HINGE SHEET METAL	Y.SD.15.030
31	HINGE SHAFT	Y.SD.15.031
32	LID HINGE SHEET METAL	Y.SD.15.032
33	CONTACTOR DILEM10	Y.SD.15.033
34	WEDGE	Y.SD.15.034
35	FEET	Y.SD.15.035
36	BOWL BOTTOM PLASTIC	Y.SD.15.036
37	SEGMAN (472-52)	Y.SD.15.037
38	SEGMAN (471-25)	Y.SD.15.038

CUTTER MIXER

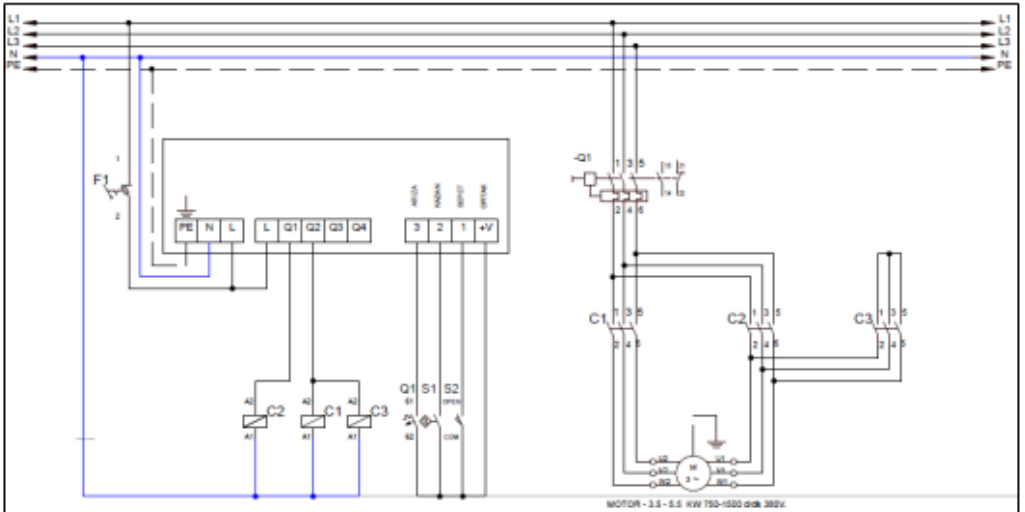
H ELECTRIC CIRCUIT SCHEMA



PRODUCT CODE	POWER (KW)	RPM	VOLTAGE
SD.07	1,5/2,5	750/1500	380

Q1	C2	C3-C4	M	S1	S2	F1
Motor Safety Relay	2.Speed Contactor	1.Speed Contactor	Motor	Bowl Magnetic Sensor	Basket Magnetic Switch	Control Panel Fuse 1X4A

H ELECTRIC CIRCUIT SCHEMA

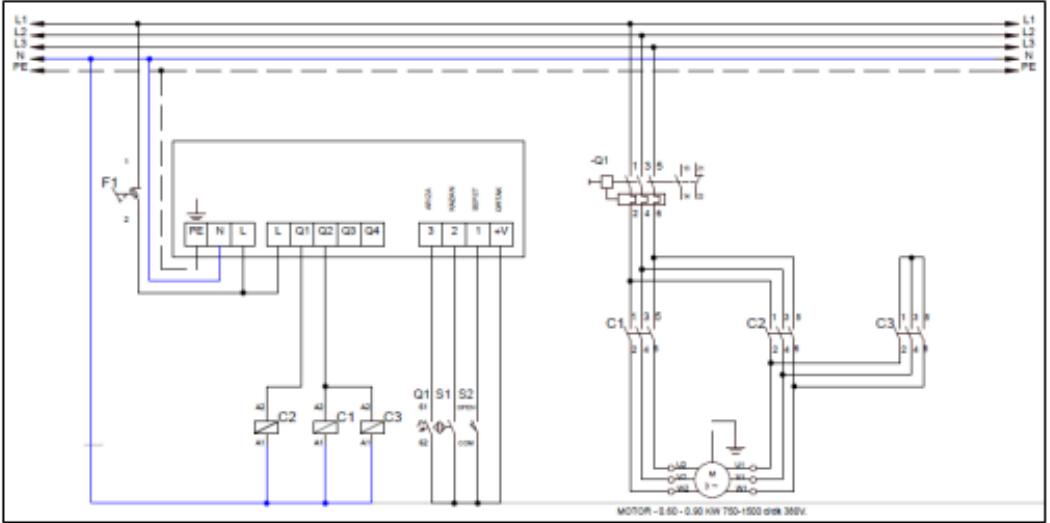


PRODUCT CODE	POWER (KW)	RPM	VOLTAGE
SD.09	3,5/5,5	750/1500	380

Q1	C2	C3-C4	M	S1	S2	F1
Motor Safety Relay	2.Speed Contactor	1.Speed Contactor	Motor	Basket Magnetic Sensor	Bowl Magnetic Switch	Control Panel Fuse 1X4A

CUTTER MIXER

H ELECTRIC CIRCUIT SCHEMA



PRODUCT CODE	POWER (KW)	RPM	VOLTAGE
SD.15	0,60/0,90	750/1500	380

Q1	C2	C3-C4	M	S1	S2	F1
Motor Safety Relay	1.Speed Contactor	2.Speed Contactor	Motor	Bowl Magnetic Sensor	Basket Magnetic Swich	Control Panel Fuse 1X4A