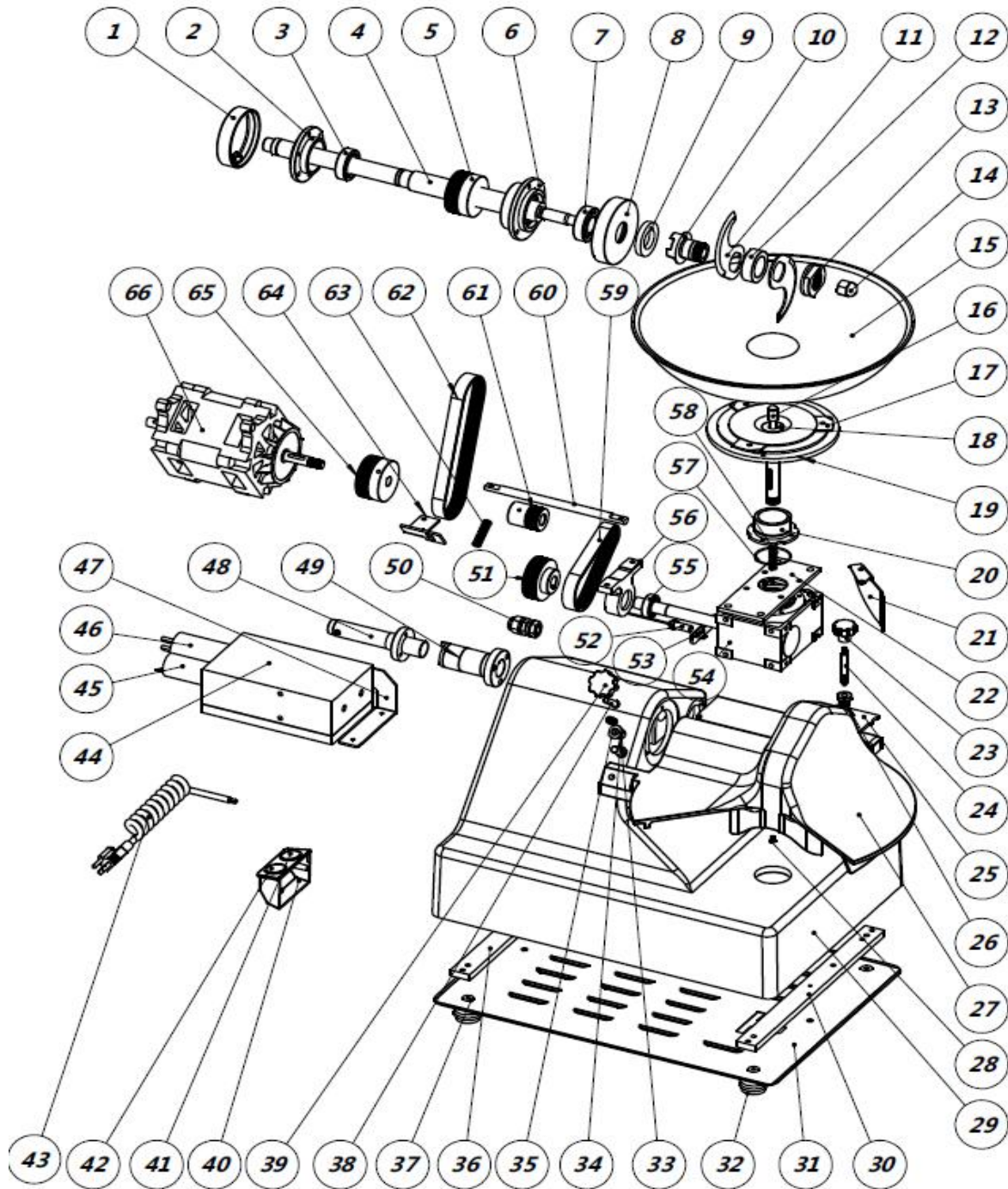


EXPLODED DRAWING FOR HCH8N



No.	Material code	Name	
1	2.HLQ80103-0001511801	cover for back seat	
2	2.HLQ80102-0001511801	back seat for bearing	
3	4. 01. 6204GBT294161	bearing 6204	
4	2.HLQ80301-0000510701	blade axis	
5	2.HLQ80506-0000511501	belt pulley for knife shaft	
6	2.HLQ80104-0001511801	front seat for bearing	
7	4. 01. 6205GBT294161	bearing 6205	
8	2.HLQ80105-0001511801	cover for front seat	
9	4. 01. FB3052821	oil sealing	
10	2.HLQ80302-0000510701	base for knife	

11	2. HLQ80305-0000511301	knife	
12	2. HLQ80303-0000510701	knife cover	
13	2. HLQ80304-0000510701	screw nut for fasten	
14	4. 01. M14GBT923037	Stainless steel cap nut	
15	2. HLQ80401-0000510901	holloware	
16	2. HLQ80407-0000510701	Switch feeler lever	
17	2. HLQ80403-0000510701	Pressing plate	
18	2. HLQ80405-0000510701	sleeve	
19	2. HLQ80402-0001511801	support base for holoware	
20	2. HLQ80109-0001511801	sleeve	
21	2. HLQ80211-0000510701	scraper	
22	2. HLQ80501-0004511601	Reducer mounting plate	
23	3. HBS2500095070100	knob	
24	2. HLQ80208-0000510701	handle for locking	
25	2. HLQ80204-0000510702	scraper	
26	2. HLQ80207-0000510701	sheath	
27	2. HLQ80201-0001511801	lid	
28	2. HBS250-0592700001	support block	
29	2. HLQ80101-0001511801	table	
30	2. HLQ80107-0004511601	board 1 for feet	
31	2. HLQ80110-0000511001	bottom	
32	3. HBS25010001010102	rubber gasket	
33	1. 03. 00010001	magnetic sensor	
34	2. HLQ80210-0000510701	sleeve for locking cover	
35	4. 02. 00000049	spring for positioning axis	
36	2. HLQ80108-0004511601	board 2 for feet	
37	2. HBS30010001110100	Al feet	
38	2. HLC300-061100410	Positioning axis	
39	3. HBS2500095070100	Octagon knob	
40	3. HLQ350A080002010401	switch box	
41	1. 05. 013022QN19A2	switch off	
42	1. 05. 013022LAS1A	switch on	
43	1. 01. 01. 19231101	wire and plug	
44	3. 00004	electric box	
45		capacity 2 for motor	
46		capacity 1 for motor	
47	2. HLQ8060201405101601	bracket for electric box	
48	2. HLQ80202-0000510701	shaft for cover	
49	2. HLQ80106-0000510701	locking sleeve	

50	1.03.00040011	connector	
51	2.HLQ80509-0000511501	belt pulley for reducer	
52	1.03.00010001	magnetic switch	
53	2.HLQ80603-0000511001	bracket for switch	
54	1.04.JSJHLQ80001	reducer	
55	4.01.6003GBT294166	bearing 6003	
56	3.HLQ80508010009000	Reducer shaft auxiliary support	
57	3.0000409	O ring	
58	2.HLQ80406-0000510101	spring	
59	4.01.25GBT1658810350081	belt	
60	2.HLQ80502-0004511501	Motor mounting shaft	
61	2.HLQ80505-0000511501	belt pulley 2 for motor	
62	4.01.15GBT1658810508081	belt	
63	2.HLQ80606-0000510101	Spring	
64	2.HLQ80605-0004511601	Motor adjustment bracket	
65	2.HLQ80505-0000511501	belt pulley for motor	
66	1.04.HLQ80100510	motor	