

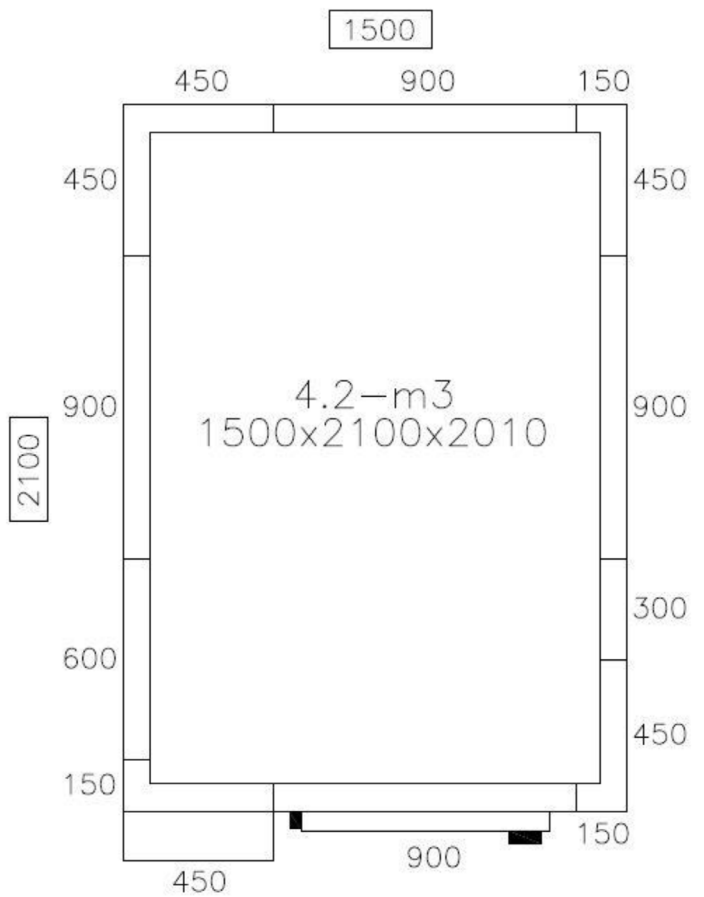
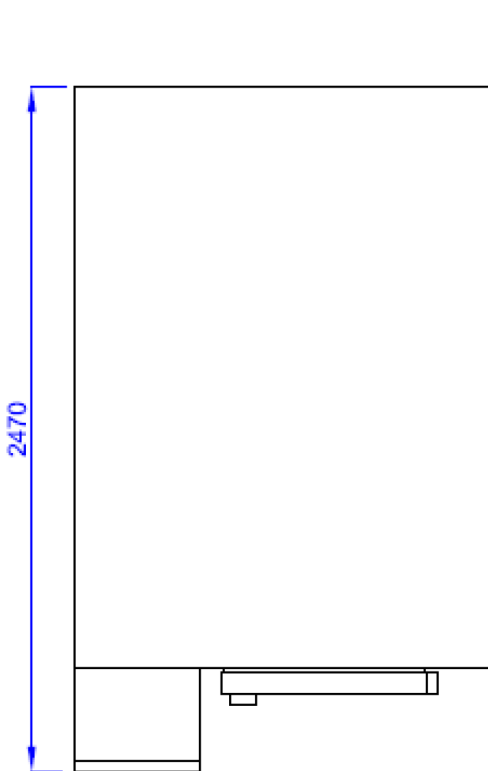
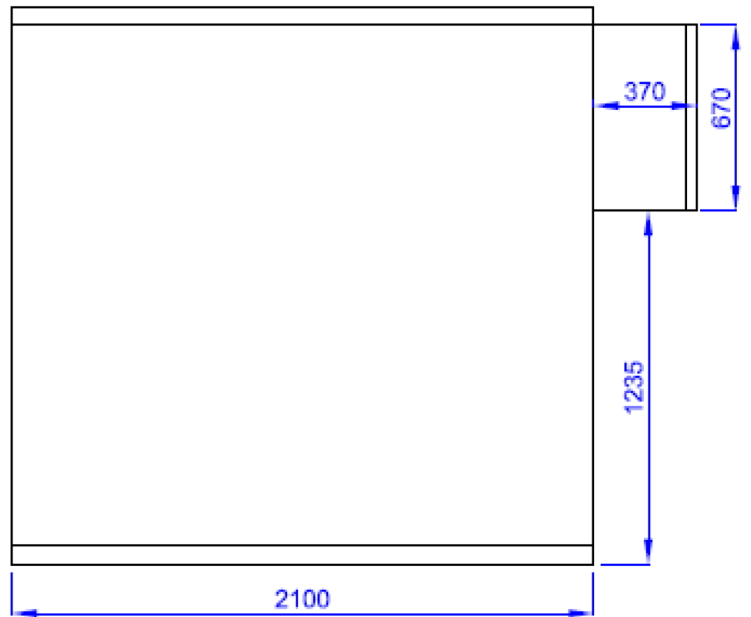
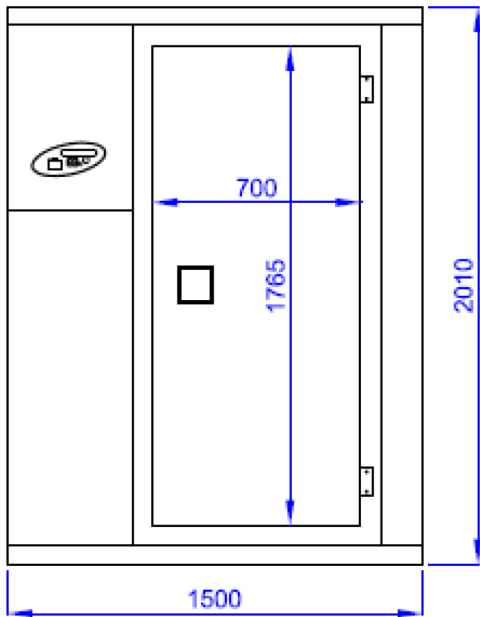


**ggmgastro**  
INTERNATIONAL

**TKF1521 (1500 x 2100 x 2010 mm)**



# Abmessungen / dimensions

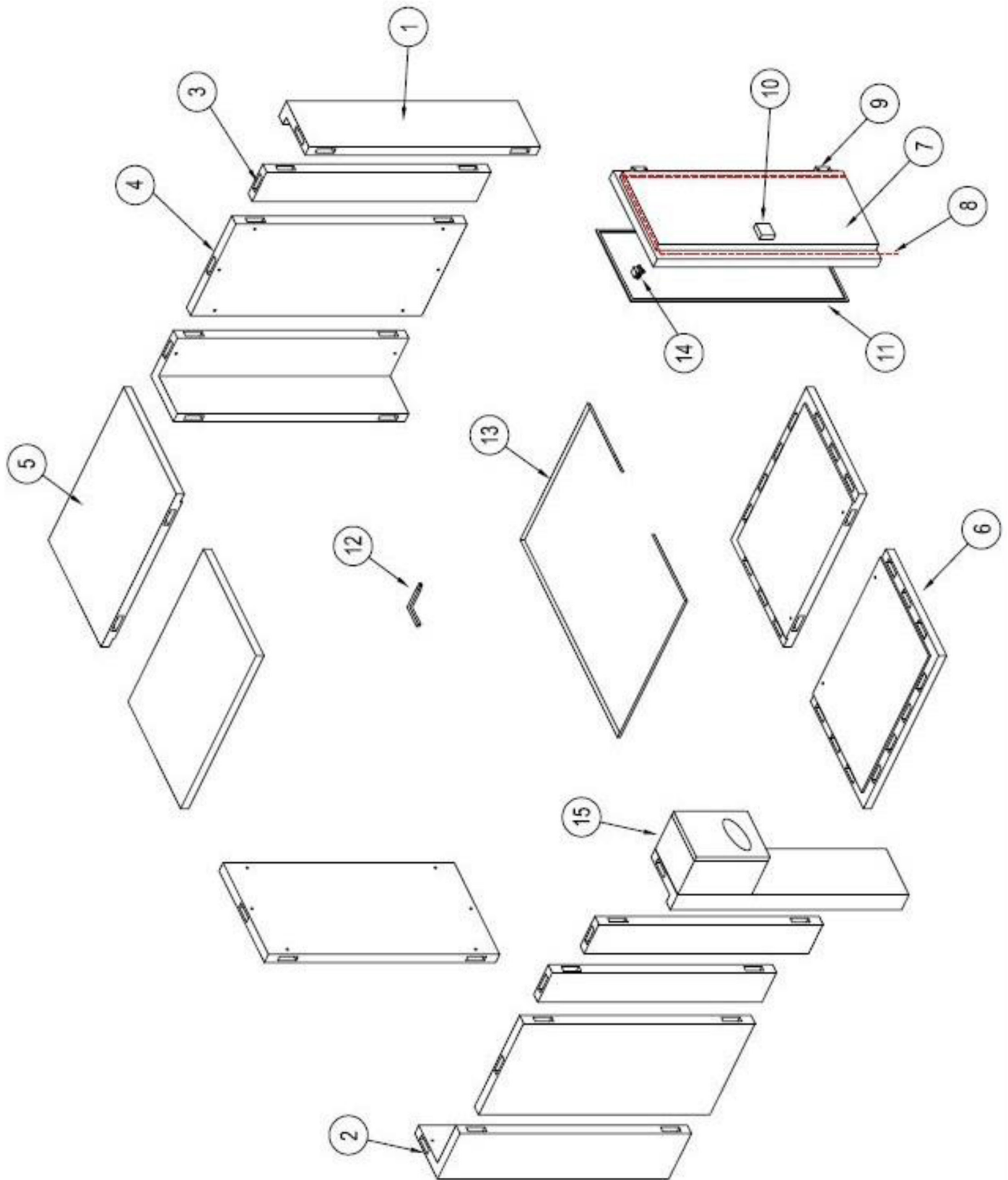


# Eigenschaften / characteristics

120 mm Paneeldicke / 120 mm panel thickness  
42 kg/m<sup>3</sup> Polyurethan-Isolation / 42 kg/m<sup>3</sup> polyurethane insulation  
PVC-Beschichtung mit verzinktem, weißem Stahlblech /  
PVC coated galvanized steel panels consist of white sheet  
Drei Innenlichter / three headlights  
Plattenmodule leicht montierbar und wieder trennbar /  
modular panels - easily assembled and separated  
Beidseitig abschließbar / two-side locking system  
Installation ohne Bolzen und Silikon / installation without any bolt or silicone  
1 mm dicke geprägte Bodenplatten aus Edelstahl /  
1 mm thickness embossed stainless steel special floor panels  
Tür durch Dichtung perfekt abschließbar /  
door with gasket and heater easy, perfect door closure  
Sicherheitsschloss innerhalb der Zelle / security door handle inside the room  
43 °C konstante Betriebstemperatur / 43 °C ambient working temperature  
Ordnungsgemäße Raumgröße / proper room size

Außenmaße / outside dimensions:	B 1500 x T 2100 x H 2010 mm
Innenmaße / inside dimensions:	B 1260 x T 1860 x H 1770 mm
Verpackungsmaße / package dimensions:	B 1950 x T 1250 x H 1300 mm
Innenvolumen / inside volume:	4,2 m <sup>3</sup>
Bruttogewicht / gross weight:	400 kg
Nettogewicht / net weight:	380 kg
Beschichtung / coating:	0,50 mm PVC-Beschichtung mit verzinktem, weißem Stahlblech / 0,50 mm PVC coated galvanized white sheet
Isolationsmaterial / insulation material:	Polyurethan / polyurethane
Dicke Isolationsmaterial / Insulation material thickness:	120 mm
Zertifikate / certifications:	TS 2225 EN 60335-2-4

# Explosionszeichnung / exploded view



# Ersatzteile / spare parts

NO	STOK NO	MATERIAL NAME	QTY
1	01A02KP4515	450x150 CORNER PANEL	3
2	01A02KP4545	450x450 CORNER PANEL	1
3	01A02PA300	300mm PANEL	3
4	01A02PA900	900mm PANEL	3
5	01A02TB15105	1500x1050 FLOOR PANEL	2
6	01A02TV15105	1500x1050 CEILING PANEL	2
7	01A02KA20190	DOOR	1
8	B00REZ112	DOOR RESISTANCE	1
9	B02ME104	DOOR HINGE	2
10	B00Ki107	DOOR LOCK	1
11	A00CO128	DOOR GASKET	1
12	B00Ki108	SWITCH ASSEMBLY	1
13	B00PR125	CLEANING PVC PROFILE (6mt)	1
14	B00DU103	DOOR SWITCH	1
15	01A02SGL3050	SGL3050--COOLING UNITS	1

# Aufbau / installation

