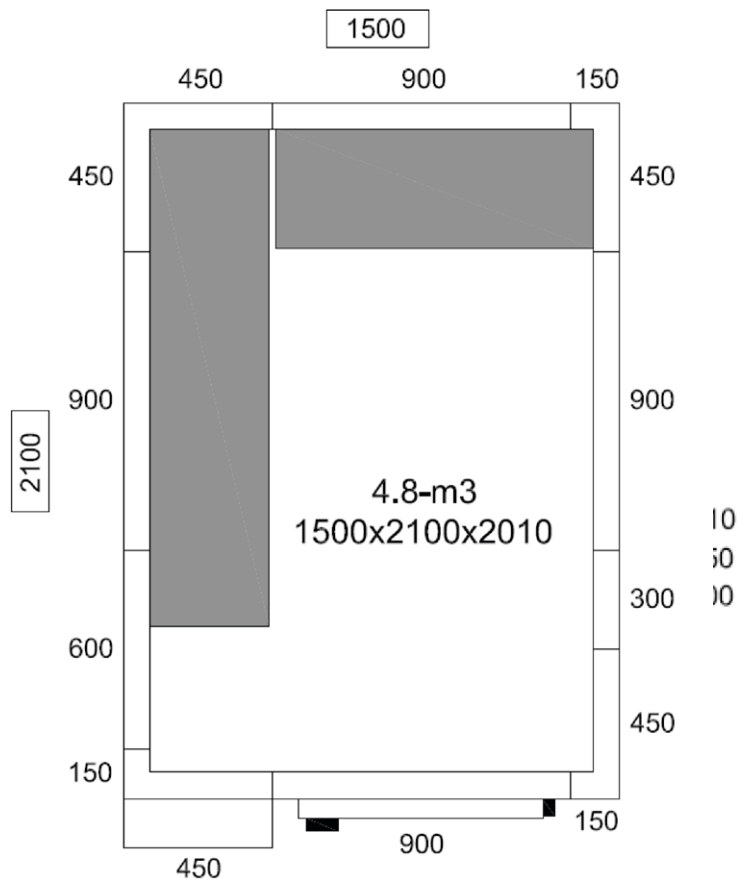
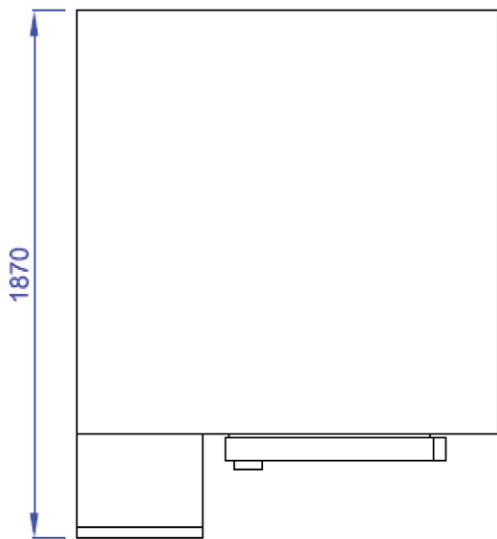
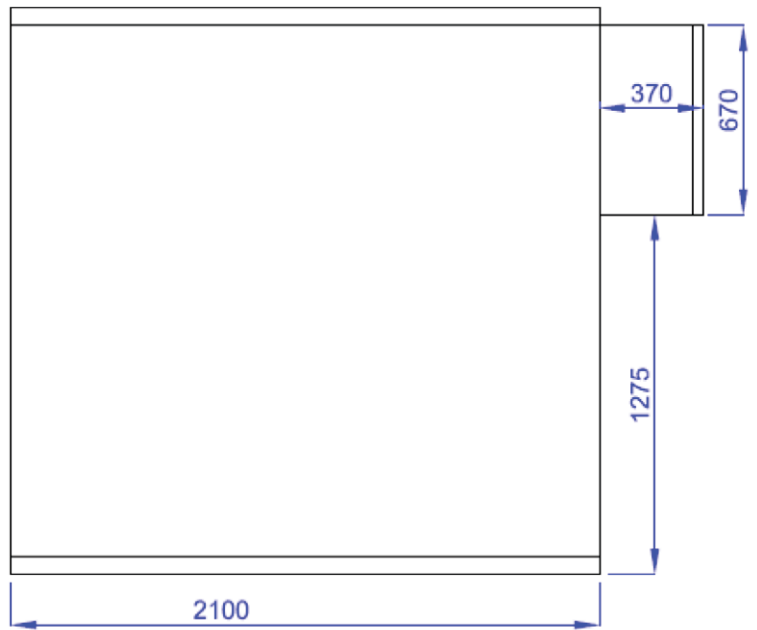
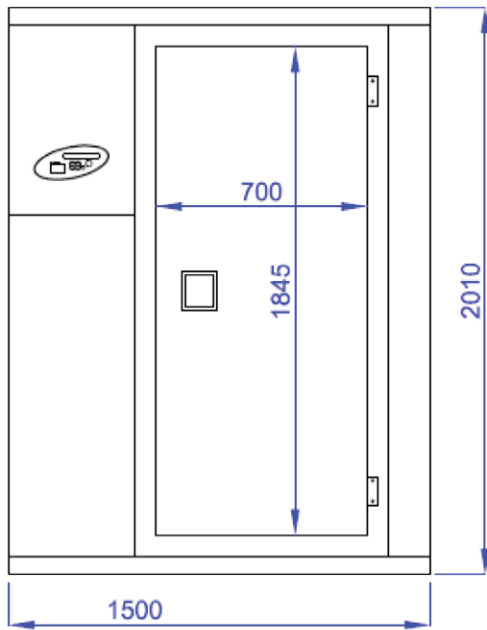


# KF1521E (1500 x 2100 x 2010 mm)



# Abmessungen / dimensions



# Eigenschaften / characteristics

**80 mm Paneeldicke /**

80 mm panel thickness

**42 kg/m<sup>3</sup> Polyurethan-Isolation /**

42 kg/m<sup>3</sup> polyurethane insulation

**PVC-Beschichtung mit verzinktem Stahlblech /**

PVC coated galvanized steel panels consist of white sheet

**Drei Innenlichter /**

three headlights

**Plattenmodule leicht montierbar und wieder trennbar /**

modular panels - easily assembled and separated

**Beidseitig abschließbar /**

two-side locking system

**Installation ohne Bolzen und Silikon /**

installation without any bolt or silicone

**1 mm dicke geprägte Bodenplatten aus Edelstahl /**

1 mm thickness embossed stainless steel special floor panels

**Tür durch Dichtung perfekt abschließbar /**

door with gasket and heater easy, perfect door closure

**Sicherheitsschloss innerhalb der Zelle /**

security door handle inside the room

**Für HACCP Reinigung geeignet, PVC Profil bietet eine hygienische Umgebung /**

HACCP appropriate cleaning PVC profiles provide a hygienic environment.

**43 °C konstante Betriebstemperatur /**

43 °C ambient working temperature

**Passende Kühlaggregate für die Kapazität des Raumes /**

Proper cooling units with the capacity of the room

**Bietet Platz für verschiedene Kunststoffregal-Kombinationen /**

plastic shelf options

**Außenmaße /** outside dimensions:

B 1500 x T 2100 x H 2010 mm

**Innenmaße /** inside dimensions:

B 1340 x T 1940 x H 1850 mm

**Verpackungsmaße /** package dimensions:

B 1950 x T 1250 x H 1250 mm

**Innenvolumen /** inside volume:

4,8 m<sup>3</sup>

**Bruttogewicht /** gross weight:

390 kg

**Nettogewicht /** net weight:

365 kg

**Außenverkleidung /** outside Body:

0,6 mm - 304 SB Edelstahl / stainless steel

**Isolationsmaterial /** insulation material:

Polyurethan / polyurethane

**Dicke Isolationsmaterial /**

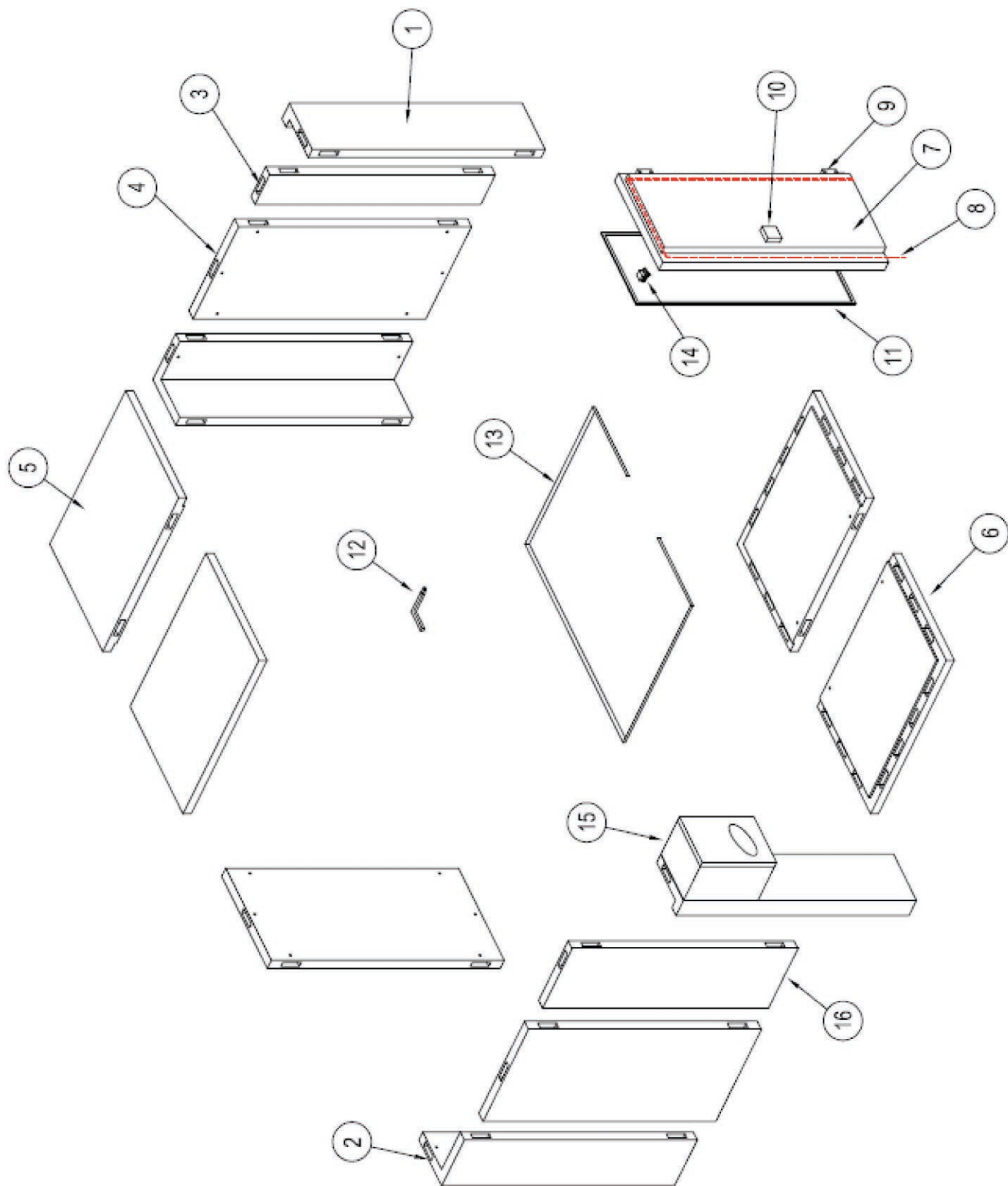
Insulation material thickness:

80 mm

**Zertifikate /** certifications:

TS 2225 EN 60335-2-4

# Explosionszeichnung / exploded view





# Ersatzteile / spare parts

NO	STOK NO	MATERIAL NAME	ADET QTY
1	01A01KP4515-SS	450x150 CORNER PANEL	3
2	01A01KP4545-SS	450x450 CORNER PANEL	1
3	01A01PA300-SS	300mm PANEL	1
4	01A01PA900-SS	900mm PANEL	3
5	01A01TB15105-SS	1500x1050 FLOOR PANEL	2
6	01A01TV15105-SS	1500x1050 CEILING PANEL	2
7	01A01KA20190-SS	DOOR	1
8	B00REZ112	DOOR RESISTANCE	1
9	B02ME104	DOOR HINGE	2
10	B00Kİ107	DOOR LOCK	1
11	A00CO128	DOOR GASKET	1
12	B00Kİ108	SWITCH ASSEMBLY	1
13	B00PR125	CLEANING PVC PROFILE (6mt)	1
14	B00DU103	DOOR SWITCH	1
15	01A01SGN3050	SGN3050--COOLING UNITS	1

# Aufbau / installation

