

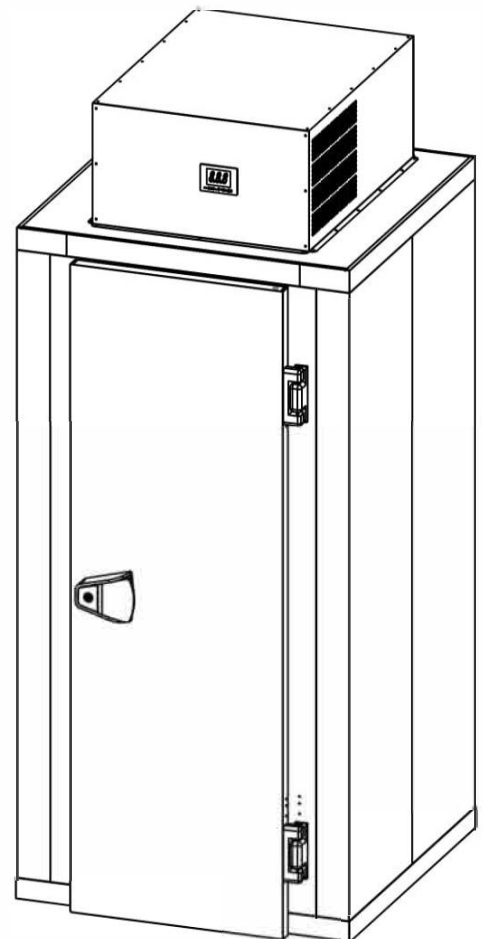
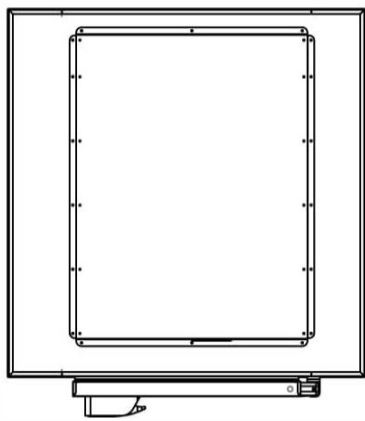
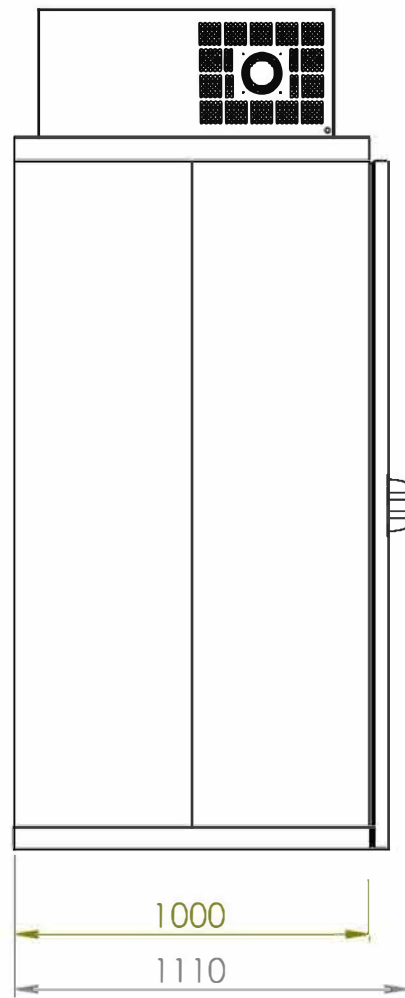
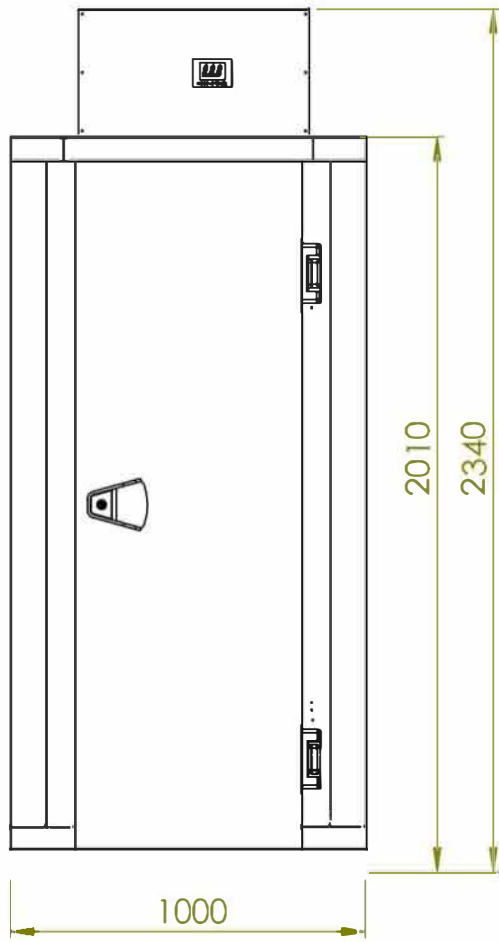
KF1010A3
TECHNISCHES HANDBUCH
TECHNICAL MANUAL

INHALTSVERZEICHNIS / INDEX :

- 1. MERKMALE / CHARACTERISTICS**
- 2. INNEN- UND AUSSENMAßE/ INSIDE , OUTSIDE DIMENSIONS**
- 3. EXPLOSIONSZEICHUNG / EXPLODED VIEW**
- 4. ERSATZTEILLISTE/ SPARE PART LIST**
- 5. SCHALTPLAN / WIRING DIAGRAM**

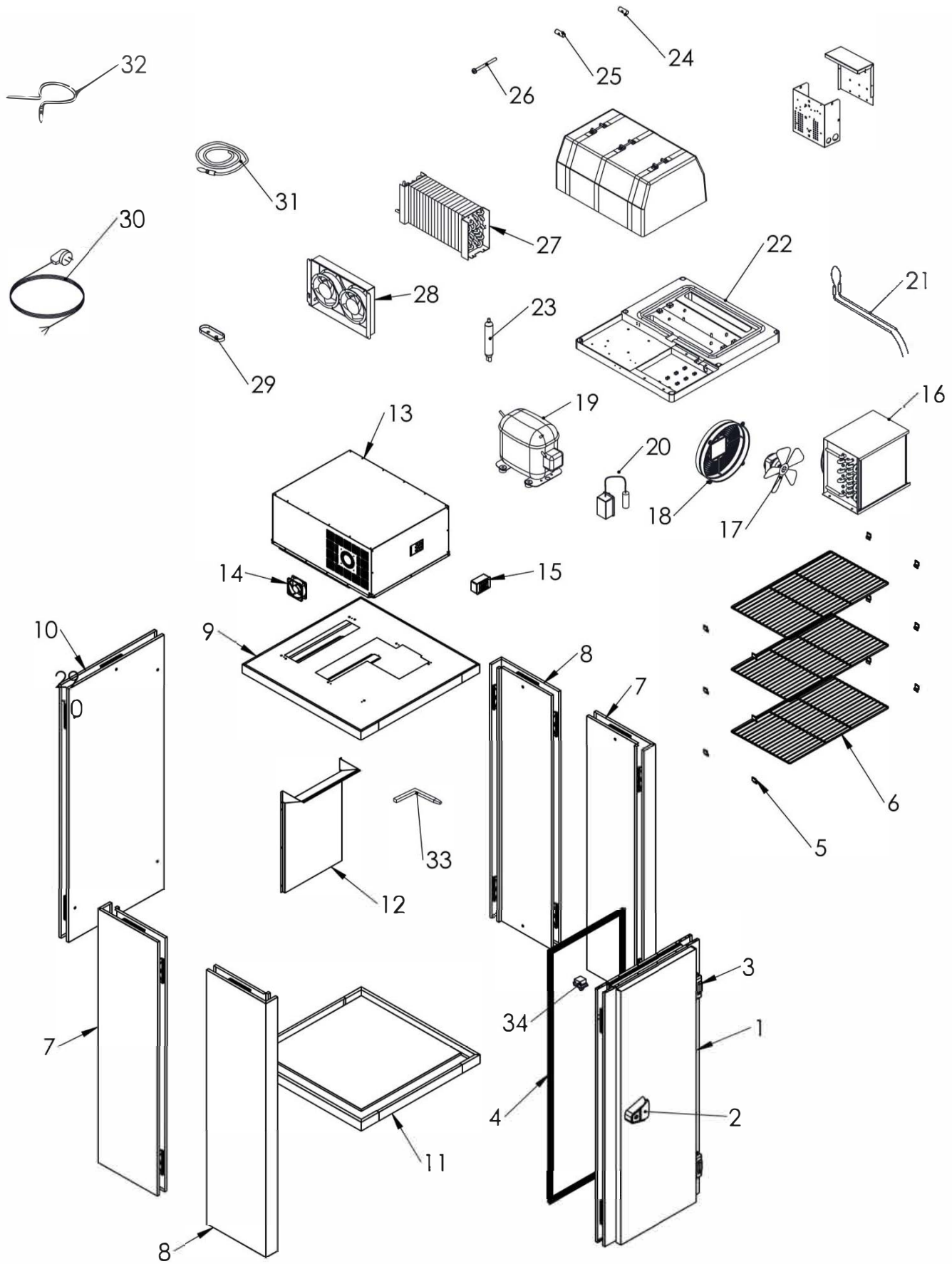
KF1010A3





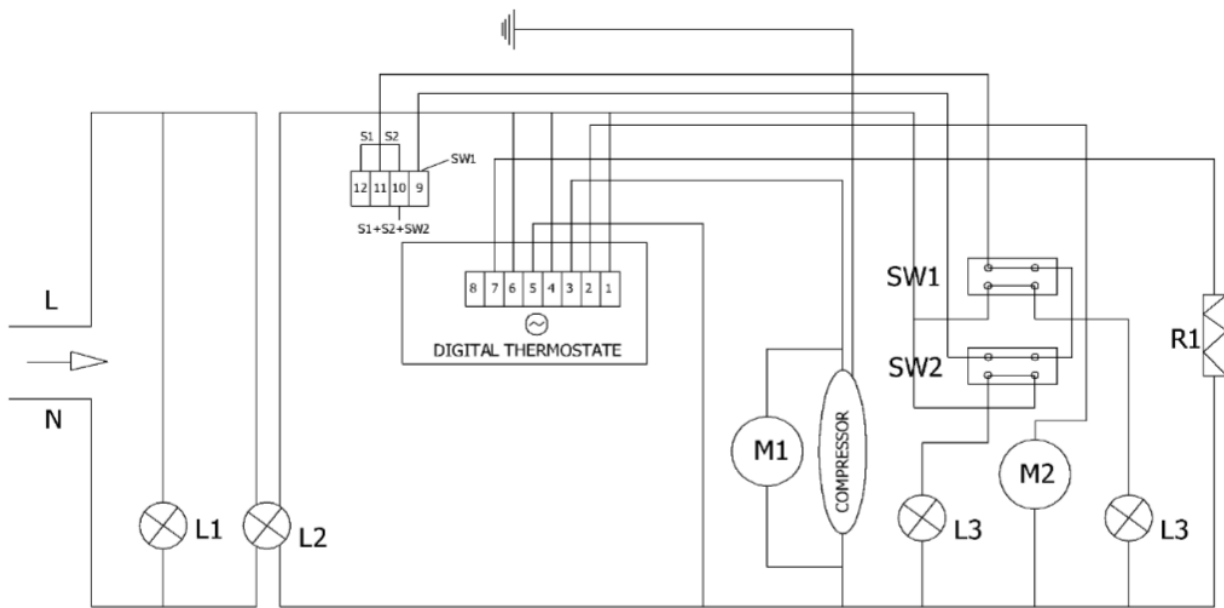
AUSSENMAßE/ OUTSIDE DIMENSIONS : 1000X1110X2340

INNENMAßE/ INSIDE DIMENSIONS: 840X840X1850



KF1010A3 ERSATZTEILLISTE / KF1010A3 SPARE PART LIST

NR.	CODE	BEZEICHNUNG	DESCRIPTION	ANZAHL QUANTITY
1	01A01KA20180	TÜR	DOOR	1
2	B00K1107	TÜRVERRIEGELUNG	DOOR LOCK	1
3	B02ME104	SCHARNIER	HINGE	2
4	A00C0196	CN100 TÜRDICHTUNG	CN100 DOOR GASKET	1
5	B00DI106	REGALSTÜTZE	SHELF CLAW	12
6	B01RF147	REGAL	SHELF	3
7	01A01KP5010201	SEITENPLATTE (M-F)	SIDE PANEL (M-F)	2
8	01A01KP5010201	SEITENPLATTE (M-F)	SIDE PANEL (F-F)	2
9	01A01TV1010	OBERE PLATTE	TOP PANEL	1
10	01A01PA800	HINTERE PLATTE	REAR PANEL	1
11	01A01TB1010	UNTERE PLATTE	BOTTOM PANEL	1
12		LÜFTUNGSGITTER	VENTILATION SHEET	1
13		PLATTE	PLATE	1
14	A00FA100	QUADRATISCHER LÜFTER (120*120)	SQUARE FAN (120*120)	1
15	A00DJ156	EVCO DIGITALER THERMOSTAT	EVCO DIGITAL THERMOSTAT	1
16	A00KN143	VN14-M KONDENSATOR R-290	VN14-M CONDENSER R-290	1
17	A00FA104	ELCO 16W KONDENSATOR-LÜFTER	ELCO 16W CONDENSER FAN	1
18	A00EP101	LÜFTERABDECKUNG	FAN COVER	1
19	A00K0203	NEU 6210 U R290 - 50Hz	NEU 6210 U R290 - 50Hz	1
20	A00K0203-A	NEU 6210 U RELAIS-BOX	NEU 6210 U RELAY BOX	1
21	B00REZ116	200W WIDERSTAND	200W RESISTANCE	1
22	B00SP101	UNTERES KUNSTOFFTEIL	BOTTOM PLASTIC PART	1
23	A00DR100	TROCKNER	DRAYER	1
24	B00SG100	SCHRAUBENABDECKUNG	SCREW COVER	3
25	B00SG101	SCHRAUBENABDECKUNG	SCREW COVER	3
26		M6 X 80 SCHRAUBE	SCREW - M6 X 80	3
27	A00EV140	VN14-M VERDAMPFER R290	VN14-M EVAPORATOR R290	1
28	A00FA102	VERDAMPFER-LÜFTERMOTOR (COPREL)	EVAPORATOR FAN MOTOR (COPREL)	1
29	B00TK100	SONDENABDECKUNG	PROP COVER	1
30	B00FK100	NETZKABEL	PLUG CABLE	1
31	A00DJ109	SONDE	PROBE	1
32	A00DJ102	SONDE	PROBE	1
33	B00K1108	MONTAGESCHLÜSSEL	ASSEMBLY KEY	1
34	B00DU103	SCHALTER	SWITCH	1
	01A01SG368	KÜHLGRUPPE	COOLING GROUP	1



SW1-SW2: EIN/AUS-SCHALTER / ON/OFF SWITCH

S1-S2 : SENSOR

XR60 C : DIGITALER THERMOSTAT/ DIGITAL THERMOSTAT

M1: LÜFTERMOTOR / FAN MOTOR

M2 : VERDAMPFER-LÜFTERMOTOR / EVAPORATOR FAN MOTOR

L1: ABTAU-LAMPE / DEFROST LIGHT

L2: EIN / AUS LAMPE / ON OFF LIGHT

L3: ABTAU-LAMPE / DEFROST LIGHT

R1: ABTAUWIDERSTAND /DEFROST RESISTANCE

T: 0 - 90 THERMOSTAT

GASFÜLLVENTIL / GAS CHARGE VALVE

ABTAUSONDE /
DEFROST PROBE

KOMPRESSOR / COMPRESSOR

VERDAMPFER / EVAPORATOR

LÜFTER / FAN

KONDENSATOR
/ CONDENSOR

KAPILLARE /
CAPILLARY

FILTER /
FILTER

LÜFTER / FAN

