

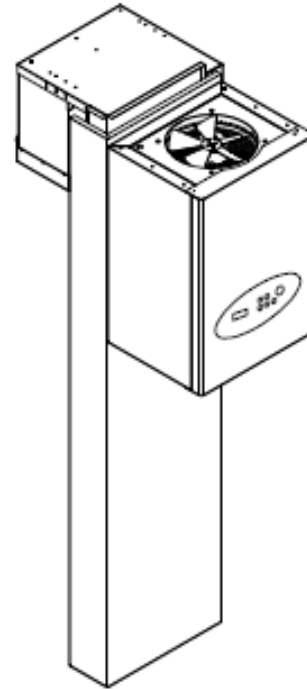
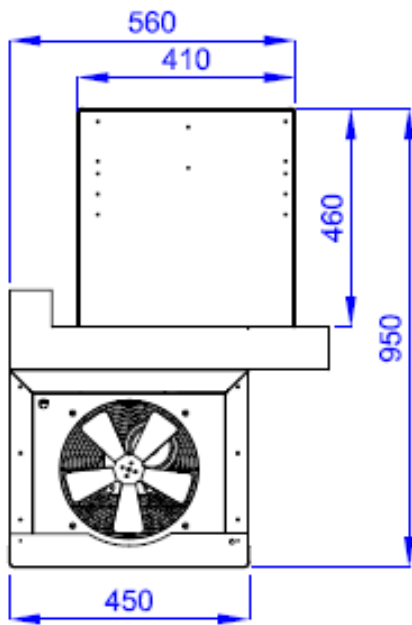
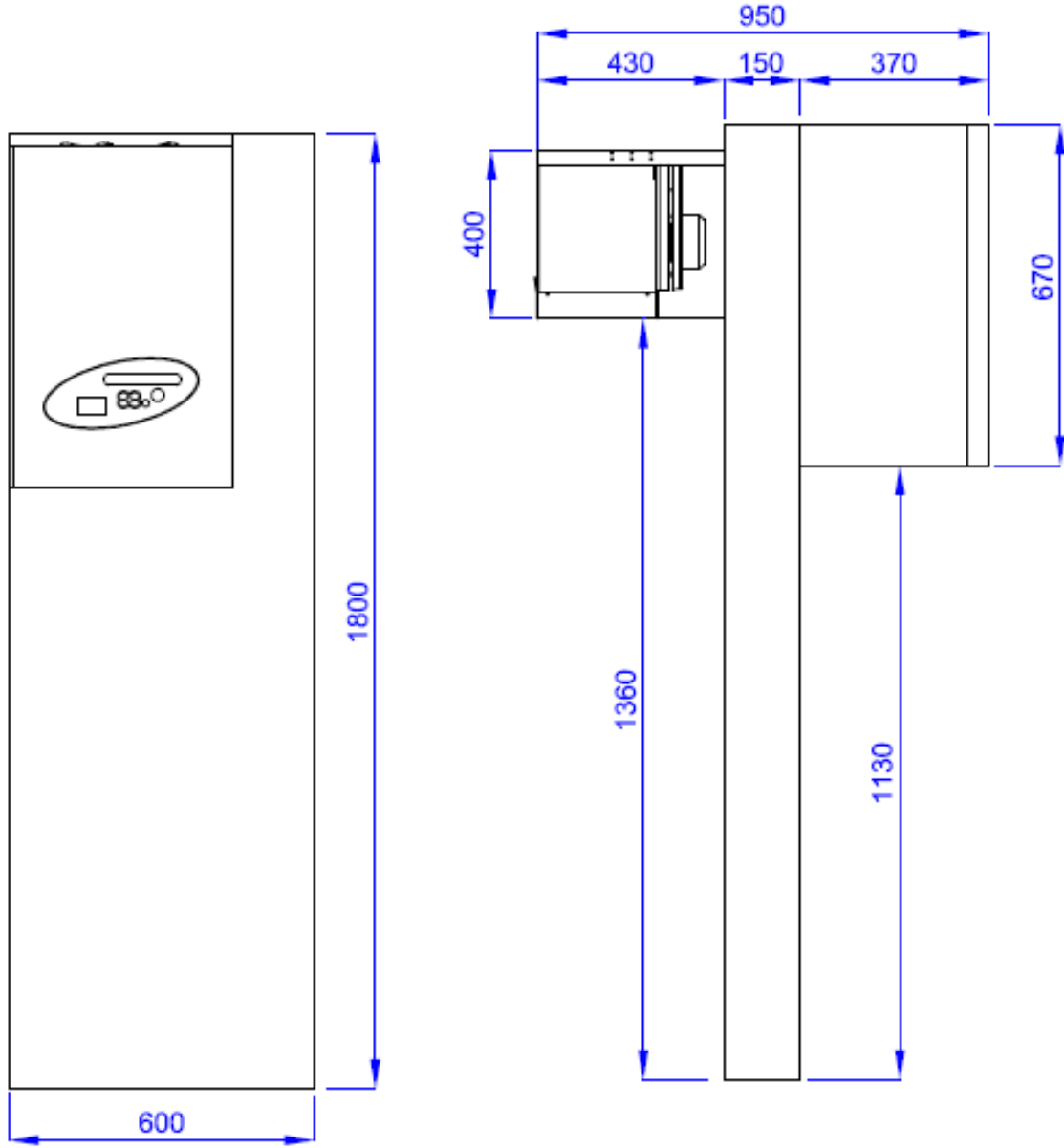
**WKAMF75N
PANEL COOLING
MATERIAL AND TECHNICAL CHARACTERISTICS MANUEL**

INDEX :

- 1- CHARACTERISTICS
- 2- INSIDE, OUTSIDE DIMENSIONS
- 3- EXPLODED VIEW
- 4- SPARE PART LIST
- 5- CIRCUIT SCHEME

WKAMF75N





RESİM ADI / TANIM:

WKAMF75N

VİZE, İYEN KURUM BİLGİLERİ 1305-73 (4/20)

RESİM NO

MALZEME

ÖLÇÜLER

ÇİZEN

İLYAS YILMAZ

TARİH

06.06.2016

KONTROL

BAHRI İNCEÇAM

ÖLÇÜ
mm

ÖLÇÜ
1:1



REV. NO:

TARİH:

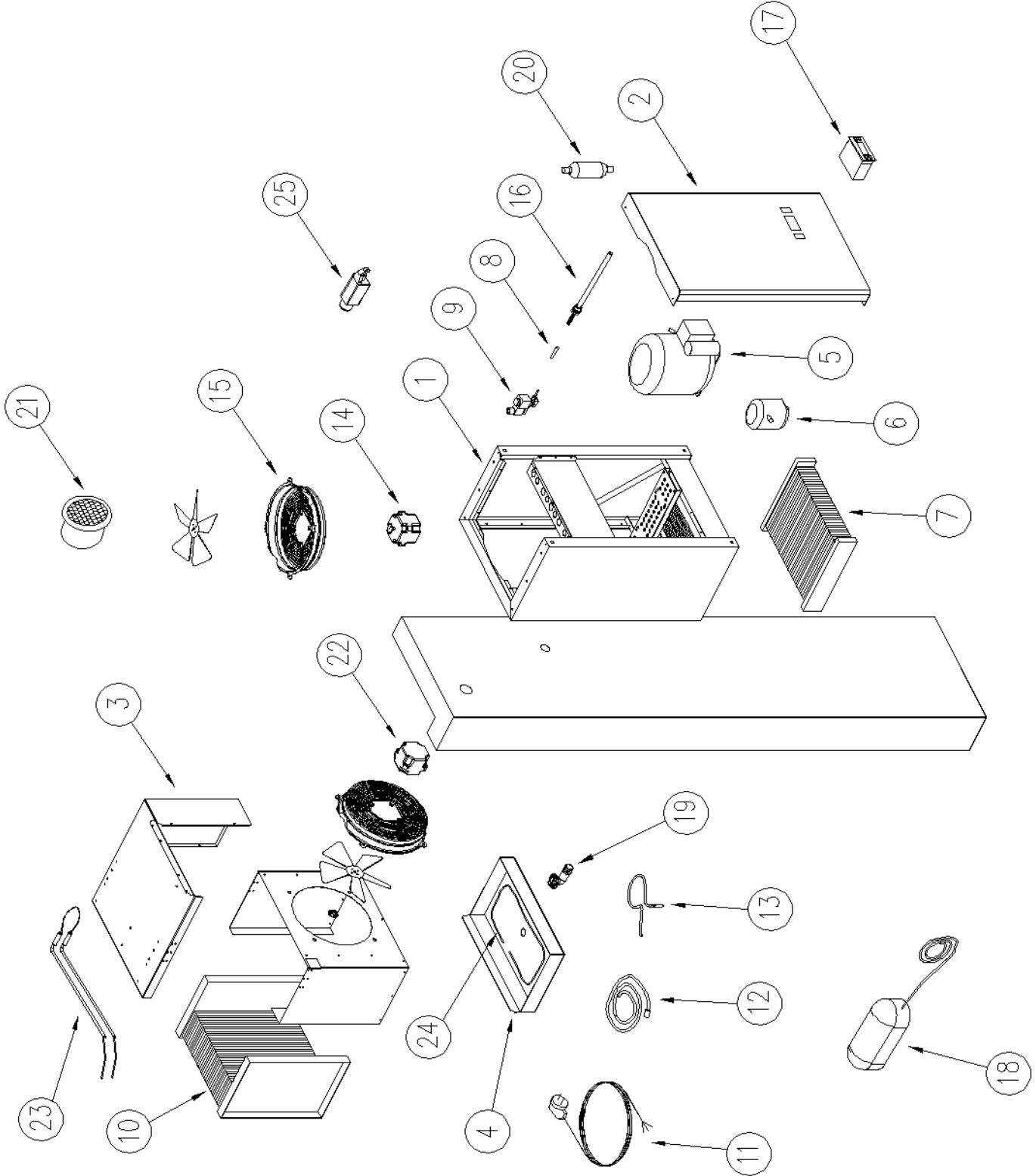
Revizyon Sebebi:

WKAMF75N SPECIALITIES

Climate Class	:T
Safety Class	:1
Working Tempature C	: -22°C / -10°C
Thermostat Set Temperature	:- 18°C
Environment Temperature	: +43°C
Environment Moisture Propertion	:%65
Energy Consumption	:0,65 KW/h
Power	:1+1/2 HP
Voltage- Frequency	:230V / 50 Hz
Digital Thermostat	:Digital Thermometer
Energy Lamp	: Ad / PCC1

TECHNICAL CHARACTERISTICS

Outside Dimensions	:600x950x1800mm
Package Dimensions	:680x1100x2000mm
Inside Volume	: 5.1m ³ - 7.5 m ³
Gross Weight	: 140 kg
Net Weight	: 130 kg
Inside-Outside Body	: 0,50 mm PVC coated galvanized white sheet.
Insulation Metarial	42 kg/m3 Density Polyurethane
Insulation Metarial Thickness	: 120 mm
Compresor	: NJ 2212 GK R404 50Hz
Condanser	: 1700W--Condanser (3,0-7,5 m3)
Condanser Fan	: EBM--A2E250--230V-74A--115/165W
Evaporatör	: 1150W--Evap (3,0-7,5 m3) Deepfreeze
Evaporatör Fan	: EBM--S4E300--230V-40A--72/90W
Dryer	: GMC--3/8" (SC083S) 45bar
Refrigerator Gas	: R452 A
Ref. Gas Quantity	: 950 gr
Certifications	: In accordance with EN 60335-2-4
Serial No	: Packed And Easy Read
Packing	: Wooden Palet is Down And Covered
Qualty Time	: 2 Years After arriving the end user point. Warranty Certicate and User Manuel With the Unit.



RESİM ADI/TANIM: WKAMF75N	RESİM NO	CİZEN İLYAS YILMAZ	REV. N°:	Farih:
	MALZEME	TARİH 06.06.2016	U.M. mm	ALÇEK 1:1
	ÖLÇÜLER	KONTROL BAHRİ İNCEÇAM	Revizyon Sebebi:	

VERİLMEYEN TOLERANS DEĞERLERİ 7525 - 73 (40,2)

SGL5175-GGM-EVC-R452 SPARE PART LIST

NO	STOCK NO	MATERIAL NAME	QTY
1	SGL20151750	COOLING GROUP BODY SHEET	1
2	SGL20130505	COOLING GROUP CANOPY SHEET	1
3	SGL20151753	COOLING GROUP REAR SHEET	1
4	SGL20151752	WATER BOX	1
5	A00KO122	NJ 2212 GK R404 50Hz	1
6	B00LT100	LIQUID TANK	1
7	A00KN575	CONDANSER--(3,0-7,5 m3) 1700W	1
8	B00EX101	EXPENSION VALVE NEEDLE	1
9	B00EX100	EXPENSION VALVE	1
10	A00EV115	EVAPORATOR-(3,0-7,5 m3) 1150W	1
11	B00FK100	PLUG CABLE	1
12	A00DJ109	PROP (3mt)	1
13	A00DJ102	PROP (1,5mt)	1
14	A00FA119	KOND.FAN MOTOR (EBM-115/165W)	1
15	A00FA120	KOND.FAN PROTECTION WIRE	1
16	B00REZ106	WATER EVAPORATION RESISTOR	1
17	A00DJ156	EVC SPECIAL CONTROL PANEL	1
18	B00LA142	LED LAMP	1
19	B00EB102	EVAP OUT ELBOW	1
20	A00DR102	DRAYER 3/8" (GMC)	1
21	B00SL103	PRESSURE VALVE	1
22	A00FA112	EVAP FAN MOTOR (EBM-72/90W)	1
23	B00REZ124	400W--RESISTANCE	1
24	B00REZ112	DOOR RESISTANCE 7mt	1
25	B00DU106	DOOR SWITCH	1

