

BGKF235

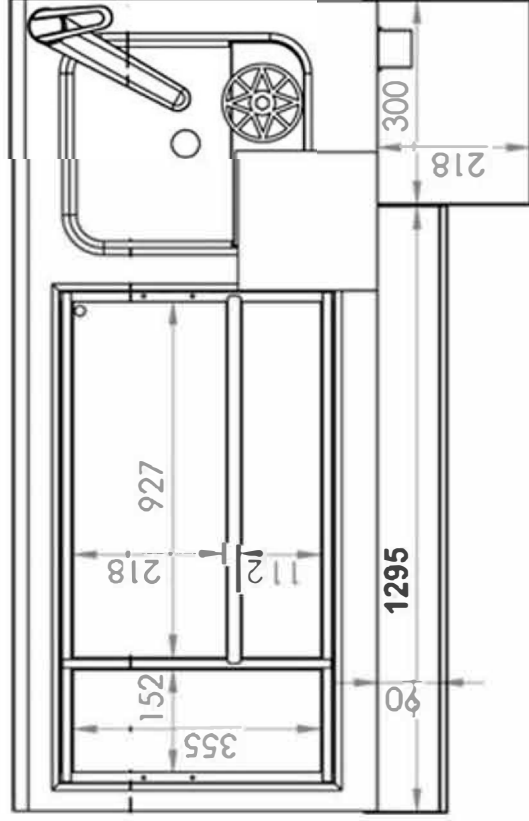
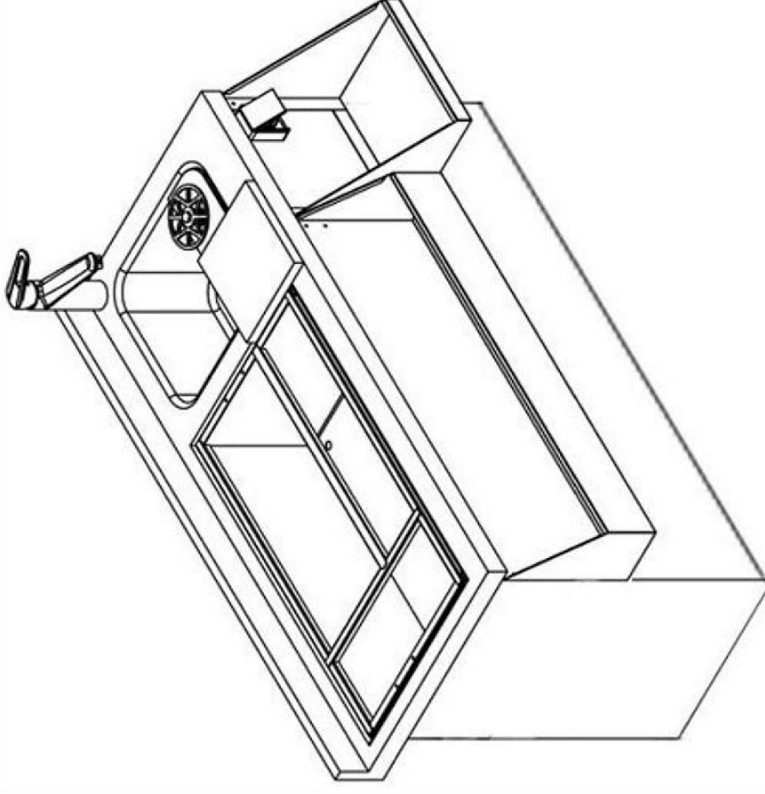
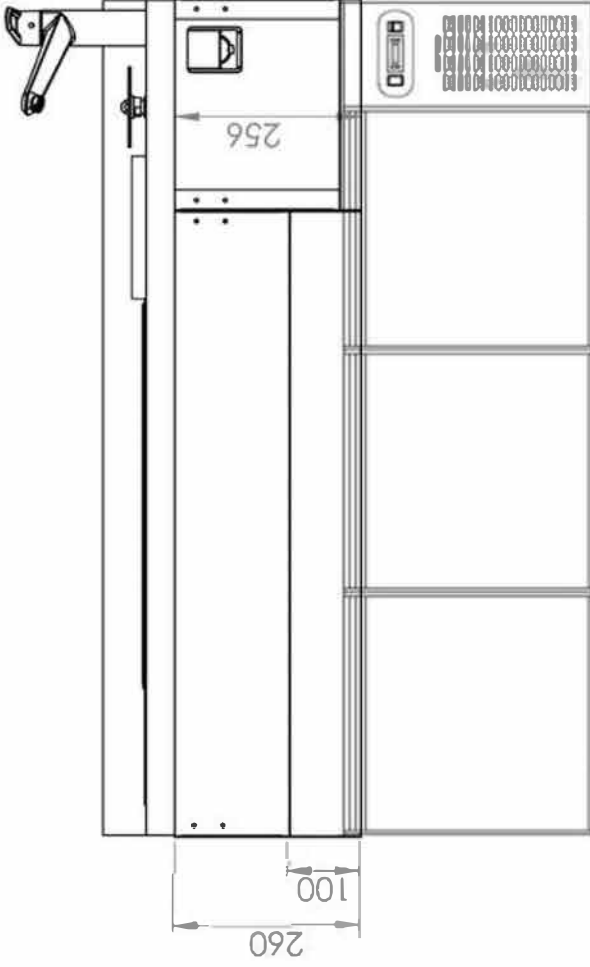
MATERIAL UND TECHNISCHE EIGENSCHAFTEN HANDBUCH MATERIAL AND TECHNICAL CHARACTERISTICS MANUEL

INHALT / INDEX :

- 1. EIGENSCHAFTEN / CHARACTERISTICS**
- 2. Innere und äußere
 Abmessungen / INSIDE , OUTSIDE DIMENSIONS**
- 3. EXPLOSIONSBILDER / EXPLODED VIEW**
- 4. ERSATZTEILLISTE / SPARE PART LIST**
- 5. GAS- UND
 STROMREGELUNG / GAS AND ELECTRICAL SCHEMA**

BGKF235





AUSSENMASSE / OUTSIDE DIMENSIONS = 1700x700x1000
 INNENMASSE / IN SIDE DIMENSIONS = 1295x562x290

RESİM ADI / TANIMI:	RESİM NO	ÇİZİM	REV.N° :	Tarih:
	punc kod:	TARİH		
	MALZEME material	KONTROL		
	ÖLÇÜLER dimensions			

KARAKTERİSTİK ÖZELLİKLERİ / CHARACTERISTIC SPECIALITIES

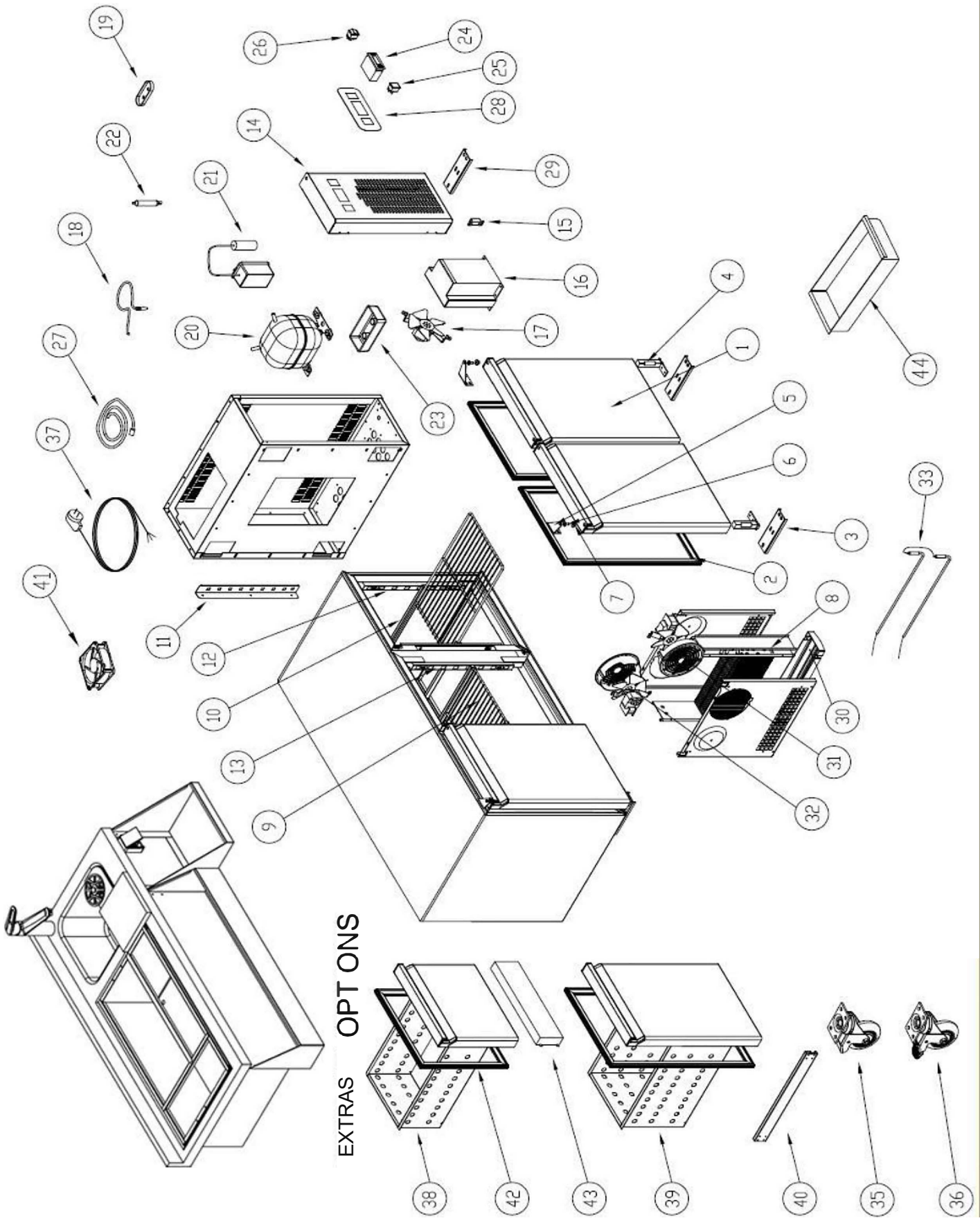
İklim Sınıfı / Climate Class	:D
Güvenlik Sınıfı / Safety Class	:1
Çalışma Sıcaklığı / Working Tempature C	:-2C / +8C
Termoster Set Sıcaklığı / Thermostate Set Temperature	:-1C
Ortam Sıcaklığı / Environment Temperature	: +43C
Ortam Nem Oranı / Environment Moisture Propertion	: %65
Enerji Tüketimi / Energy Consuption	:0,23 KW/H
Güç / Power	:0,32 KW
Voltaj- Frekans / Voltage- Frekans	: 220V / 50 Hz

AKSESUARLAR VE KONTROL LAMBALARI / ACCESORIES AND CONTROL SWITCHES

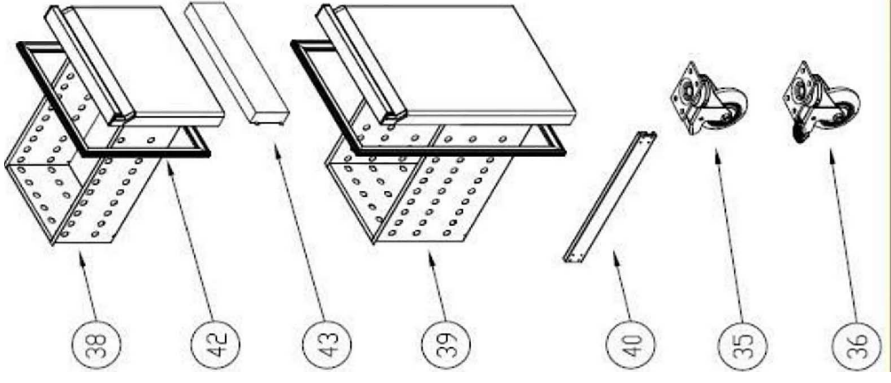
Dijital Termostat / Digital Thermometer	: Digital Thermometer
Enerji Lambası / Energy Lamp	: Ad / PCC1
Açma Kapama Düğmesi / Power Switch	: Ad / PCS1
Menteşe Grubu / Hinges Group	: Ad / PCS3
Ayak / Stand	: Ad/PCS 5 Paslanmaz Ayak / + stainlies Steel Stand
Raf /Shelf	:3Ad.Plastik Kaplı Raf / 3 Unts Plastic Coated Shelf

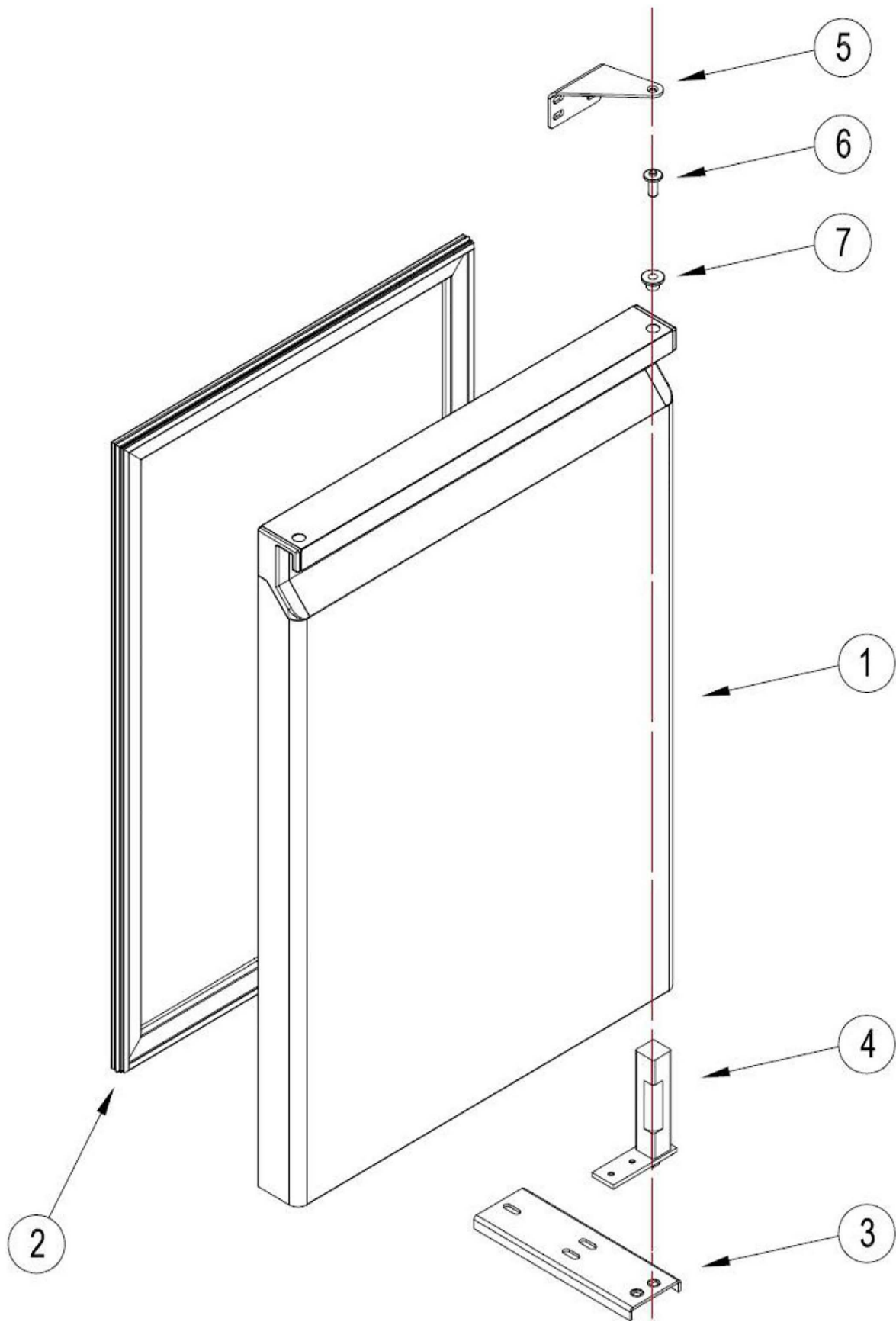
TEKNİK ÖZELLİKLER / TECHNICAL CHARACTERISTICS

Dış boyutlar / Outside Dimensions	:1600x700x600mm
İç Boyutlar / Inside Dimensions	:1295x562x390mm
Ambalaj Boyutları / Package Dimensions	:1700x800x750mm
İç Hacim / Inside Volume	: 280 lt
Brüt Ağırlık / Gross Weight	: 145 kg
Net Ağırlık / Net Weigt	: 125 kg
Dış Gövde / Outside Body	: 0,60 mm INOX 304 SB+PVC
İç Gövde / Inside Body	: 0,50 mm INOX 304 MAT+PVC
Yalıtım Maddesi Kalınlığı / Insulation Metarial Thicnes	: 50 mm
Yalıtım Maddesi Yoğunluğu / Insulation Metarial Volurr	: 42 Kg / m3 +/-1
Kompresör / Compresor	: NEK 6181 U (1/4HP)-R290
Kondanser / Condanser	: Çift lamelli kondanser-R290
Kondanser Fanı / Condanser Fan	: Coprel W5/2A--13/26W--230V-50/60Hz
Evaporatör / Evaporatör	: NTV tip evap / NTV type evap
Evaporatör Fan / Evaporatör Fan	: Coprel W5/2A--13/26W--230V-50/60Hz x 2 Adet
Kurutucu Filtre / Dryer	: 30 gr 15002SGDR02 Çift Girişili
Soğutucu Akışkan Gaz / refrigerator Gas	: R290 A
Soğutucu Akışkan Miktarı / Ref. Gas Quantity	: 90 gr
Onaylar / Certifications	: TS 2225 EN 60335-2-4' ye uygundur.
Seri No / Serial No	: Ambalajlı Halde Okunacak Şekilde Uygun Yere Yazılır / Packed And Easy Read
Ambalaj / Packing	: Alta Tahta Palet, Karton ve Havalı Naylon İçinde / Wooden Palet İs Down And Covered
Garanti Süresi / Qualty Time	: Kullanım Noktasına Ulaşımından İtibaren İmalat Hatalarına Karşı 2 Yıl. Her Ürün İle Garanti Belgesi ve Yetkili Servis Listesi Mevcuttur. / 2 Years After arriving the end user point. Warranty Certicate and User Manuel With the Unit.

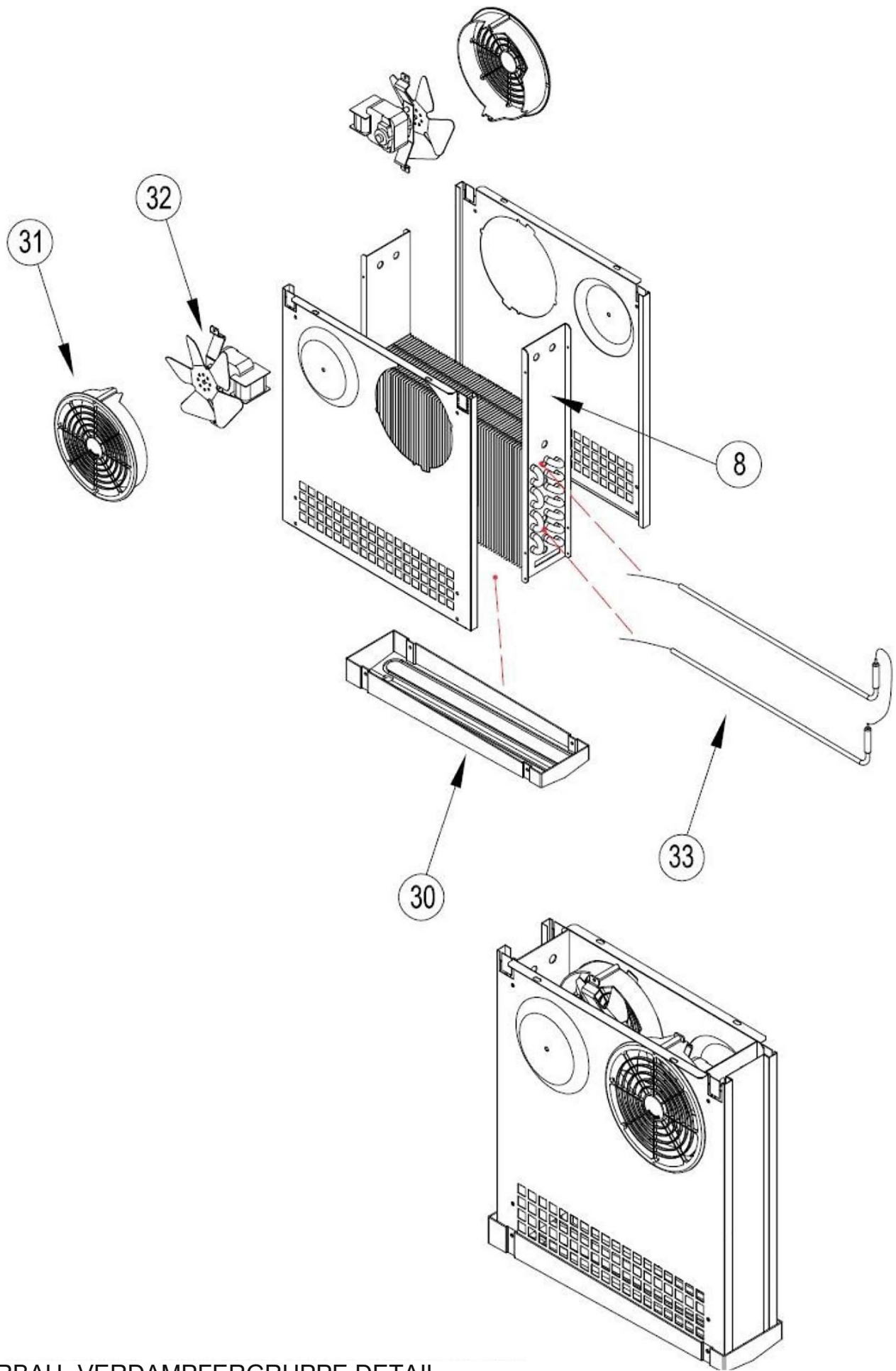


EXTRAS OPTONS





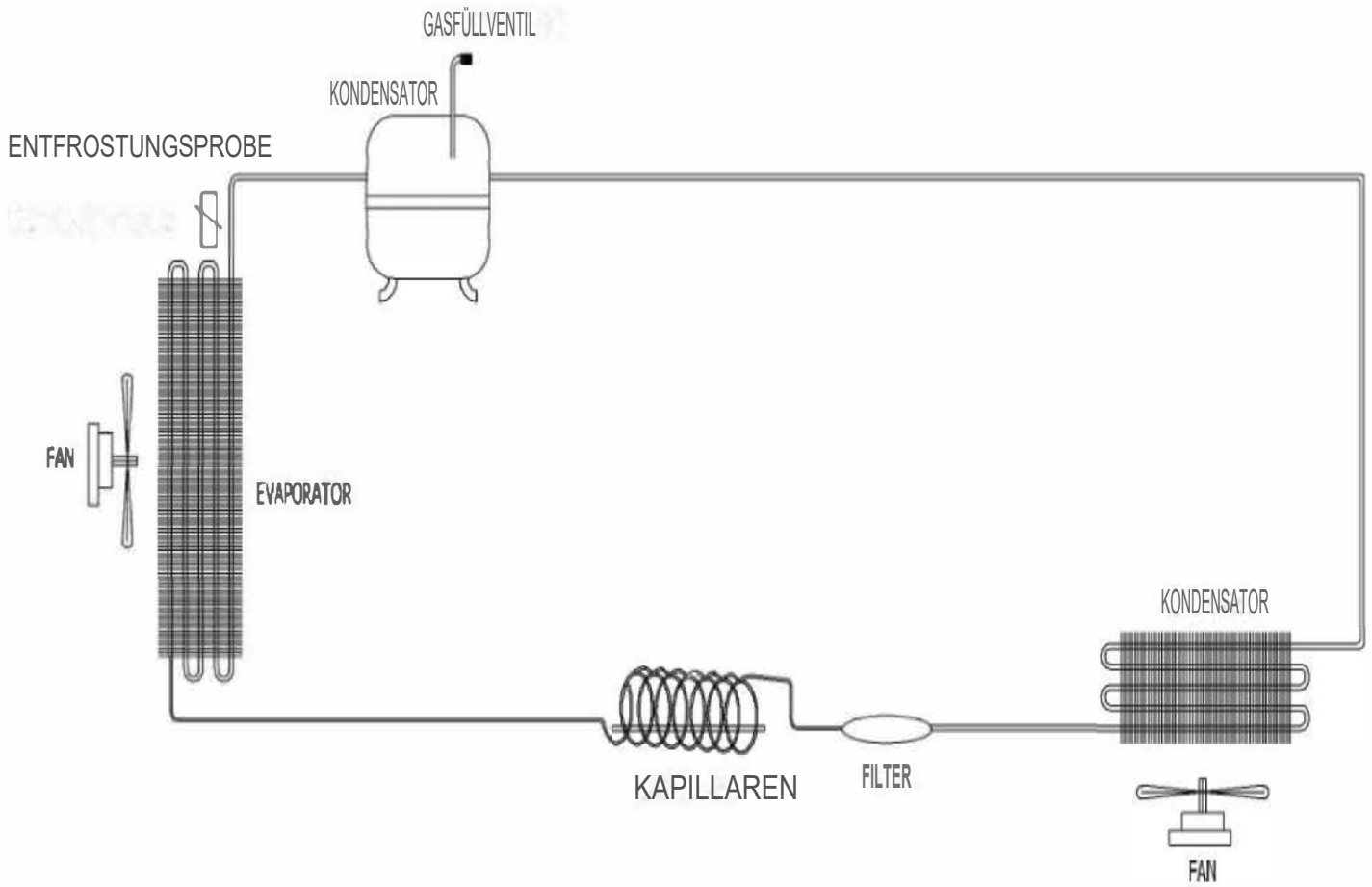
UNTERBAUKÜHLSCHRÄNKE - TÜRAUFNAHME



UNTERBAU- VERDAMPFERGRUPPE DETAIL

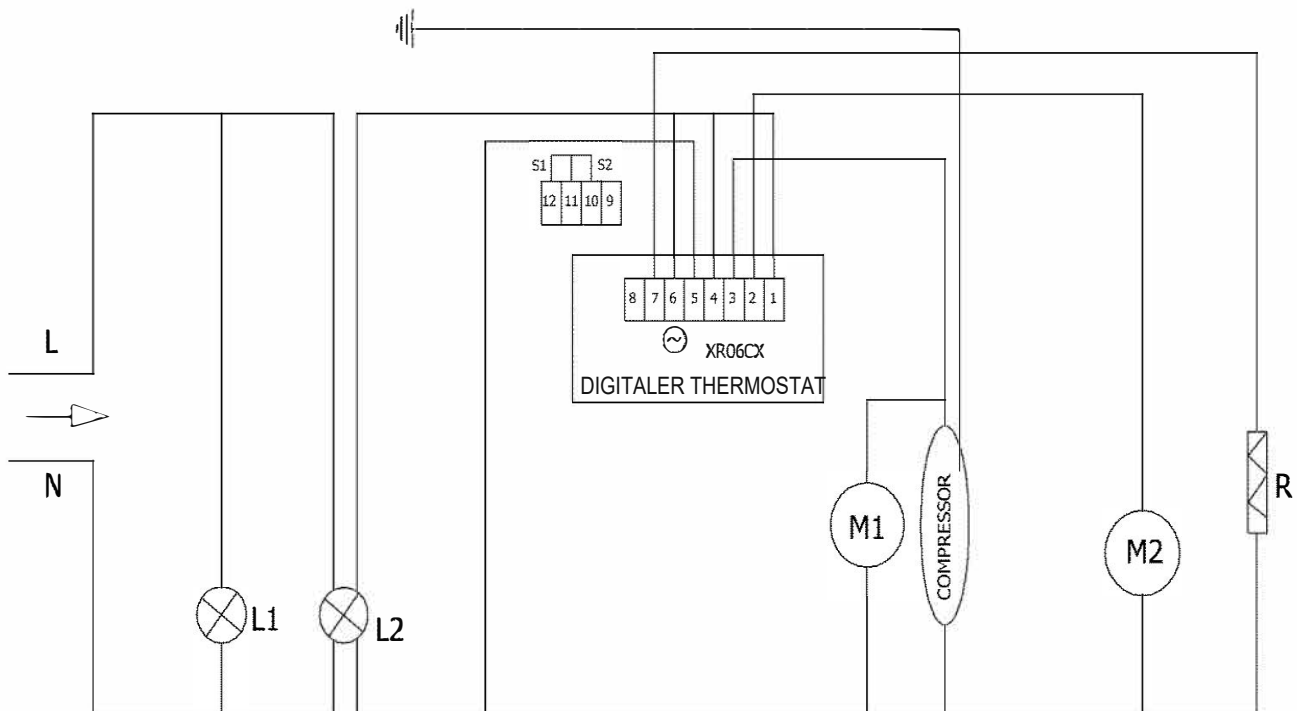
ERSATZTEILLISTE / SPARE PART LIST

NR.	STOCK NR.	TEIL NAME	TEIL NAME	ADET QTY
1	01A01KA110	TÜR	DOOR	3
2	A00CO104	TÜR-DICHTUNG	DOOR GASKET	3
3	30080007	UNTERER SCHARNIERWINKEL	LOWER HINGE BRACKET	3
4	B02ME100	AUFRECHTES SCHARNIER UND TEILE	UPRIGHT HINGE AND PARTS	3
5	30080008	OBERER SCHARNIER	UPPER HINGE	3
6	B01ME104	OBERER SCHARNIERSTIFT	UPPER HINGE PIN	3
7	B01ME103	KUNSTSTOFFSCHARNIERBUCHSE	PLASTIC HINGE BUSHING	3
8	A00EV106	VERDAMPFER	EVAPORATOR	1
9	B01RF100	RAF-CGN 530X333	SHELF-CGN 530X333	3
10	P17000226	REGALFÜHRER - CGN 530m	SHELF GUIDE - CGN 530m	6
11	P17000325-A	REGAL STANDARD - RÜCKSEITE	SHELF STANDARD - BACK	4
12	P17000325-B	REGAL STANDARD - SEITE	SHELF STANDARD - SIDE	4
13	P17000325-C	REGAL STANDARD - MITTEL	SHELF STANDARD - MIDDLE	4
14	P16000424	KAJÜTE	CANOPY	1
15	B01ME112	MAGNETSCHARNIERE	MAGNETIC HINGES	2
16	A00KN106	KONDENSATOR	CONDENSER	1
17	A00FA102-E	VERDUNSTUNGSGBLÄSE (ANSAUGUNG)	EVAP FAN (SUCTION)	1
18	A00DJ102	PROP	PROBE	1
19	B00TK100	FÜHLERDECKEL	PROBE COVER	1
20	A00KO205	KOMPRESÖR NEK 6181 U (1/4HP)	COMPRESSOR NEK 6181 U (1/4HP)	1
21	A00KO205-A	ROLE KUTUSU	RELAY BOX	1
22	A00DR100	DRAYER	DRYER	1
23	B01BH103	KOMPRESÖR SU TAVASI	COMPRESSOR WATER PAN	1
24	A00DJ156	EVCO DİJİTAL	CONTROLLER	1
25	B00DU101	POWER TUŞU	POWER SWITCH	1
26	B00DU102	ON-OFF TUŞU	ON - OFF SWITCH	1
27	A00DJ109	PROP UCU - 3mt	PROBE	1
28	A00DJ105	DİJİTAL ETİKET	DIGITAL LABEL	1
29	P30080009	KANOPI MENTEŞESİ	CANOPY HINGE	1
30	B01BH101	EVAP SU TAVASI	EVAPORATOR WATER PAN	1
31	A00EP100	FAN KORUMA PLASTİĞİ	PLASTIC FAN PROTECTION	2
32	A00FA102	EVAP FAN MOTORU	EVAP FAN MOTOR	2
33	B00REZ116	200W FİŞEK REZİSTANS	200W RESISTANCE	1
37	B00FK100	ŞEBEKE KABLOSU	PLUG CABLE	1
38	01A01CK731	1/2 ÇEKMECE--UGN	1/2 DRAWERS--UGN	
39	01A01CK711	1/1 ÇEKMECE--UGN	1/1 DRAWERS--UGN	
40	A00CK100	ÇEKMECE RAYI 70LİK	DRAWER RAIL	
41	A00FA100	KARE FAN MOTORU	SQUARE FAN MOTOR	1
42	A00CO100	ÇEKMECE CONTASI	DRAWER GASKET	
43	01A01OR100	ÇEKMECE ORTA DİREK	DRAWERS MIDDLE BRIDGE	
44	B01BH100	DİK DOLAP SU TAVASI	UPRIGHT WATER PAN	1
	01A01EV273	CİHAZALTI EVAP GRUBU	UNDERCOUNTER REF EVAPARATOR	1



HORIZONTALER KÜHLSCHRANK NORMAL ELEKTRISCHER SCHALTPLAN

HORIZONTAL REFRIGERATORS NORMAL ELECTRICAL SCHEMA



XR060CX : DIGITAL THERMOTER / DIGITALES THERMOSTAT
 M1: VERFLÜSSIGERLÜFTERMOTOR / CONDENSER FAN MOTOR
 M2: LÜFTERMOTOR/ EVAP FAN MOTOR
 S1 : ZIMMERPROB / ROOM PROB
 S2 : VERDAMPFERFÜHLER / EVAPORATE PROB

L1 : STROMLAMPE/ POWER LAMB
 L2 : SCHALTEREIN/AUSLAMPE/ ON OFF UGHT
 R: VERDAMPFER REZISTANSI / EVAPORATE REZISTANCE