

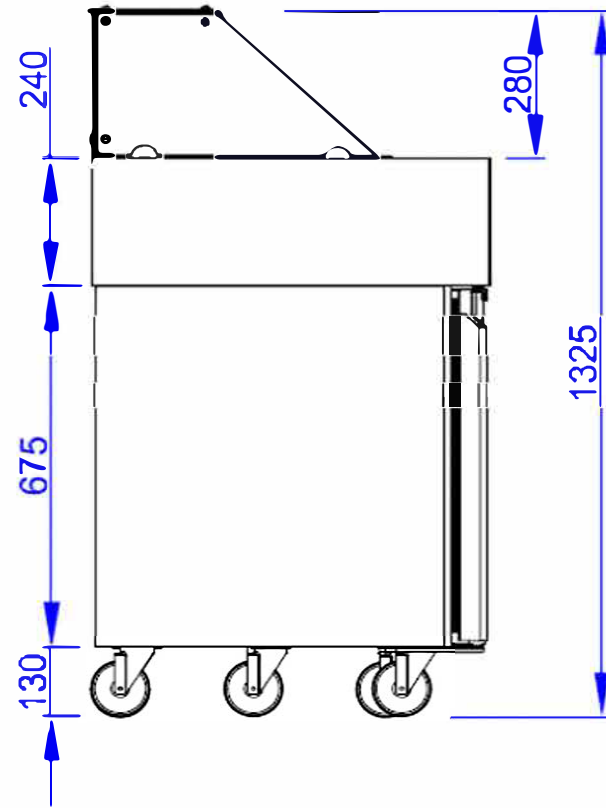
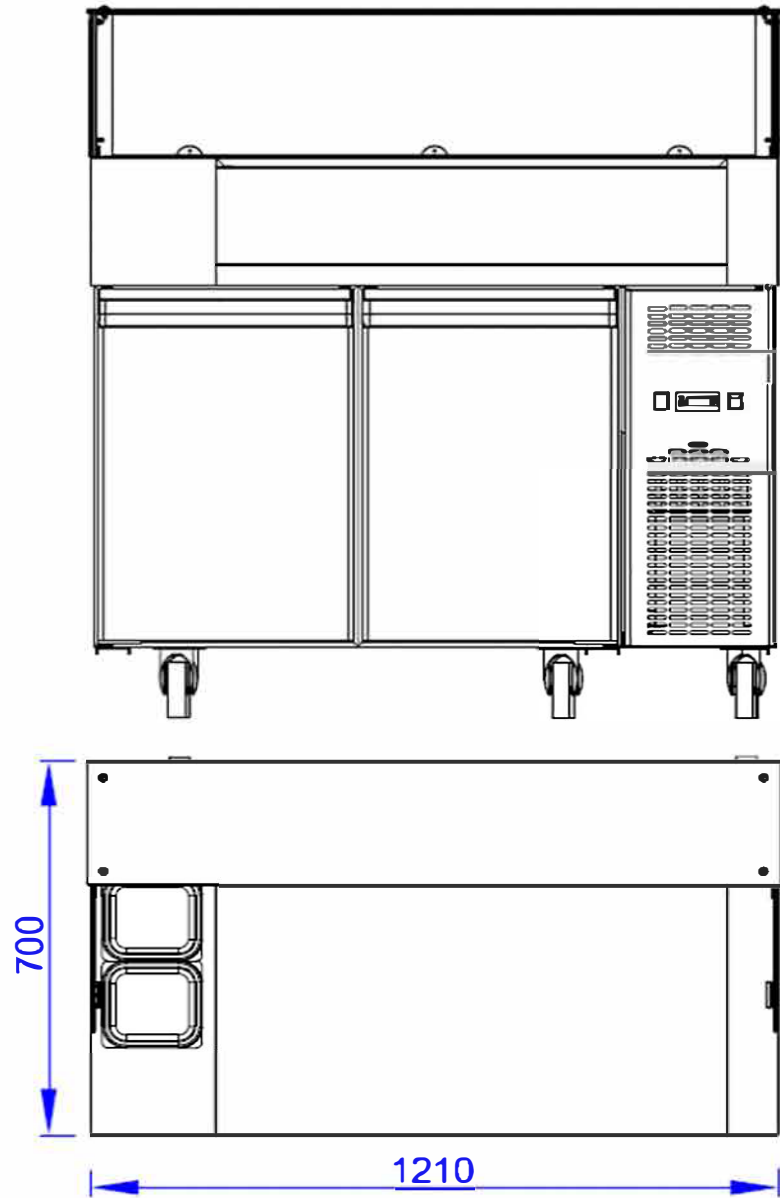
# **ZBF127ND**

## **MATERIAL AND TECHNICAL CHARACTERISTICS MANUEL**

### **INDEX :**

- 1. CHARACTERISTICS**
- 2. INSIDE , OUTSIDE DIMENSIONS**
- 3. EXPLODED VIEW**
- 4. SPARE PART LIST**
- 5. GAS AND ELECTRICAL SCHEMA**





OUTSIDE DIMENSIONS = 1210X700X1325  
IN SIDE DIMENSIONS = 1100X575X640

## CHARACTERISTIC SPECIALITIES

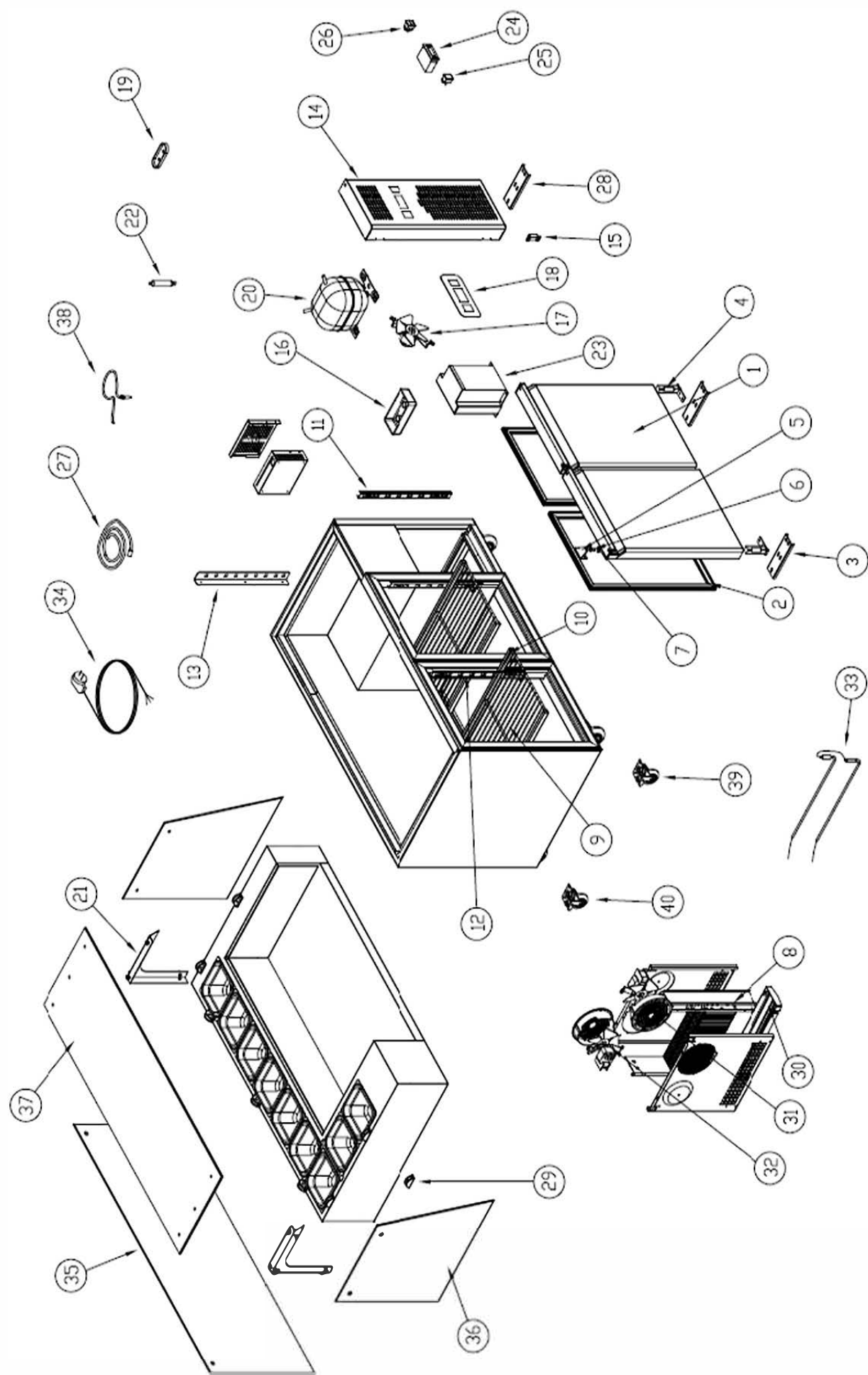
Climate Class	:T
Safety Class	:1
Working Tempature C	:-2C / +8C
Thermostate Set Tempature :-1C	
Environment Temperature	: +43C
Environment Moisture Propertion : %65	
Energy Consuption	:0,25 KW/h
power	:0,38 KW
Voltage- Frekans	: 240V / 50 Hz

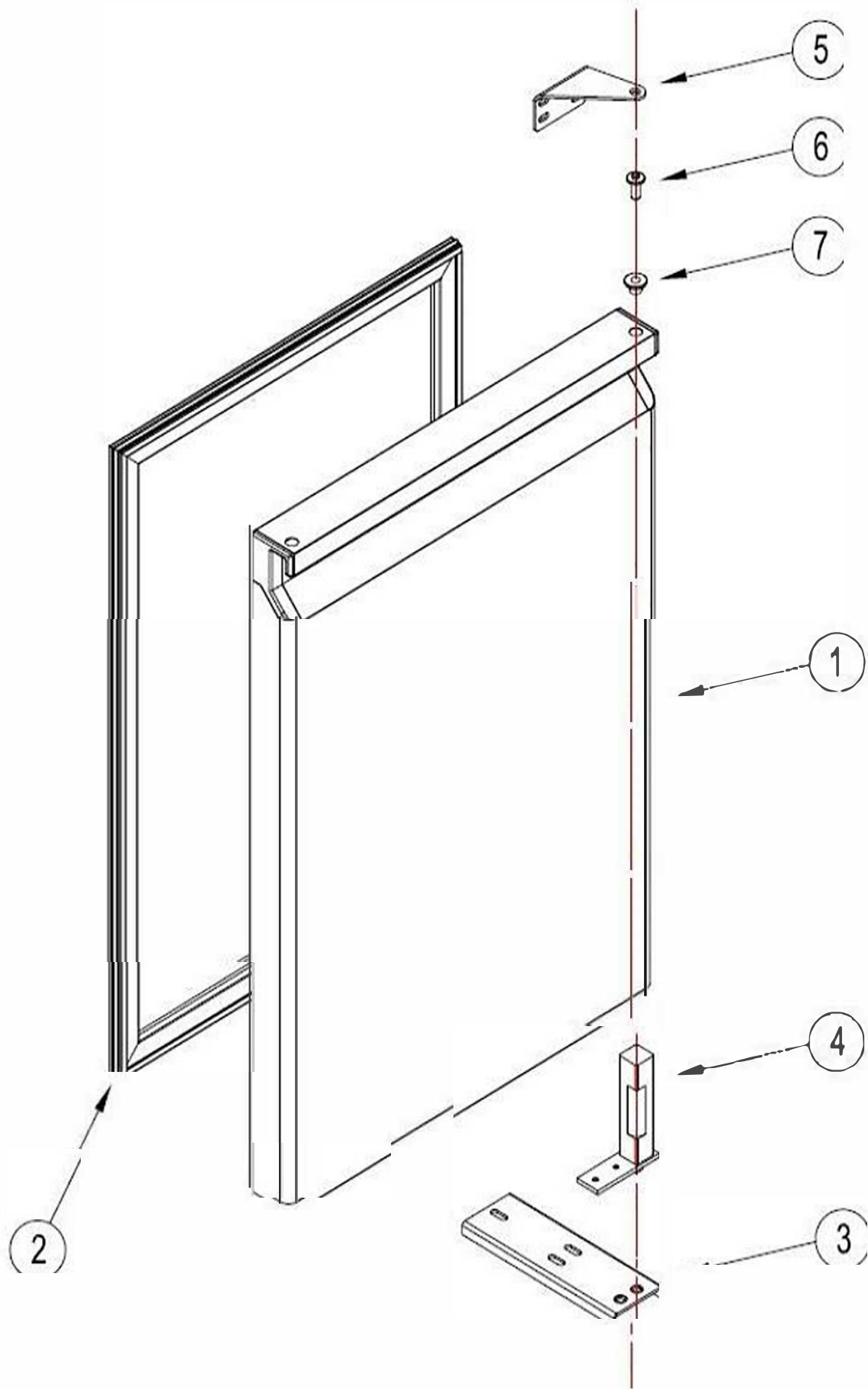
## ACCESORIES AND CONTROL SWITCHES

Digital Thermometer	: Digital Thermometer
Energy Lamp	: Ad / PCC1
Power Switch	: Ad / PCS1
Hinges Group	: Ad / PCS2
Stand	: Ad/PCS 5 Paslanmaz Ayak / + stainlies Steel Stand
Shelf	:4 Unts Plastic Coated Shelf

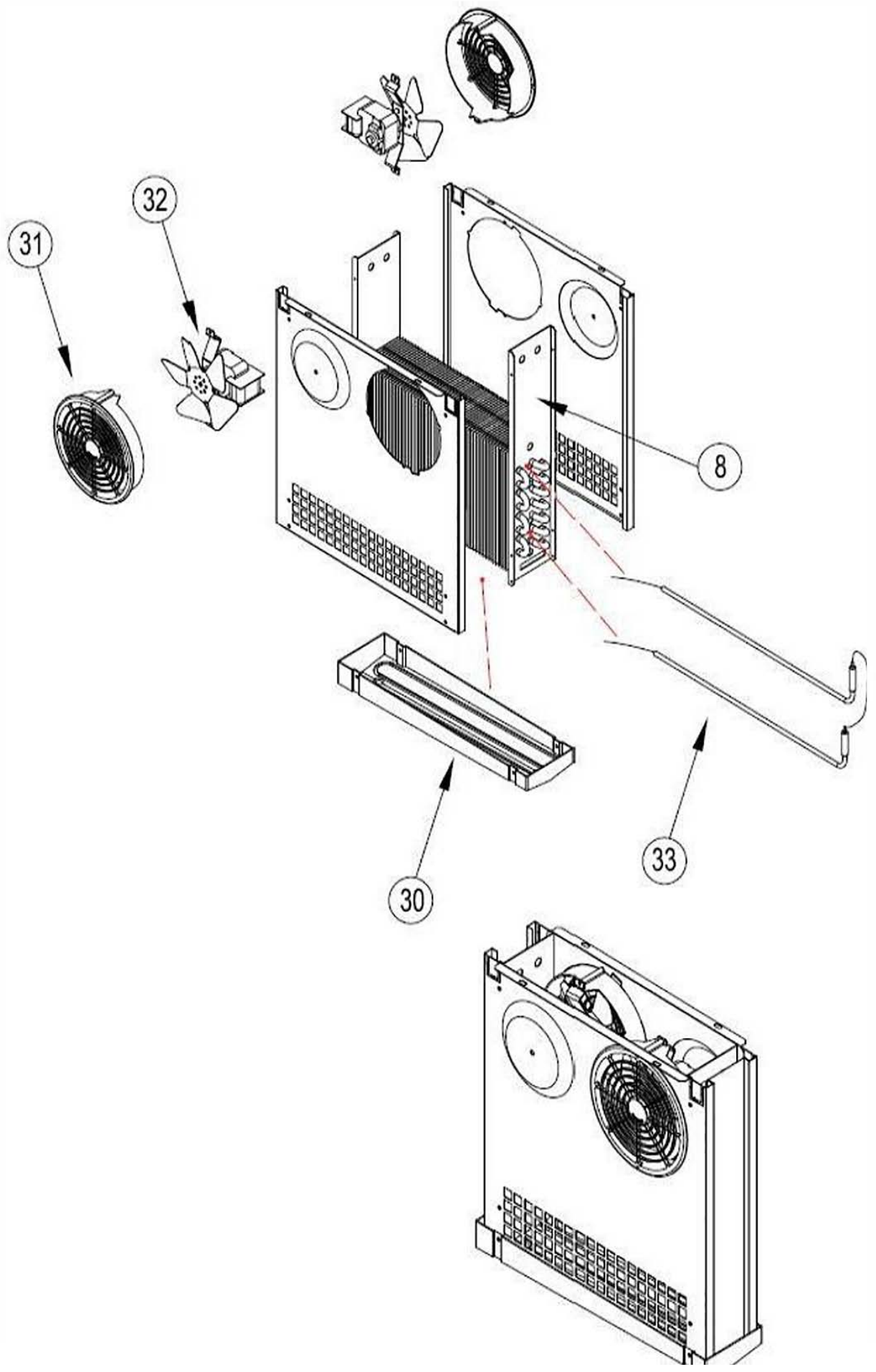
## TECHNICAL CHARACTERISTICS

Outside Dimensions	:1210X700X1325mm
Inside Dimensions	:1100X575X640mm
Package Dimensions	:1310X800X1430mm
Inside Volume	: 330 lt + 9ADET GN1/6
Gross Weight	: 155 kg
Net Weigt	: 135 kg
Outside Body	: 0,60 mm I NOX 430 SB+PVC
Inside Body	: 0,50 mm I NOX 430 MAT+PVC
Insulation Metarial Thicnes : 50 mm	
Insulation Metarial Volume : 42 Kg / m3 +/-1	
Compresor	: EMT-6160 Z
Condanser	: 1/4 Hp Davlumbazlı kondanser
Condanser Fan	: 16/68W 15002SGFA01
Evaporatör	: NTV tip evap / NTV type evap
Evaporatör Fan	: 13/37W - 2A 230V 50/60HZ
Dryer	: 30 gr 15002SGDR02 Çift Girişili
refrigerator Gas	:R290
Ref. Gas Quantity	:80gr
Certifications	: TS 2225 EN 60335-2-4' ye uygundur.
Serial No	: Ambalajlı Halde Okunacak Şekilde Uygun Yere Yazılır / Packed And Easy Read
Packing	: Alta Tahta Palet, Karton ve Havalı Naylon İçinde / Wooden Palet İs Down And Covered
Qualty Time	: Kullanım Noktasına Ulaşımından İtibaren İmalat Hatalarına Karşı 2 Yıl. Her Ürün İle Garanti Belgesi ve Yetkili Servis Listesi Mevcuttur. / 2 Years After arriving the end user point. Warranty Certicate and User Manuel With the Unit.





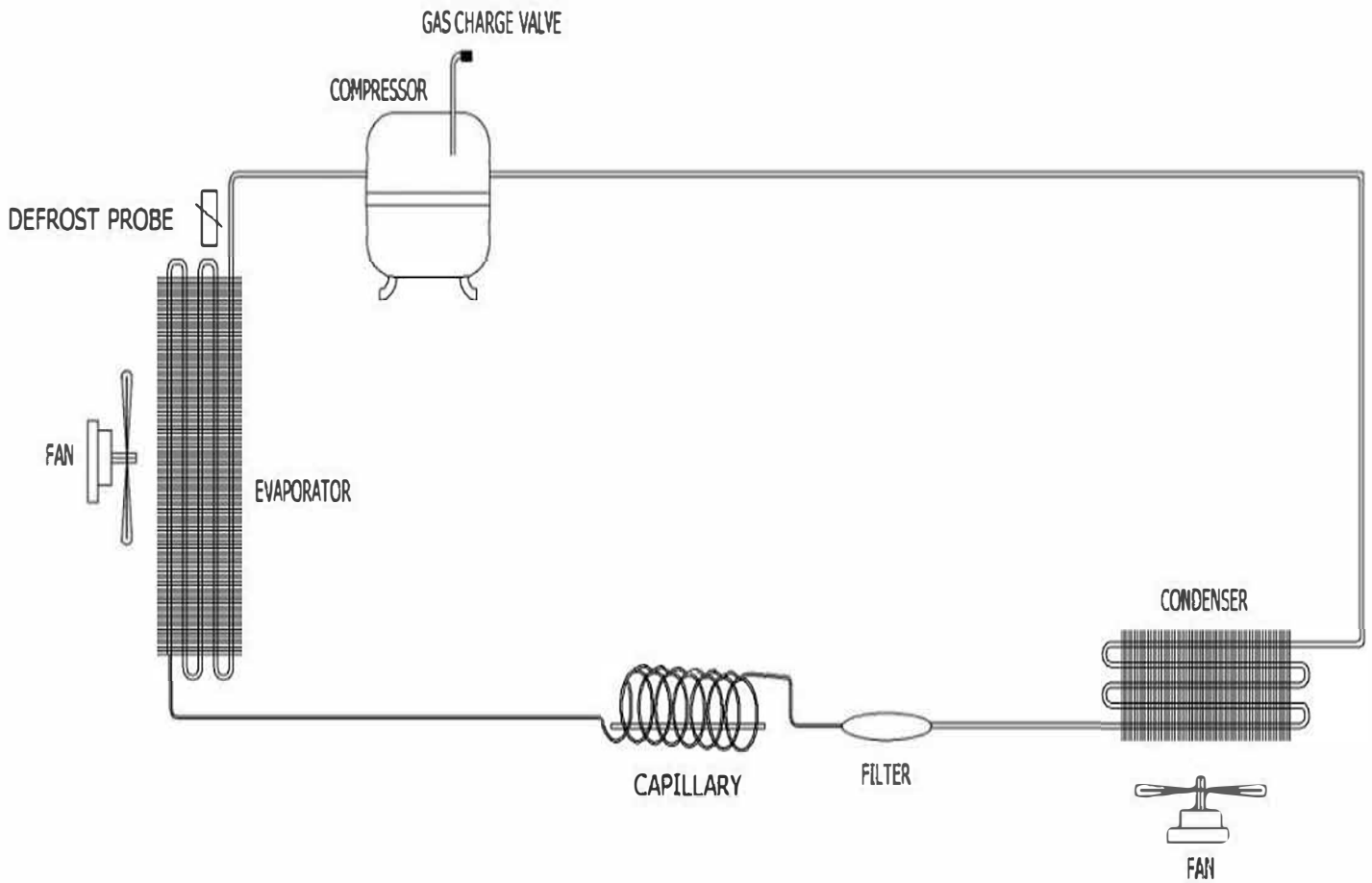
COUNTER TYPE REFRIGERATORS - DOOR DETIAL



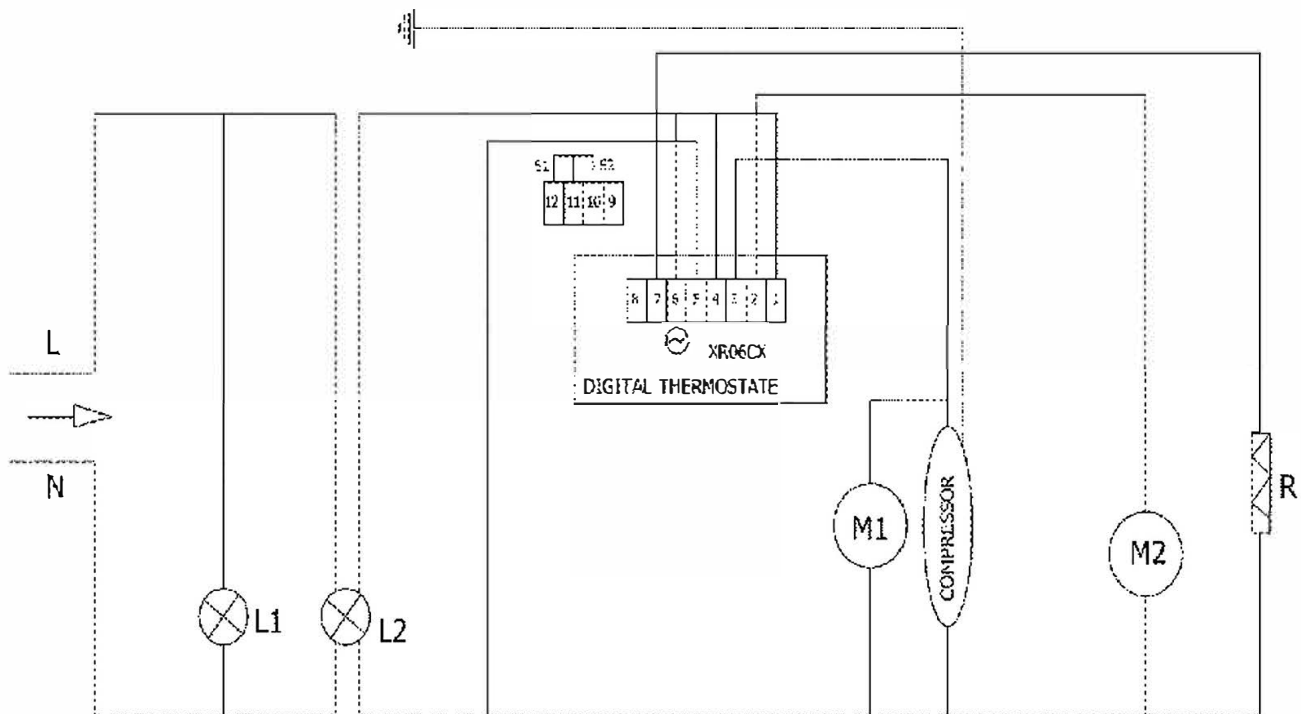
## SPARE PART LIST

NO	PART NAME	ADET QTY
1	DOOR	2
2	DOOR GASKET	2
3	LOWER HINGE BRACKET	2
4	UPRIGHT HINGE AND PARTS	2
5	UPPER HINGE	2
6	UPPER HINGE PIN	2
7	HINGE PLASTIC BUSHING	2
8	EVAPORATOR	1
9	SHELF-CGN 530X333	2
10	SHELF GUIDE - CGN 530mm	4
11	SHELF STANDARD - BACK	4
12	SHELF STANDARD - FRONT	2
13	SHELF STANDARD - MIDDLE	2
14	CANOPY	1
15	MAGNETIC HINGES	2
16	COMPRESSOR WATER PAN	1
17	CONDENSER FAN MOTOR	1
18	DIGITAL LABEL	1
19	PROBE COVER	1
20	COMPRESSOR - NEK6181-U	1
21	GLASS CONNECTING SCREW KIT	6
22	DRYER	1
23	CONDENSER	1
24	DIGITAL THERMOSTAT TWO PROPE(DIXELL)	1
24	DIGITAL THERMOSTAT TWO PROPE (EVCO)	1
24	MOTHERBOARD (DIXELL)	1
24	MOTHERBOARD FRONT PANEL (DIXELL)	1
24	MOTHERBOARD (ELIWELL)	1
24	MOTHERBOARD FRONT PANEL (ELIWELL)	1
	TOUCH CONTROLLER	1
	WATER PROOF CONTROLLER	1
25	POWER SWITCH	1
26	ON - OFF SWITCH	1
27	PROBE	1
28	CANOPY HINGE	1
29	GLASS CONNECTING LEGS	6
30	EVAPORATOR WATER PAN	1
31	PLASTIC FAN PROTECTION	2
32	EVAP FAN MOTOR	2
33	200W RESISTANCE	1
34	PLUG CABLE	1
35	BACK SIDE GLASS - KMN2	1
36	SIDE GLASS - KMN	2
37	UPPER SIDE GLASS - KMN2	1
38	PROBE	1
39	WHEEL WITHOUT BRAKE	3
40	WHEEL WITH BRAKE	2





## HORIZONTAL REFRIGERATORS NORMAL ELECTRICAL SCHEMA



XR06CX : DIGITAL THERMOSTAT  
M1 : CONDENSER FAN MOTOR  
M2 : EVAP FAN MOTOR  
S1 : ROOM PROB  
S2 : EVAPORATE PROB

L1 : POWER LAMP  
L2 : ON OFF LIGHT  
R : EVAPORATE RESISTANCE