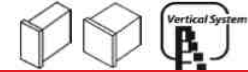




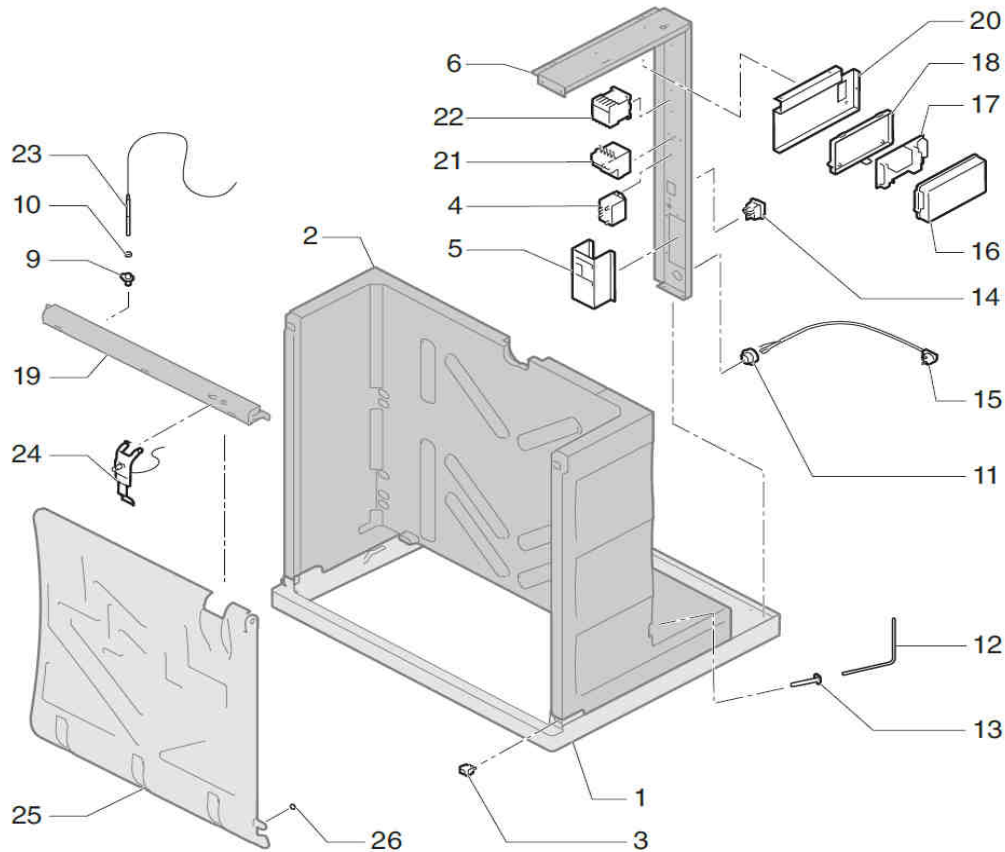




# ELECTRIC BOX

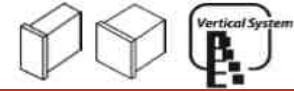


FD/HD

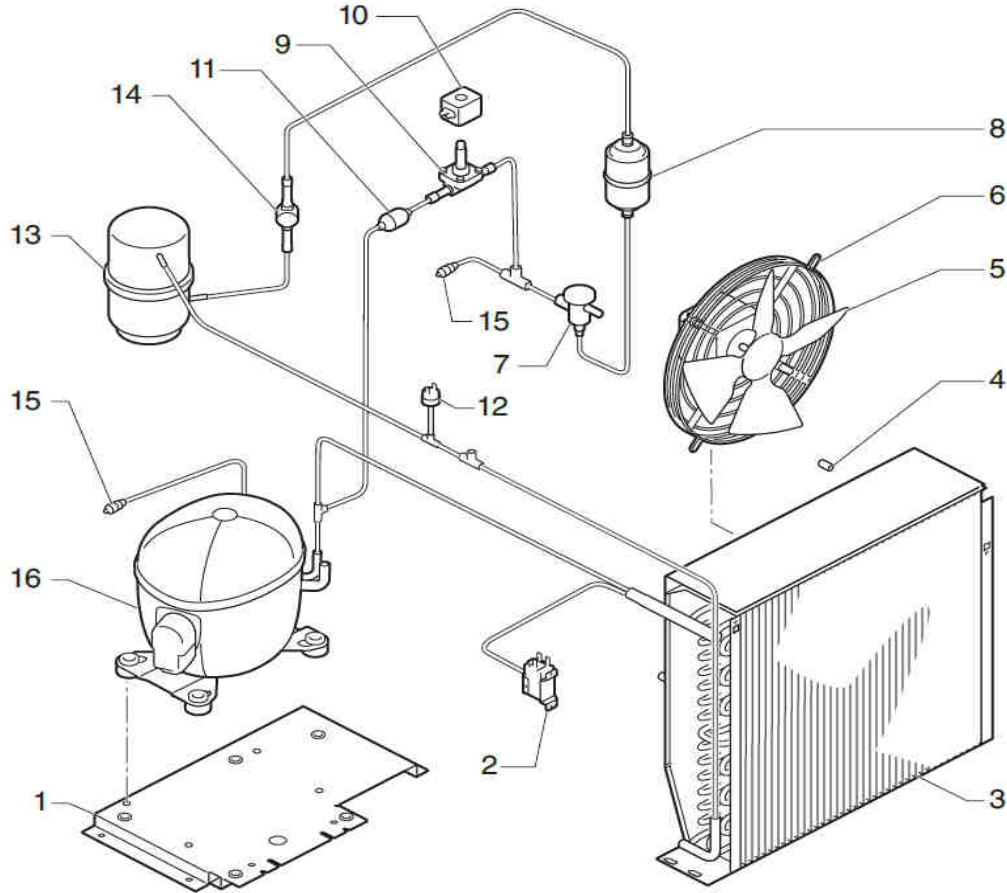


	DESCRIPTION	MODEL	
		FD/HD 215	FD/HD 415
1			
2			
3	SWITCH (ICE-OFF-WASH)	6161	6161
4	STARTER RELAY 220V	296	296
5	ELECTRICAL BO! (3 PHASE)	-	6322
6	RI""HT BRID""E	6319	6320
9	LEVEL PROBE BRAC#ET	670	670
10	CO\$PRESSIN"" RIN""	%04	%04
11	CABLE RESTRAINT	4907	4907
12	CURTAIN PROBE	6%21	6%21
13	CURTAIN PROBE BLOC#	671	671
14	ON&OFF SIWTCH	22 7	22 7
15	ELECTRIC SUPPLY WIRE 220V&%0-60H'	40	2124
15	ELECTRIC SUPPLY WIRE 220V&60H'	-	367%
16	ELECTRIC BO! COVER	30 61	30 61
16	ELECTRONIC BOARD 220V&%0-60H'	62%2A	62%2A
17	ELECTRONIC BOARD BEFORE S&N 177364 0	30922	30922
18	ELECTRIC BO!	21 1	21 1
19	DISTRIBUTOR COVER	30039	30039
20	ELECTRIC BO! BRAC#ET	613	613
21	THER\$AL RELAY (3 PHASE)	-	3022
22	CONTACTOR (3 PHASE)	-	%36
23	WATER LEVEL PROBE	309 2	309 2
24	THIC#NESS ICE PROBE	6334	6334
25	CURTAIN	60 1	60 0
26	\$A"" NET	6179	6179

# AIR CONDENSER

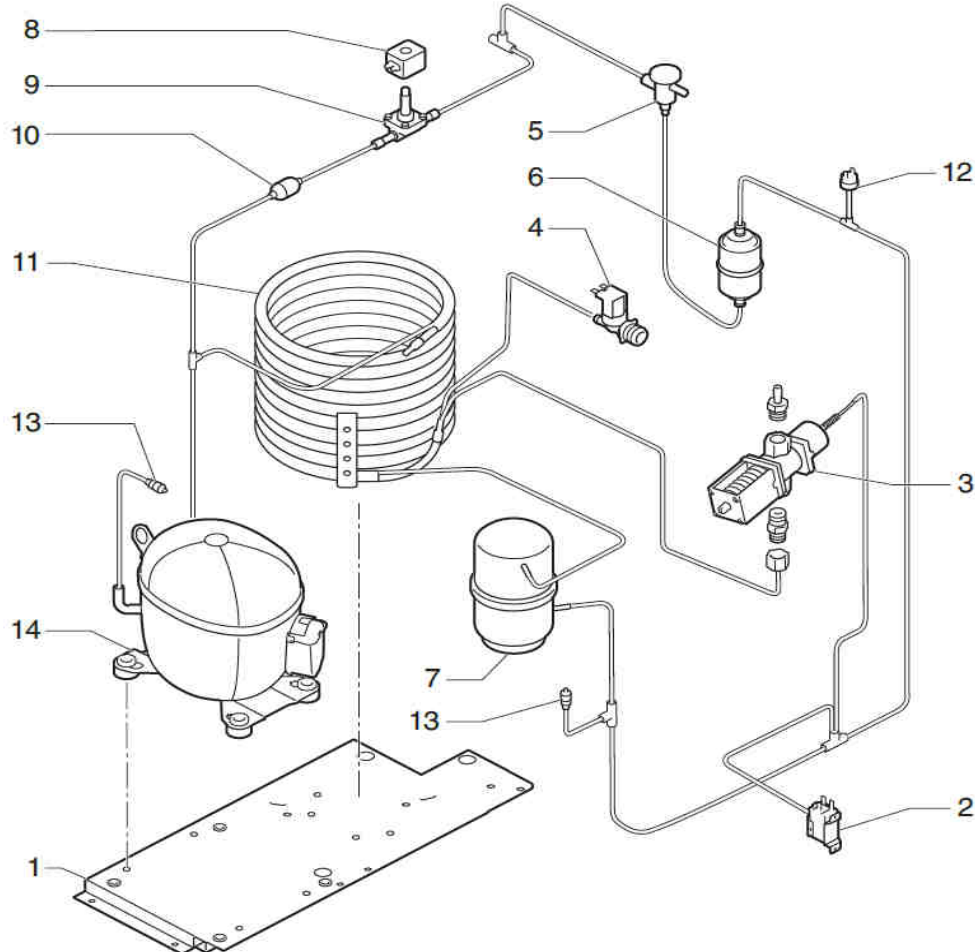


FD/HD



	DESCRIPTION	MODEL		
		FD/HD 215	FD/HD 415	
1	BASE PLATE	6326	6326	
2	CONDENSATION PRESSURE SWITCH	2507	2507	
3	AIR CONDENSER	6156	6157	
4	FAN BLADE SUPPORT	6500	6501	
5	FAN BLADE 220/380V 50HZ	4994	6557	
	FAN BLADE 203-230V/3ph/60HZ	-	6398	
6	FAN BLADE 220V/50-60HZ	3077	2446	
	FAN BLADE 203-230V/3ph/60HZ	-	4894	
7	EXPANSION VALVE	1035	1035	
8	DRIER FILTER	2560	2560	
9	HOT GAS VALVE	6396	843	
10	COIL 220V/50-60HZ	5173	5173	
12	HIGH PRESSURE SWITCH	334	334	
13	PRESSURE TANK (UNLISTED MODELS)	6241	6241	
14	SIGHT (UNLISTED MODELS)	336	336	
15	LOAD VALVE	335	335	
	COMPRESSOR			
		220V/50HZ	6008	8450
16		220V/60HZ	31099	8304
		220V/60HZ/3PH	-	6569
		380V/50HZ/3PH	-	3214

# WATER CONDENSER



	DESCRIPTION	MODEL	
		FD/HD 215	FD/HD 415
1	PLATE BASE	6326	6326
2	CONDENSATION PRESSURE SWITCH	2507	-
3	PRESSURE SWITCH VALVE	-	425
4	WATER VALVE 220V/50-60HZ	6183	6183
5	EXPANSION VALVE	1035	1035
6	DRIER FILTER	2560	2560
7	PRESSURE TANK	6241	6241
8	HOT GAS VALVE	6396	843
9	COIL 220V/50-60HZ	5173	5173
11	WATER CONDENSER	5246	3268
12	HIGH PRESSURE SWITCH	334	334
13	LOAD VALVE	335	335
14	COMPRESSOR		
	220V/50HZ	6008	8450
	220V/60HZ	31099	8304
	220V/60HZ/3PH	-	6569
	380V/50HZ/3PH	-	3214