



CUPBOARD TYPE
REFRIGERATOR INSTRUCTIONS
MANUAL

ggmgastro



CUPBOARD TYPE REFRIGERATOR INSTRUCTIONS MANUAL FOR USERS AND MAINTENANCE

CONTENTS

1	INSTALLATION	2
	1.A Locating.....	2
	1.B Cleaning.....	2
	1.C General.....	3
	1.D Labels.....	4
	1.E Operation.....	6
2	USING THE REFRIGERATOR	7
	2.A Precautions.....	8
	2.B Limits.....	8
	2.C Recommendations.....	8
3	MAINTENANCE	9
	3.A Inspection.....	9
	3.B Special Maintenance.....	9
	3.C Cleaning which can be performed by the User.....	10

INTRODUCTION

COOLING MAINTENANCE ENDURANCE TESTS

The Cupboard type Refrigerator which you have purchased is at your service to provide you all you may need after obtaining approval following special quality control and endurance tests conducted by the specialized personnel.

Note: The images in the manual are for example purposes only and they not be identical to your model.

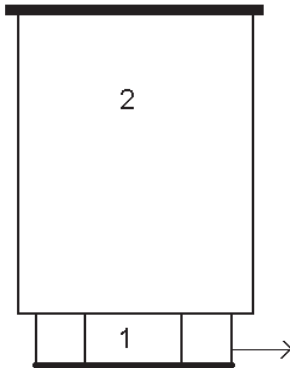
INSTALLATION

1.A LOCATING

TEAR THE PACKAGING COVERING THE PRODUCT EXCLUDING THE PART UNDER IT AND ABOVE THE PALETTE. In order to make sure that the cupboard type refrigerator is at balance, it should be lifted via a forklift or bearing panel and place it to where it is desired to be located. Make sure that the area where the Cupboard type Refrigerator is to be placed is clean and open to prevent suction of materials by the cooler section of the product and such materials being collected inside the condenser thus diminishing the system performance.

After locating the Cupboard type Refrigerator, the adjustable Inox feet can be adjusted by turning it inside or outside.

Remove the protection film of the Cupboard type Refrigerator by a blunt object which is not cutter..



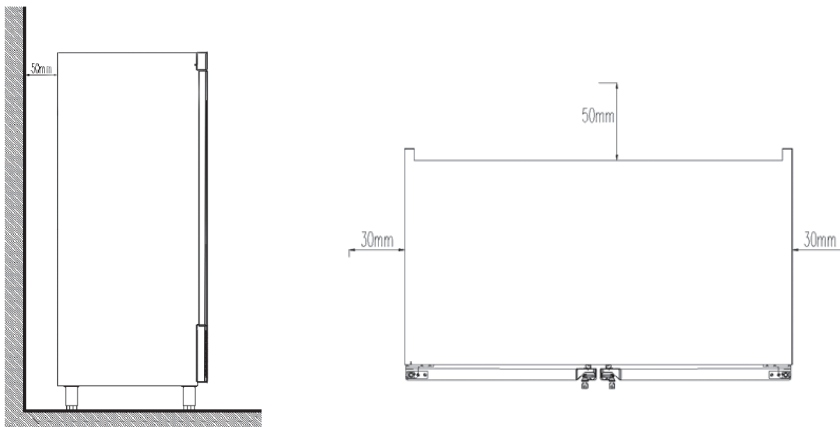
1: Removable Screw section

2: Feet section

In order to increase the height of your cupboard type refrigerator, revolve it by revolving active o'clock direction.



DISTANCES FOR LOCATING THE CUPBOARD TYPE REFRIGERATOR



1.A CLEANING

After locating the Cupboard type Refrigerator as we desire, we need to clean it as we desire. The initial cleaning will be made by water and detergent which does not include chlorine. The accessories may be placed as desired after cleaning and drying the product. We recommend you to clean the Cupboard type Refrigerator on a daily basis in the manner suitable to clean stainless steel.

Abrasive chlorine- Acid based cleaning products should not be used. Avoid from cleaning by cleaning with water directly.

1.B GENERAL

Before plugging in the vertical type of refrigerator, verify that the voltage and frequency conforms to the values stipulated in the warning labels of the device.

The electricity system should be plugged to grounding plug so as to ensure protection of magneto thermal key and differential.

Check that the electricity partition is suitable for the consumption to be made.

The cable of the refrigerator should have 4,8mm input and grounded plug and Schuko type or F type (named as EEC 7-4") plug.

It is forbidden that the cable should be prohibited and extended due to safety reasons.

Do not place any foreign materials into the ventilation protection or cooling system area.

It is obliged that a connecting pipe should be available to the local system or the recycling system accompanied by the condenser Apply for the required regulations for each country.

The floor where the refrigerator is to be located and installed on should be plain and straight which is an obligation for its performance.

Make sure that there are no other heat sources around the refrigerator.

In order for the components which the refrigerator consists of to give full performance, the air inlets inside the refrigerator should prevent air intake.

Do not install your cupboard type refrigerator in open areas.

CONSUMPTION TABLE FOR THE REFRIGERATOR

POSITIVE CUPBOARDS	POWER VOLTAGE	PHASE	CURRENT (A)	CONSUMPTION (W)	POWER CORD	FUSE	DIFFERENTIAL (A) DEVICE
KND700	TENSION 230V 50/60 Hz	1+N	1,6	368	3x1.mm ²	10A	30mA

1.C LABELS

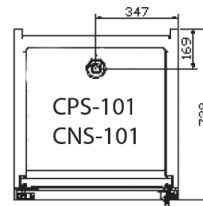
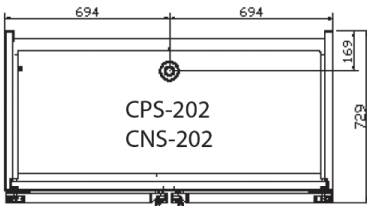
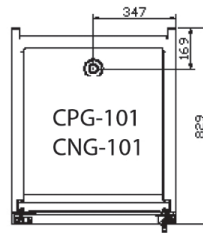
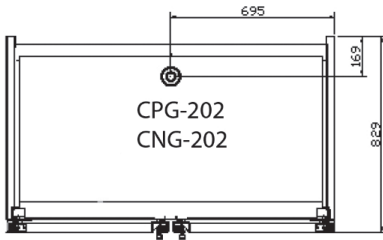
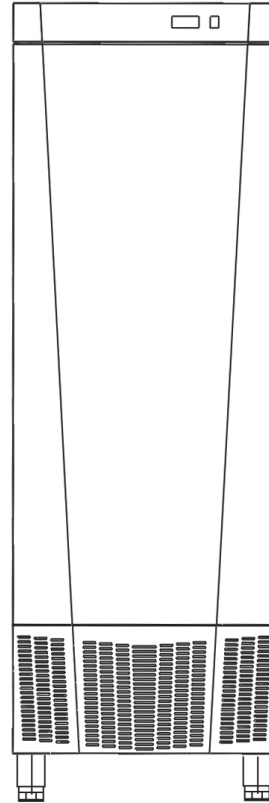
The explanation for the labels inside your refrigerator is as follows.

NUMBER	EXPLANATION
1	MANUFACTURING
2	YEAR OF
3	MODEL
4	SERIAL NO
5	CLIMATE GROUP
6	COOLING CAPACITY
7	TYPE OF GAS
8	CURRENT
9	LIGHTNING
10	CURRENT FUSE
11	ELECTRICAL DIAGRAM REF. NO.

1	IMALAT YILI 2010	CE	Made in TÜRKİYE
2	MODEL	100102020101	
3	MODEL		
4	SERİ NO 08100106	AYDINLATMA 9	LAMP ABSORTION 8 Watt
5	EKİPMAN H	İKLİM GRUBU N	EQUIPMENT H
6	SOGUTMA 465	CALISMA -2/+8 C	REFRIGERATION CAPACITY 465
7	SOGUTUCU GAZ R-134a	KONDANSASY V	REFRIGERANT GAS 370 Gr
8	VOLTAJ V 220/230	NOMİNAL GÜC W	VOLTAGE Hz 50/60
10	AKİM Amax 2.7	ELK.DEV.SEMA No IND01	INTENSITY Wmax 312
11	ELK.DEV.SEMA No IND01		WIRING NO IND01
8	SİGORTA AKİMİ A		FUSE CURRENT A

SNACK, GASTRO AND PASTISERIA EXTERIOR DIMENSIONS AND WATER DISCHARGE OUTLETS OF CUPBOARD TYPE OF REFRIGERATORS (MM)

MODEL	DIMENSIONS		
PATISSERIA	LENGTH	WIDTH	HEIGHT
KND700	710	910	2100



1.E Operating the Cupboard Type Refrigerator

- After completion of interior cleaning of the refrigerator, and placing it to the desired position, connect it to the electrical circuit and immediately after you adjust the power indicator to 1, or cupboards starts working.
- The temperature displayed by the thermostat shows the interior temperature of the cupboard.
- The thermostat is activated within 2 minutes after it is connected to the electrical circuit of the cupboard type refrigerator.
- The temperature displayed by the thermostat after the refrigerator starting its operation is the initial temperature of the cupboard. This number will change into the desired temperature as the door is in closed position.
- The temperature of the cupboard type refrigerator needs to increase to the desired temperature before placing any products into it.

Thermostat and control panel

Heat Indicator



Thermostat

2. USING THE CUPBOARD TYPE REFRIGERATOR

Cupboard type refrigerator was designed with the purpose to preserve the foodstuff and beverages in the best way possible.

We recommend that hot foodstuff and containers, chemical materials or products containing abrasives and medicines not to be put into the refrigerator and to use the refrigerator based on its purpose.

We may determine the different categories for the use of cupboard type refrigerator based on different temperatures.

<p>POSITIVE Between -2 and +8C</p>	<p>Designed to protect and preserve the freshness of the foodstuff and beverages</p>
<p>NEGATIVE Between -18 and -22C</p>	<p>Designed to protect the products which have previously been shocked</p>

2.A Recommendations

- 1) Avoid using your refrigerator to cool the extremely hot products to obtain the optimum performance from your refrigerator.
- 2) Let's avoid keeping the doors of your refrigerator for long periods of time.
- 3) Avoid filling the refrigerator in the way to exceed its loading limits. ▼————▼
- 4) We should open the doors as rarely as you can so as to prevent the foods to reach critical stages after power failures or electricity cut offs for more than 20 minutes..

CUPBOARD TYPE	MINIMUM TEMPERATURE OF THE PRODUCT
POSITIVE	+8 C
NEGATIVE	-18 C

2.B Precautions

- 1) Never lean onto the refrigerator when its doors are open; this is strictly prohibited.
- 2) Do not approach the refrigerator without shoes when the floors are wet or with wet hands.

2.C Limits

ENVIRONMENT	LIMITS
Room Temperature	+32
Temperature of the Condenser	+54
Relative Humidity	60%

3-MAINTENANCE

We would like to give you as well as the technical assistance personnel instructions to ensure most efficient and trouble free and life long operating of the cupboard type refrigerator .

We will mention practical and quick inspection of the machine before contacting the service as well as cleaning issues which we believe that it will be useful.

3.A CLEANING TO BE PERFORMED BY THE USER

Before any cleaning, the electrical connection of the device must be cut off and the power indicator must be adjusted to **OFF** or **O**.

In cupboard type refrigerators, discharge pipes are available for cleaning and possible flow of liquids. In order to prevent that it is blocked with solid wastes, the cap of the pipe must be removed during cleaning and it needs to be cleaned. It also prevents the wastes to be transformed into solid state.

3.B INSPECTION OF THE MACHINE

It is possible for you to inspect your cupboard type refrigerator before you contact with your service. The failures which may occur in some cases are simple and they can be solved by the user.

1) The Cooler doesn't work

- By controlling that the power indicators operates or not, check if the cupboard type refrigerator receives the electricity.

2) Temperature too High

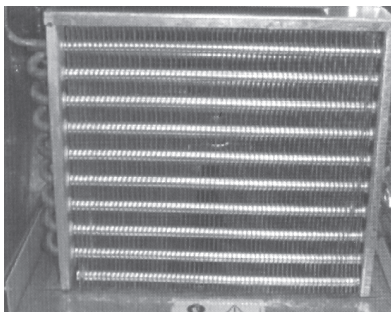
- Check if there are any sources of heat in the surrounding area.
- Check if the thermostat was cut off between 0°C and -18°C. Press set button on your thermostat once and release the button.



- Control if the room temperature is higher than +32°C which is the maximum operating temperature of the device, otherwise you need to select the "tropical heat "option.

- Make sure that the materials inside were not placed in such a way so as to prevent ventilation of the materials inside and the ventilation is inside and active to ensure cooling.

- Make sure that the condenser is clean : remember that the cooler especially the grills of the condenser needs to be clean to provide efficient energy saving. The frequency of cleaning depends on the properties of use.



Clean condenser

3) If any unusual sounds are heard

- Check the balance of the unit and ensure that the doors have been properly closed.
- Make sure that no objects touch the dismantlable components of the cooler.

3.C SPECIAL MAINTENANCE

- Cleaning the Condenser: Try not to bend the aluminum grills of the condenser, otherwise air will not be allowed to pass and condensation will be prevented in which case the service guarantee will be rendered null and void.
- Make sure that the condenser temperature is not higher than what is determined inside the refrigerator.
- Insufficient ventilation will render the service guarantee null and void.
- Ensure that the doors are properly closed.
- Do not dismantle the components unless you turn off the product.
- In order to prevent some components from burning due to high temperature, take the required precautions while you approach the condenser unit.
- If the flexible power cable is damaged, it needs to be replaced with the manufacturer, after sales service or the authorized technical personnel.
- In case of replacement, the grounded cap needs to be relocated.

