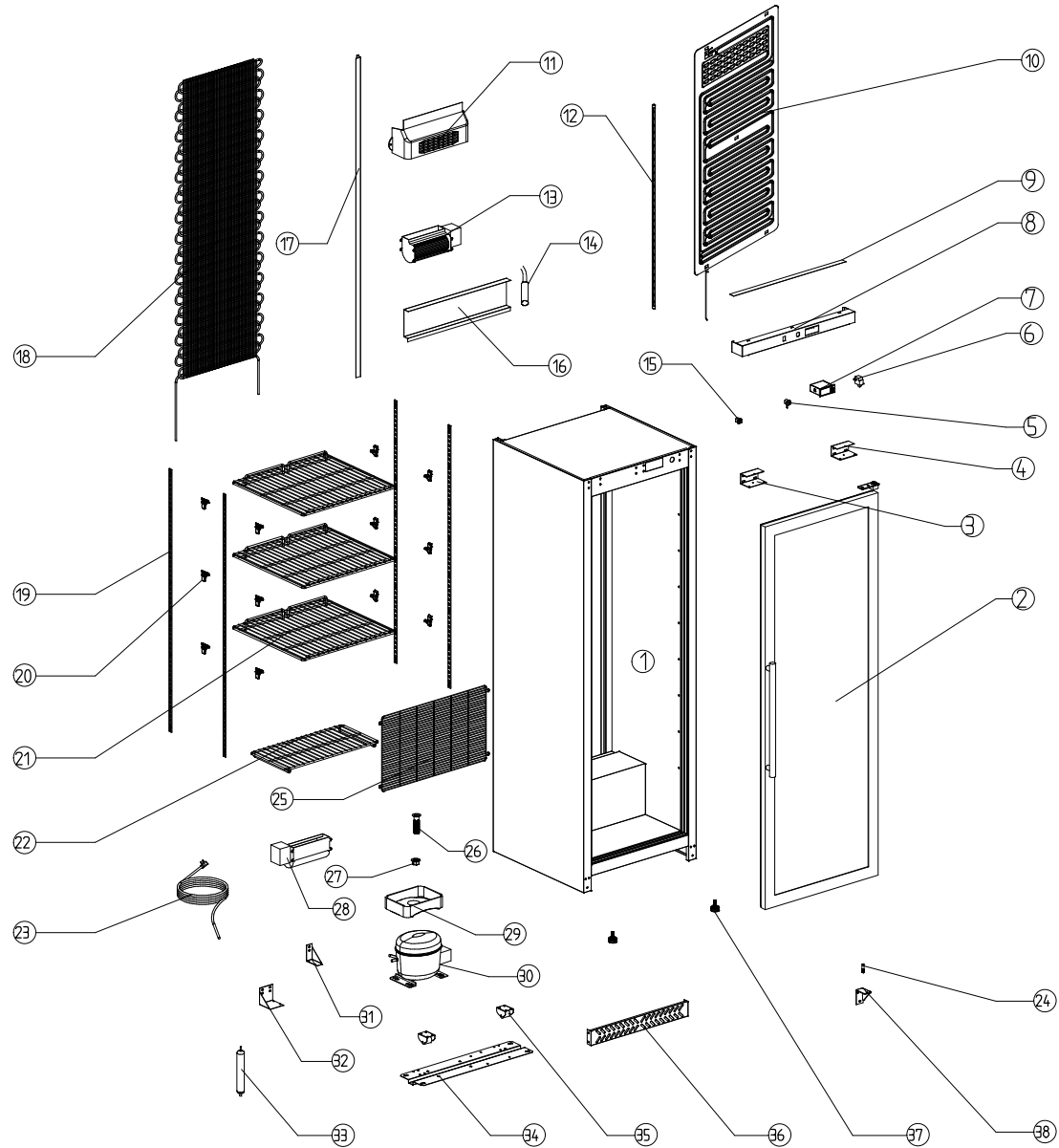


SR60GS Exploded Drawing



KSS600GN (SR60GS) Spare parts list

| S/N | Number | NAME | UNIT | QTY |
|-----|------------------|-------------------|------|-----|
| 1 | SKC-0-000-2043-0 | BODY | SET | 1 |
| 2 | SKC-2-150-0190-0 | DOOR | SET | 1 |
| 3 | SKC-2-006-0621-0 | lock hook | | 1 |
| 4 | SKC-2-006-0620-0 | HINGE-UP | | 1 |
| 5 | SKC-2-170-0081-0 | lock | PCS | 1 |
| 6 | SKC-4-050-0005-0 | DOOR SWICHT | PCS | 1 |
| 7 | SKC-4-030-0002-0 | thermostat | PCS | 1 |
| 8 | SKC-0-000-0732-0 | | PCS | 1 |
| 9 | SKC-2-110-0353-0 | DOOR HINGE AXIS | PCS | 2 |
| 10 | SKC-2-101-0049-0 | evaporator | PCS | 1 |
| 11 | SKC-2-110-0637-0 | FAN GUARD | PCS | 1 |
| 12 | SKC-4-050-0080-0 | LED LIGHT | PCS | 1 |
| 13 | SKC-4-001-0036-0 | FAN | PCS | 1 |
| 14 | SKC-4-030-0006-0 | SENSOR | PCS | 1 |
| 15 | SKA-4-050-0012-0 | SWICHT | PCS | 1 |
| 16 | SKC-2-006-2050-0 | back grill | PCS | 1 |
| 17 | SKC-2-006-0019-0 | convenient slot | PCS | 1 |
| 18 | SKC-2-102-0023-0 | CONDENSOR | PCS | 1 |
| 19 | SKC-9-000-0033-0 | SHELF HOOK | PCS | 4 |
| 20 | SKC-2-110-0625-0 | SHELF SUPPORT | PCS | 12 |
| 21 | SKC-2-120-0069-0 | SHELF | PCS | 3 |
| 22 | SKC-2-120-0039-0 | bottom shelf | PCS | 1 |
| 23 | SKC-4-010-0080-0 | power core | PCS | 1 |
| 24 | SKC-2-170-0211-0 | HINGE AXIS | PCS | 2 |
| 25 | SKC-2-120-0071-0 | unit room grill | PCS | 1 |
| 26 | SKC-2-110-0316-0 | drain pipe | PCS | 1 |
| 27 | SKC-2-110-0317-0 | drain pipe nut | PCS | 1 |
| 28 | SKC-4-001-0036-0 | FAN | PCS | 1 |
| 29 | SKC-2-110-0640-0 | WATER PAN | PCS | 1 |
| 30 | SKC-4-040-0160-0 | COMPRESSOR | PCS | 1 |
| 31 | SKC-2-002-0839-0 | FAN SUPPORT-LEFT | PCS | 1 |
| 32 | SKC-2-002-0840-0 | FAN SUPPORT-RIGHT | PCS | 1 |
| 33 | SKC-2-103-0001-0 | FILTER DRIER | PCS | 1 |
| 34 | SKC-2-001-2030-0 | UNIT BOARD | PCS | 1 |
| 35 | SKC-2-110-0638-0 | wheel | PCS | 2 |
| 36 | SKC-2-006-0833-0 | bottom panel | PCS | 1 |
| 37 | SKC-2-140-0008-0 | FEET | PCS | 2 |
| 38 | SKC-2-001-0494-0 | HINGE-BOTTOM | | 1 |