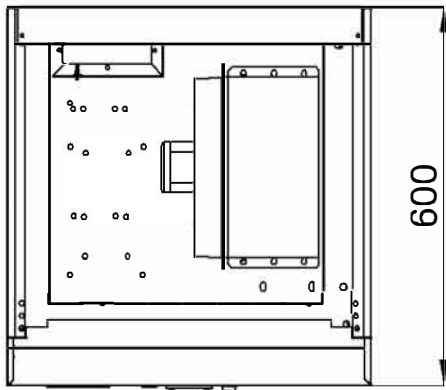
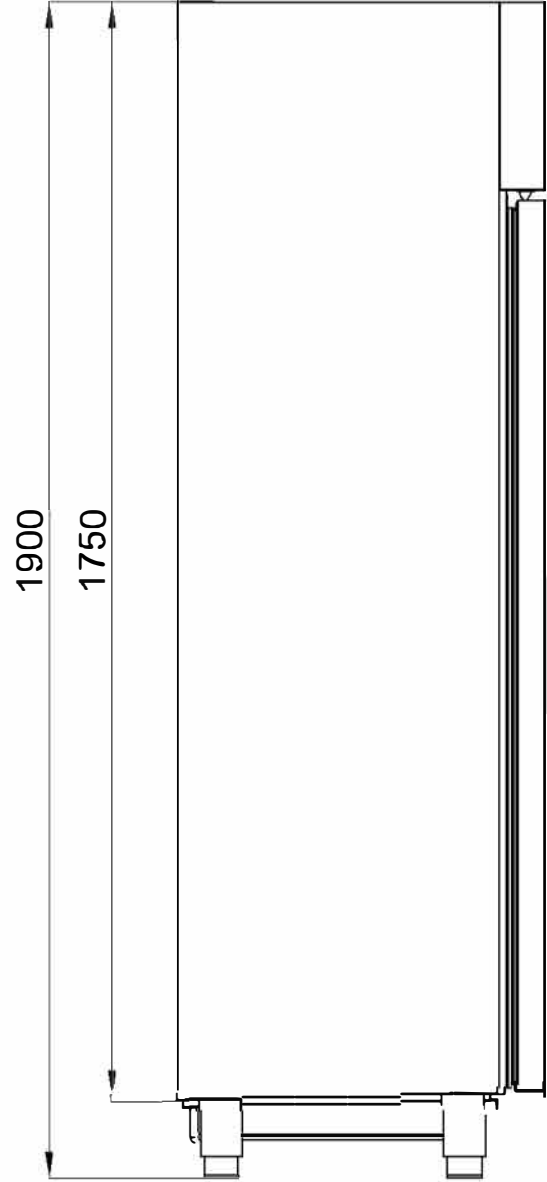
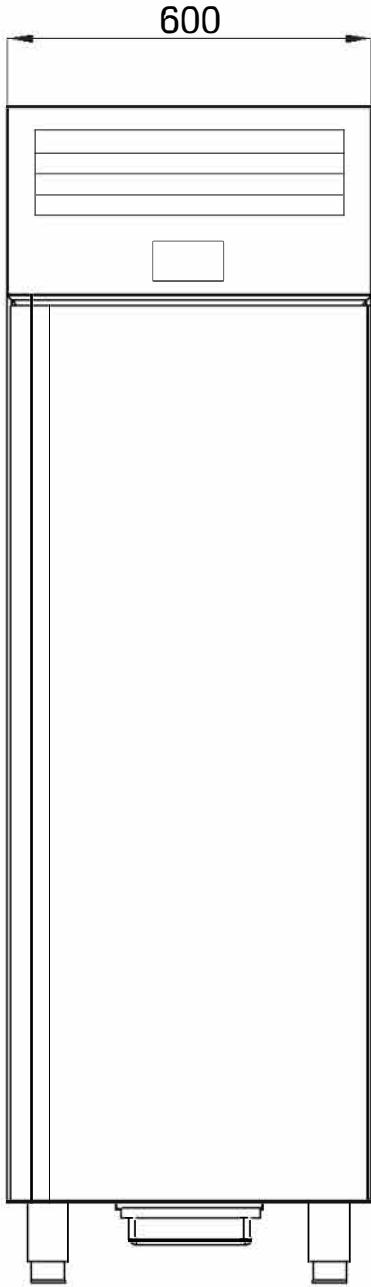


**DIK BUZDOLABI
MALZEME VE TEKNİK ÖZELLİKLER DOSYASI
MATERIAL AND TECHNICAL CHARACTERISTICS MANUEL**

İÇİNDEKİLER / INDEX :

- 1. KARAKTERİSTİK / CHARACTERISTICS**
- 2. İÇ VE DIŞ ÖLÇÜLER / INSIDE , OUTSIDE DIMENSIONS**
- 3. PATLAMIŞ RESİMLER / EXPLODED VIEW**
- 4. YEDEK PARÇA LİSTESİ / SPARE PART LIST**
- 5. GAZ VE ELEKTRİK ŞEMASI / GAS AND ELECTRICAL SCHEME**





DIŐ BOYUTLAR / OUTSIDE DIMENSIONS = 600X600X1900
İÇ BOYUTLAR / IN SIDE DIMENSIONS = 500X500X1230

RESİM ADI / TANIM:	RESİM NO	ÇİZEN	U.M.	ÖLÇEK	İ
	MALZEME	TARİH	mm	1:1	
	ÖLÇÜLER	KONTROL			

KARAKTERİSTİK ÖZELLİKLERİ / HARACTERISTIC SPECIALITIES

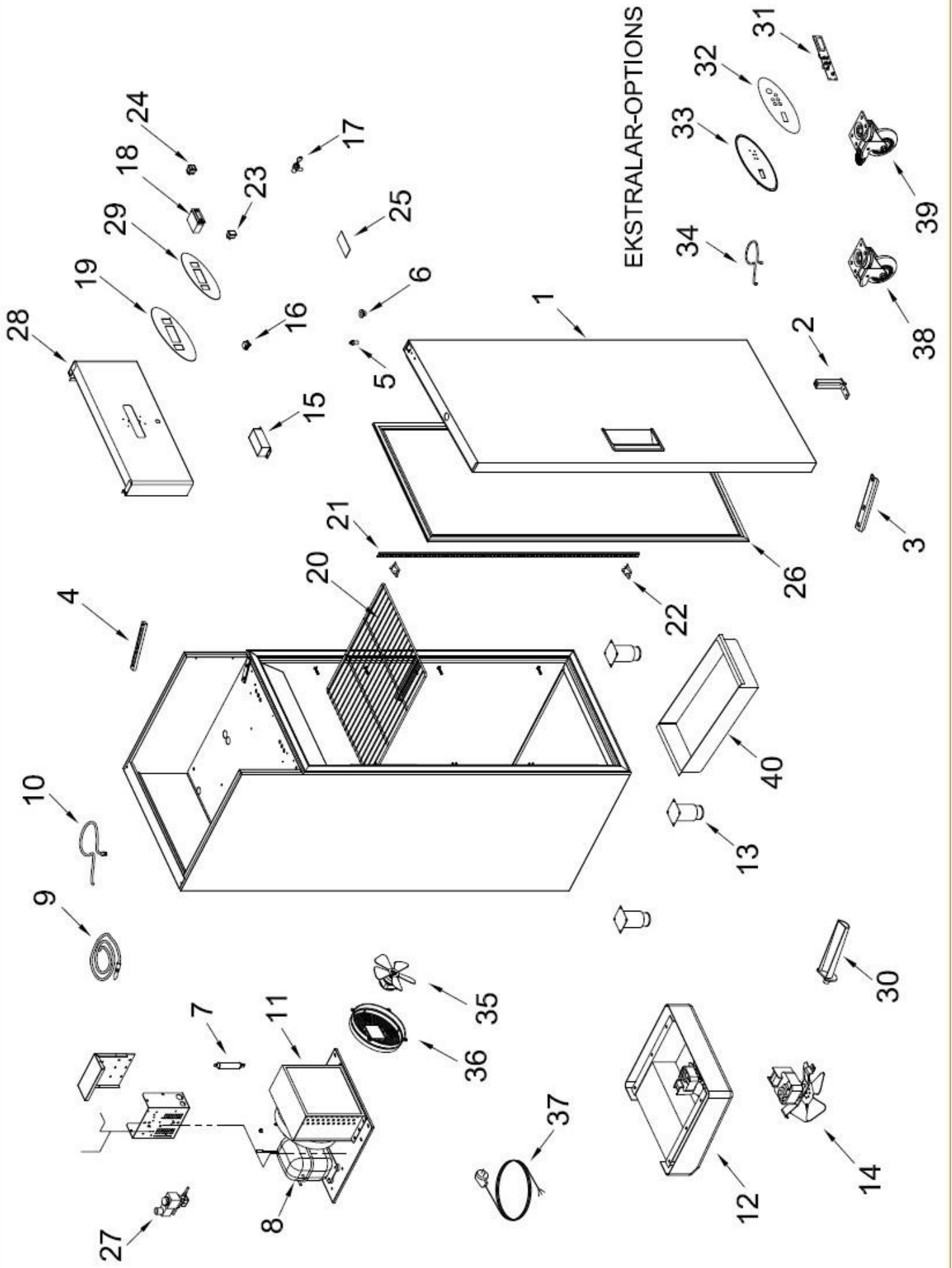
İklim Sınıfı / Climate Class	: G
Güvenlik Sınıfı / Safety Class	:1
Çalışma Sıcaklığı / Working Tempature C	:-2C / +8C
Termometer Set Sıcaklığı / Thermometer Set Tempature	:+1
Ortam Sıcaklığı / Environment Tempature	: +32C
Ortam Nem Oranı / Environment Moisture Propertion	: %65
Enerji Tüketimi / Energy Consuption	:0,13 KW/h
Güç / Power	:0,30 KW
Voltaj- Frekans / Voltage- Frekans	:220V / 50 Hz

AKSESUARLAR VE KONTROL LAMBALARI / ACCESORIES AND CONTROL SWITCHES

Dijital Termostat / Digital Thermometer	: Digital Thermometer
Enerji Lambası / Energy Lamp	: Ad / PCC 1
Açma Kapama Düğ PATLAMIS RESİMLER / EXPLODED	: Ad / PCS1
Menteşe Grubu / Hinges Group	: Ad / PCS1
Ayak / Stand	: Ad/PCS 4 Paslanmaz Ayak / + stainlies Steel Stand
Raf / shelf	:3Ad Plastik kaplı Raf/3 Unts Plastic Coated Shelf

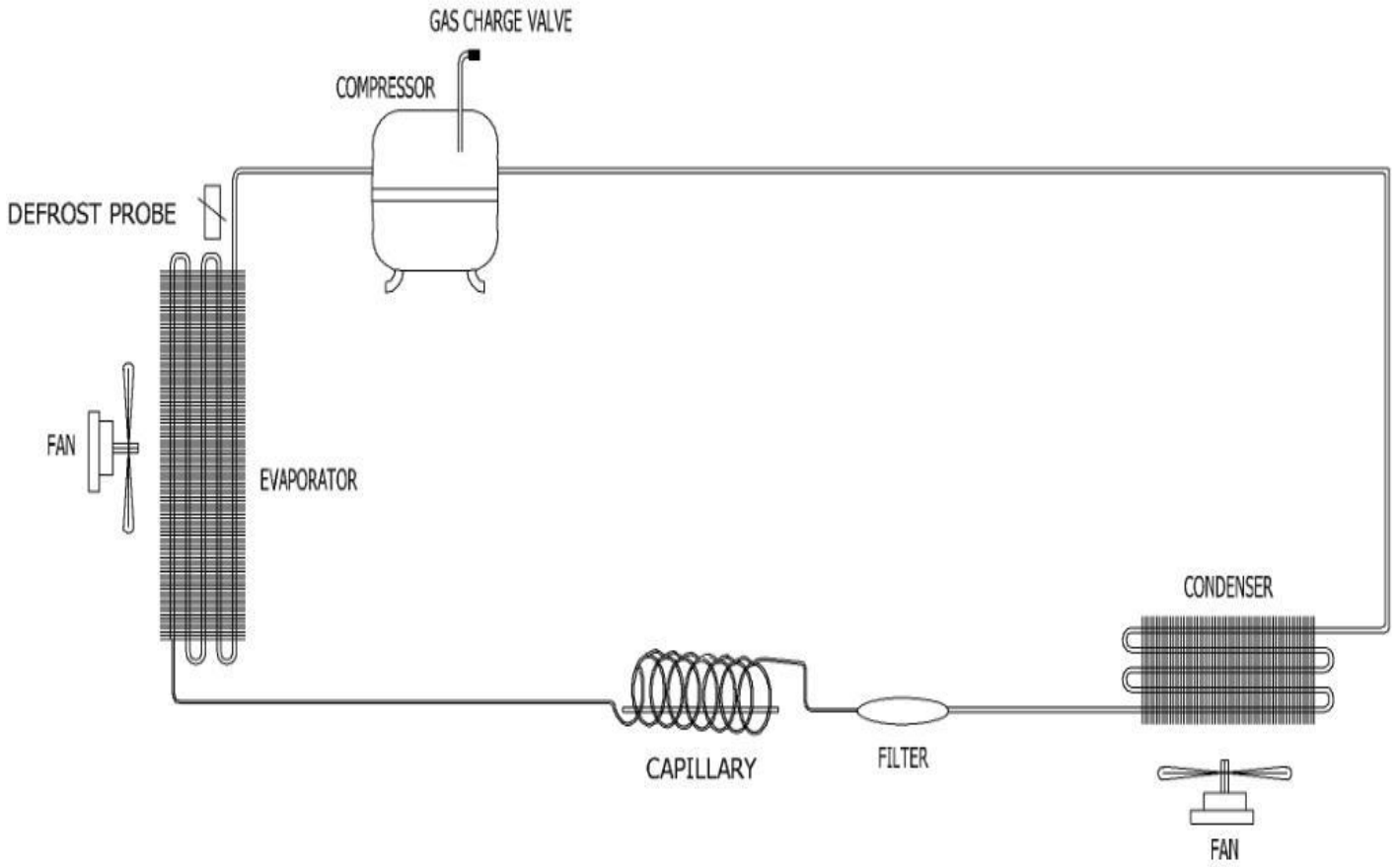
TEKNİK ÖZELLİKLER / TECHNICAL CHARACTERISTICS

Dış boyutlar / Outside Dimensions	: 600x600x1880mm
İç Boyutlar / Inside Dimensions	: 500x 500x1230mm
Ambalaj Boyutları / Package Dimensions	: 640x640x2050mm
İç Hacim / Inside Volume	: 400 lt
Brüt Ağırlık / Gross Weight	: 100 kg
Net Ağırlık / Net Weigt	: 90 kg
Dış Gövde / Outside Body	: 0,60 mm I NOX 430 SB+PVC
İç Gövde / Inside Body	: 0,50 mm I NOX 430 MAT+PVC
Yalıtım Maddesi / İnsulation Metarial	:RCC116DTF
Yalıtım Maddesi Kalınlığı / İnsulation Metarial Thicnes	:50 mm
Yalıtım Maddesi Yoğunluğu / İnsulation Metarial Volume	:42 Kg / m3 +/-1
Kompresör / Compresor	: EMT 6160 (1/4Hp)
Kondanser / Condanser	:1/4 Hp Davlumbazlı kondanser
Kondenser Fanı / Condanser Fan	:10/38W--0,23A--1300/1550 Rpm--230V
Evaporatör / Evaporator	:SHP6--(0,15kw)
Evaporatör Fan / Evaporatör Fan	: Coprel W5/2A--13/26W--230V-50/60Hz
Kurutucu Filtre / Dryer	:30 gr 15002SGDR02 Çift Girişili
Soğutucu Akışkan Gaz / refrigerator Gas	: R134A
Soğutucu Akışkan Miktarı / Ref. Gas Quantity	: 380 gr
Onaylar / Certifications	:TS 2225 EN 30335-2-4' ye uygundur.
Seri No / Serial No	:Ambalajlı Halde Okunacak Şekilde Uygun Yere Yazılır / Packed And Easy Read
Ambalaj / Packing	:Alta Tahta Palet, Karton ve Havalı Naylon İçinde / Wooden Palet İs Down And Covered
Garanti Süresi / Quality Time	:Kullanım Noktasına Ulaşımından İtibaren İmalat Hatalarına Karşı 2 Yıl. Her Ürün İle Garanti Belgesi ve Yetkili Servis Listesi Mevcuttur. / 2 Years After arriving the end user point. Warranty Certicate and User Manuel With the Unit.



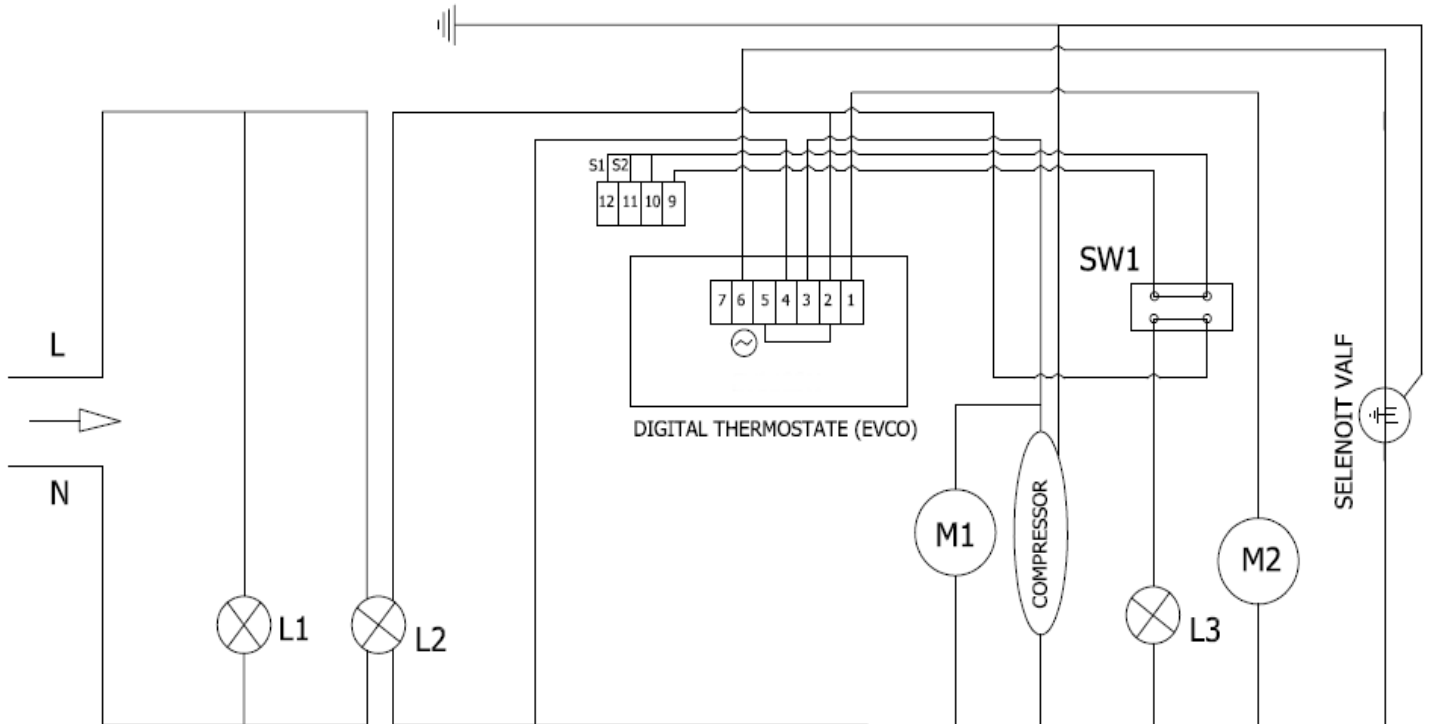
YEDEK PARA LİSTESİ / SPARE PART LIST

NO	PARA ADI	PART NAME	ADET QTY
1	KAPI	DOOR	1
2	DİK DOLAP MENTEŐE TAKIMI	UPRIGHT HINGE AND PARTS	1
3	ALT MENTEŐE BRAKETİ	LOWER HINGE BRACKET	1
4	ÜST MENTEŐE BRAKETİ	UPPER HINGE BRACKET	1
5	ÜST MENTEŐE PİMİ	UPPER HINGE PIN	1
6	ÜST MENTEŐE PLASTİK BUR	UPPER HINGE PLASTIC BUSHING	1
7	DRAYER	DRYER	1
8	KOMPRESSOR	COMPRESSOR	1
9	PROP UCU - 3mt	PROBE	1
10	PROP UCU - 1,5mt	PROBE	1
11	KONDANSER	CONDENSER	1
12	EVAPARATOR	EVAPORATOR	1
	EVAP KABİN PLASTİĐİ	EVAP CABINET PLASTIC	
13	PASLANMAZ AYAK	STAINLESS STEEL LEG	4
14	EVAP FANI (EMME)	EVAP FAN (SUCTION)	1
15	IŐIK YUVASI	LIGHT COVER	1
16	EVAPORATOR DÜĐMESİ	EVAPORATOR SWITCH	1
17	KAPI KİLİDİ	DOOR LOCK	1
18	EVC ÖZEL DİJİTAL	EVC SPECIAL CONTROL PANEL	1
	İFT PROPLU DİJİTAL(DİXELL)	TWO PROPED DIGITAL THERMOSTAT (EVCO)	1
	İFT PROPLU DİJİTAL(EVCO)	TWO PROPED DIGITAL THERMOSTAT (DIXELL)	1
	SU GEİRMEZ DİJİTAL	WATER PROOF DIGITAL	1
	TOUCH KONTROL DİJİTAL	TOUCH CONTROL DIGITAL	1
19	PLASTİK KORUMA	PLASTİK COVER	1
20	RAF 485X460	SHELF	3
21	RAF DİKMESİ	SHELF STANDARD	4
22	RAF TAŐIYICI TIRNAK	SHELF HOLDING CLIP	12
23	POWER TUŐU	POWER SWITCH	1
24	ON - OFF TUŐU	ON - OFF SWITCH	1
25	DİK DOLAP AYDINLATMA CAMI	UPRIGHT-LIGHTNING GLASS	1
26	BN4-BL4 DOLAP CONTASI	UPRIGHT-DOOR GASKET	1
27	SELENOİD VALF 1/4	SOLENOID VALVE	1
28	KANOPI	CANOPY	1
29	DİJİTAL ETİKET	DIGITAL LABEL	1
30	SU BOŐALTMA HAMİLİ	WATER DRAIN GROOVE	1
31	ANAKART (DİXELL)	MOTHERBOARD (DIXELL)	1
	ANAKART ÖN PANEL (DİXELL)	MOTHERBOARD FRONT PANEL (DIXELL)	1
	ANAKART (ELİWELL)	MOTHERBOARD (ELIWELL)	1
	ANAKART ÖN PANEL (ELİWELL)	MOTHERBOARD FRONT PANEL (ELIWELL)	1
32	ANAKART ETİKET	MOTHERBOARD LABEL	1
33	ANAKART PLASTİĐİ	MOTHERBOARD PLASTIC	1
34	ARA KABLO	DISPLAY CONNECTING CABLE	1
35	10W-FAN MOTORU	10W-FAN MOTOR	1
36	KONDANSER FAN PLASTİĐİ	PLASTIC CONDENSER FAN GRILL	1
37	ŐEBEKE KABLOSU	PLUG CABLE	1
38	DİK DOLAP TEKER	WHEEL WITHOUT BRAKE	2
39	DİK DOLAP TEKER - FRENLİ	WHEEL WITH BRAKE	2
40	DİK DOLAP SU TAVASI	WATER DRAIN PAN	1



DOLABI ELEKTRİK ŞEMASI

REFRIGERATORS ELECTRICAL SCHEMA



: DIGITAL THERMOTER / DIJITAL TERMOSTAT
 M1: KONDANSER FAN MOTORU / CONDENSER FAN MOTOR
 M2 : EVAP FAN MOTOR / EVAP FAN MOTOR
 S1 : ORTAM PROBU / ROOM PROB
 S2 : EVAPARATÖR PROBU / EVAPORATE PROB

L1 : POWER LAMBASI / POWER LAMB
 L2 : ACMA KAPAMA DÜĞMESİ / ON OFF BUTTON
 L3 : KANOPI LAMBASI / CABINET LIGHT
 SW1 : KAPI SWİÇH / DOOR SWITCH