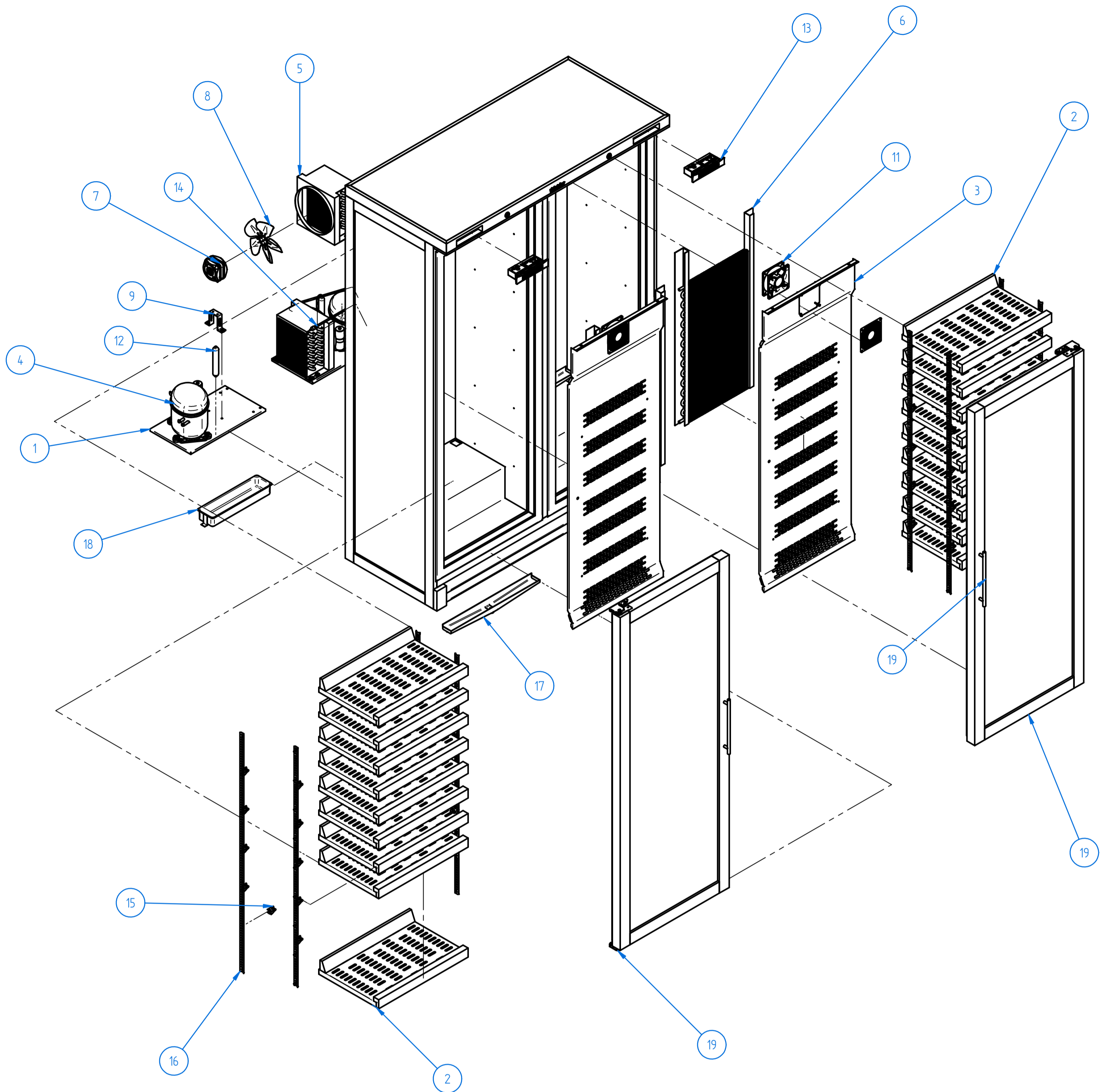


Nº	Descripción	Cant.
1	BANCADA AN 500 MIXTO	2
2	PARRILLA EVV	18
3	PROTECTOR EVAPORADOR 530	2
4	COMPRESOR 1/5 R-134	2
5	CONDENSADOR 8x4 LA.160 AN502MX	2
6	EVAPORADOR EV530 GAMA 2014	2
7	MOTOVENT. 5W.(H-75 D-200)	2
8	PALA 200 mm 28°	2

Nº	Descripción	Cant.
9	PIE MEDIANO (72 mm)	2
10*	REJILLA MOTOVENT. EBM LZ30-5	2
11	MOTOVAXIAL 120x120	2
12	FILTRO 30 GR. 1/4X1/4 R-134a	2
13	MICRO XW40L D.AZUL M.FRONTAL INOX	2
14	VALVULA OBUS R134a 1/4 SOLDAR	2

Nº	Descripción	Cant.
15	SOPORTE CREMALLERA	40
16	CREMALLERA INOX	8
17	BANDEJA DESAGÜE EVAP 540X50mm	2
18	BANDEJA EVAPORACION BM/BMGN	2
19	PUERTA EVV100	2



N°	Description	Quantity
1	MOUNTING PLATE FOR CONDENSING UNIT, AN 500 MX	2
2	EVV BOTTLE GRILL	18
3	AIR DISTRIBUTION PLATE, 530	2
4	COMPRESSOR 1/5 R134a (230V / 50Hz)	2
5	CONDENSER 8x4 160mm AN502MX	2
6	2014 EV530 EVAPORATOR	2
7	FAN MOTOR, 5w, Ø=200mm, h=75mm	2

N°	Description	Quantity
8	FAN BLADE, 7-7/8"	2
9	FAN HOLDER, 2-7/8"	2
10*	FAN GRID EBM LZ30-5 *	2
11	AXIAL FAN MOTOR	2
12	FILTER DRIER, 30 GR. 1/4"x1/4" R134a	2
13	ELECTRONIC CONTROLLER XW40L	2

N°	Description	Quantity
14	OBU's R134a VALVE 1 / 4 WELD	2
15	SHELF BRACKET	40
16	WALL RAIL	8
17	DRIP WATER TRAY, 21-1/4"x2"	2
18	PAN EVAPORATION	2
19	EVV100 DOOR	2