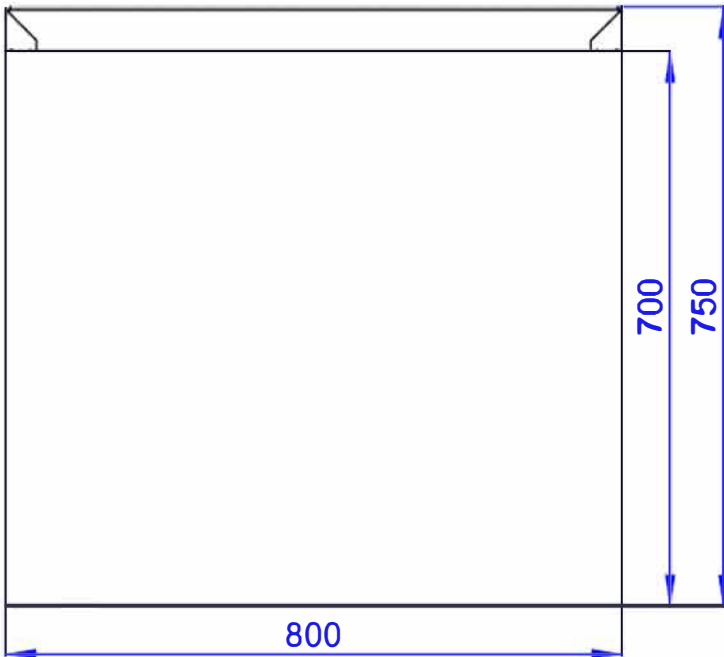
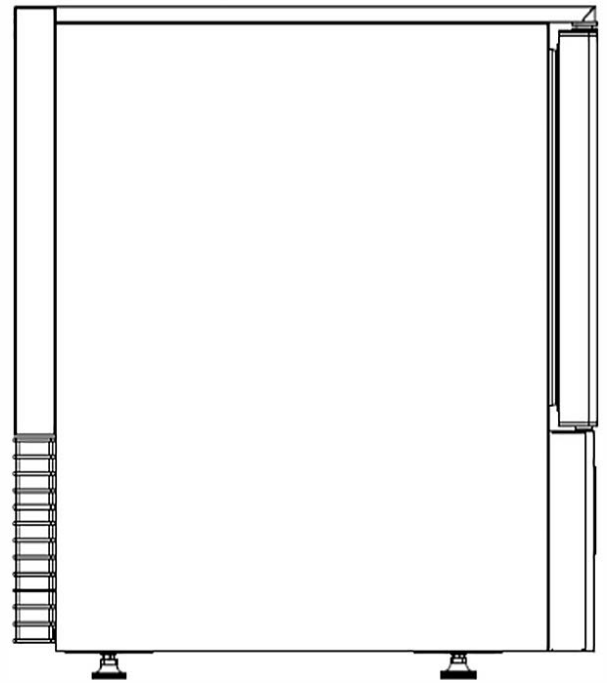
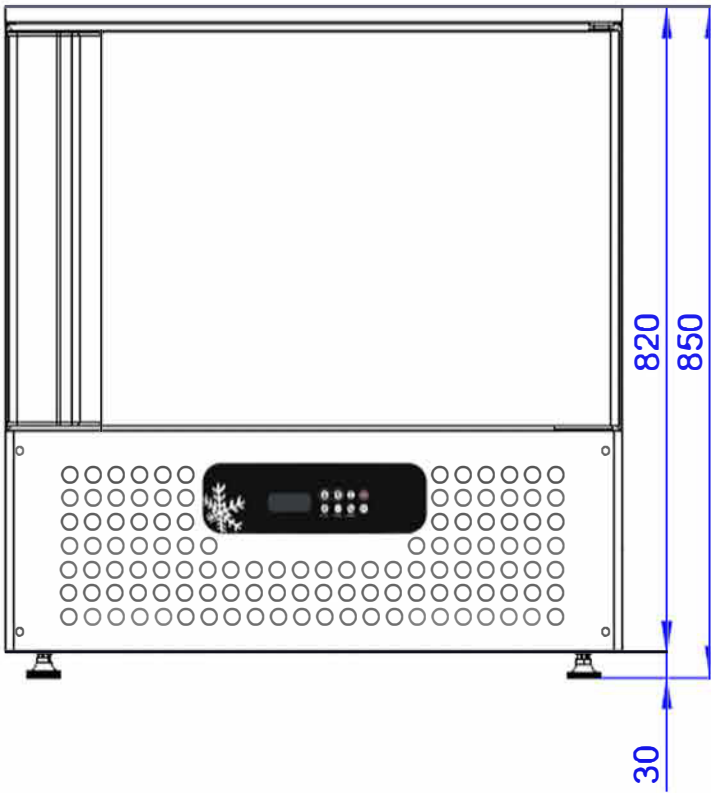


SFF546NR
MATERIAL AND TECHNICAL CHARACTERISTICS
MANUEL

INDEX :

- 1. CHARACTERISTICS**
- 2. INSIDE , OUTSIDE DIMENSIONS**
- 3. EXPLODED WIEV**
- 4. SPARE PART LIST**
- 5. GAS AND ELECTRICAL SCHEMA**





OUTSIDE DIMENSIONS = 800X750X850
IN SIDE DIMENSIONS = 680X405X398

CHARACTERISTIC SPECIALITIES

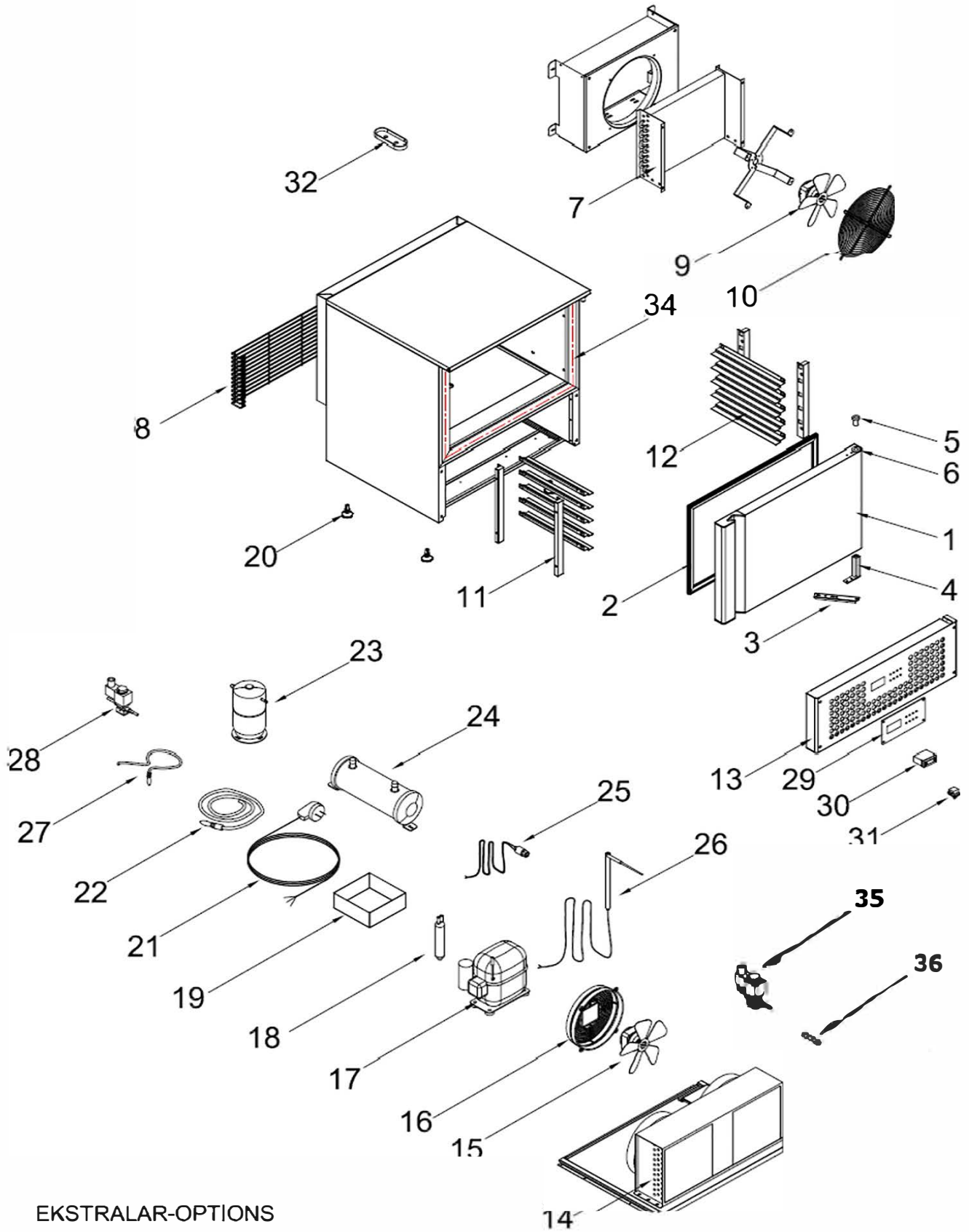
Climate Class	:N
Safety Class	:1
Chilling Tempature C	:+90 / +3C
Freezing Tempature C	:+90 / -18C
Thermostate Set Tempature	:-30C
Environment Tempature	: +38C
Environment Moisture Propertion	: %65
Energy Consuption	:0,50 KW/H
Power	:1 KW
Voltage- Frekans	: 220V / 50 Hz

ACCESORIES AND CONTROL SWITCHES

Digital Thermometer	: Special Blast Freezer Digital Thermometer
Prop	: Ad / PCC1
Hinges Group	: Ad / PCS 1
Stand	: Ad / PCS 4 Dsp Ayak / Dsp legs
Shelf	:5 Ad. GN 1/1 kap - 40x60 tepsi kapasiteli raf :5 Ad. Psc GN 1/1 cup - 40x60 capacity rack

TECHNICAL CHARACTERISTICS

Outside Dimensions	:800x750x850mm
Inside Dimensions	:680x405x398mm
Package Dimensions	:900x850x950mm
Inside - Chilling Volume	: 20 kg
Inside - Freezing Volume	: 15 kg
Gross Weight	:100 kg
Net Weigt	: 80 kg
Outside Body	: 0,60 mm INOX 304 SB+PVC
Inside Body	: 0,50 mm INOX 304 MAT+PVC
Insulation Metarial Thicnes	: 60 mm
Insulation Metarial Volume	: 42 Kg / m3 +/-1
Condanser	: NT2180-U R 290
Condanser	: VBL KONDANSER R-290
Condanser Fan	: 16 /65W--0,45A--1300/1550 Rpm--230V x 2Adet
Evaporatör	: 0,6 KW Blast Evap - VBL-5
Evaporatör Fan	: EBM 72/90W , A4E300 , 1320/1500 RPM 0,32-0,4 A AKSİEL FAN MOTORU 1 Adet
Dryer	: 3/8 Blast Drayer
refrigerator Gas	: R290
Ref. Gas Quantity	: 130 gr
Certifications	EN 60335-1 ve EN 60335-2-89' ye uygundur.
Serial No	: Ambalajlı Halde Okunacak Şekilde Uygun Yere Yazılır / Packed And Easy Read
Packing	: Alta Tahta Palet, Karton ve Havalı Naylon İçinde / Wooden Palet İs Down And Covered
Quality Time	: Kullanım Noktasına Ulaşımından İtibaren İmalat Hatalarına Karşı 2 Yıl. Her Ürün İle Garanti Belgesi ve Yetkili Servis Listesi Mevcuttur. / 2 Years After arriving the end user point. Warranty Certicate and User Manuel With the Unit.



EKSTRALAR-OPTIONS



SPARE PART LIST

NO	PART NAME	ADET QTY
1	DOOR	1
2	DOOR GASKET	1
3	LOWER HINGE BRACET	1
4	UPRIGHT HINGE AND PARTS	1
5	UPPER HINGE PIN	1
6	PLASTIC HINGE BUSHING	1
7	EVAPORATOR	1
8	BACKSIDE COVERING WIRE	1
9	EVAPORATOR FAN EBM 72/90	1
10	WIRE FAN COVERING GRILL	1
11	SHELF STANDARD	4
12	SHELF GUIDE	10
13	CANOPY	1
14	VBL-5 CONDANSER	1
15	16/65 W-FAN MOTOR	2
16	PLASTIC CONDENSER FAN GRILL	2
17	NT2180-U R 290	1
18	DRYER	1
19	WATER PAN	1
20	DSP LEGS	4
21	PLUG CABLE	1
22	PROBE-3m	1
23	LIQUID TANK	1
24	LIQUID STORAGE	1
25	PRESSURE SENSOR	1
26	PROBE	1
27	PROBE-1,5m	1
28	SOLENOID VALVE 3/8	1
29	DIGITAL LABEL	1
30	MECHANICAL BLAST DIGITAL (EVCO)	1
30	MECHANICAL BLAST DIGITAL (DIXELL)	1
31	EVAPORATOR SWITCH	1
32	PROBE COVER	1
33	BLAST TOUCH DIGITAL (EVCO)	1
34	DOOR RESISTANCE	1
35	EXPANSION VALVE NEEDLE	1
36	EXPANSION VALVE	1

