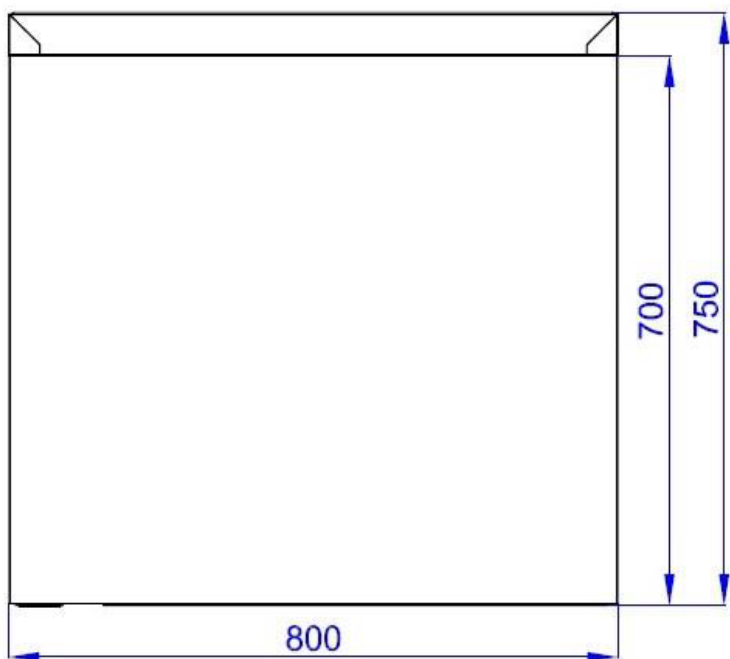
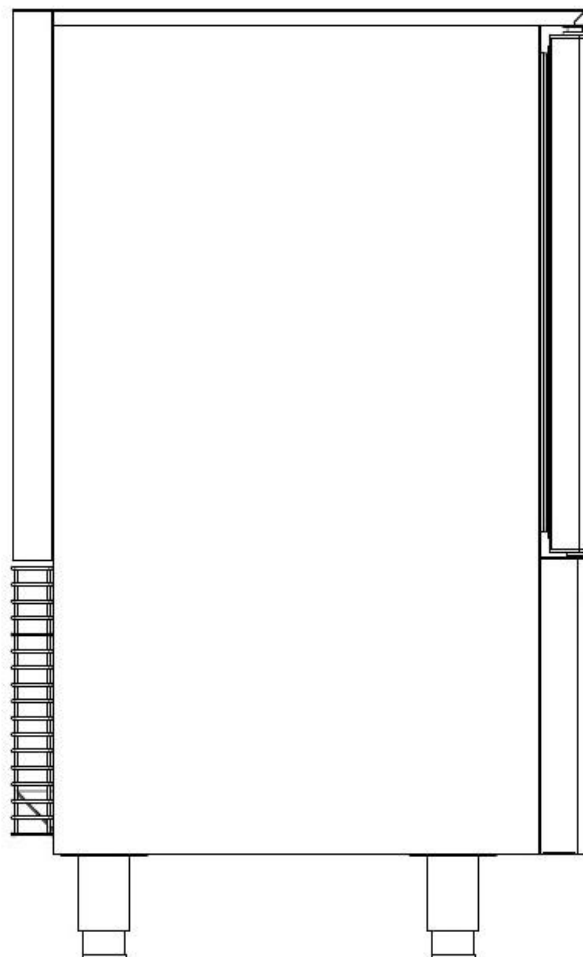
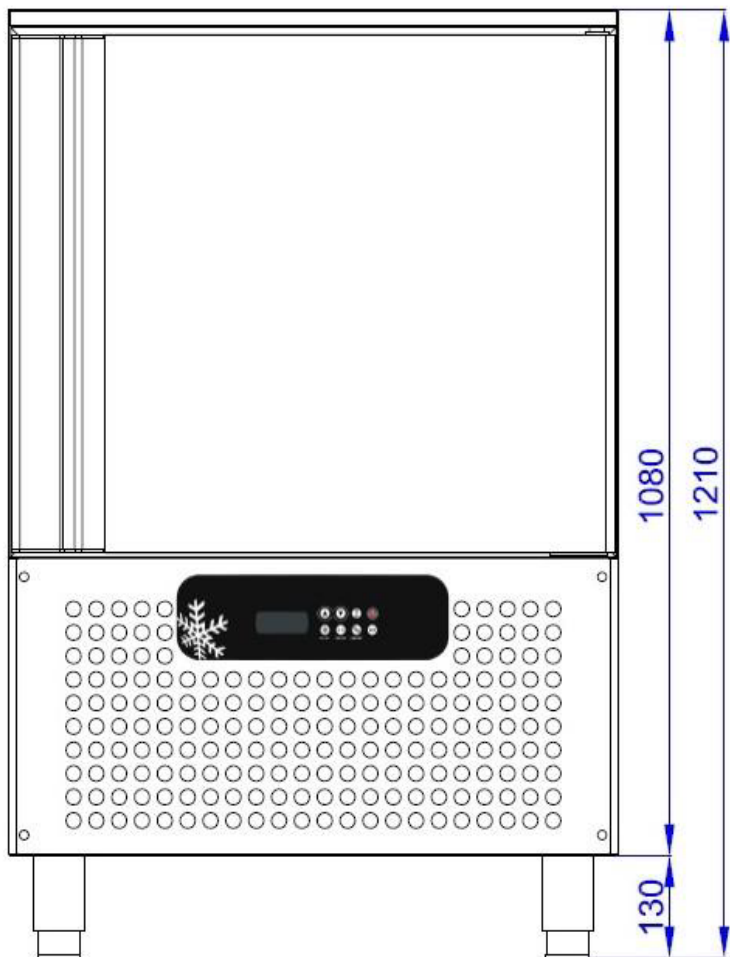


SFF746NR
MATERIAL AND TECHNICAL CHARACTERISTICS MANUEL

INDEX :

1. CHARACTERISTICS
2. INSIDE , OUTSIDE DIMENSIONS
3. EXPLODED VIEW
4. SPARE PART LIST
5. GAS AND ELECTRICAL SCHEMA





OUTSIDE DIMENSIONS = 800x750x1210
IN SIDE DIMENSIONS = 680x405x560

CHARACTERISTIC SPECIALITIES

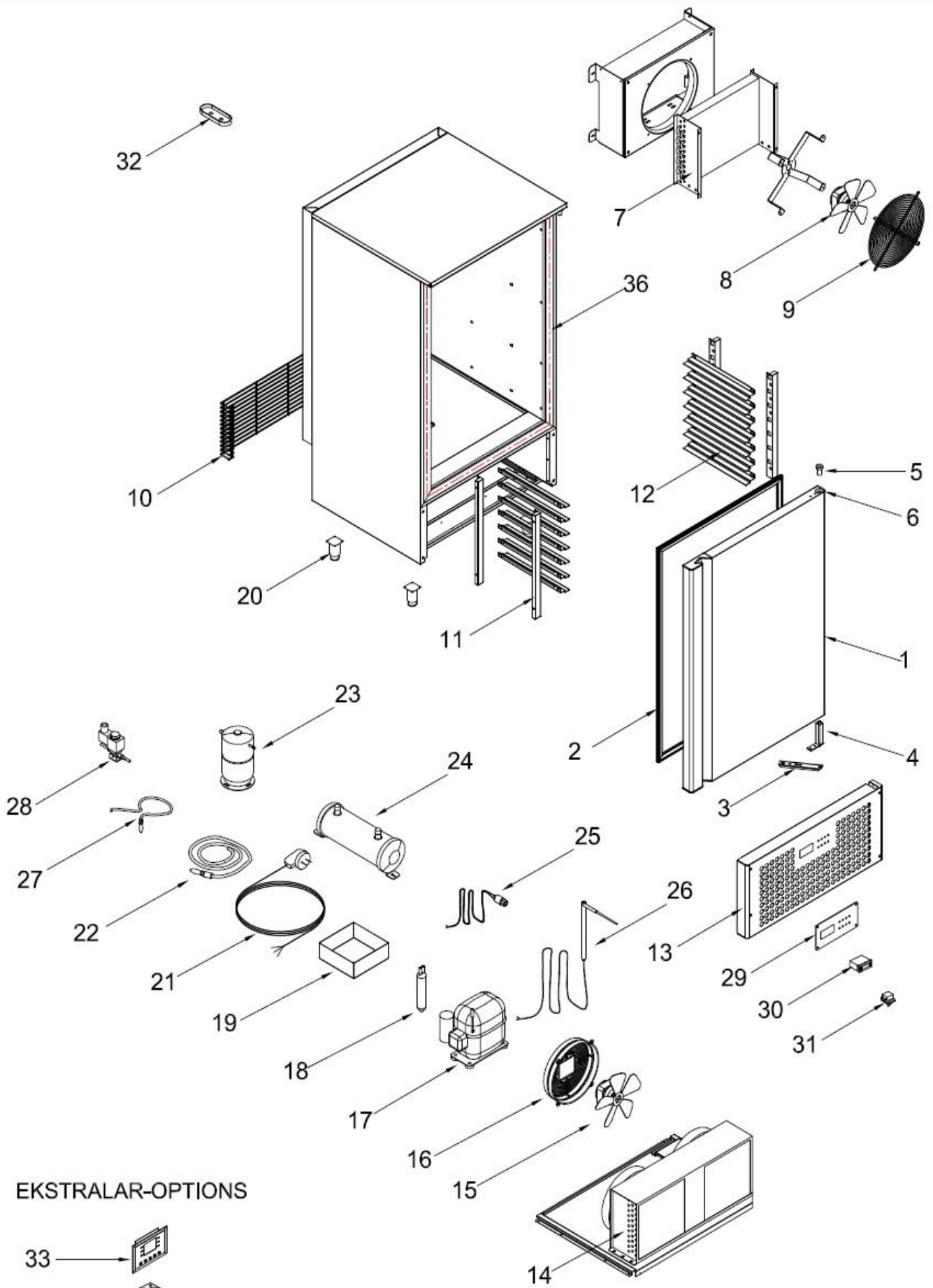
İklim Sınıfı VBL-7	:N
Safety Class	:1
Chilling Tempature C	:+90 / +3C
Freezing Tempature C	:+90 / -18C
Thermostate Set Tempature :-30C	
Environment Tempature	: +38C
Environment Moisture Propertion : %65	
Energy Consuption	:0,55 KW/H
Power	:1,2 KW
Voltage- Frekans	: 220V / 50 Hz

ACCESORIES AND CONTROL SWITCHES

Digital Thermometer	: Special Blast Freezer Digital Thermometer
Prop	: Ad / PCC1
Hinges Group	: Ad / PCS 1
Stand	: Ad / PCS 4 Dsp legs
Shelf	:7 Ad. Psc GN 1/1 cup - 40x60 capacity rack

TECHNICAL CHARACTERISTICS

Outside Dimensions	: 800x750x1210mm
İnside Dimensions	: 680x405x560mm
Package Dimensions	: 900x850x1380mm
İnside - Chilling Volume	: 25 kg
İnside - Freezing Volume	: 20 kg
Gross Weight	: 130 kg
Net Weigt	: 110 kg
Outside Body	: 0,60 mm INOX 304 SB+PVC
İnside Body	: 0,50 mm INOX 304 MAT+PVC
Insulation Metarial Thicnes	: 60 mm
Insulation Metarial Volume	: 42 Kg / m3 +/-1
Condanser	: NT 2210 U R 290
Condanser	: VBL KONDANSER R-290
Condanser Fan	: 16 /65W--0,45A--1300/1550 Rpm--230V x 2Adet
Evaporatör	: 0,6 KW Blast Evap - VBL-7
Evaporatör Fan	: EBM 72/90W , A4E300 , 1320/1500 RPM 0,32-0,4 A AKSİEL FAN MOTORU 1 Adet
Dryer	: 3/8 Blast Drayer
refrigerator Gas	: R290 : 140 gr
Ref. Gas Quantity	: EN 60335-1 ve EN 60335-2-89' ye uygundur. : Ambalajlı Halde Okunacak Şekilde Uygun Yere Yazılır / Packed And Easy Read
Certifications	
Serial No	: Alta Tahta Palet, Karton ve Havalı Naylon İçinde / Wooden Palet İs Down And Covered
Packing	: Kullanım Noktasına Ulaşımından İtibaren İmalat Hatalarına Karşı 2 Yıl. Her Ürün İle Garanti Belgesi ve Yetkili Servis Listesi Mevcuttur. / 2 Years After arriving the end user point. Warranty Certicate and User Manuel With the Unit.
Qualty Time	



EKSTRALAR-OPTIONS

- 33 →
- 34 →
- 35 →

SPARE PART LIST

NO		PART NAME	ADET QTY
1		DOOR	1
2		DOOR GASKET	1
3		LOWER HINGE BRACKET	1
4		UPRIGHT HINGE AND PARTS	1
5		UPPER HINGE PIN	1
6		PLASTIC HINGE BUSHING	1
7		EVAPORATOR	1
8		EVAPORATOR FAN EBM 72/90	1
9		WIRE FAN COVERING GRILL	1
10		BACKSIDE COVERING WIRE	1
11		SHELF STANDARD	4
12		SHELF GUIDE	14
13		CANOPY	1
14		VBL CONDENSER R-290	1
15		16/65 W-FAN MOTOR	2
16		PLASTIC CONDENSER FAN GRILL	2
17		NT 2210 U R 290	1
18		DRYER	1
19		WATER PAN	1
20		STAINLESS STEEL LEG	4
21		PLUG CABLE	1
22		PROBE-3m	1
23		LIQUID TANK	1
24		LIQUID STORAGE	1
25		PRESSURE SENSOR	1
26		PROBE	1
27		PROBE-1,5m	1
28		SOLENOID VALVE 3/8	1
29		DIGITAL LABEL	1
30		MECHANICAL BLAST DIGITAL (EVCO)	1
30		MECHANICAL BLAST DIGITAL (DIXELL)	1
31		EVAPORATOR SWITCH	1
32		PROBE COVER	1
33		BLAST TOUCH DIGITAL (EVCO)	1
34		WHEEL WITHOUT BRAKE	4
35		WHEEL WITH BRAKE	4
36		DOOR RESISTANCE	1
37		EXPANSION VALVE NEEDLE	1
38		EXPANSION VALVE	1

