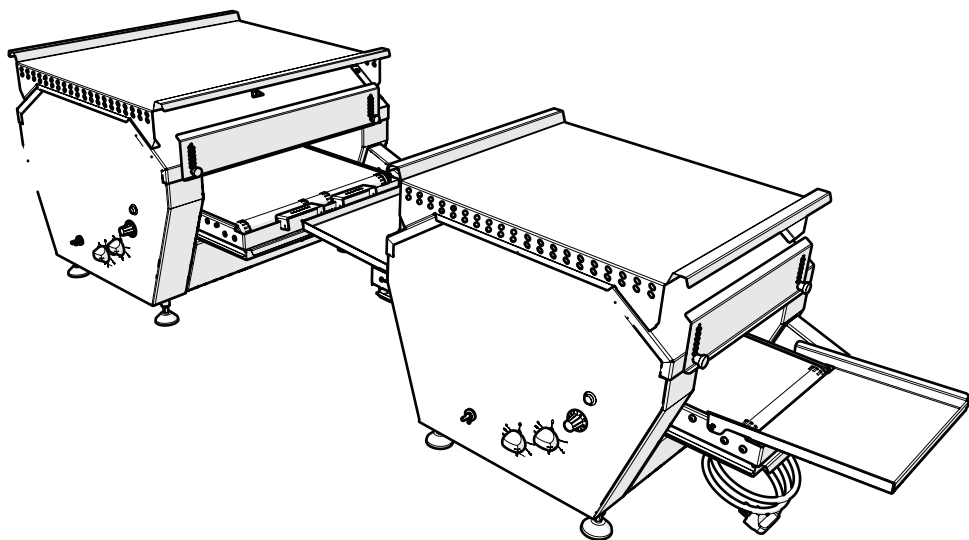


CONVEYOR HEATING MACHINE USER MANUAL

Please read it before running it.
There are important explanations for you.

EDGAT47 EDGAT63



CE

INDEX

Technical Information Tables	3
General Warnings and Safety Precautions.....	4
Setup	6
Manual Model Operation and Operation.....	7
Basic and Technical Characteristics.....	8
Electrical Connections	10
Cleaning and maintenance	14
Spare Parts List AKIE-01.....	15
Spare Parts List AKIE-02.....	19



It is a social responsibility of individuals to deliver the product to valid collection points that recycle electricity or electronics when you want to dispose of it. In this way, by ensuring the correct disposal of the product, you help prevent possible negative consequences for the environment and human health. Recycling of materials will help preserve natural resources. For more detailed information about the recycling of this product, please contact the municipality, the household waste disposal service or the store where you purchased the product.



The packaging materials of the product are made of recyclable materials in accordance with national environmental legislation. Do not dispose of packaging materials with household waste or other waste. Take these materials to the recycling points determined by the local authorities.

GENERAL INFORMATION

Model	EDGAT47	EDGAT63
Product dimensions (mm)	1150 x 470 x 510	1150 x 635 x 510
Net Weight (kg)	150	150
Tape Length(mm)	740	745
Band Width(mm)	280	415
Max Conveyor Introduction Height Measure (mm)	85	85
Cooking area (mm)	260 x 550	260 x 785

ELECTRICAL INFORMATION

Voltage	220-240 VAC	380-415 VAC 3N PE
Frequency	50-60 hz	50-60 hz
Electric Power	3700 W	6634 W
Pulled Amps	16 A	30 A
Cable cross section	3 x 2,5 mm ² TTR	5 x 2,5 mm ² TTR
Internal humidity (>=)	55%	55%
Cable Type	On/Off - Belt Speed Control - With Limit Thermostat	On/Off - Belt Speed Control - With Limit Thermostat

General Warnings and Safety Precautions

Dear customer, we wish you to use your manufactured product in the best way by passing the quality checks in a careful and detailed way. We strongly recommend that you read this entire user manual before using the product. This guide will help you use the product quickly and safely.



The following safety instructions will help protect you from the risk of personal injury or damage to your product. If these instructions are not followed, the product will not be covered by the warranty and no responsibility for human health will be accepted.

- Please be careful that flammable materials that may cause a fire are not located near the device.
- Keep your device in an environment with suitable humidity and ventilate well. Use a hood to remove steam and smoke generated during cooking.
- Installation and maintenance of the device, it should be carried out only by qualified personnel. Please contact an authorized representative authorized by the manufacturer. Otherwise, your device will be excluded from the warranty.
- Replace the damaged parts of the device with the original spare parts. The manufacturer undertakes that the device can be used safely only when these parts are used.
- Children and uninformed persons should not be allowed to use the device. It should be used by persons trained in the risks associated with the device.
- Turn off the device in case of malfunction or incorrect operation.
- The supply line of the device must have a ground line and a residual current relay.
- Chlorine (sodium hypochlorite, hydrochloric or muriatic acid, etc.) is used to clean the device.) containing products (even if diluted) do not use. Do not use metal tools to clean rust-free. Wipe first with warm soapy water and then with a dry cloth.
- Do not keep flammable liquids near this device.
- Do not clean the appliance directly with water jets or water vapor.
- Do not allow dirt, oil, food or other waste to form deposits on the device, do regular cleaning.
- Make the electrical connection of the device through a fuse that matches the values and fix the fuse in question in a place that is easily accessible. You can find the values from the label on the device or from the table inside the grid.
- The device's electricity must be strictly grounded; the device must not be connected when there is no ground line.
- The device is recommended to be checked by an authorized person. Call a service for this purpose at least once a year.

General Warnings and Safety Precautions



- Always follow the applicable safety instructions.
- Understanding the importance of the user manual, keep it in an easily accessible place for future use and do not lose it.
- The manufacturer reserves the right to make changes to the product. It clearly deciphers the differences between the models.

In any case, contact your authorized dealer for any problems.



This is a warning sign that indicates that care should be taken for safe use.



Excessive temperature and this is a warning sign to act according to the environment.



It is a warning sign indicating the danger of electrical voltage.

- Stainless steel material is used in the device.
- The device is designed in accordance with industrial-type use in accordance with the low voltage directive (LVD 2014/35ED).
- The device is designed for industrial use within the scope of the electromagnetic compatibility directive (EMC2014/30EY).
- Your device is manufactured for use in industrial working environments; restaurants, restaurants, fast food, canteens, tourist facilities, cafeterias, hotels and other environments where accommodation is made.



-Always have the authorized service installed and electrical connections of the product. The manufacturer is not responsible for damage to the product caused by operations performed by unauthorized persons.

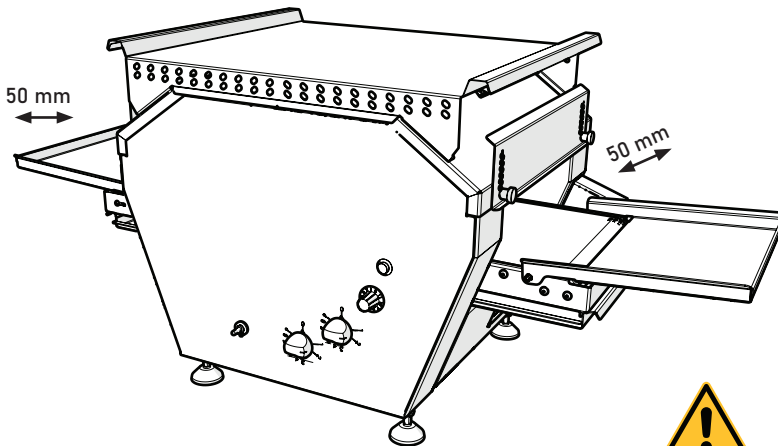
-Before installation, please note that the connection lines are made correctly and completely. If the assembly cannot be done due to a malfunction caused by the absence of any of them, service fee will be requested from the customer.



-After removing the protective nylon on the top of the device before starting the device for the first time, first wipe it with a damp and then a dry cloth.

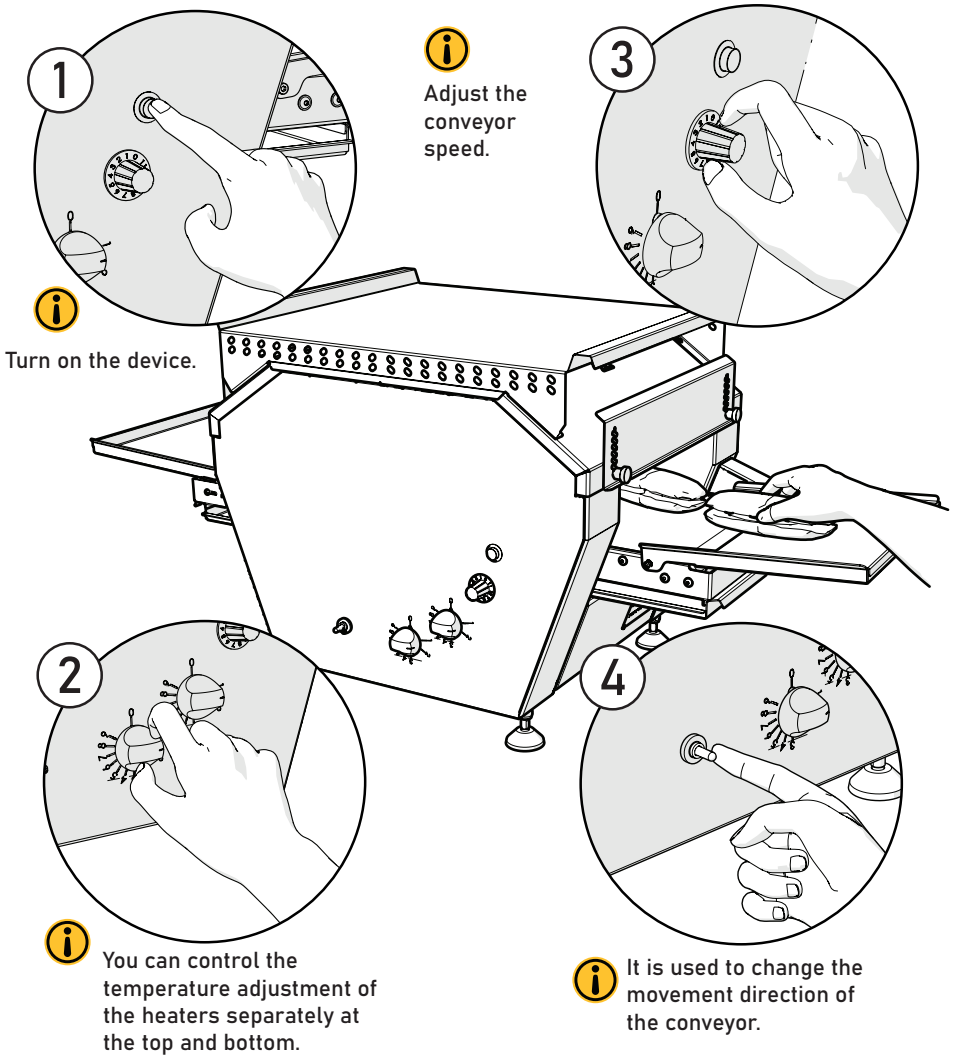
-Place it under the hood to eliminate the smoke and odor that may appear during the cooking process.

-Children and uninformed persons should not be allowed to use the device.



Decouple a sufficient distance between the device and the walls.

Manual Model Operation and Operation

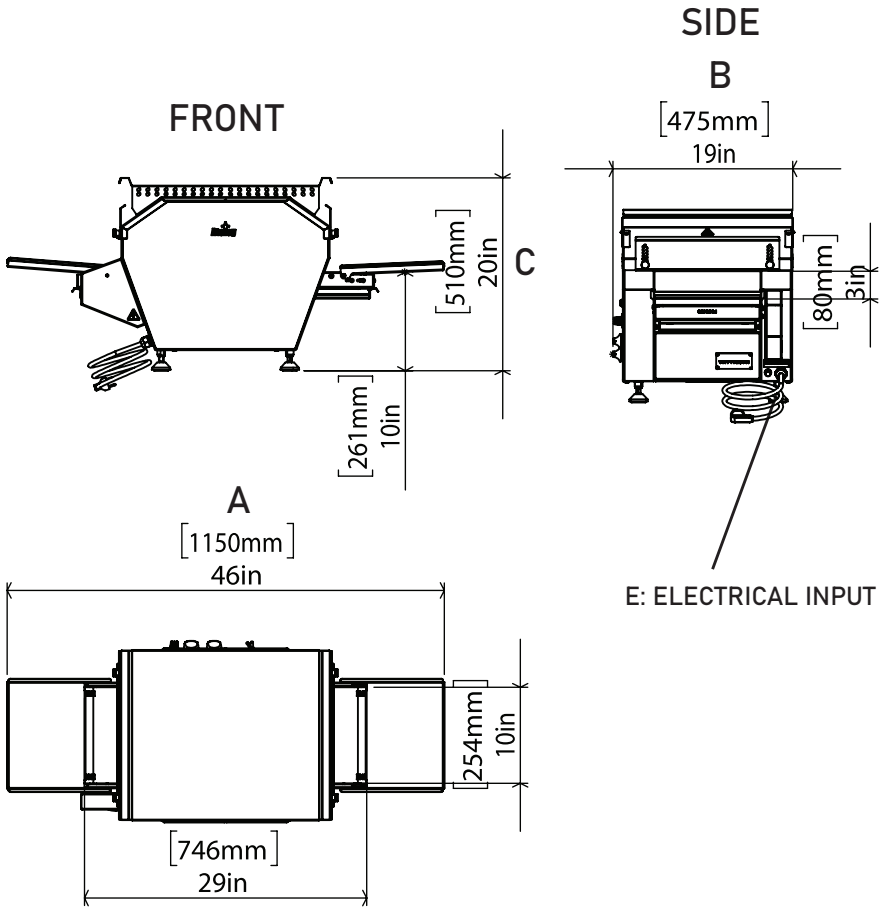


Indicates the time elapsed between the Input / Output Tray.

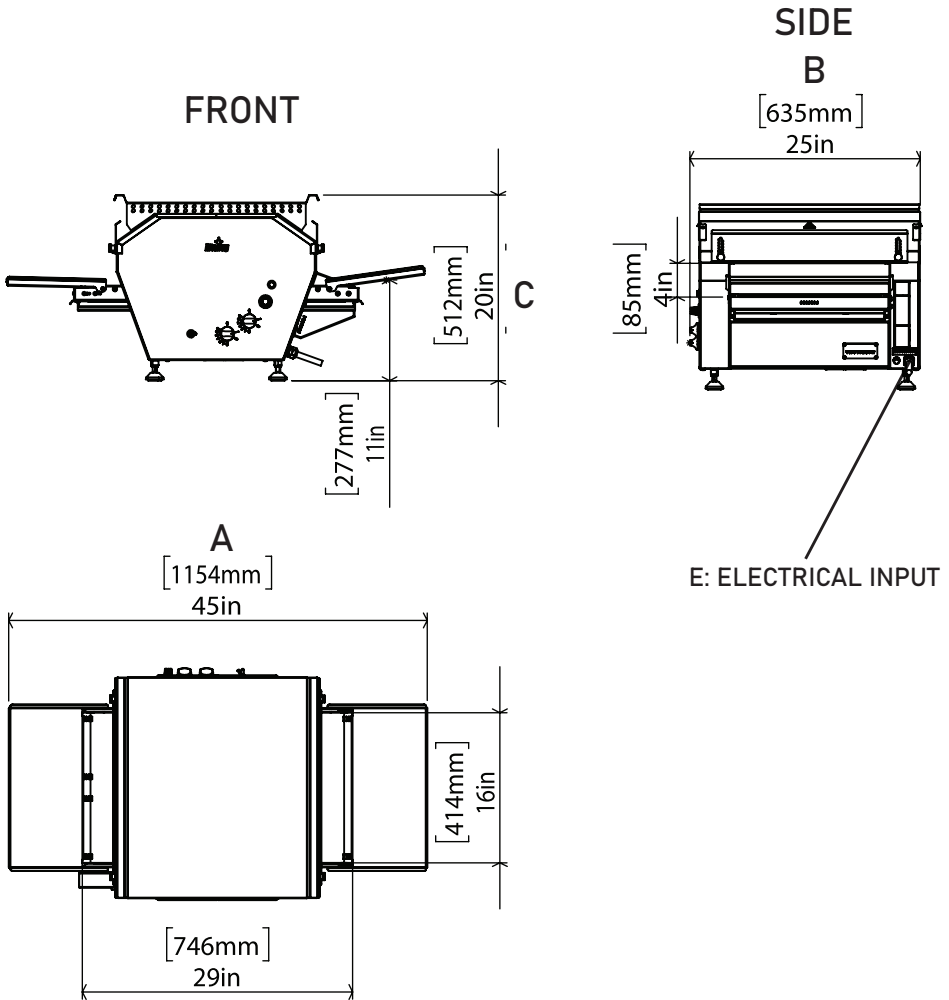
Speed Ad- justment	0	1	2	3	4	5	6	7	8	9
Second	270	240	210	180	150	120	90	60	30	10



- Do not touch hot surfaces while the device is operating.
- Do not put your hand into the heating area while the device is operating.

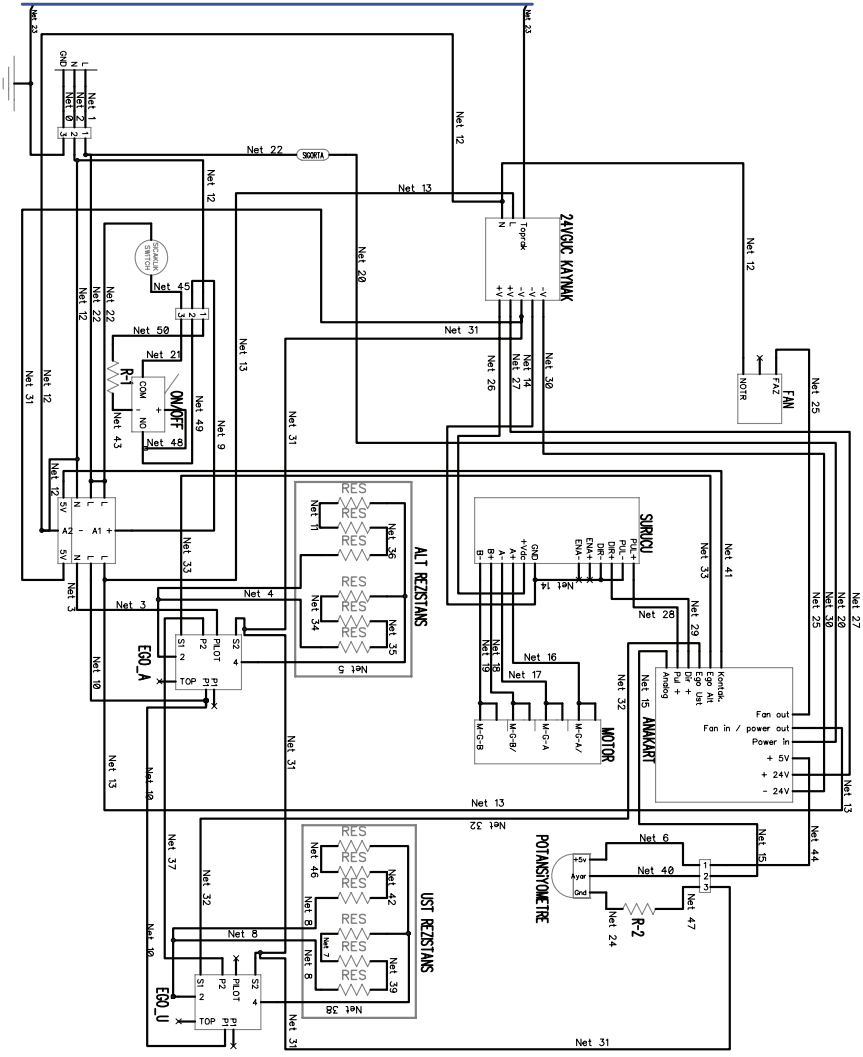


PRODUCT CODE	A	B	C
EDGAT47	1150 mm	475 mm	510 mm



PRODUCT CODE	A	B	C
EDGAT63	1154 mm	635 mm	512 mm

AKIE



Net 0	Kablo Adli	Açiklama
Net 1	TOPRAK	220 AC
Net 2	NOTR	NOTR
Net 3	NOTR	NOTR
Net 4	NOTR	220 AC
Net 5	NOTR	NOTR
Net 6	+5V D/C	+5V D/C
Net 7	NOTR	220 AC
Net 8	NOTR	220 AC
Net 9	NOTR	220 AC
Net 10	NOTR	220 AC
Net 11	NOTR	220 AC
Net 12	NOTR	NOTR
Net 13	NOTR	220 AC
Net 14	NOTR	-24V D/C
Net 15	ANALOG DATA	NOTR
Net 16	MOTOR DATA	NOTR
Net 17	MOTOR DATA	NOTR
Net 18	MOTOR DATA	NOTR
Net 19	MOTOR DATA	NOTR
Net 20	NOTR	220 AC
Net 21	NOTR	220 AC
Net 22	NOTR	220 AC
Net 23	NOTR	TOPRAK
Net 24	NOTR	-24V D/C
Net 25	NOTR	220 AC
Net 26	NOTR	+24V D/C
Net 27	NOTR	+24V D/C
Net 28	NOTR	MOTOR D/C
Net 29	NOTR	MOTOR D/C
Net 30	NOTR	-24V D/C
Net 31	NOTR	-24V D/C
Net 32	NOTR	EGO U DATA
Net 33	NOTR	EGO A DATA
Net 34	NOTR	220 AC
Net 35	NOTR	220 AC
Net 36	NOTR	220 AC
Net 37	NOTR	NOTR
Net 38	NOTR	NOTR
Net 39	NOTR	220 AC
Net 40	NOTR	ANALOG DATA
Net 41	NOTR	KONT. DATA
Net 42	NOTR	220 AC
Net 43	NOTR	+5V D/C
Net 44	NOTR	+5V D/C
Net 45	NOTR	220 AC
Net 46	NOTR	220 AC
Net 47	NOTR	-24V D/C
Net 48	NOTR	220 AC
Net 49	NOTR	220 AC
Net 50	NOTR	NOTR

Electrical Connections

GRUP	NERDEN	KOD NO.	PABAÇ	BOY	KESİT	RENK	ADET	PABAÇ	NEREYE
GUÇ KAYNAĞI	NÖTR	x	UY-23010	22 cm	x	F-SİYAH	1 ADET	YOK	PAN NÖTR
GUÇ KAYNAĞI	FAZ	Net 12-4	UY-3010	38 cm	0,5 mm ²	MAVI	1 ADET	YÜKSÜK	KONTAKTÖR BOBİN UÇ (A2)
GUÇ KAYNAĞI	TOPRAK	Net 13-1	UY-3010	37 cm	0,5 mm ²	KAHVERENGİ	1 ADET	YÜKSÜK	KONTAKTÖR ÇIKIŞ 1
GUÇ KAYNAĞI	+ 24 v	Net 23-2	UY-3010	32 cm	2,5mm ²	SARI-YEŞİL	1 ADET	YK 606 1	ALT GÖVDE ŞAŞE
GUÇ KAYNAĞI	+ 24 v	Net 27	UY-3010	22 cm	0,5 mm ²	KAHVERENGİ	1 ADET	UY-3010	ANAKART +V
GUÇ KAYNAĞI	- 24 v	Net 26	UY-3010	15 cm	0,5 mm ²	KAHVERENGİ	1 ADET	UY-3010	SURUCU +V
GUÇ KAYNAĞI	- 24 v	Net 30	UY-3010	27 cm	0,5 mm ²	MAVI	1 ADET	YÜKSÜK	ANAKART -V
GUÇ KAYNAĞI	- 24 v	Net 31-1	UY-23010	41 cm	0,5 mm ²	MAVI	1 ADET	YÜKSÜK	KONTAKTÖR (NO ÇIKIŞ) (DATA GND)
GUÇ KAYNAĞI	- 24 v	Net 31-2	UY-23010 1	40 cm	0,5 mm ²	MAVI	1 ADET	2638 1 1	ALT EGO 51
GUÇ KAYNAĞI	- 24 v	Net 14-1	UY-3010	14 cm	0,5 mm ²	MAVI	1 ADET	UY-23010 1	SURUCU -V
SURUCU	SURUCU -V	Net 14-2	UY-23010 1	7 cm	0,5 mm ²	MAVI	1 ADET	UY-23010 2	SURUCU DIR-
SURUCU	SURUCU DIR-	Net 14-3	UY-23010 2	5 cm	0,5 mm ²	MAVI	1 ADET	UY-3010	SURUCU PUL-
ŞAŞE	GÖVDE ŞAŞE	Net 23-3	YK 606	33 cm	2,5mm ²	SARI-YEŞİL	1 ADET	YK 606 1	ALT GÖVDE ŞAŞE
ANAKART	POWER IN	Net 20	UY-3010	37 cm	0,5 mm ²	KAHVERENGİ	1 ADET	LEHİM	SİGORTA (SA)
ANAKART	PAN OUT	Net 13-2	UY-3010	35 cm	0,5 mm ²	KAHVERENGİ	1 ADET	YÜKSÜK	KONTAKTÖR ÇIKIŞ 1
ANAKART	FAN ÜNİ	x	UY-2007	27 cm	x	F-SİYAH	1 ADET	YOK	FAN FAZ
ANAKART	KONTAKTÖR DATA	Net 41	UY-3010	30cm	0,5 mm ²	KAHVERENGİ	1 ADET	YÜKSÜK	KONTAKTÖR (NO GİRİŞ) (DATA GND)
ANAKART	+ 5 v	Net 44	UY-3010	70 cm	0,5 mm ²	KAHVERENGİ	1 ADET	1638	POT. +5V [YEŞİL KLEMENS DİŞİ]
ANAKART	ÜST EGO DATA	Net 52	UY-3010	48 cm	0,5 mm ²	KAHVERENGİ	1 ADET	UY-3010	ÜST EGO S2
ANAKART	ANALOG SINYAL	Net 15	UY-3010	58 cm	0,5 mm ²	KAHVERENGİ	1 ADET	UY-3010	POT. ANALOG [YEŞİL KLEMENS DİŞİ]
ANAKART	ALT EGO DATA	Net 33	UY-3010	48 cm	0,5 mm ²	KAHVERENGİ	1 ADET	1638	ALT EGO S2
ANAKART	PUL +	Net 26	UY-3010	27 cm	0,5 mm ²	KAHVERENGİ	1 ADET	UY-3010	SURUCU PUL +
ANAKART	DIR +	Net 29	UY-3010	25 cm	0,5 mm ²	KAHVERENGİ	1 ADET	UY-3010	SURUCU DIR +
KLEMENS	KLEMENS_1(FAZ)	Net 22-2	YÜKSÜK	19 cm	0,5 mm ²	KAHVERENGİ	1 ADET	LEHİM	SİGORTA
KLEMENS	KLEMENS_2(NÖTR)	Net 22-1	YÜKSÜK	13 cm	2,5 mm ²	KAHVERENGİ	1 ADET	YÜKSÜK	KONTAKTÖR 2 (GİRİŞ)
KLEMENS	KLEMENS_3(TOPRAK)	Net 12-1	YÜKSÜK	68 cm	0,5 mm ²	MAVI	1 ADET	UY-3010	ON-OFF (NÖTR LAMBDA) [MAVİ KLEMENS DİŞİ]
KLEMENS	KONTAKTÖR 2(GİRİŞ)	Net 23-1	YÜKSÜK	13 cm	2,5 mm ²	SARI-YEŞİL	1 ADET	YÜKSÜK	KONTAKTÖR 3(GİRİŞ)
KONTAKTÖR	KONTAKTÖR 2(GİRİŞ)	Net 22-3	YÜKSÜK	6 cm	0,5 mm ²	KAHVERENGİ	1 ADET	YÜKSÜK	ŞAŞE
KONTAKTÖR	KONTAKTÖR 1(GİRİŞ)	Net 22-4	YÜKSÜK	33 cm	0,5 mm ²	KAHVERENGİ	1 ADET	1638	KONTAKTÖR 1(GİRİŞ)
KONTAKTÖR	KONTAKTÖR 3(GİRİŞ)	Net 10-1	YÜKSÜK	6 cm	0,5 mm ²	MAVI	1 ADET	YÜKSÜK	SICAKLIK SENSÖR
KONTAKTÖR	KONTAKTÖR 2(ÇIKIŞ)	Net 12-3	YÜKSÜK	64 cm	2,5 mm ²	KAHVERENGİ	1 ADET	2638 2 1	KONTAKTÖR BOBİN UÇ (A2)
KONTAKTÖR	KONTAKTÖR 3(ÇIKIŞ)	Net 3	YÜKSÜK	64 cm	2,5 mm ²	MAVI	1 ADET	2638	ALT EGO P1
KONTAKTÖR	KONTAKTÖR BOBİN UÇ (A1)	Net 9	YÜKSÜK	80 cm	0,5 mm ²	KAHVERENGİ	1 ADET	UY-3010	ALT EGO P2
EGO ALT	ALT EGO 51	Net 31-3	2638 1 1	13 cm	0,5 mm ²	MAVI	1 ADET	2638 1 2	ON-OFF(NÖT) [MAVİ KLEMENS DİŞİ]
EGO ALT	ALT EGO P1	Net 10-2	2638 2 1	13 cm	1,5 mm ²	KAHVERENGİ	1 ADET	1638	ÜST EGO S2
EGO ALT	ALT EGO PILOT	Net 37	1638	12 cm	1,5 mm ²	MAVI	1 ADET	1638	ÜST EGO P1
EGO ALT	ALT EGO 2	Net 4-1	2638	34 cm	1,5 mm ²	KAHVERENGİ	1 ADET	METAL (0,5-1,5) SİLİKON	ÜST EGO P2
EGO ALT	ALT EGO 4	Net 4-2	1638	30 cm	1,5 mm ²	KAHVERENGİ	1 ADET	METAL (0,5-1,5) SİLİKON	ALT REZS. 2. GRUP FAZ
EGO ALT	ALT EGO 4	Net 5-1	1638	70 cm	1,5 mm ²	MAVI	1 ADET	METAL (0,5-1,5) SİLİKON-1	ALT REZS. 2. GRUP NÖTR
EGO ALT	ALT REZS. 2. GRUP NÖTR	Net 5-2	METAL (0,5-1,5) SİLİKON-1	26 cm	1,5 mm ²	MAVI	1 ADET	METAL (0,5-1,5) SİLİKON	ALT REZS. 1. GRUP NÖTR

GRUP	NERDEN	KOD NO.	PABUÇ	BOY	KESİT	RENK	ADET	PABUÇ	NEREYE
EGO ÜST	ÜST EGO 51	Net 31-4	2638 1 2	19 cm	0,5 mm2	MAVİ	1 ADET	UY-3010	POT. (GND) [YEŞİL KLEMENS DİŞİ]
EGO ÜST	ÜST EGO 2	Net 8-2	2638	40 cm	1,5 mm2	KAHVERENGİ	1 ADET	METAL (0,5-1,5) SİLİKON	ÜST REZS. 1. GRUP FAZ
EGO ÜST	ÜST EGO 4	Net 8-1	1638	42 cm	1,5 mm2	KAHVERENGİ	1 ADET	METAL (0,5-1,5) SİLİKON	ÜST REZS. 2. GRUP FAZ
EGO ÜST	ALT REZS. 2. GRUP NOTR	Net 38-1	1638	87	1,5 mm2	MAVİ	1 ADET	METAL (0,5-1,5) SİLİKON-2	ALT REZS. 2. GRUP NOTR
		Net 38-2	METAL (0,5-1,5) SİLİKON-2	26 cm	1,5 mm2	MAVİ	1 ADET	METAL (0,5-1,5) SİLİKON	ALT REZS. 1. GRUP NOTR
MOTOR	MOTOR-A	X	YOK	25 cm	X	B YEŞİL-B SİYAH	1 ADET	UY-2007	SURUCU A
MOTOR	MOTOR-A'	X	YOK	25 cm	X	YEŞİL-SİYAH	1 ADET	UY-2007	SURUCU A'
MOTOR	MOTOR-B	X	YOK	25 cm	X	B MAVİ-B KIRMIZI	1 ADET	UY-2007	SURUCU B
MOTOR	MOTOR-B'	X	YOK	25 cm	X	MAVİ-KIRMIZI	1 ADET	UY-2007	SURUCU B'
MAVİ KLEMENS	ON-OFF (COM)	Net 21	UY-3010	15 cm	0,5 mm2	KAHVERENGİ	1 ADET	LEHİM	ON-OFF (COM)
MAVİ KLEMENS	ON-OFF(INO)	Net 49	UY-3010	15 cm	0,5 mm2	KAHVERENGİ	1 ADET	LEHİM	ON-OFF(INO)
MAVİ KLEMENS	ON-OFF (NOTR LAMBA)	Net 50	UY-3015	11 cm	0,5 mm2	MAVİ	1 ADET	LEHİM	ON-OFF (NOTR LAMBA)
YEŞİL KLEMENS	POT. ANALOG	Net 40	UY-3010	10 cm	0,5 mm2	KAHVERENGİ	1 ADET	LEHİM	POT. ANALOG
YEŞİL KLEMENS	POT. +5V	Net 6	UY-3010	11 cm	0,5 mm2	KAHVERENGİ	1 ADET	LEHİM	POT. +5V
YEŞİL KLEMENS	POT. (GND)	Net 47	UY-3010	8 cm	0,5 mm2	MAVİ	1 ADET	LEHİM	POT. (GND)
SICAKLIK SENSÖR		Net 20	1638	110 cm	0,5 mm2	KAHVERENGİ	1 ADET	UY-3010	ON-OFF (COM) [MAVİ KLEMENS DİŞİ]
REZİSTANS	REZİSTANSTAN	Net 35	METAL (0,5-1,5) SİLİKON	11 cm	1,5 mm2	KAHVERENGİ	1 ADET	METAL (0,5-1,5) SİLİKON	REZİSTANSTAN
REZİSTANS	REZİSTANSTAN	Net 46	METAL (0,5-1,5) SİLİKON	11 cm	1,5 mm2	KAHVERENGİ	1 ADET	METAL (0,5-1,5) SİLİKON	REZİSTANSTAN
REZİSTANS	REZİSTANSTAN	Net 42	METAL (0,5-1,5) SİLİKON	11 cm	1,5 mm2	KAHVERENGİ	1 ADET	METAL (0,5-1,5) SİLİKON	REZİSTANSTAN
REZİSTANS	REZİSTANSTAN	Net 11	METAL (0,5-1,5) SİLİKON	11 cm	1,5 mm2	KAHVERENGİ	1 ADET	METAL (0,5-1,5) SİLİKON	REZİSTANSTAN
REZİSTANS	REZİSTANSTAN	Net 39	METAL (0,5-1,5) SİLİKON	11 cm	1,5 mm2	KAHVERENGİ	1 ADET	METAL (0,5-1,5) SİLİKON	REZİSTANSTAN
REZİSTANS	REZİSTANSTAN	Net 34	METAL (0,5-1,5) SİLİKON	11 cm	1,5 mm2	KAHVERENGİ	1 ADET	METAL (0,5-1,5) SİLİKON	REZİSTANSTAN
REZİSTANS	REZİSTANSTAN	Net 36	METAL (0,5-1,5) SİLİKON	11 cm	1,5 mm2	KAHVERENGİ	1 ADET	METAL (0,5-1,5) SİLİKON	REZİSTANSTAN
REZİSTANS	REZİSTANSTAN	Net 7	METAL (0,5-1,5) SİLİKON	11 cm	1,5 mm2	KAHVERENGİ	1 ADET	METAL (0,5-1,5) SİLİKON	REZİSTANSTAN

Electrical Technical Table and Information

Product Code	Power	Supply Voltage	Cable cross section H05RR - F	Frequency	Pulled Amps
EDGAT47	3700 W	220-240 VAC	3 x 2,5 mm ² TTR	50-60 hz	16 A
EDGAT63	6634 W	380-415 VAC 3N PE	5 x 2,5 mm ² TTR	50-60 hz	30 A



- The device must be connected to the electrical installation in accordance with the electrical standards of the country you are using.
- Make sure that the device's ground line is connected to a suitable automatic fuse and secure it in a place where you can easily access this fuse. Connect your insurance according to the values in the table.



- The given cable cross-sectional values are valid for the installation and this device.
- It is necessary to have a ground line and a leakage current relay in the electrical installation to be pulled.
- Withdrawal of electrical wiring belongs to the customer.
- The cable should be pulled so that the electrical panel can be reached.
- If there is a high voltage risk in the area where the device is located, it is recommended to have an energy stabilizing regulator. Otherwise, an excessively high voltage will damage the resistors.

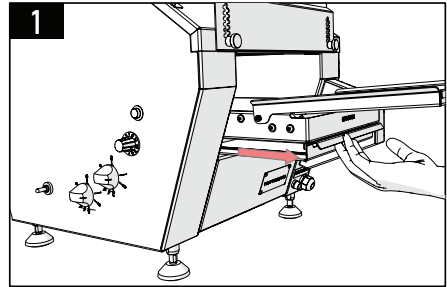
What to take care of before cleaning and maintenance.



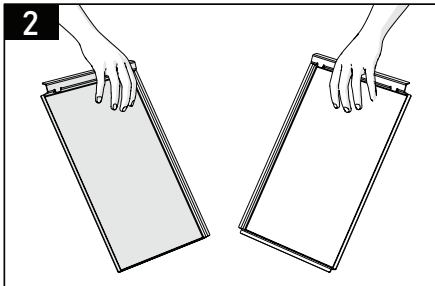
- Turn off the main supply electrical connection before cleaning the device. Wait for the device to cool down.
- Absolutely do not carry out maintenance while there is electricity on the device.
- Wipe the device with a cloth soaked in warm soapy water.
- No acid-containing chemicals should be used on the stainless surface of the device during cleaning.
- Never clean your device with compressed water or compressed steam. Otherwise, you may cause a failure of the resistor and electrical device.
- When cleaning the device, do not let water in.
- In case of a dangerous situation on the device, please notify the authorized service.
- Clean the waste accumulated in the cooking chamber of the device.
- For cleaning stainless steel, do not use general steel abrasives, scrubbing pads, brushes, or detergent products containing abrasives.



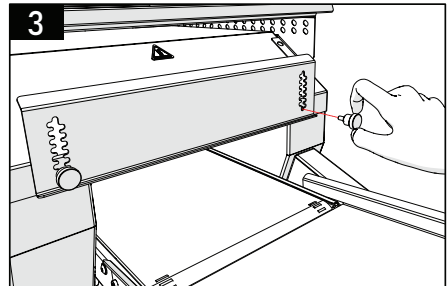
ATTENTION
Do not clean the
device before it
cools down.



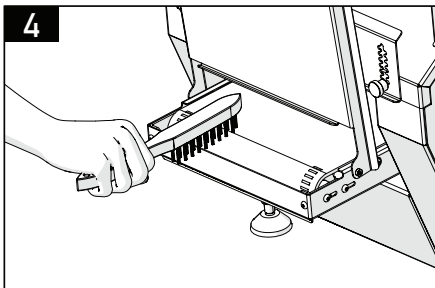
The crumb trays are removed.



Crumb trays are thoroughly cleaned.



Remove and clean the heat shields.

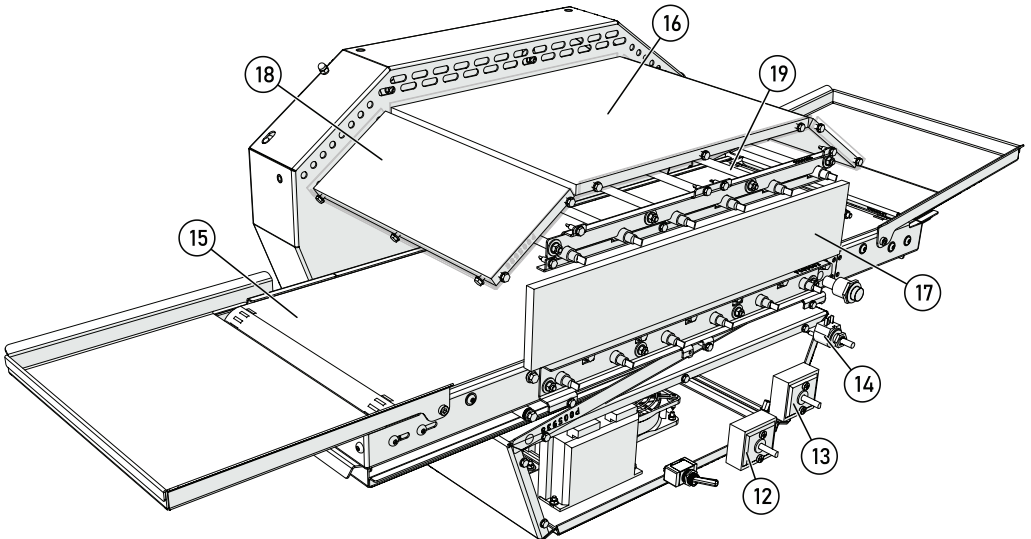
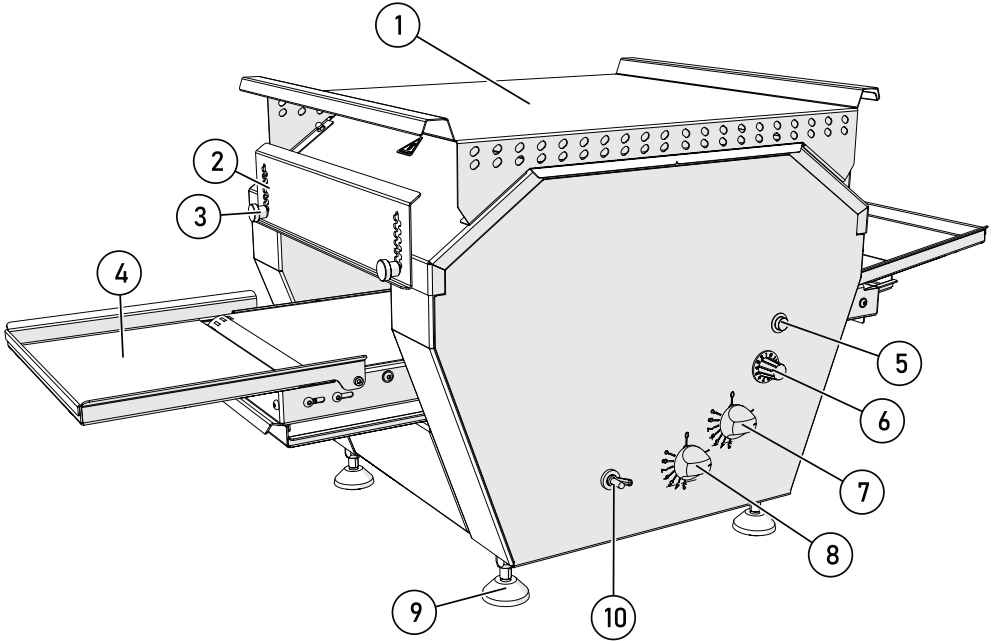


You can clean it with a wireband brush.

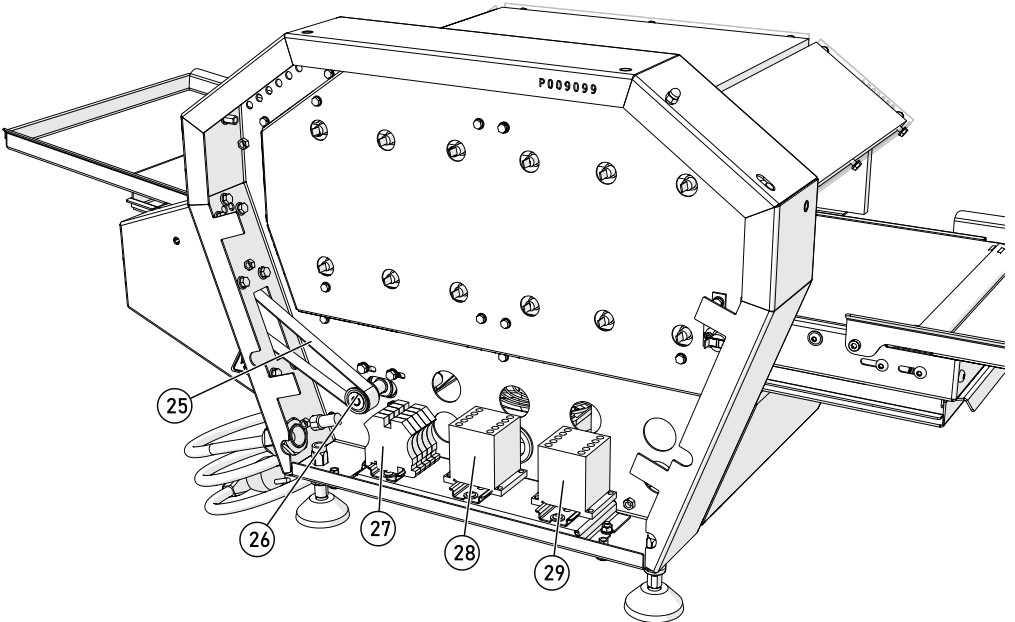
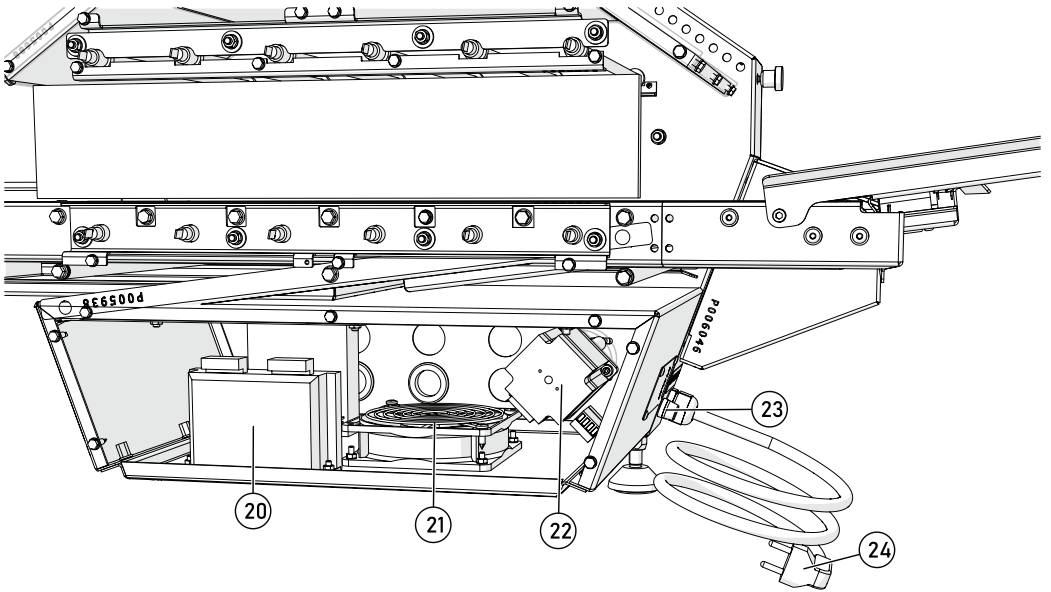


- Do not use corrosive chemicals and steel cleaning materials when cleaning.
- Please do not contact the hot surface directly.

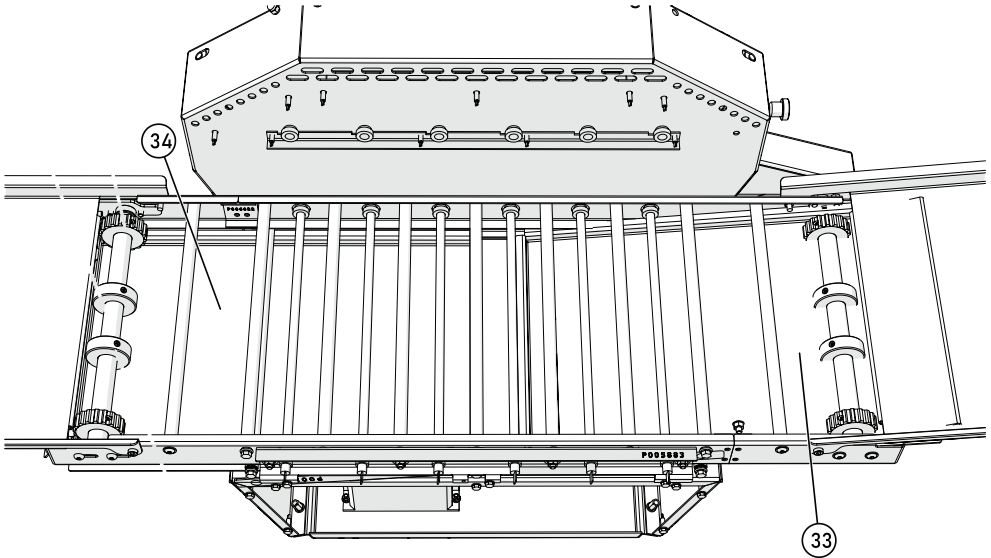
Spare Parts List EDGAT47



Spare Parts List EDGAT47



Spare Parts List EDGAT47



NO	TRACK CODE	EXPLANATION
1	P006054	upper service rack
2	P006052	Adjustable Air Curtain Sheet
3	P001890	Heat Protection Shield
4	P006047	Feeding unit sheet
5	P016210	Key Pit Type
6	P003607	Potentiometer Resistance indicator
7	P038468	Knobs
8	P038468	Knobs
9	P006073	Plastic Rubber Table Leg Orange
10	P016380	Cover

NO	TRACK CODE	EXPLANATION
12	P001490	regulator
13	P001490	regulator
14	P002342	Potentiometer
15	P005782	wireband
16	P005689	320x272x10 top cover insulation
17	P005893	441x81x10 Solid insulation
18	P005704	272x108x10 top cover insulation
19	P016166	Rod Heater

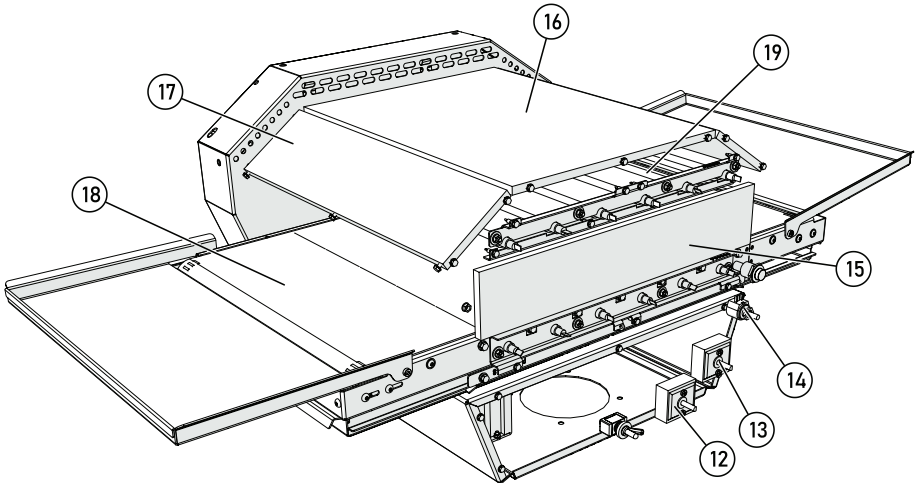
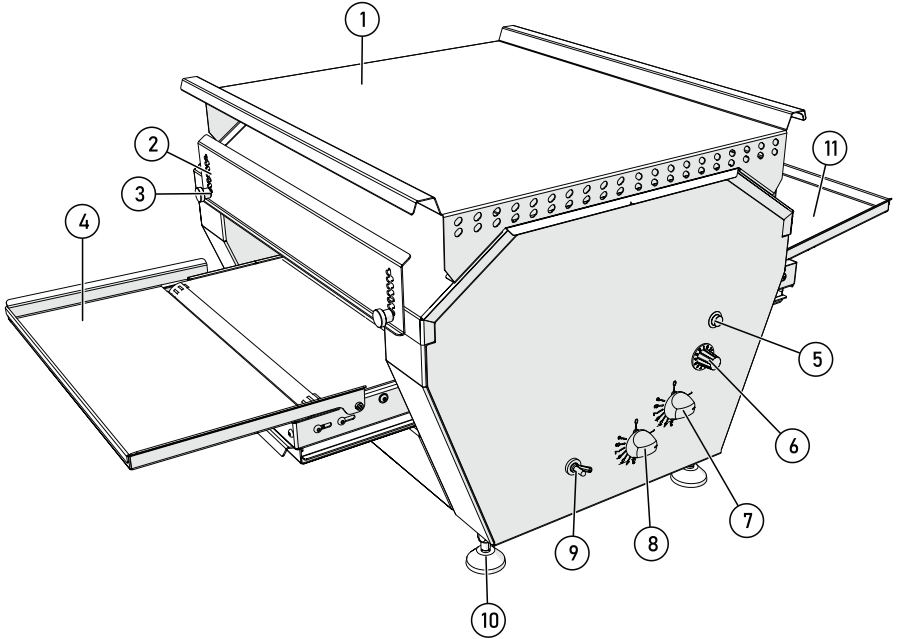
Spare Parts List EDGAT47

NO	TRACK CODE	EXPLANATION
25	P005781	Converter Tape
26	P006001	Pulley Channel
27	P000386	terminal
28	P000808	contactor
29	P000808	contactor

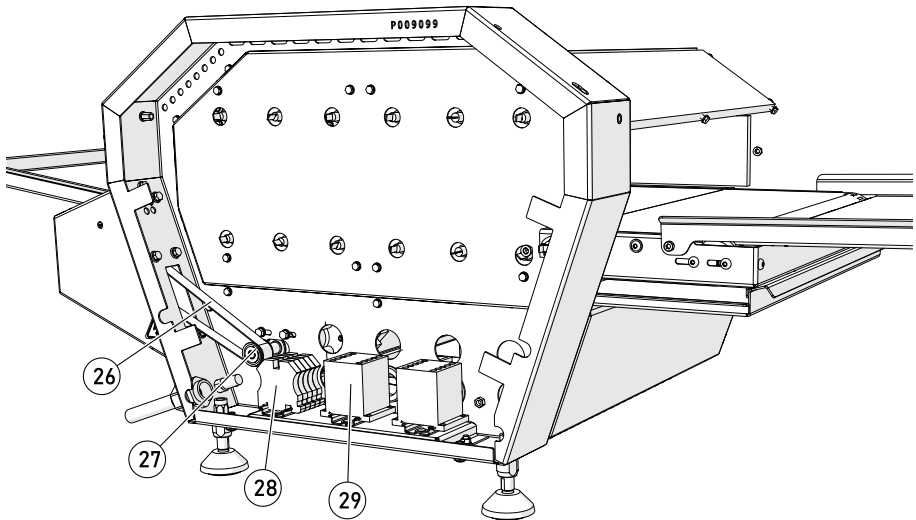
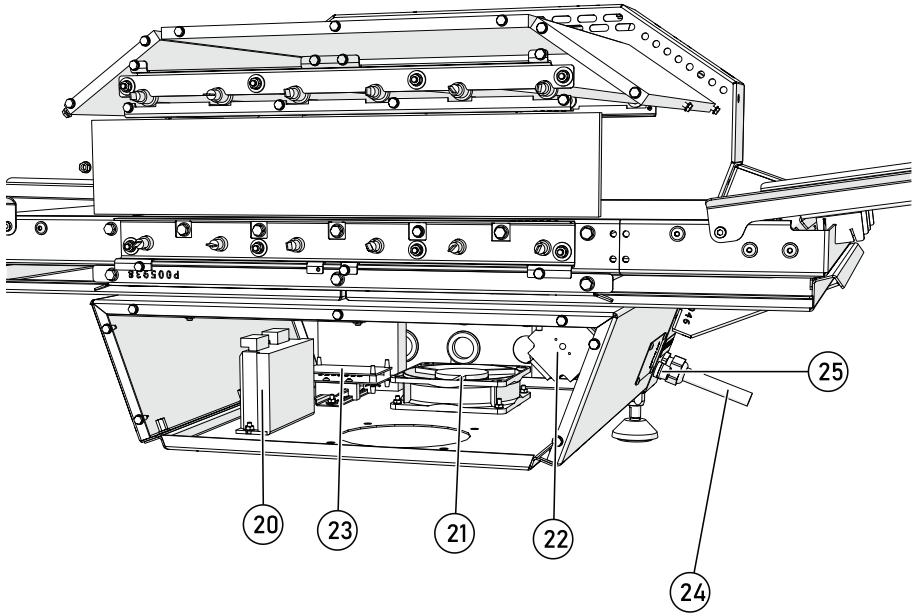
NO	TRACK CODE	EXPLANATION
33	P006056	Conveyor Cleaning Tray
34	P006044	Conveyor Cleaning Tray

NO	TRACK CODE	EXPLANATION
20	P002296	Engine Driver
21	P006004	Fan
22	P023197	Stepper Motor
23	P004672	Fuse Box 6x30
24	P005849	power cord

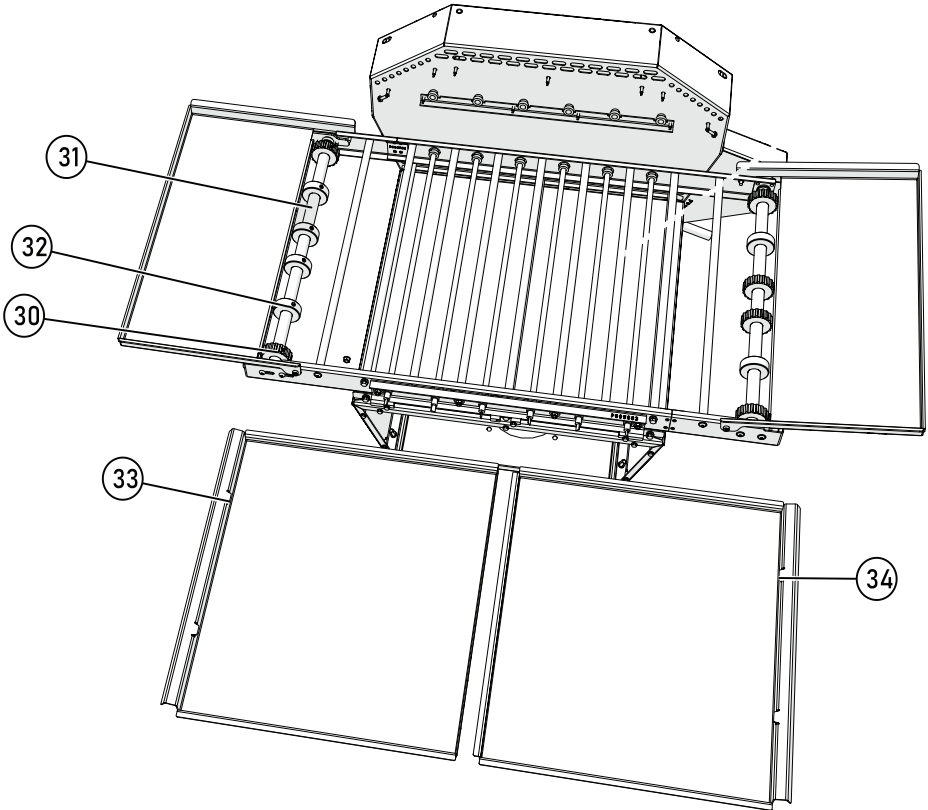
Spare Parts List EDGAT63



Spare Parts List EDGAT63



Spare Parts List EDGAT63



NO	TRACK CODE	EXPLANATION
1	P008989	Upper Service Rack
2	P008988	Adjustable Air Curtain Sheet
3	P001890	AISI 303 Ø20x28 screw
4	P009014	Feeding unit sheet
5	P016210	Key
6	P003607	Potentiometer Resistance indicator
7	P038468	Knobs
8	P038468	Knobs
9	P016380	direction switch
10	P006073	Rubber Foot
11	P009014	Feeding Unit Sheet

Spare Parts List EDGAT63

NO	TRACK CODE	EXPLANATION
12	P001490	regulator
13	P001490	regulator
14	P002342	Potentiometer
15	P005893	441x81x10 Solid insulation
16	P008993	432x320x10 top cover insulation
17	P009021	432x108x10 top cover insulation 2
18	P009013	wireband
19	P014284	Rod Heater

NO	TRACK CODE	EXPLANATION
20	P002296	Engine Driver
21	P006004	ventus
22	P023197	Stepper Motor
23	P006059	motherboard
24	P009101	power cable 2,5x5 2 METERS
25	P004672	Fuse Box 6x30

NO	TRACK CODE	EXPLANATION
26	P005781	Trigger 600mm-15mm
27	P006001	timing pulley wedge
28	P000386	terminal
29	P000808	contactor

NO	TRACK CODE	EXPLANATION
30	P005655	AISI 303 Ø46
31	P014302	belt free shaft
32	P005654	AISI 303 Ø41,69 Screw
33	P008990	Conveyor Waste Tray
34	P008987	Conveyor Waste Tray



