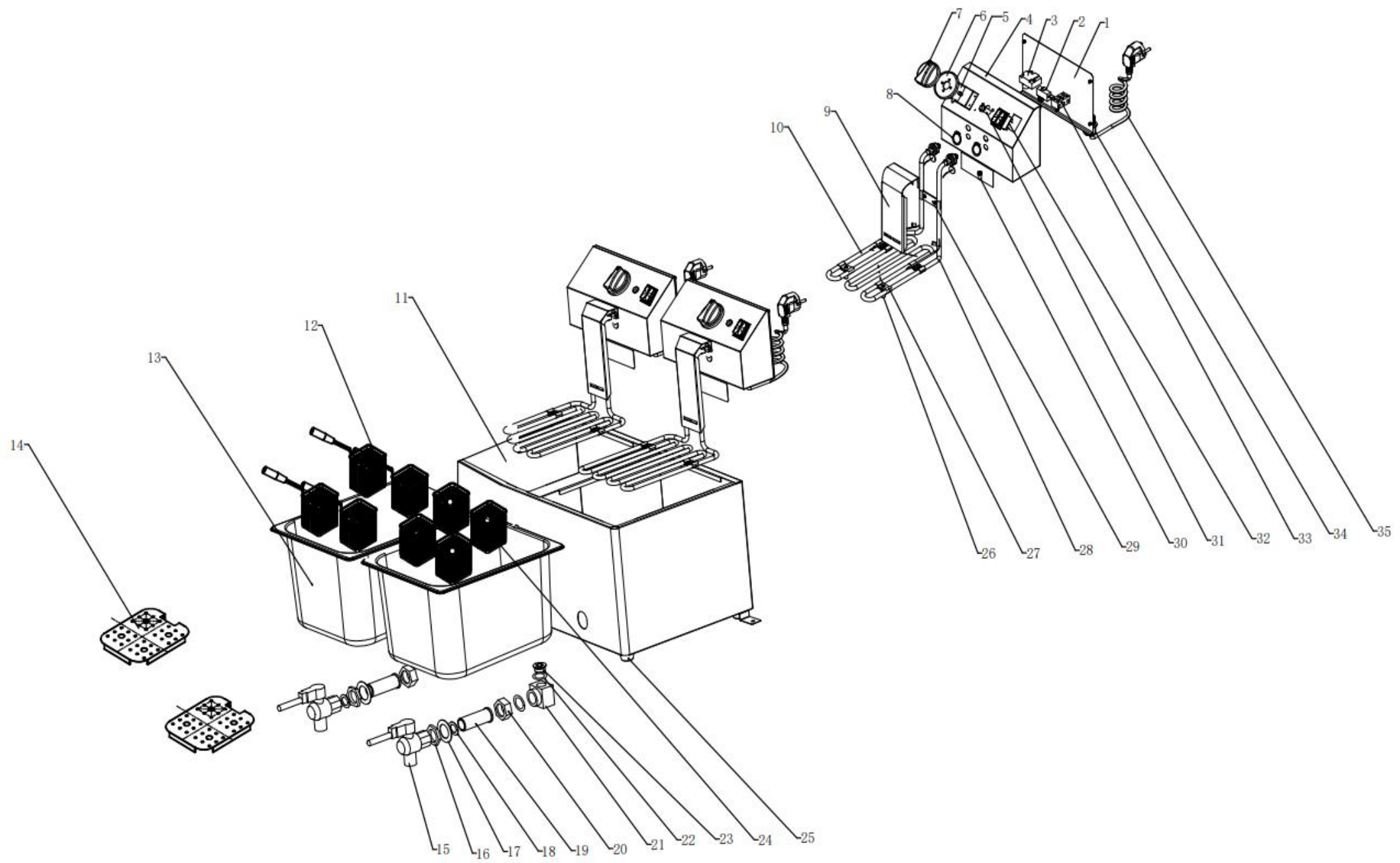


EXPLODED DRAWING FOR ENH8+8



No.	Material code	Name	Qty	
1	2.02HDF8020702	Electrical Box Rear Seal Plate	2	
2	1.05.035011HDFMS116	Microswitch	2	
3	1.06.125171305	Thermostat	2	
4	2.02HDF80007ZZ	Electrical box assembly	2	
5	1.06.1101713-02	Thermostat	2	
6	3.ZCK165BT20010101-1	Knob Ring	2	
7	3.HDF4210000	Knob	2	
8	2.000000017	Circlip	4	
9	2.02HDF8220702	Heating Circle Guard	2	
10	1.07.HDF8141903	Heating Tube	2	
11	2.02HDF88C010701	Frame	1	
12	2.HP8CT020901	Basket (Left)	4	
13	2.02HDF8100700	Oil press basin	2	
14	2.HP8CT010701	Boiling plate	2	
15	2.000000018	Faucet	2	
16	3.0000421	Seals	2	
17	2.02HDF8230001	Faucet washers	2	
18	2.YZLFJ-19110200	And cap	2	
19	2.YZLFJ-17110200-1	Movable Joints and Caps	2	
20	2.HDF8C14030201	movable joints	2	
21	2.YZLFJ-17110200-2	Fuel nozzle connector	2	
22	3.0000404	Seal ring	2	
23	2.000000005	parallel cap	2	
24	2.HP8CT020901	Basket (Right)	4	

25	3.0000161	Rubber feet	4	
26	2.HDF8A120701	Support post	4	
27	2.02HDF8050701	Sensor bar fixing piece	8	
28	2.000000015	Snap wire	12	
29	2.02HDF8070701	Heating Tube Pressure Plate	4	
30	2.000000003	Positioning pin	4	
31	1.03.00020017	Indicator Lamp	2	
32	1.05.093121R599KDFT1FAJKA	Rocker Switch	2	
33	1.03.080000010	Wiring Terminal	2	
34	1.03.00040001	Wire Clip	2	
35	1.01.01.20046105	Power Cord	2	