

COLD DISPLAY UNIT USER MANUEL



Model Model	Ürün Kodu Product Code	Sogutma Gazı Cooling Gas	Ebat (mm) Dimensions
SKVND613	1.001.02.03.01.01.01	Bombe Camlı Teşhir Ünitesi Display unit with curved glass	1395x400x250
SKVND813	1.001.02.03.03.01.02	Bombe Camlı Teşhir Ünitesi Display unit with curved glass	1750x400x250

Safety Tips:

Emplace it on a flat, stable surface with the balance.

Installation and, if necessary, repairs should be performed by an authorized service representative/authorized technician. Do not remove any components or service panel from this product.

Consult Local and National Standards to comply with:

Occupational Health and Safety Legislation

BS EN Code of Practice

Fire precautions

IEE Cabling Regulations

Building Regulations

DO NOT use a jet/pressure washer to clean the device.

DO NOT use the device outside.

DO NOT use this device to store medical supplies.

DO NOT use electrical appliances (eg heaters, ice cream makers, etc.) inside the appliance.

DO NOT force or consolidate anything heavy on the pedestal, drawers or doors.

DO NOT allow it to come into contact with oil or sticky plastic components or the door seal. If contact occurs, clean immediately.

Bottles with a high alcohol content should be closed and placed vertically in the refrigerator.

Always carry and store the device in a vertical position and move it by holding the base of the device.

Always turn off and disconnect the unit's power supply before cleaning.

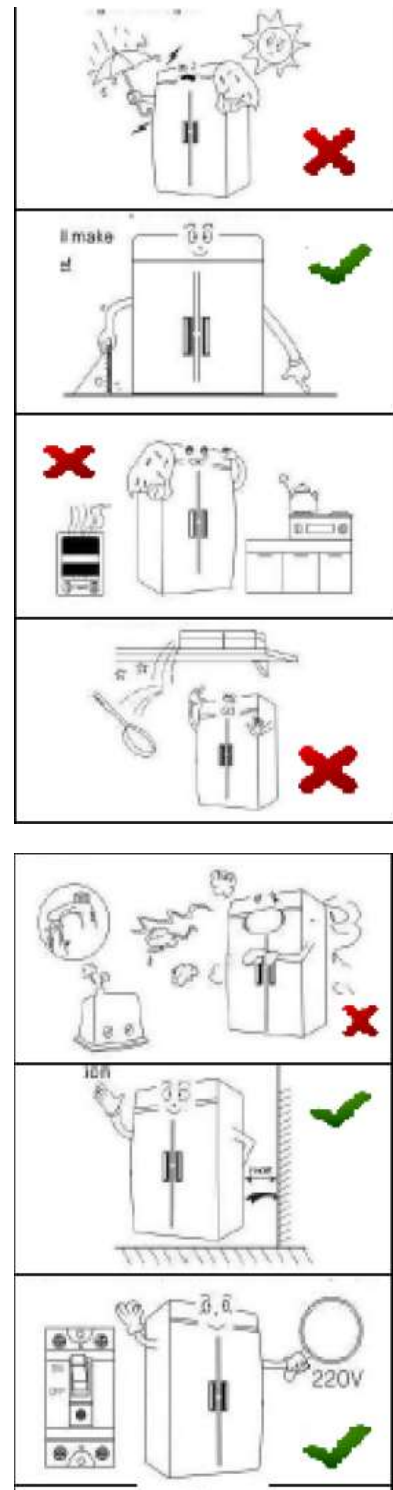
Keep all packaging away from children. Dispose of the packaging in accordance with local authority regulations.

If the power cord is damaged, it must be replaced by a technician to avoid a hazard.

Product Description:

SKVND613 – GN 1/3 Container Refrigerated Countertop/Service Preparation

SKVND813 - GN 1/3 Container Refrigerated Countertop/Service Preparation



Promotion

Please take a few moments to read this manual carefully. Correct maintenance and operation of this machine is the best possible performance of your product.

Package Included

The following are included:

Refrigerator

Bathtub X 6 Side glass panels x 2

Plugs User guide Adjustable feet x 4

Setup



Note: If the unit has not been stored or transported in an upright position, allow it to stand upright for approximately 12 hours before operating. If in doubt, be sure to wait.

1. Unpack the device. Make sure all protective plastic films and coatings are thoroughly cleaned from all surfaces.
2. Check all parts
3. Leave a distance of 20 cm (7 inches) between the unit and walls or other objects for ventilation. Increase this distance if the obstacle is a heat source.
4. Nothing heavy should be placed on the upper cambered glass.
5. Plug in and check the front digital panel.



Note: Before using the device for the first time, clean the shelves and inside with soapy water.



1 Digital panel thermostat 2 On/off power switch

3 Sliding front panel 4 Air suction 5 Side panels

6 Body 7 camber glass phone

Food Storage

To get the best results from your device, follow these instructions:

- Store foodstuffs only when the appliance has reached the correct operating temperature.
- Make sure that the gastronorm compartments are always full, even if the gastronorms are unused or empty. Empty compartments will greatly reduce the efficiency of the device.
- Do not block the fans inside the device.

Start-Up:

1. Make sure the power switch is set to [O] and plug it in
2. Turn on the power. The device displays the current temperature inside on the first screen.

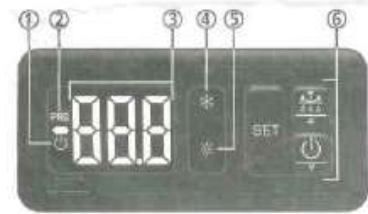
Control Section:

Setting the Working Temperature

SET key: Press for 5 seconds to modify the set point (SP). Press for 10 seconds to go to the programming menu. In the programming menu, go to the level displayed or accept the new value while setting a parameter.

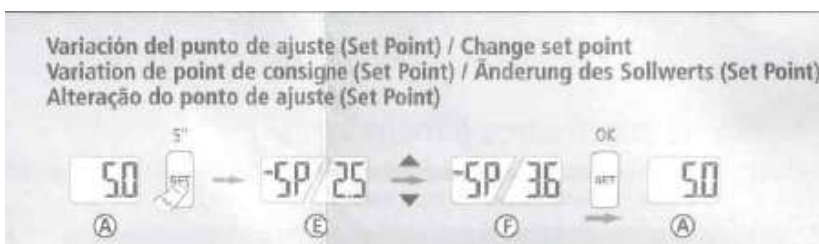
Up key ▲ / ☀: Pressing for 5 seconds starts/stops defrosting. In programming menu, allows you to scroll through the various levels or, during the setting of a parameter, to change the value.

Down key ▼ / ⏻: Pressing for 5 seconds activates Standby mode, pressing for 2 seconds returns the equipment to normal mode. In Standby mode, the equipment performs no actions and only the ⏻ indicator is displayed on the screen. In programming menu, allows you to scroll through the various levels or, during the setting of a parameter, to change the value.




- | | | |
|--|---|--|
| 1: Stand-by activo
Stand-by mode
Stand-by aktiv | 3: Pantalla / Display
Ecran / Anzeige / Visor | 5: Relé RES activo
RES relay ON
Relais RES activé
Relais RES aktiv
Relé RES activo |
| 2: Modo programación
Program Mode
Mode programmation
Programmiemodus
Modo de programação | 4: Relé COOL activo
COOL relay ON
Relais COOL activé
Relais COOL aktiv
Relé COOL activo | 6: Teclado / Keyboard
Touches / Tastatur |

SET key / ⏻: Pressing for 5 seconds activates Standby mode, pressing for 2 seconds returns the equipment to normal mode. In Standby mode, the equipment performs no actions and only the ⏻ indicator is displayed on the screen. Pressing for 10 seconds goes to the programming menu. Pressing for 5 seconds in the programming menu goes to the level displayed on the screen or, during the setting of a parameter, accepts the new value. In the programming menu, a short press allows you to scroll through the various levels or, during the setting of a parameter, to increment the value. When upper limit is reached, it will start again from the lower limit.

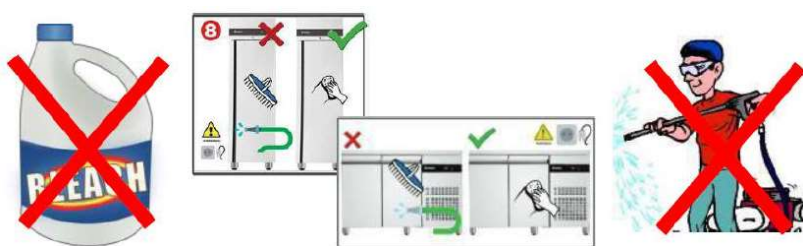


Manual Defrost

Press and hold the defrost button  The Defrost light comes on for 2 seconds to start a manual defrost.

Cleaning, Care and Maintenance

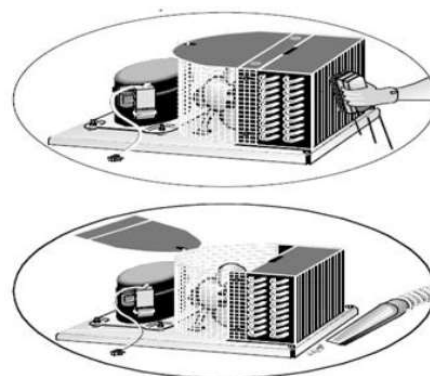
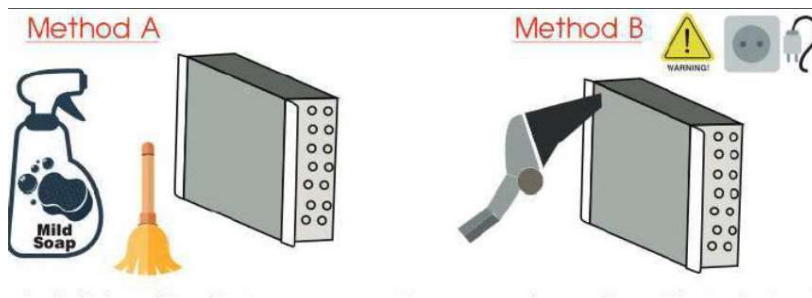
- Turn off and disconnect from power source before cleaning. Clean the inside of the device as often as possible.
- Do not use abrasive cleaning agents. These can leave harmful residues.
- Clean the door seal with water only.
- Always dry after cleaning.
- Do not allow the water used for cleaning to flow into the evaporation pan from the drain hole.
- Be careful when cleaning the back of the device. Sharp edges can cut.
- If necessary, a technician should carry out repairs.



Cleaning the Condenser

Periodic cleaning of the capacitor can extend the life of the device.

You need maintenance every 3 months.



Troubleshooting

The following sounds can be heard while your refrigerator is operating. These Normal.

Humming sound: A sound is heard in the refrigerant pipes during the first operation, when the gas decides to circulate completely in the system.

Vibrating/ Airflow or humming sound:

Fans/compressor speed regulation auto-adjusts to achieve performance

Hissing/Crying sound: Vibration of refrigerant flow, movement of refrigerant circulating lines, or sound made by spare parts placed on the refrigerator

Squeaking / Cracking / Dripping sound: It is produced during the melting of ice from the ice maker (evaporator) mold.

Squeaky/Gurgling/Boiling sound: Water dripping onto heater during defrost cycle

Hashing sound: Constriction/expansion of the inner walls, especially during the initial cooling, friction occurs.

Water flowing sound: It can be heard when the water melts during the defrost cycle and the flowing water enters the drain pan

BEFORE CALLING SERVICE

Your refrigerator may be equipped with an automatic fault monitoring system to detect and diagnose problems at an early stage.

If your device malfunctions, please check the table below before calling the Helpline.

Fault	Probable Cause	Action
if the device does not work	open plug unit and cable	check that the unit is properly installed and turned on
	blown fuse in damaged plug	call GGM representative or authorized technician
	power source	replace the fuse check the power supply
	internal wiring error	call GGM representative or authorized technician
Condenser too high temperature / Condenser with dust / Condenser low temperature	the device is running, but there is too much ice in the evaporator, the temperature drops	defrosting the device
	Jammed	call GGM representative or authorized technician
	doors not closed properly	Check that the doors are closed and the gaskets are damaged.
	the device is near a heat source or the airflow into the condenser is interrupted	Check the cooling of the refrigerator and move to a suitable area
	ambient temperature too high	increase ventilation or move the device to a cooler location
	Unsuitable foodstuffs are stored in the device	Extremely hot foodstuffs and inadequate storage conditions should not be placed.
	device is overloaded	reduce the amount of food stored in the appliance put the device up to its capacity
device is leaking water	if the device is not properly placed	adjust the screw feet to level and level with the balance
	discharge outlet is clogged	clear the output
	if the movement of water to the drain is prevented	clean the floor of the device
	damaged	call GGM representative or authorized technician
	a dripping tray	empty the dripping tray
device unusually makes loud sounds	loose the screw	Check and tighten all screws
	the device is not installed in a flat or stable position	check the installation location and replace if necessary

Fault Messages

L5 - Access Code (Password) is necessary.

Def - Informs that a defrost is running (Only if parameter is d2 = 2)

E1 – Prop 1 fault. (Open circuit, pass, NTC: heat > 110 °C or <-55°C

PTC: heat > 150 °C or < 58 °C) – (should be equalized at °F

WARNING:



Snow on the device shows that it is melting. It is not a fault description. It only shows the periodic flow of the device.

Technical Features:

Model	Voltage	Power	Temperature Range	Capacity	Cooler	Dimensions (HxWxD) mm
SKVND613	230V 50Hz	170W	Between +4°C / +8°C	GN 1/3 Tub:6	R134a 120g	1395x400x250
SKVND813	230V 50Hz	200W	Between +4°C / +8°C	GN 1/3 Tub:8	R134a 130g	1750x400x250

Electrical Installation

The plug must be connected to a suitable electrical outlet. Wired the devices as follows:

- Live wire (brown color) Neutral to terminal marked L
- Cable (blue color) terminal marked N Grounding
- Terminal with wire (green/yellow color) marked E

All the devices must be grounded using a special grounding circuit.

Have a qualified licensed electrician.

Electrical isolation points must be kept clear of any obstructions. They should be easily accessible in case of any emergency disconnection.

WARNING:

The WEEE logo on this product or its documentation indicates that the product should not be disposed of as household waste. To help prevent potential harm to human health and/or the environment, the product should be disposed of in an approved and environmentally safe recycling process. For more information on how to dispose of this product correctly, contact the product supplier or your local waste disposal authority.

The parts have undergone stringent product testing to comply with regulatory standards and specific actions set by international, independent and federal authorities.

The products are approved to carry the following symbols.



All rights reserved. No part of these instructions may be reproduced or transmitted in any form or by any means, electronic, mechanical, photocopying, recording or otherwise.