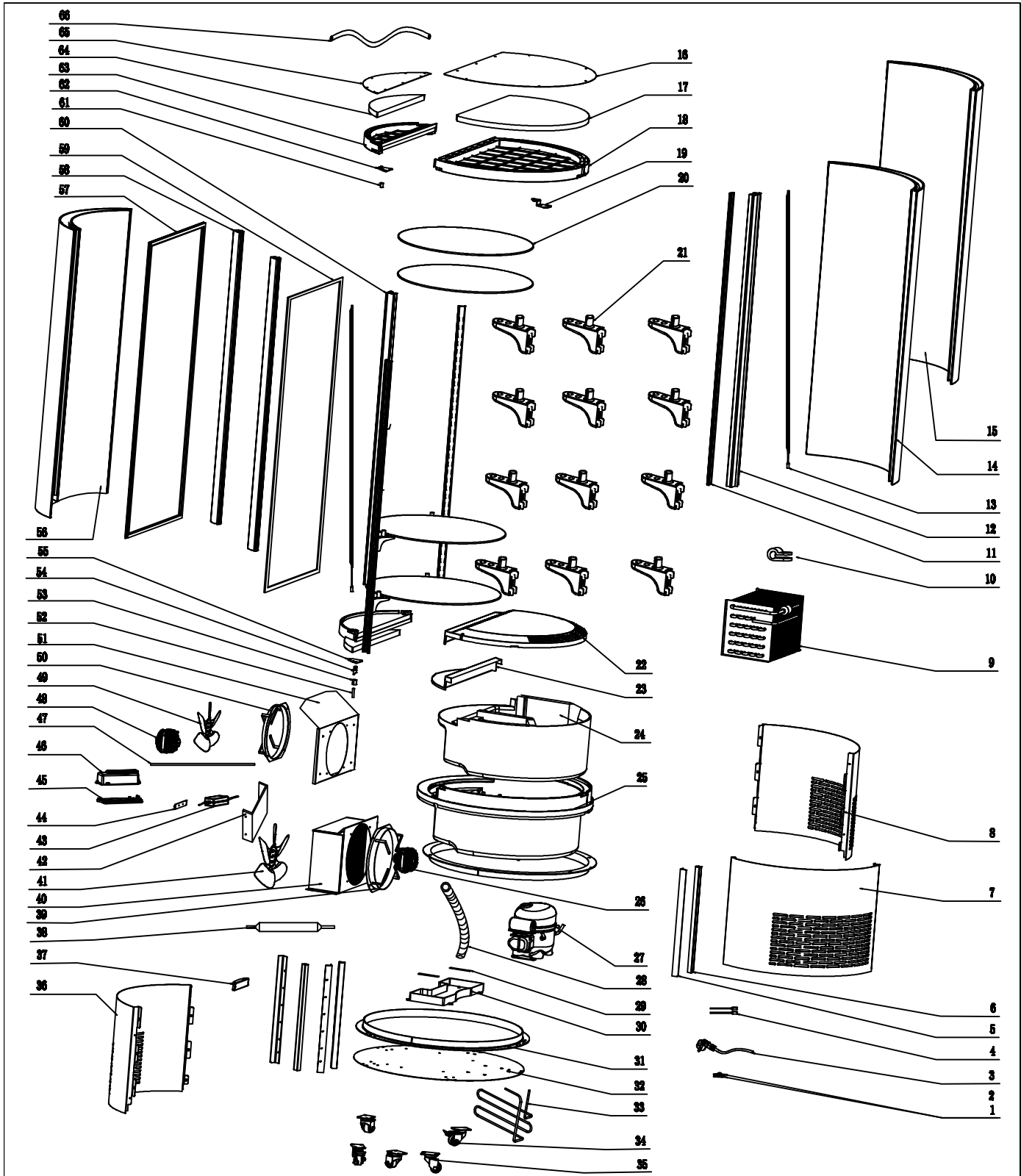


# ggm gastro



	NO	Description	Qty	NO	Description	Qty	NO	Description	Qty	
PVNR	1	Line clamp plate	1	24	Middle Insulation	1	47	Capillary	1	
	2	Line clamp Cover	1	25	Plastic base	1	48	Evaporator Motor	1	
	3	Power Cord	1	26	Condenser base	1	49	Evaporator blade	1	
	4	LED card	2	27	Compressor	1	50	Evaporator blade flange	1	
	5	Angle Iron	5	28	Water pipe	1	51	Evaporator finser	1	
	6	Decorating strip	3	29	Fixer	2	52	Door shaft	1	
	7	Left panel	1	30	Water receiver	1	53	Bottom door closer	1	
	8	Right panel	1	31	Angle iron flange	2	54	Top door closer	1	
	9	Evaporator	1	32	Angle plate	1	55	Hinge fixer	1	
	10	Line clamp	3	33	Muffler	1	56	Curved door glass	1	
	11	Bracket aluminum strip	3	34	Brake casters	2	57	Door seal	1	
	12	The middle column	1	35	Front caster	2	58	Door Pole	2	
	13	LED light	2	36	Front panel	1	59	Glass fixed block	1	
	14	Left Glass	2	37	Switch cover	1	60	Side Pole	2	
	15	Right Glass	1	38	Dry filter	1	61	Hinge sleeve	1	
	16	Top Cover	1	39	Condenser blade flange	1	62	Bottom shaft plate	1	
	17	Top Insulation	1	40	Condenser	1	63	Door Frame	1	
	18	Top Plastic Cover	1	41	Condenser blade	1	64	Door insulation	1	
	19	Top Hinge Fixer	1	42	Evaporator connecting plate	1	65	Door Cover	1	
	20	Glass Shelf	4	43	LED power	1	66	Water tube	1	
		21	Shelf	12	44	Digital Controller	1			
		22	Cover of air outlet	1	45	Base panel of controller	1			
		23	Plastic base Cover	1	46	Controller Cover	1			