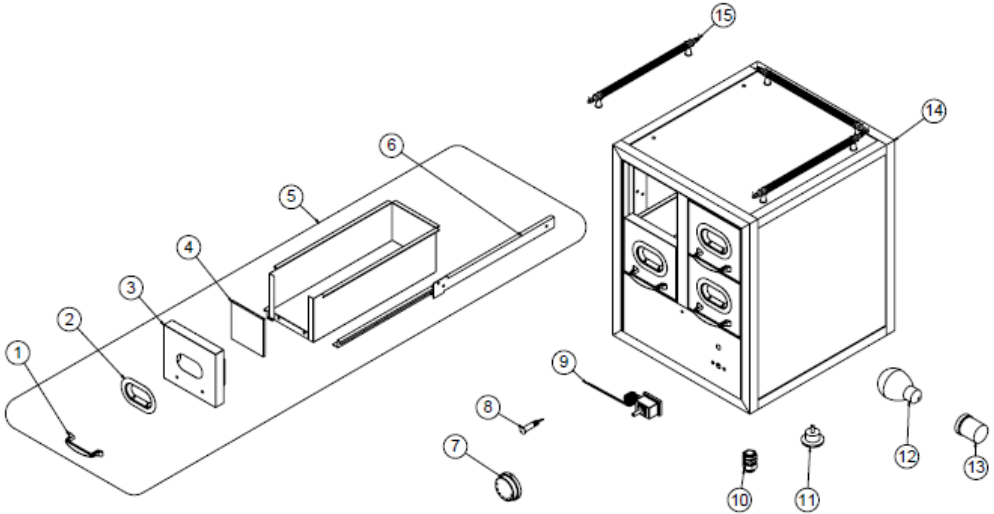


DRAWERS HEATED NUTS UNIT

G SPARE PART LIST-EXPLODING DRAWING

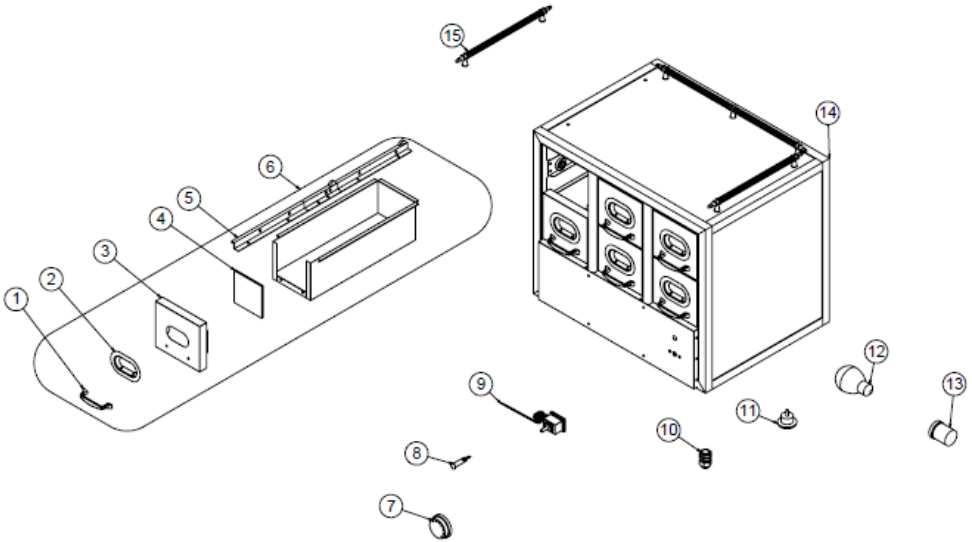


EMP.KU.01

PRODUCT CODE: EMP.KU.01		
NO	PRODUCT NAME	P.CODE
1	HANDLE	M.MUH-116
2	DRAWER FRONT DOOR YELLOW SHEET	YSC-GST.KU-LZ-0024
3	FRONT DRAWER SHEET	YSC-GST.KU-LZ-0006
4	DRAWER GLASS	M.CAM-GST-001
5	DRAWER INTERMEDIATE ASSEMBLY	ARA-GST.KU-0001
6	DRAWER RAIL	M.AKS-RAY-004
7	BUNMARIE BUTTON	M.AKS-DGM-001
8	RED SIGNAL LAMP	M.ELK-LMB-SNY-003
9	THERMOSTAT	M.ELK-MEK-TRM1-003
10	PLASTIC FITTING ORTAC	M.ELK-RKR-PLS-003
11	PRESSED CABLE	M.ELK-PWR-PBK-001
12	PLASTIC FEET	M.AKS-AYK-PLS-005
13	BULB	M.ELK-LMB-AMP-012
14	PORCELAIN HEAR	M.ELK-LMB-DUY-001
15	CHASSIS	-
16	BALCONY HANDLE	M.MUH-105

DRAWERS HEATED NUTS UNIT

G SPARE PART LIST-EXPLODING DRAWING



EMP.KU.02

PRODUCT CODE: EMP.KU.02		
NO	PRODUCT NAME	P.CODE
1	HANDLE	M.MUH-116
2	DRAWER FRONT DOOR YELLOW SHEET	YSC-GST.KU-LZ-0024
3	FRONT DRAWER SHEET	YSC-GST.KU-LZ-0006
4	DRAWER GLASS	M.CAM-GST-001
5	DRAWER INTERMEDIATE ASSEMBLY	M.AKS-RAY-004
6	DRAWER RAIL	ARA-GST.KU-0001
7	BUNMARIE BUTTON	M.AKS-DGM-001
8	RED SIGNAL LAMP	M.ELK-LMB-SNY-003
9	THERMOSTAT	M.ELK-MEK-TRM1-003
10	PLASTIC FITTING ORTAC	M.ELK-RKR-PLS-003
11	PRESSED CABLE	M.ELK-PWR-PBK-001
12	PLASTIC FEET	M.AKS-AYK-PLS-005
13	BULB	M.ELK-LMB-AMP-012
14	PORCELAIN HEAR	M.ELK-LMB-DUY-001
15	CHASSIS	-
16	BALCONY HANDLE	M.MUH-105

DRAWERS HEATED NUTS UNIT**H ELECTRIC CIRCUIT SCHEMA**



PRODUCT CODE	KW
EMP.KU.01 – EMP.KU.02	0,10

T	R1	L1
Thermostat (30-90°C)	lamp 0,10 W (220V)	Thermostat Signal Lamp