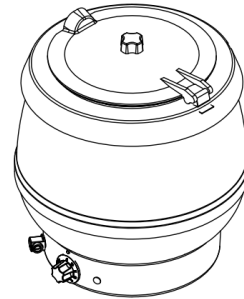


ggmgastro

SOUP KETTLE MODEL: SWSH10

OPERATION MANUAL FOR THE WET HEAT SOUP KETTLE

Specification: Capacity: 9 L
Voltage: 230V/50Hz/ 400W
N. Weight: 4.6kgs
Packing size: 355*355*410MM

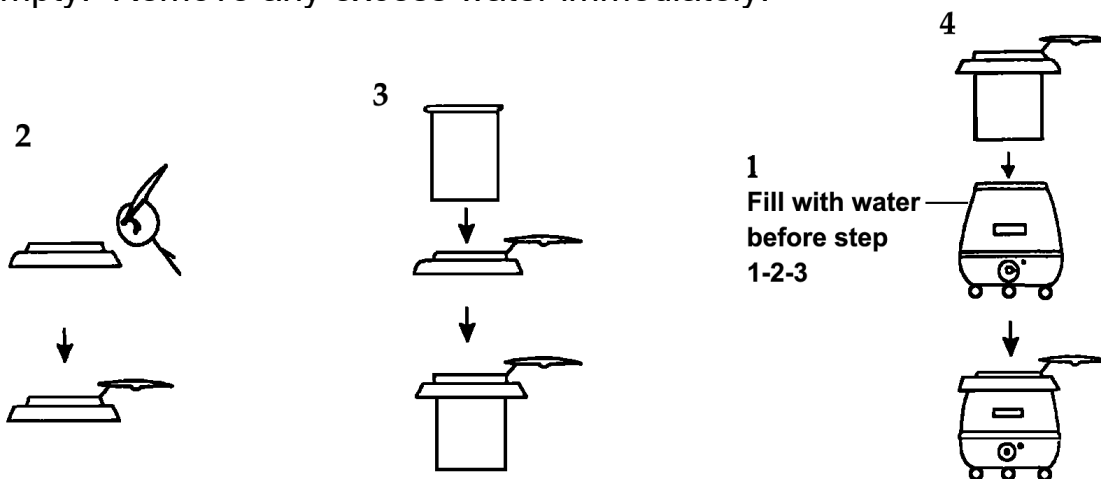


General Operating Instructions:

1. All foodservice equipment should be operated by trained personnel.
2. Remove all packaging materials before turning it on.
3. Place warmer on a level, stable non-combustible surface near the power source.
4. Plug the power cord into correct electrical voltage.
5. To warm precook food, please preheat warmer for about 30 minutes.

Operations:

1. Add clean hot water (0.6L) between the stainless steel liner and internal aluminum container before product set up. Do not overflow with water and under no circumstances should the stainless steel liner float up, even when empty. Remove any excess water immediately.



2. Preheat the water by place lid over the warmer with an empty food liner and set heat control knob to the maximum heat setting for the recommended time listed below.

20 minutes if RESERVOIR was filled with HOT water.

30 minutes if RESERVOIR was filled with COLD water.

3. Pour the precook food in to liner when it reach the boiling temperature.
4. Place lids over food as needed to maintain temperatures when food is not being served.
5. During normal operating for food holding, periodically remove liner and check water level. Add hot water if necessary. Stir occasionally.
6. A neon light will glow when the unit is turned on. Turn the dial to 0 to switch off when not in use. Unplug from the wall socket to isolate kettle from the electrical supply.

Warming and caution:

1. Always keep the removable hinged lid attached and in the closed position when not serving.
2. Never move or carry the kettle when unit is switch on, or containing hot food.
3. Spilled food should be removed immediately from all exterior surfaces. The stainless steel liner and lid are machine washable. The painted exterior and top collar should be wiped over with damp soapy cloth.
4. Ensure unit is unplugged when not in use, when filling and when being cleaned.
5. The kettle must not be cleaned with a high pressure jet.
6. Never immerse kettle in water as damage to the unit will result and the guarantee will be voided.
7. Warning this appliance must be earthed.
8. DO NOT OPERATE KETTLE EMPTY.