

# 40x33 FOOT CONTROL HANDWASH BASIN WITH PEDAL

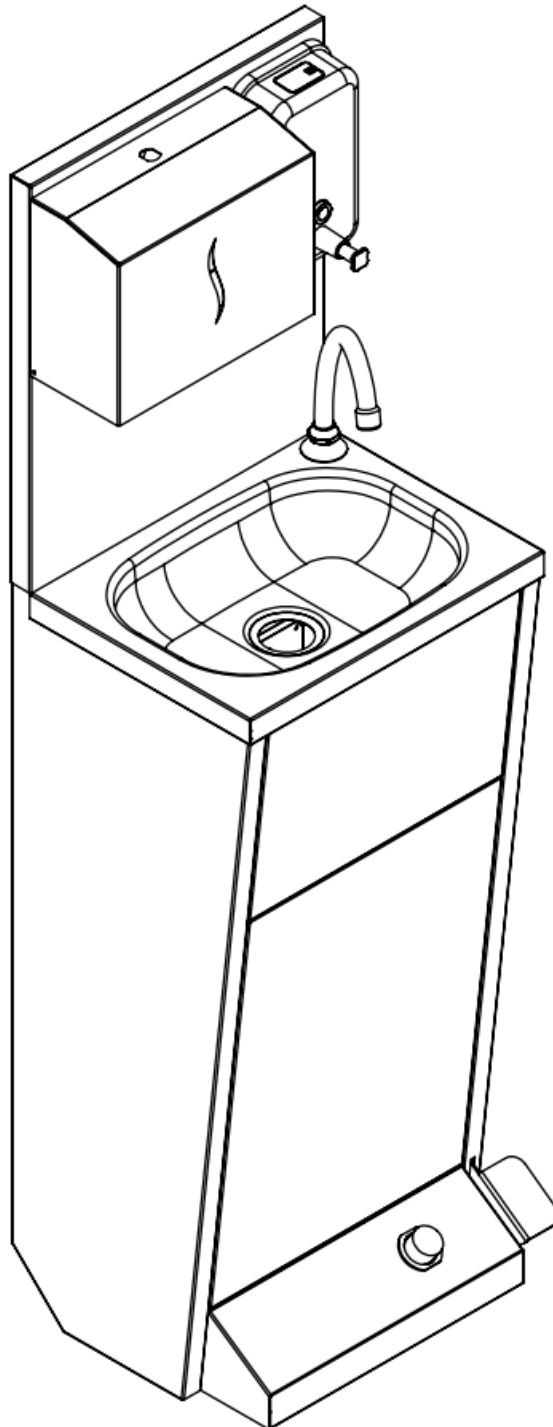
## INSTALLATION & USER MANUAL

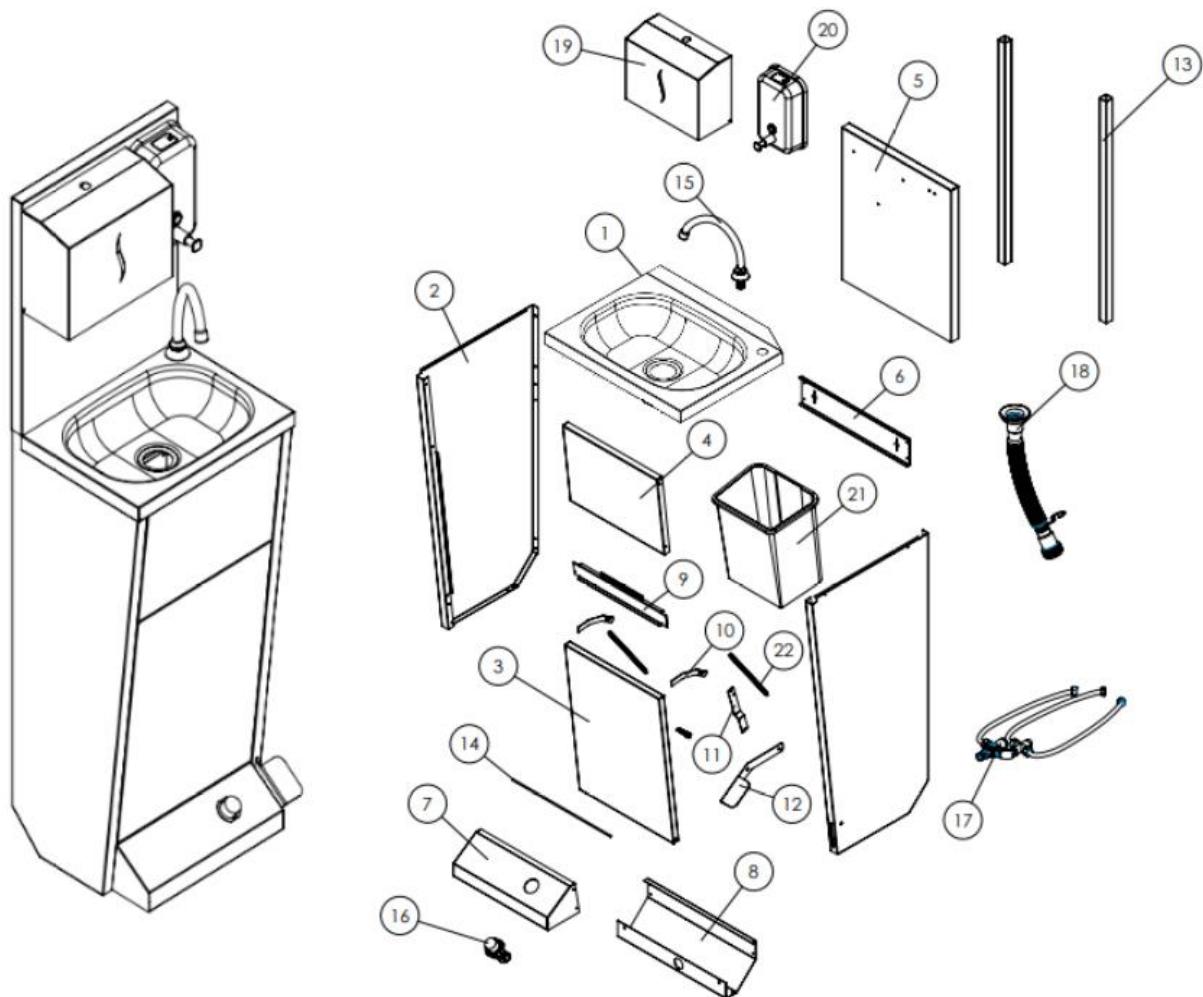
### TECHNICAL DATA

Dimensions: 400 x 327 x 1330 mm.

Raw material: AISI 304 Stainless steel.

Control type: Foot control.





Part No.	Part Name	Piece
1	Sink	1
2	Left&Right Panel	1
3	Garbage Bin Front Lid	1
4	Front Upper Panel	1
5	Backsplash	1
6	Rear Support Ledge	1
7	Valve Panel	1
8	Valve Panel Support	1
9	Inside Strengthening Part	1
10	Support Tools	2
11	Support Tools	2
12	Pedal	1
13	Backsplash Bars	2
14	Support Tools	1
15	Swivel Faucet	1
16	Foot-control Valve	1
17	Double Inlet	1
18	Syphon	1
19	Paper Dispenser	1
20	S.S. Soap Dispenser	1
21	Plastic Garbage Bin	1
22	Support Tools	1

# INSTALLATION

## MOUNTING

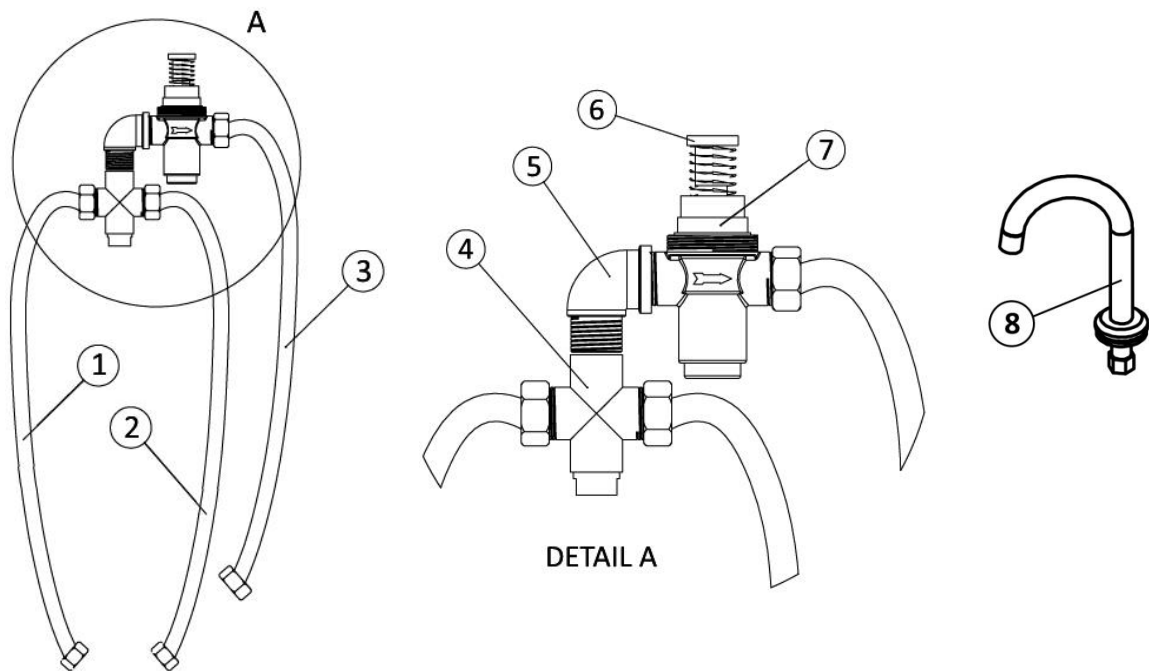
1. The tap is placed in the hole at the right side. (Part 15)
2. The soap dispenser is placed in the hole on backsplash. (Part 5 and 20)
3. The paper dispenser is placed in the hole on backsplash. (Part 5 and 19)
4. The backsplash parts are inserted to the channels at the back of the main body. (Part 13)
5. The handle is fixed to the channels by the bolts and the nuts in the fittings bag.

## PLUMBING INSTALLATION

Make sure that the plumbing installation as shown in the following tables and pictures. Only water and tap connections must be made by the customer. Other installation connections have been made by the manufacturer.

Balanced water pressure supplies required. (Pressure range: 1.5-3 Bar)

### 1. DOUBLE WATER INLET



Part No.	Part Description
1	Cold water inlet (3/8" Flexible hose)
2	Hot water inlet (3/8" Flexible hose)
3	Water outlet (1/2" Flexible hose)
4	Mixer valve
5	90° Elbow (1/2")
6	Button (Trigger mechanism)
7	Valve (Timed)
8	Swivel Faucet

## CLEANING AND MAINTENANCE

- The handwash basin parts must be cleaned whenever necessary, with soapy water and a sponge or a soft cloth only.
- For descaling, we recommend the use of liquid descaling products.
- Do not use abrasive or corrosive products (solvents, scouring powder, acid detergents, chlorinate)
- Maintenance operations are limited to the replacement of damaged or worn out parts, particularly when leaks are noticed. In this case you are recommended to call a qualified professional and to use only original spare parts.

**Warranty:** This product is under the Manufacturer Company's 1-year warranty provided that it is used in accordance with the instructions for use!