

Sink installation Manual

STK167BL2



1. Sink carton



under shelf
1pcs

Sink top 1pcs

Back up
panel 1pcs

Back down
panel 1pcs

Front panel

1pcs

Left side panel

1pcs

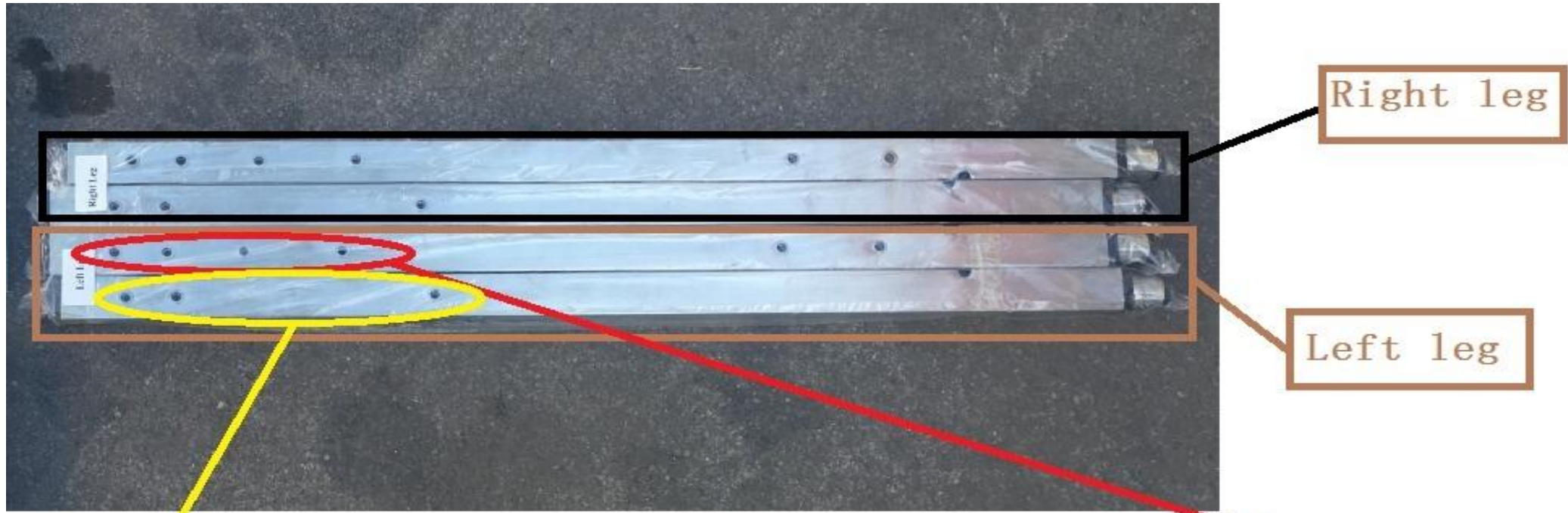
Sink Leg

4pcs

Right sidepanel

1pcs

Spare parts
list



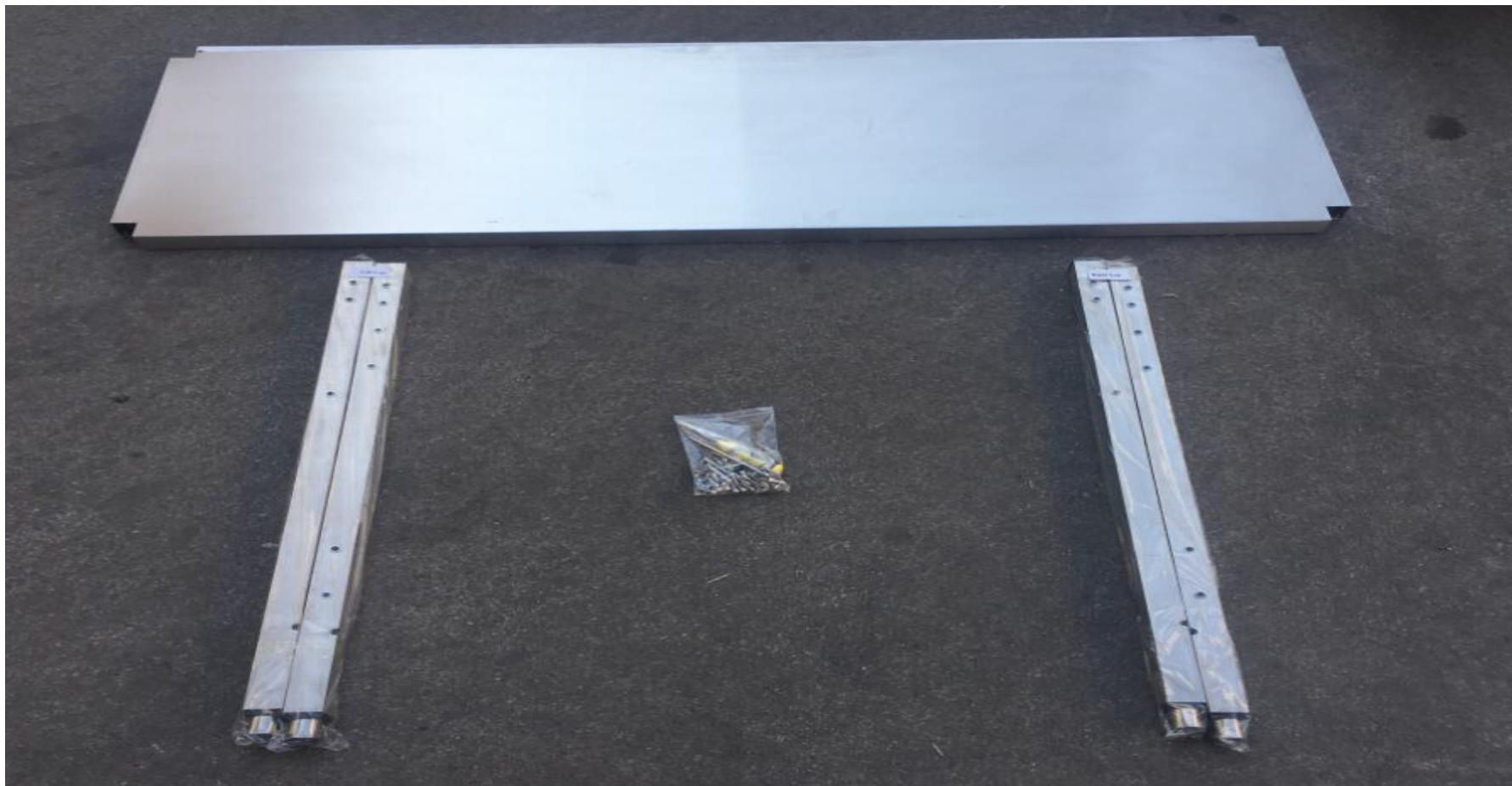
Right leg

Left leg

There are 2 holes at the top of the pool legs, the front legs of the pool.

There are four holes at the top of the pool legs, which are the hind legs of the pool.

Sink legs 4pcs



Step one :Under shelf and legs



Stop one

Tools Needed:

(1)Screw M8*40

(2)Small wrench

(3)Washer



Step One :
Please assemble the
legs and lower as per
the picture left.



Step one : 4 legs should be installed with under shelf.



Step one :Please put the product in this way.



Step 02 :Please install the left and right panel on the legs.

Step 02 :After install the left and right panel, then install the front and back panel.Please use a small wrench to tighten 10 screws of M6.





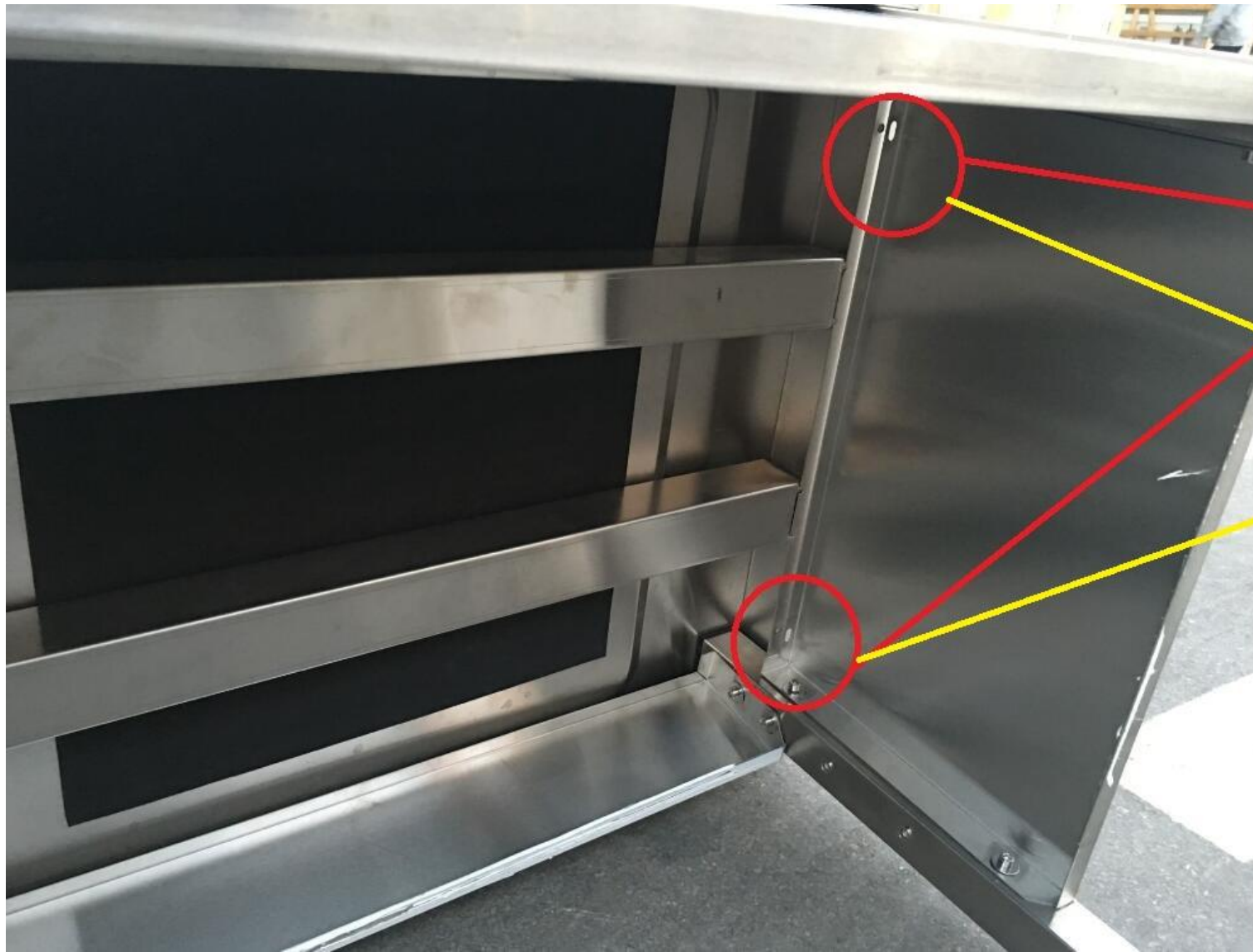
Stop 02: Install all the panel .(one left panel,one right panel,one front panel and two back panel)Please use a small wrench to tighten 10 screws of M6.

Step 03 :Install sink top





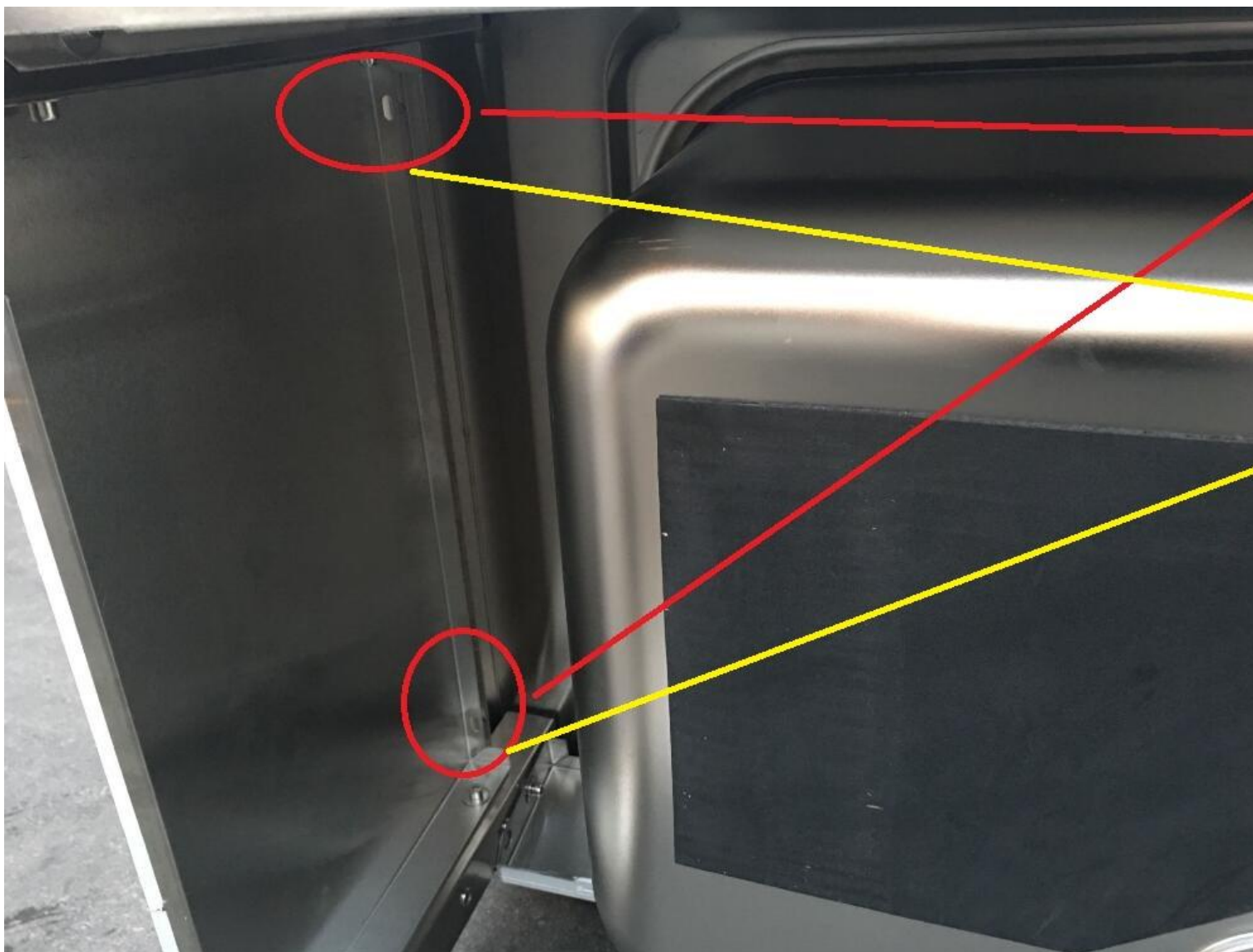
Step 03 :
Please reverse
the product.



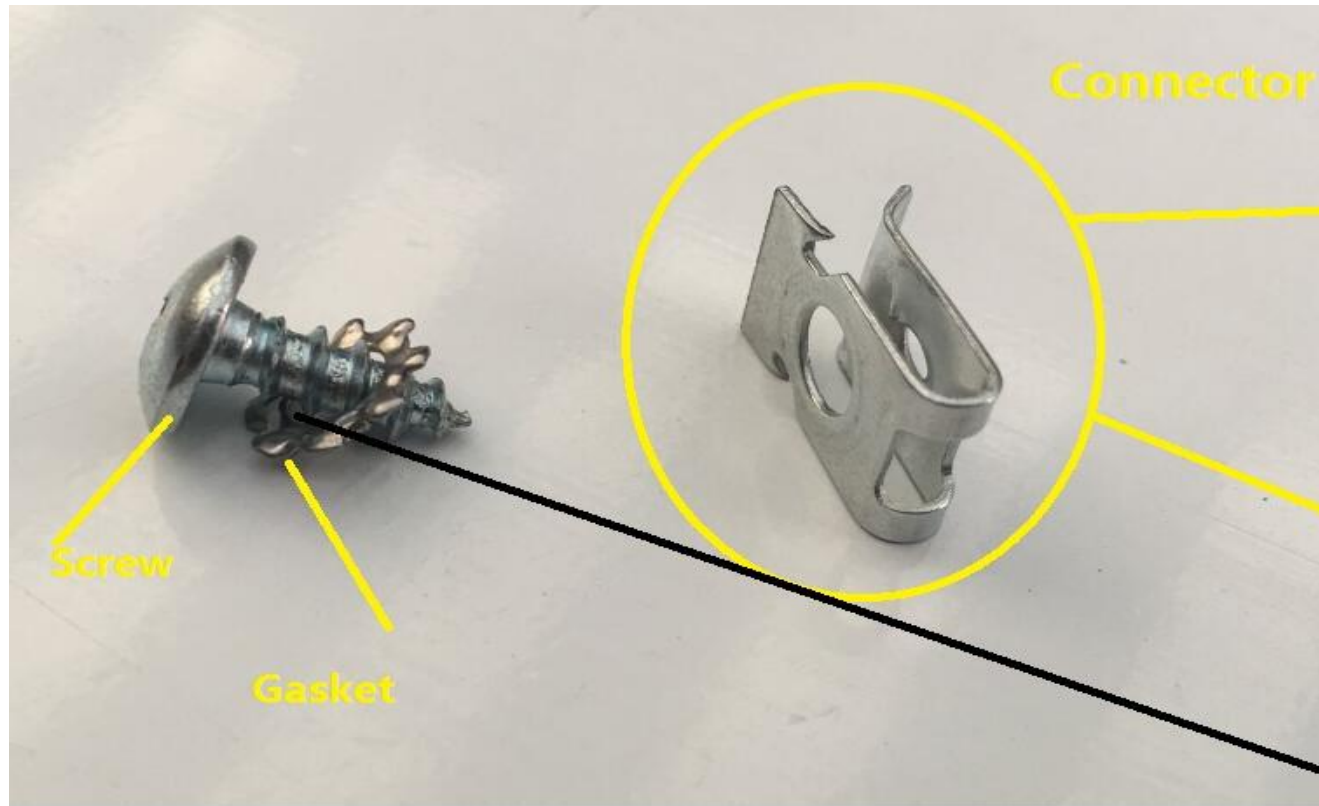
**Make the sink top
and left Panel
connect together,**

Hole 1

Hole 2



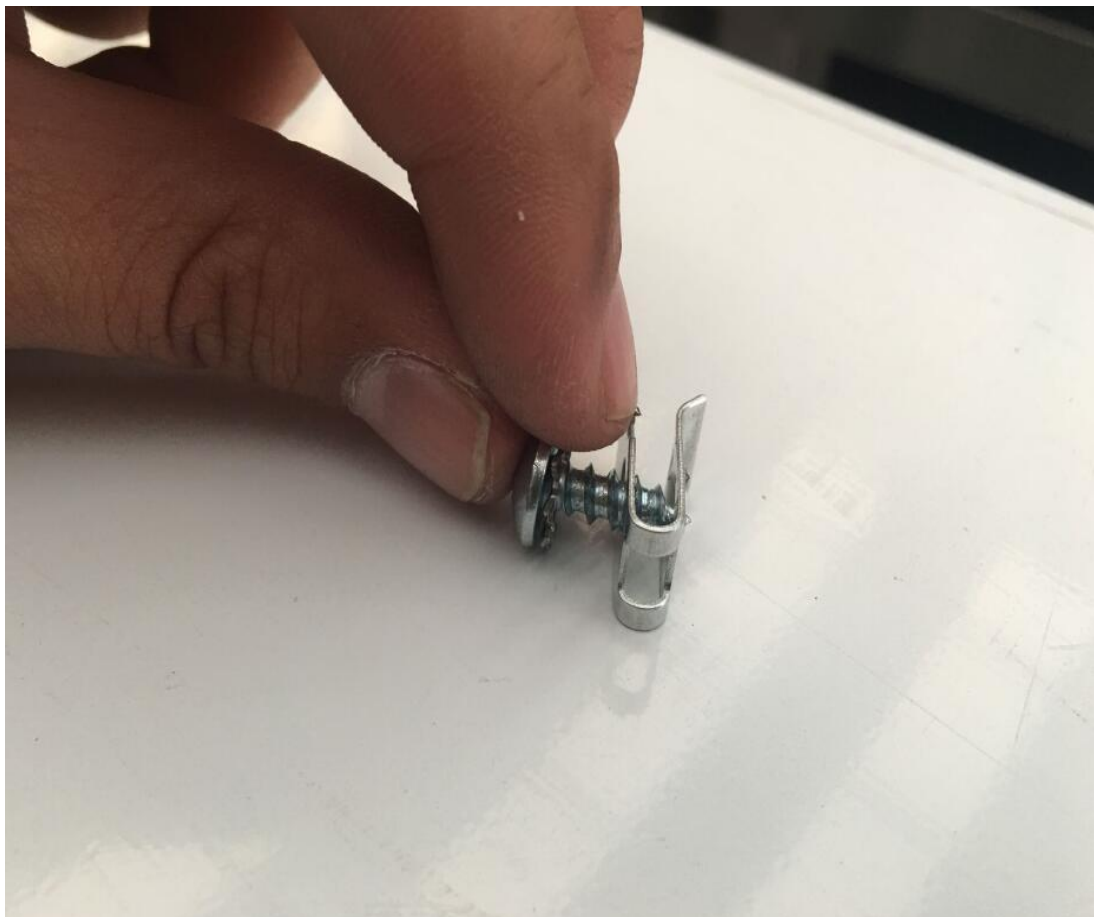
**Make the sink top
together with the left
panel,
Hole 3 and Hole 4**



Connector

This is the connector part for the sink top and left & Right Panel.

When the connector fix the sink top and panel, then use the srcew to assemble the sink top and the left & Right panel.





Sink top

Left panel

Put the connector to hold
the left panel and sink
top.

**Make the screws and gasket
ready .**





Use the screw driver to fix the screw and the gasket for sink top and left panel, make it very tight.



The hole for left panel and sink top is ready, continue to fix four holes, Hole 1 , hole 2, hole 3 and hole 4 .

Step 04 : Please install drain pipe as pictures below.



Step 05 :The sink installation is finished.

