





# Geschirrspülmaschine

## A1 PRODUKTBEZEICHNUNG

---

\* Das Gerät ist für den Einsatz in Großküchen konzipiert.

Art.-Nr.	Maße (mm)	Gewicht (kg)	Verpackungsmaße (mm)
GE500M	590x700x820	67	725x650x970

## A2 TECHNISCHE DATEN

---

Art.-Nr.	GE500M
Kapazität	500
Wasserverbrauch (Lt/Stück.)	2,5
Leistung (KW)	3,6
Motorleistung (KW)	0,55
Spannung (V)	220
Wasserdruck ( bar )	4
Leistung des Waschbehälters (KW)	2,5
Leistung des Spülbehälters (KW)	3
Kabel (mm <sup>2</sup> )	3x2,5
Sicherung (A)	25
Max. Tellerdurchmesser (Ø)	320
Programme (°C)	90 - 120 - 180







# Geschirrspülmaschine

**E 5(,1,\*81\*81\$781\***

---



- Always turn off the appliance and disconnect from the power supply before cleaning.
- Evacuate the water by taking off the stopple and switching to evacuation position after every use.
- Clean all surfaces of the appliance with hot soapy water after every use. Rinse and dry with a wet cloth.
- Clean the control panel with soft moist cloth, if necessary use ineffective detergent.
- Do not use abrasive cleaning chemicals as these can leave harmful residues.
- Do not clean the appliance by spraying water directly, otherwise electric motor may get damaged.



- Maintenance should be done by qualified person.
- Clean the limes of the burner, inner surface of the washing tank and water pipes once or twice in a year.
- Clean the limes with using rinsing and washing nozzles once in a month by using vinegar or lime remover.
- Clean the filters in the appliance once in a week. After cleaning be sure that thumbscrew is compressed.
- Clean the appliance's fountains once in 15 days by detaching it.
- Clean the appliance's evacuation stopple and evacuation hoses once in 15 days.

## F TROUBLESHOOTING

<b>THE APPLIANCE DOESN'T WASH WELL</b>	<ol style="list-style-type: none"> <li>1. Clean the absorbing filter if it is dirty.</li> <li>2. Check the washing nozzles if they are accumulated with residues or not.</li> <li>3. Check the amount of detergent.</li> <li>4. If chosen washing program is too less,repeat the program.</li> <li>5. Check if the plates are placed to the baskets correctly.</li> </ol>
<b>CUPS AND PLATES ARE NOT DRIED WELL</b>	<ol style="list-style-type: none"> <li>1. If there is polisher or not,if not add some.</li> <li>2. Check the amount of polisher.</li> </ol>
<b>MIST OVER ON CUPS</b>	<ol style="list-style-type: none"> <li>1. After washing process ,take off the cups from baskets.</li> </ol>
<b>CORROSION ON CUPS</b>	<ol style="list-style-type: none"> <li>1. Only use products that are not foaming for the professional dishwashers.</li> </ol>
<b>MUCH FOAM AT STORAGE</b>	<ol style="list-style-type: none"> <li>1. Check the amount of detergent .</li> <li>2. If foaming detergent is used,pour it and rinse the storage till the foams are lost.</li> </ol>
<b>WASHING OR RINSING HANDLES ARE TURNING SLOWLY</b>	<ol style="list-style-type: none"> <li>1. Take off washing handles and clean them.</li> <li>2. Clean the washing pump absorbing filter.</li> </ol>
<b>VISCIDITY AND SPOTS ON CUPS</b>	<ol style="list-style-type: none"> <li>1. Reduce the amount of polisher.</li> </ol>

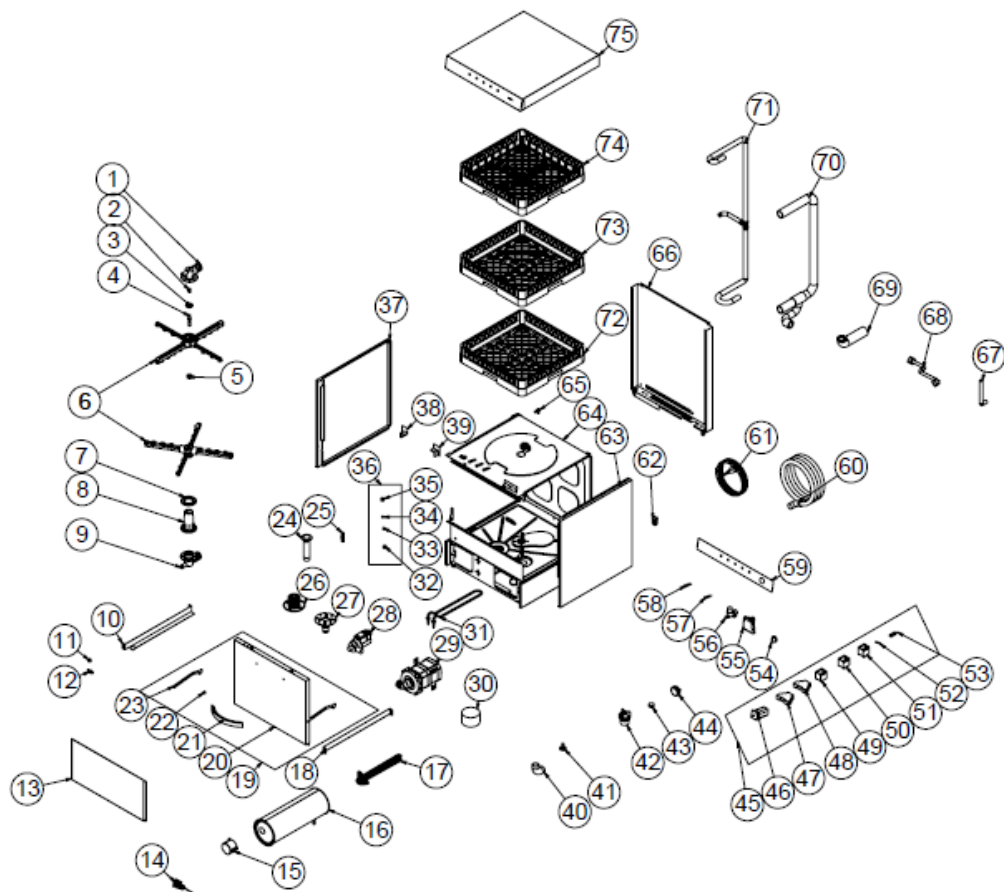
- If dishwashing is not done at suitable quality
- If any function of security doesn't work
  - Do not use the appliance.

**\*If these problems are still going on,contact with our authorized services.**



# Geschirrspülmaschine

## G SPARE PART LIST-EXPLODING DRAWING



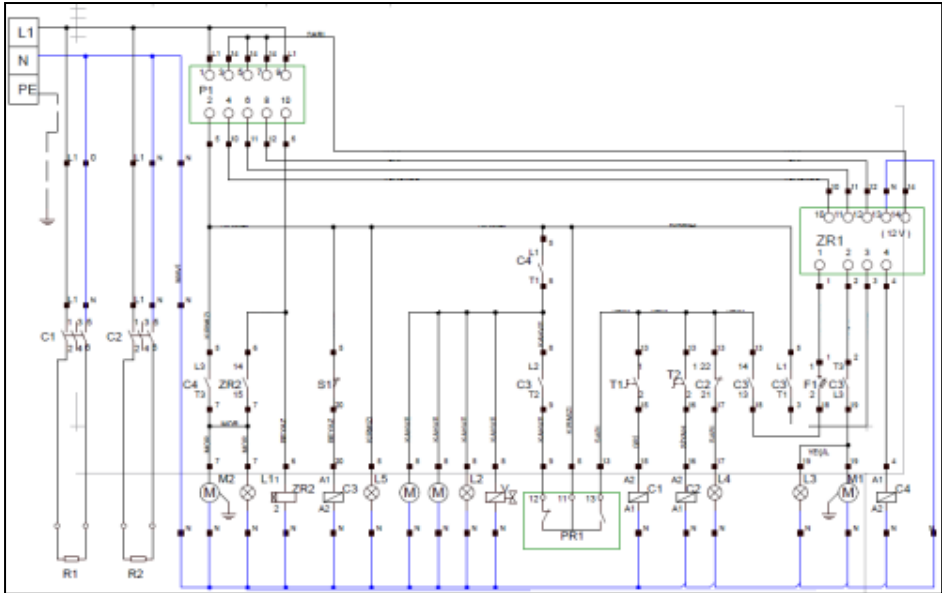
## G SPARE PART LIST-EXPLODING DRAWING

PRODUCT CODE : EMP.500		
NO	PRODUCT NAME	P. CODE
1	HOSE INLET UPPER ELBOW (BUSHING)	M.ENJ-ERS-PLS-BYM-097
2	FOUNTAIN BELLY SIGN	YTL-ERS.BYM-KS-0014
3	PRESSURE PLASTIC	M.ENJ-ERS-PLS-BYM-059
4	FOUNTAIN CORE SHAFT	YTL-ERS.BYM-KS-0001
5	FOUNTAIN CORE SCREW	M.ENJ-ERS-PLS-BYM-070
6	FOUNTAIN	M.ENJ-ERS-PLS-BYM-053
7	BOTTOM TOP FOUNTAIN CORE GASKET (WITH ORING)	M.ENJ-ERS-LST-019
8	LOWER FOUNTAIN CORE	M.ENJ-ERS-PLS-BYM-020
9	HOSE INLET LOWER ELBOW (WITHOUT BUSHING)	M.ENJ-ERS-PLS-BYM-096
10	RIGHT SLIP SHEET	YSC-ERS.BYM-LZ-0005
11	DIAMETER 15*5 - MAGNET	M.MIK-ERS-001
12	MICNATIS BED 15X5	M.ENJ-ERS-PLS-BYM-001
13	BOTTOM COVER SHEET	YSC-ERS.BYM-LZ-0452
14	TERMOSTAT-0-90C (EGO-5517012040)	M.ELK-MEK-TRM1-008
15	RESISTOR COVER	M.ENJ-ERS-PLS-BYM-025
16	BOILER TANK	M.MEK-TES-BYM-BYL-001
17	F2120-1P 121348 UPI-BOILER RESISTANCE 220V-5000W	M.ELK-RZS-BRU-BYM-030
18	LEFT SLEEVE SHEET	YSC-ERS.BYM-LZ-0004
19	COVER ASSEMBLY (SPARE PARTS)	ARA-ERS.BYM-0012
20	COVER EXTERIOR SHEET	YSC-ERS.BYM-PN-0344
21	LID HANDLE (21 CM)	M.AKS-KLP-INX-003
22	COVER HANDLE TURNING PART	YTL-ERS.BYM-KS-0119
23	TOP COVER HANDLE	YSC-ERS.BYM-LZ-0455
24	SHORT WATER DRAIN WEDGE	M.ENJ-ERS-PLS-BYM-016
25	COVER ARM WEDGE PLASTIC	M.ENJ-ERS-PLS-BYM-017
26	FILTER COVER	M.ENJ-ERS-PLS-BYM-086
27	WATER DRAIN WEDGE BEARING	M.ENJ-ERS-PLS-BYM-112
28	DRAIN PUMP CL2100	M.ELK-MTR-PMP-002
29	DISHWASHING MOTOR	M.ELK-MTR-PMP-001
30	STRAINER	M.ENJ-ERS-PLS-BYM-041
31	120541 UPI-TANK RESISTANCE 230V-2500W	M.ELK-RZS-BRU-BYM-028
32	SPRING SEAT SET	YTL-ERS.BYM-KS-0073
33	COVER SPRING	M.YAY-ERS-035
34	9,525 MM 316K STAINLESS STEEL GRAIN BALL (INOX)	M.MUH-021
35	BODY SET	YTL-ERS.BYM-KS-0072
36	ASSEMBLY (SPARE PARTS)	ARA-ERS.BYM-0013

# Geschirrspülmaschine

37	RIGHT SIDE SHEET	YSC-ERS.BYM-PN-0347
38	CORNER PLASTIC RIGHT	M.ENJ-ERS-PLS-BYM-061
39	CORNER PLASTIC LEFT	M.ENJ-ERS-PLS-BYM-062
40	WASHING PUMP HOSE	M.MEK-TES-HRT-014
41	FOOT TACROSIS	M.AKS-AYK-INX-004
42	ROUND STRAINER BED	M.ENJ-ERS-PLS-BYM-018
43	STRAINER NUT	M.ENJ-ERS-PLS-BYM-113
44	PROSESTAT SHAMANDIRA	M.ELK-MUH-001
45	READY ELECTRICAL PANEL GROUP	M.ELK-PNO-BYM-001
46	SWITCH	M.ELK-SLT-PKO-011
47	Z3-360S TIME ROLLER	M.ELK-KNT-ROL-007
48	DWT-3E TIME ROLLER	M.ELK-KNT-ROL-020
49	SCHNEIDER LC1K0901M7 MINI CONTACTOR	M.ELK-KNT-KNT-020
50	SCHNEIDER LC1K0910M7 MINI CONTACTOR	M.ELK-KNT-KNT-021
51	SCHNEIDER LC1K1210M7 MINI CONTACTOR	M.ELK-KNT-KNT-022
52	GLASS INSURANCE 5A	M.ELK-SGR-011
53	MAGNETIC SENSOR-HORIZONTAL	M.ELK-SWC-KTG-001
54	CHARTEL BUTTON	M.AKS-DGM-MUH-001
55	AIR TRAP	M.ENJ-ERS-PLS-BYM-019
56	VENTILATION-SINGLE INLET (14 LT)	M.ELK-SLN-PLS-001
57	WARNING LIGHT WITH PLUG-IN SOCKET - GREEN	M.ELK-LMB-SNY-001
58	WARNING LIGHT WITH PLUG-IN SOCKET - YELLOW	M.ELK-LMB-SNY-003
59	PANEL LABEL	M.AKS-ETK-LKS-ERS-BYM-014
60	244 CM ELBOW-FREE WASTE WATER HOSE	M.MEK-TES-HRT-033
61	3*2.50 MM TTR CABLE GRAY-BLACK	HEL-KB-TT-3*2,5-SYH
62	PG-16 GRAY CABLE GLAND WITH NUT (CENTER)	M.ELK-RKR-PLS-004
63	LEFT SIDE SHEET	YSC-ERS.BYM-PN-0346
64	CHASSIS	-
65	DETERGENT INLET PLASTIC	M.PLS-ERS-036
66	BACK COVER SHEET	YSC-ERS.BYM-PN-0010
67	VENTIL BOILER HOSE	M.MEK-TES-HRT-006
68	MAINS HOSE (150 CM)	M.MEK-TES-HRT-011
69	BOILER PUMP HOSE	M.MEK-TES-HRT-002
70	WASHING WATER INLET HOSE	M.MEK-TES-HRT-001
71	SPRINKLER DISTRIBUTION HOSE	M.MEK-TES-HRT-003
72	PLATE BASKET	EMP.TB.01
73	SPOON AND FORK BASKET	EMP.KC.01
74	GLASS BASKET	EMP.BB.01
75	TOP COVER SHEET	YSC-ERS.BYM-LZ-0448

## H ELECTRIC CIRCUIT SCHEMA



# Geschirrspülmaschine

<b>P1</b>	5 PROGRESSIVE COMMUTATOR
<b>S1</b>	MAGNETIC DOOR SENSOR
<b>C1</b>	BOILER CONTACTOR 220V
<b>C2</b>	WASHING CONTACTOR 220V
<b>C3</b>	LID CONTACTOR 220V
<b>C4</b>	RINSING CONTACTOR 220V
<b>L1</b>	EVACUATION LAMP
<b>L2</b>	RINSING LAMP
<b>L3</b>	WASHING LAMP
<b>L4</b>	WATER IS HEATED LAMP
<b>L5</b>	START LAMP
<b>T1</b>	BOILER THERMOSTAT (30-90°C)
<b>T2</b>	WASHING THERMOSTAT (30-90°C)
<b>ZR1</b>	5 CYCLE- CYCLE RELAY (INTER RR-5TG)
<b>ZR2</b>	0-240 SEC. CYCLE RELAY
<b>PR1</b>	PROSSESTAT
<b>M</b>	DETERGENT PUMPS
<b>M1</b>	WASHING MOTOR 0,55 KW 230V
<b>M2</b>	EVACUATION MOTOR 0,44 W 230V
<b>R1</b>	BOILER RESISTANCE 3000W
<b>R2</b>	WASHING RESISTANCE 2500W
<b>F1</b>	LEAKAGE CURRENT SAFETY FUSE
<b>F2</b>	ZR1 FUSE 500MA
<b>V</b>	SOLENOID VALVE 220V
<b>TR1</b>	WASHING MOTOR SAFETY RELAY
<b>TR2</b>	EVACUATION HOSE SAFETY THERMIC