

UNDERCOUNTER TYPE DISHWASHER

CONTENTS

A	GENERAL INFORMATION	Page 2
A1	PRODUCT DESCRIPTION	Page 3
A2	TECHNICAL INFORMATION	Page 3
A3	TRANSPORTATION	Page 4
A4	UNPACKING	Page 4
B	INSTALLATION	Page 4
C	SAFETY INSTRUCTIONS	Page 5
D	OPERATION	Page 7
E	CLEANING & MAINTENANCE.....	Page 10
F	TROUBLESHOOTING	Page 11
G	SPARE PART LIST- EXPLODING DRAWING	Page 12
H	ELECTRIC CIRCUIT SCHEMA	Page 24

UNDERCOUNTER TYPE DISHWASHER

A GENERAL INFORMATION

Before installing the appliance, read operation and maintenance instructions carefully. Wrong installation and part changing may damage the product or may cause injury on people. These are not in our company's responsibility to damage the appliance intentionally, negligence, detriments because of disobeying instructions and regulations, wrong connections. Unauthorized intervention to appliance invalidates the warranty.

1. This instruction manual should be kept in a safe place for future reference.
2. **Installation should be made in accordance with ordinances and security rules of that country by a qualified service personnel.**
3. This appliance has to be used by trained person.
4. Please turn off the appliance immediately in the event of malfunction or failure. The appliance should be repaired only by authorized service personnel. Please demand original spare part.

UNDERCOUNTER TYPE DISHWASHER

A1 PRODUCT DESCRIPTION

*The Professional Undercounter Type Dishwasher ,that provides high efficiency has been designed to be used in industrial kitchens.

Product Code	Dimensions (mm)	Weight (kg)	Packaging Dimensions (mm)
GE500D	590x660x830	64	735x650x970
500-380-SD	590x660x830	64	735x650x970
GE500ND	590x660x830	64	735x650x970
500-380-SDF	590x660x830	64	735x650x970

A2 TECHNICAL INFORMATION

Product Code	GE500D	500-380-SD	GE500ND	500-380-SDF
Capacity (Plate/ hour)	500	500	500	500
Water Consumption (Lt/Piece.)	2.5	2.5	2.5	2.5
Total Power (KW)	6	6	3,55	6
Motor Power (KW)	0,55	0,55	0,55	0,55
Operating Voltage (V)	220-230	380-400	220-230	380-400
Water Pressure (bar)	2-4	2-4	2-4	2-4
Washing Tank Power (KW)	2,5	2,5	2,5	2,5
Rinsing Tank Power (KW)	5	5	3	5
Cable (mm ²)	3x2,5	5x4	3x2,5	5x4
Fuse (A)	32	25	25	25
Max.Plate Diameter (Ø mm)	Ø320	Ø320	Ø320	Ø320
Program Number (°C)	4	4	4	4

UNDERCOUNTER TYPE DISHWASHER

A3 TRANSPORTATION

*This appliance can not be moved by hand from area to area. It must be moved on pallet with forklift truck.

A4 UNPACKING

*Please unpack the package according to the security codes and ordinances of current country and get rid from the pack. Parts which contacts with food are produced by stainless steel. All plastic parts are marked by material's symbol.

*Please check that all the parts of appliance had come completely and if they are damaged or not during the shippin.

B INSTALLATION

*Please place the product to straight and sturdy ground, please take necessary steps against possibility of overturn.

*Technician who will serve for installation and service for the appliance must be professional on this subject and must have installation and service licenses by the company.

*Connection to Electric Power Supply must be done by authorized person.

*Please be sure that the voltage connected to appliance must be equal with the voltage which is on appliance's label.












This appliance must be connected to an earthed outlet in accordance with safety rules and standards.

*Appliance's earthing must be connected to earthing line on panel which is nearest to electric installation.

*Connection to the main fuse and leak current fuse must be done in accordance with the current regulations.

UNDERCOUNTER TYPE DISHWASHER

C SAFETY INSTRUCTIONS

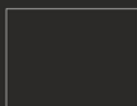
-  *Do not use the appliance in insufficient lighted place.
-  *Do not touch the moving attachments while the appliance operates.
-  *Do not install the appliance in the presence of flammable or explosive materials.
-  *Do not operate the appliance when the machine is empty.
-  *Do not load so less or more than appliance's capacity.
-  *Do not attempt to use the appliance without suitable protective equipments.
-  *Because of any reason if there is a fire or flame flare where the appliance is used, turn off all gas valves and electric contactor switch quickly and use fire extinguisher. Never use water to extinguish the fire.
-  *All the damages because of not having earthing connection will not be on warranty.
-  *Do not wash the decorated dishes. Prevent silver wares to contact with the other metals.

UNDERCOUNTER TYPE DISHWASHER

- Before starting to use the device, it is essential to read the operating instructions and follow the instructions and warnings while you are using the device. Otherwise the responsibility for accidents and damages that may occur belongs to the buyer.
- Installation and connection of the device must be done by experienced technicians according to the diagram. Otherwise the responsibility belongs to the buyer.
- The ambient temperature of the device must be between 0 and 50 °C.
- Before giving the energy to the device, the supply voltage must be checked for suitability.
- Necessary precautions should be taken to prevent the liquid flow into the device and entering of metal parts. Otherwise accidents such as fire and electric shock may occur.
- In case of any malfunction, do not remove the cover of the appliance. If the fault persists, notify the service in writing with the description.
- In case of deterioration of the device when attached to the machine, the necessary electrical and mechanical precaution must be taken to prevent accidents and damage.
- Never remove the warranty label. Otherwise, your device will be out of warranty. Repair of the device must be done by authorized service.
- Cables that transmit the sensor and input signals to the device should be transported as far away as possible and prevented being affected from inductive load cables operating in the supply, control, switched mode .
- Shielded cables must be selected for cables carrying sensor and input signals to the device and the shield of the cable must be connected to the ground.
- If multiple electronic devices are used, a separate supply line must be drawn for each device. Where electrical noise is high, isolation transformer and line filter should be used on the supply line.
- The control circuit must not be connected to the device supply line.
- Clean the front panel of the device with a soft, damp cloth. Do not use thinner etc.
- Avoid using high-torque screwdrivers during installation of the device.

UNDERCOUNTER TYPE DISHWASHER

D OPERATION



ON/OFF: While the device is energized, the on / off button is pressed and the device is switched on or off.



START-STOP: The washing process starts or stops by touching the start / stop button while the device is switched on. If the start-stop button is held down for a long time, you can switch between automatic and manual position.









KEYLOCK: The key lock is activated or disabled by holding down the button. When the key lock is activated, the button lighting comes on and all keys are locked against operation. Key lock is active when the device is first energized.



PROGRAM: Allows switching between programs. Washing programs, evacuation process or machine internal washing process are selected by touching the program key

UNDERCOUNTER TYPE DISHWASHER











	Automatic washing mode enabled
	Cover open
	Cover closed
	The machine is in standby
	Washing is in progress
	Rinsing is in progress.

TOUCHSCREEN WARNINGS

- When the machine is energized, you should not be touched any buttons until the On / Off button lights up.
- The types of touches are given below.



UNDERCOUNTER TYPE DISHWASHER

	The washing process is over.
	60 sec. wash program selected
	90 sec. wash program selected
	120 sec. wash program selected
	Evacuation program selected
	Machine internal washing program
	The water level is missing. During this process, does water intake automatically.
	
	Automatic washing mode is enabled. When the cover is closed, the machine starts the washing process.
	Washing process completion indicator.

UNDERCOUNTER TYPE DISHWASHER

E CLEANING & MAINTENANCE

➤ **CLEANING AND MAINTENANCE AFTER EVERY USE**

- Always turn off the appliance and disconnect from the power supply before cleaning.
- Evacuate the water by taking off the stopple and switching to evacuation position after every use.
- Clean all surfaces of the appliance with hot soapy water after every use. Rinse and dry with a wet cloth.
- Clean the control panel with soft moist cloth, if necessary use ineffective detergent.
- Do not use abrasive cleaning chemicals as these can leave harmful residues.
- Do not clean the appliance by spraying water directly, otherwise electric motor may get damaged.

➤ **PERIODIC CLEANING AND MAINTENANCE**

- Maintenance should be done by qualified person.
- For the efficiency of the product, it is significant to keep the service supported annual maintenance of the boiler.
- According to the scale ratio of your location, it is advised to keep the weekly/monthly maintenance to clean the washing tank and interior surfaces, water hoses, trunks and sprinklers.
- Please clean the washing nozzles weekly by disassembling.
- Please clean the drainage pump and the engine sorption filter weekly.
- Utilisation of anti-scale during the cleaning of the apparatus.
 - After the entrance of the clean water into the machine, please wait for the heating time.
 - Pour 100 milliliters of anti-scale in the boiler.
 - Run the empty machine for 3-4 times.
 - Drain the water.

- **Do not leave the anti-scale substance within the boiler for a long period of time. Otherwise, it might damage the internal parts.**

UNDERCOUNTER TYPE DISHWASHER

F TROUBLESHOOTING

THE APPLIANCE DOESN'T WASH WELL	<ol style="list-style-type: none">1. Clean the absorbing filter if it is dirty.2. Check the washing nozzles if they are accumulated with residues or not.3. Check the amount of detergent.4. If chosen washing program is too less,repeat the program.5. Check if the plates are placed to the baskets correctly.
--	---

CUPS AND PLATES ARE NOT DRIED WELL	<ol style="list-style-type: none">1. If there is polisher or not,if not add some.2. Check the amount of polisher.
---	--

MIST OVER ON CUPS	<ol style="list-style-type: none">1. After washing process ,take off the cups from baskets.
--------------------------	---

CORROSION ON CUPS	<ol style="list-style-type: none">1. Only use products that are not foaming for the professional dishwashers.
--------------------------	---

MUCH FOAM AT STORAGE	<ol style="list-style-type: none">1. Check the amount of detergent .2. If foaming detergent is used,pour it and rinse the storage till the foams are lost.3. Do not wash with cold water, wait for the warmed lamp
-----------------------------	--

WASHING OR RINSING HANDLES ARE TURNING SLOWLY	<ol style="list-style-type: none">1. Take off washing handles and clean them.2. Clean the washing pump absorbing filter.3. Check the rinse water pressure
--	---

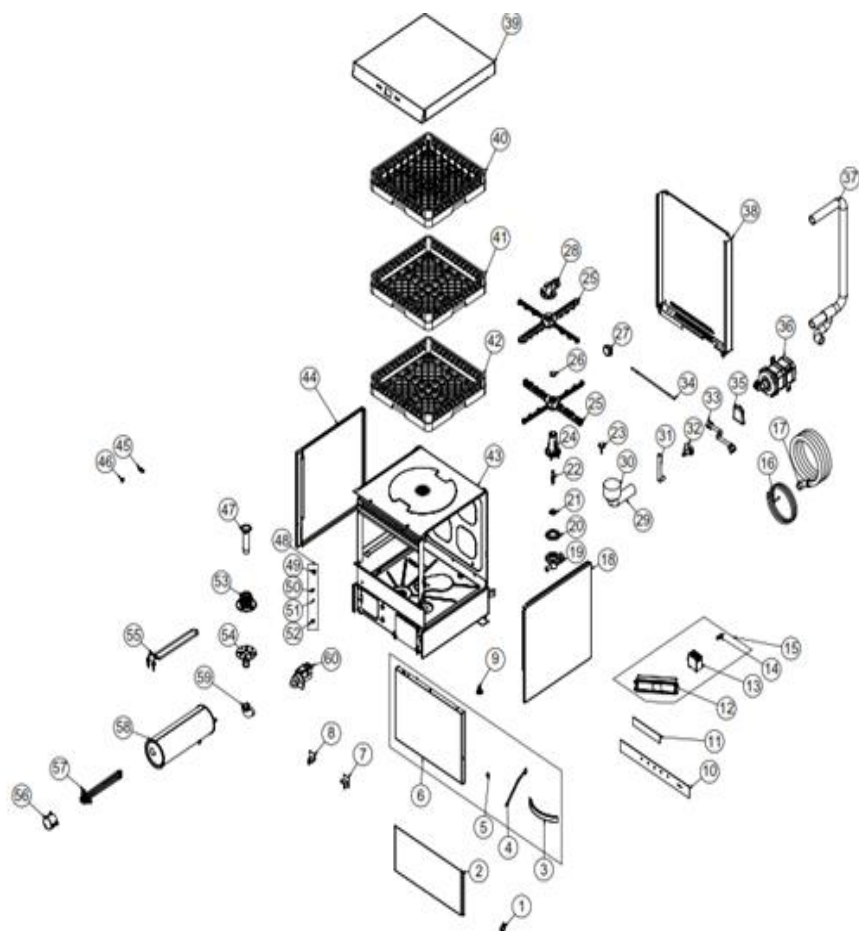
VISCIDITY AND SPOTS ON CUPS	<ol style="list-style-type: none">1. Reduce the amount of polisher.
------------------------------------	---

<ul style="list-style-type: none">• If dishwashing is not done at suitable quality• If any function of security doesn't work<ul style="list-style-type: none">➢ Do not use the appliance.
--

***If these problems are still going on,contact with our authorized services.**

UNDERCOUNTER TYPE DISHWASHER

G SPARE PART LIST-EXPLODING DRAWING



GE500D

UNDERCOUNTER TYPE DISHWASHER

G SPARE PART LIST-EXPLODING DRAWING

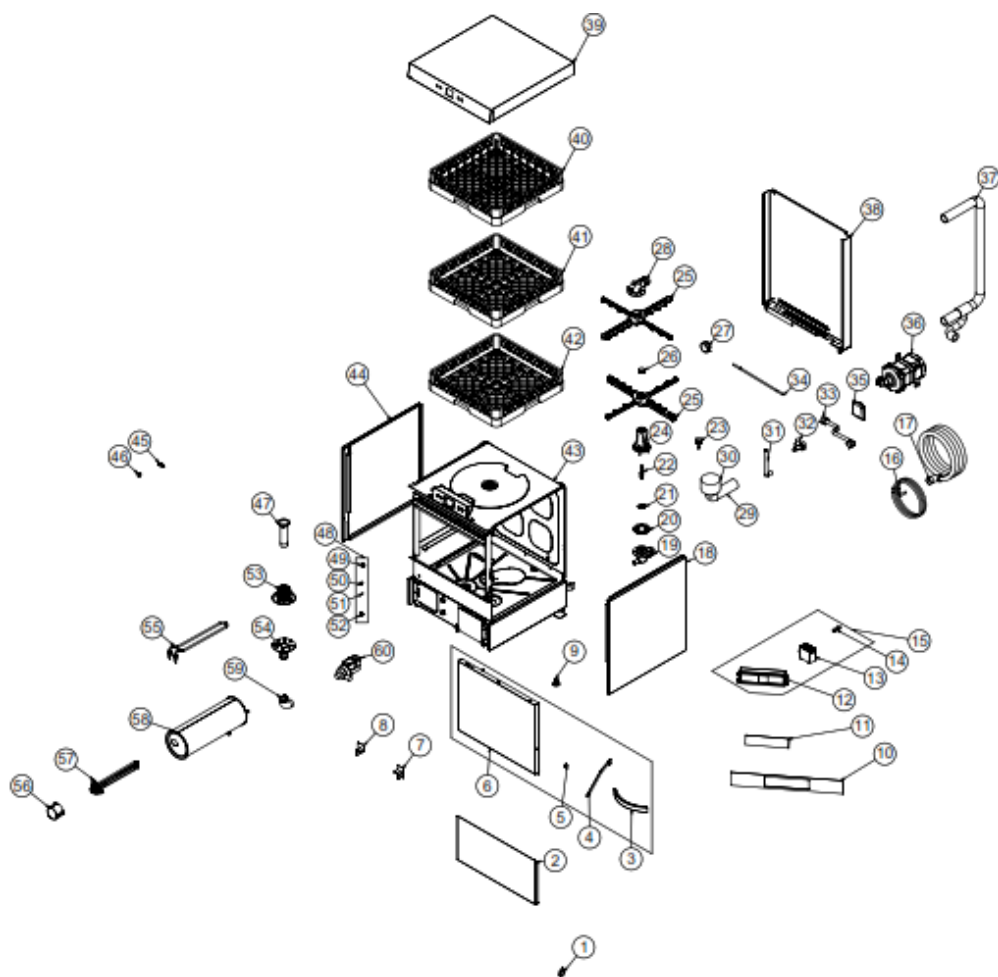
PRODUCT CODE :GE500D		
NO	PRODUCT NAME	P. CODE
1	INTERVENTION COVER	M.MEK-TES-KLP-006
2	BOTTOM COVER SHEET	YSC-ERS.BYM-LZ-0452
3	COVER HANDLE	M.AKS-KLP-INX-003
4	TOP COVER HANDLE	YSC-ERS.BYM-LZ-0455
5	SLEEVE PART	YTL-ERS.BYM-KS-0119
6	COVER OUTER SHEET	YSC-ERS.BYM-PN-0344
7	CORNER PLASTIC RIGHT	M.ENJ-ERS-PLS-BYM-061
8	CORNER PLASTIC LEFT	M.ENJ-ERS-PLS-BYM-062
9	FOOT	M.AKS-AYK-INX-004
10	PANEL LABEL	M.AKS-ETK-LKS-ERS-BYM-009
11	PANEL LABEL	M.AKS-ETK-LKS-ERS-BYM-013
12	DIGITAL CARD	M.ELK-EDM-DGT-048
13	LC1K1210M7 CONTACTOR	M.ELK-KNT-KNT-022
14	MAGNETIC SENSOR WITHOUT LED	M.ELK-SWC-KTG-004
15	DIGITAL ELECTRICAL PANEL GROUP	M.ELK-PNO-BYM-010
16	3*2.5 MM CABLE	HEL-KB-TT-3*2,5-SYH
17	WASTE WATER HOSE	M.MEK-TES-HRT-033
18	LEFT SIDE SHEET	YSC-ERS.BYM-PN-0346
19	HOSE LOWER ELBOW	M.ENJ-ERS-PLS-BYM-096
20	SPRAY GASKET	M.ENJ-ERS-LST-019
21	PRESSURE PLASTIC	M.ENJ-ERS-PLS-BYM-059
22	SPINNING SPINDLE	YTL-ERS.BYM-KS-0001
23	FILTER NUT	M.ENJ-ERS-PLS-BYM-113
24	LOWER FOUNTAIN CENTER	M.ENJ-ERS-PLS-BYM-020
25	FOUNTAIN	M.ENJ-ERS-PLS-BYM-053
26	SPRAY SCREW	M.ENJ-ERS-PLS-BYM-070
27	PROCESTAT FLOAT	M.ELK-MUH-001
28	HOSE UPPER ELBOW	M.ENJ-ERS-PLS-BYM-097
29	PUMP HOSE	ERS.M.MEK-TES-HRT-002
30	FILTER	M.ENJ-ERS-PLS-BYM-041

UNDERCOUNTER TYPE DISHWASHER

31	VALVE HOSE	ERS.M.MEK-TES-HRT-006
32	VALVE (14 LT)	M.ELK-SLN-PLS-001
33	HOSE 150CM	ERS.M.MEK-TES-HRT-011
34	PROCESTAT HOSE	HTS-HRT-008
35	AIR TRAP	M.ENJ-ERS-PLS-BYM-019
36	WASHING MOTOR	M.ELK-MTR-PMP-001
37	WATER INLET HOSE	M.MEK-TES-HRT-001
38	BACK COVER SHEET	YSC-ERS.BYM-PN-0010
39	TOP COVER SHEET	YSC-ERS.BYM-LZ-0289
40	GLASS BASKET	BB.01
41	SPOON FORK BASKET	KC.01
42	PLATE BASKET	TB.01
43	CHASSIS	-
44	RIGHT SIDE SHEET	YSC-ERS.BYM-PN-0347
45	MAGNET LOCATION	M.ENJ-ERS-PLS-BYM-001
46	MAGNET	M.MIK-ERS-001
47	DRAIN WEDGE	M.ENJ-ERS-PLS-BYM-016
48	COVER LOCK	ARA-ERS.BYM-0013
49	LOCK BODY	YTL-ERS.BYM-KS-0072
50	COVER LOCK SPRING	M.YAY-ERS-035
51	BALL	M.MUH-021
52	LOCK KIT SPRING PLACE	YTL-ERS.BYM-KS-0073
53	FILTER COVER	M.ENJ-ERS-PLS-BYM-086
54	DISCHARGE WEDGE LOCATION	M.ENJ-ERS-PLS-BYM-112
55	TANK RESISTANCE 230V-2500W	M.ELK-RZS-BRU-BYM-028
56	RESISTANCE COVER	M.ENJ-ERS-PLS-BYM-025
57	BOILER RESISTANCE 220V-5000W	M.ELK-RZS-BRU-BYM-030
58	BOILER TANK	M.MEK-TES-BYM-BYL-001
59	WASHING PUMP HOSE	ERS.M.MEK-TES-HRT-014
60	DRAIN PUMP	M.ELK-MTR-PMP-002

UNDERCOUNTER TYPE DISHWASHER

G SPARE PART LIST-EXPLODING DRAWING



500-380-SD

UNDERCOUNTER TYPE DISHWASHER

G SPARE PART LIST-EXPLODING DRAWING

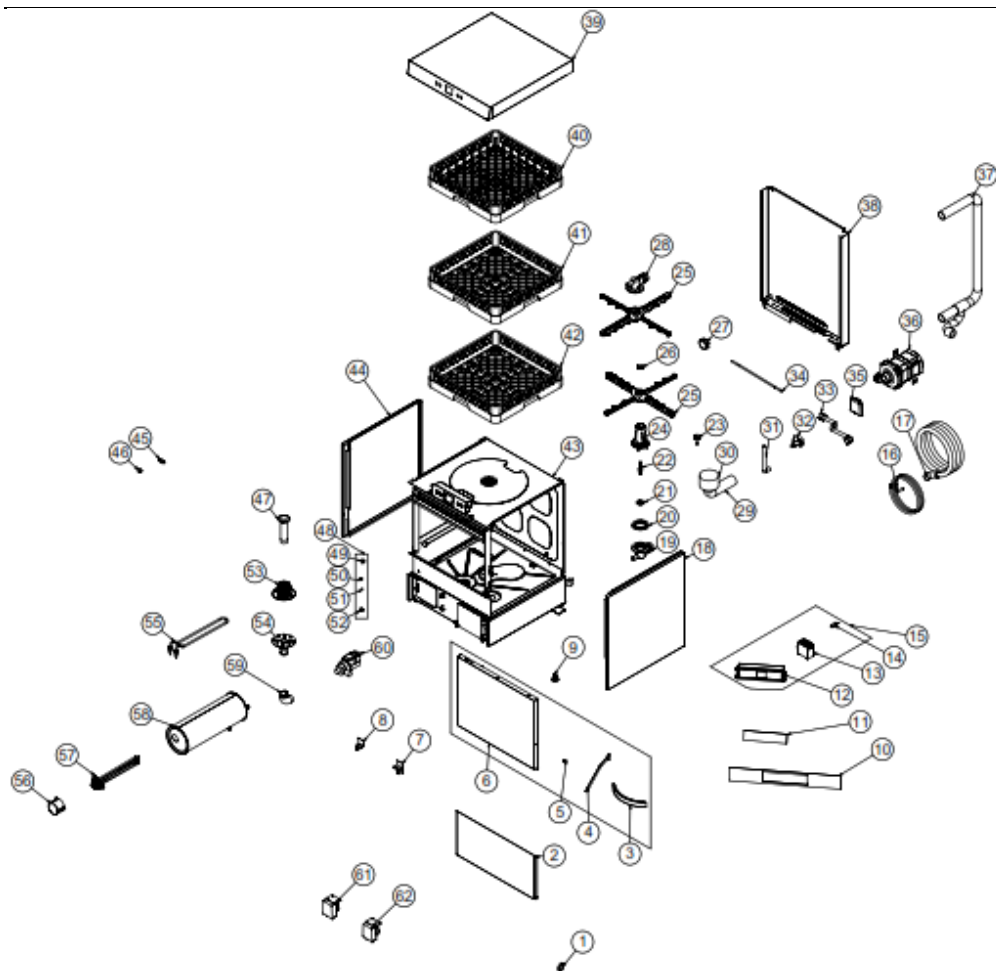
PRODUCT CODE :500-380-SD		
NO	PRODUCT NAME	P. CODE
1	INTERVENTION COVER	M.MEK-TES-KLP-006
2	BOTTOM COVER SHEET	YSC-ERS.BYM-LZ-0452
3	COVER HANDLE	ERS.M.AKS-KLP-INX-003
4	TOP COVER HANDLE	YSC-ERS.BYM-LZ-0455
5	SLEEVE PART	YTL-ERS.BYM-KS-0119
6	COVER OUTER SHEET	YSC-ERS.BYM-PN-0344
7	CORNER PLASTIC RIGHT	M.ENJ-ERS-PLS-BYM-061
8	CORNER PLASTIC LEFT	M.ENJ-ERS-PLS-BYM-062
9	FOOT	M.AKS-AYK-INX-004
10	PANEL LABEL	M.AKS-ETK-LKS-ERS-BYM-009
11	PANEL LABEL	M.AKS-ETK-LKS-ERS-BYM-013
12	DIGITAL CARD	M.ELK-PNO-BYM-013
13	LC1K1210M7 CONTACTOR	ERS.M.ELK-KNT-KNT-022
14	MAGNETIC SENSOR WITHOUT LED	M.ELK-SWC-KTG-004
15	DIGITAL PANEL GROUP 380V	M.ELK-PNO-BYM-018
16	3*2.5 MM CABLE	HEL-KB-TT-3*2,5-SYH
17	WASTE WATER HOSE	M.MEK-TES-HRT-033
18	LEFT SIDE SHEET	YSC-ERS.BYM-PN-0346
19	HOSE LOWER ELBOW	M.ENJ-ERS-PLS-BYM-096
20	SPRAY GASKET	M.ENJ-ERS-LST-019
21	PRESSURE PLASTIC	M.ENJ-ERS-PLS-BYM-059
22	SPINNING SPINDLE	YTL-ERS.BYM-KS-0001
23	FILTER NUT	M.ENJ-ERS-PLS-BYM-113
24	LOWER FOUNTAIN CENTER	M.ENJ-ERS-PLS-BYM-020
25	FOUNTAIN	M.ENJ-ERS-PLS-BYM-053
26	SPRAY SCREW	M.ENJ-ERS-PLS-BYM-070
27	PROCESTAT FLOAT	M.ELK-MUH-001
28	HOSE UPPER ELBOW	M.ENJ-ERS-PLS-BYM-097
29	PUMP HOSE	ERS.M.MEK-TES-HRT-002
30	FILTER	M.ENJ-ERS-PLS-BYM-041
31	VALVE HOSE	ERS.M.MEK-TES-HRT-006

UNDERCOUNTER TYPE DISHWASHER

32	VALVE (14 LT)	M.ELK-SLN-PLS-001
33	HOSE 150CM	ERS.M.MEK-TES-HRT-011
34	PROCESTAT HOSE	HTS-HRT-008
35	AIR TRAP	M.ENJ-ERS-PLS-BYM-019
36	WASHING MOTOR	M.ELK-MTR-PMP-001
37	WATER INLET HOSE	M.MEK-TES-HRT-001
38	BACK COVER SHEET	YSC-ERS.BYM-PN-0010
39	TOP COVER SHEET	YSC-ERS.BYM-LZ-0289
40	GLASS BASKET	BB.01
41	SPOON FORK BASKET	KC.01
42	PLATE BASKET	TB.01
43	CHASSIS	-
44	RIGHT SIDE SHEET	YSC-ERS.BYM-PN-0347
45	MAGNET LOCATION	M.ENJ-ERS-PLS-BYM-001
46	MAGNET	M.MIK-ERS-001
47	DRAIN WEDGE	M.ENJ-ERS-PLS-BYM-016
48	COVER LOCK	ARA-ERS.BYM-0013
49	LOCK BODY	YTL-ERS.BYM-KS-0072
50	COVER LOCK SPRING	M.YAY-ERS-035
51	BALL	M.MUH-021
52	LOCK KIT SPRING PLACE	YTL-ERS.BYM-KS-0073
53	FILTER COVER	M.ENJ-ERS-PLS-BYM-086
54	DISCHARGE WEDGE LOCATION	M.ENJ-ERS-PLS-BYM-112
55	TANK RESISTANCE 230V-2500W	M.ELK-RZS-BRU-BYM-028
56	RESISTANCE COVER	M.ENJ-ERS-PLS-BYM-025
57	BOILER RESISTANCE 220V-5000W	M.ELK-RZS-BRU-BYM-030
58	BOILER TANK	M.MEK-TES-BYM-BYL-001
59	WASHING PUMP HOSE	ERS.M.MEK-TES-HRT-014
60	DRAIN PUMP	M.ELK-MTR-PMP-002

UNDERCOUNTER TYPE DISHWASHER

G SPARE PART LIST-EXPLODING DRAWING



GE500ND

UNDERCOUNTER TYPE DISHWASHER

G SPARE PART LIST-EXPLODING DRAWING

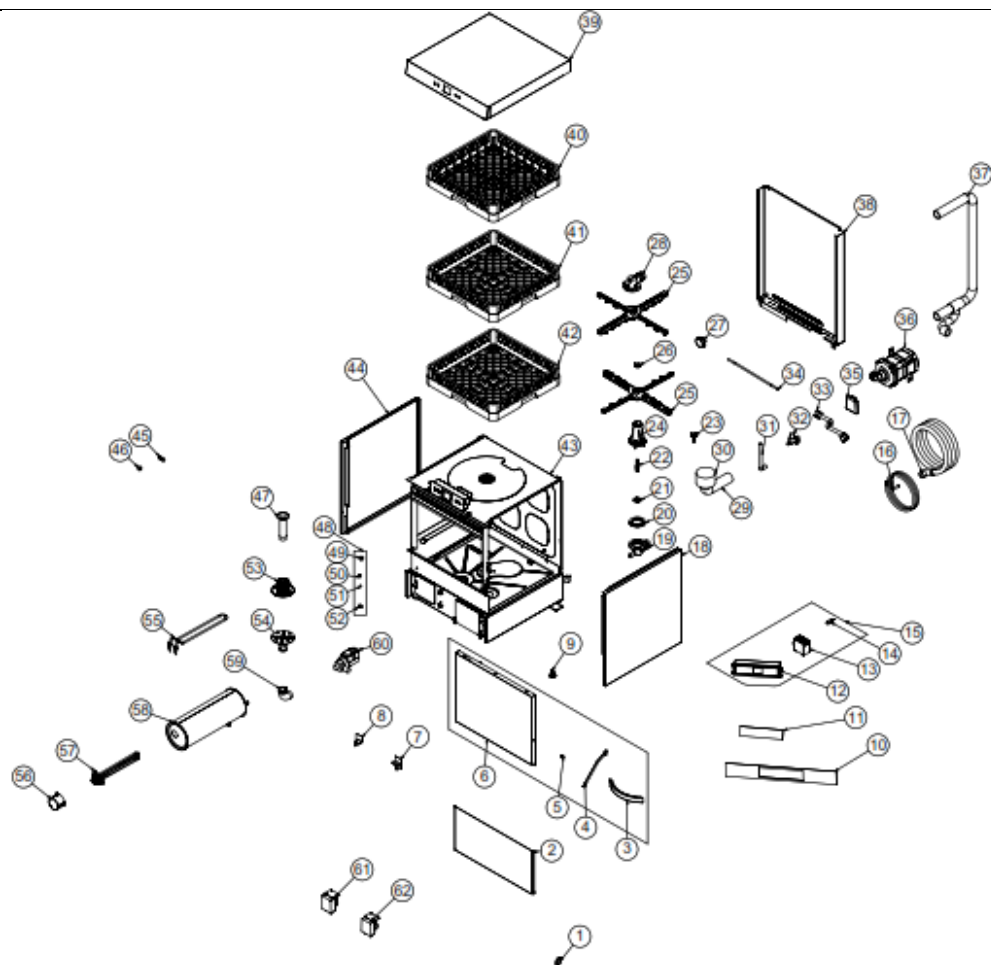
PRODUCT CODE :GE500ND		
NO	PRODUCT NAME	P. CODE
1	INTERVENTION COVER	M.MEK-TES-KLP-006
2	BOTTOM COVER SHEET	YSC-ERS.BYM-LZ-0452
3	COVER HANDLE	ERS.M.AKS-KLP-INX-003
4	TOP COVER HANDLE	YSC-ERS.BYM-LZ-0455
5	SLEEVE PART	YTL-ERS.BYM-KS-0119
6	COVER OUTER SHEET	YSC-ERS.BYM-PN-0344
7	CORNER PLASTIC RIGHT	M.ENJ-ERS-PLS-BYM-061
8	CORNER PLASTIC LEFT	M.ENJ-ERS-PLS-BYM-062
9	FOOT	M.AKS-AYK-INX-004
10	PANEL LABEL	M.AKS-ETK-LKS-ERS-BYM-009
11	PANEL LABEL	M.AKS-ETK-LKS-ERS-BYM-013
12	DIGITAL CARD	M.ELK-PNO-BYM-013
13	LC1K1210M7 CONTACTOR	ERS.M.ELK-KNT-KNT-022
14	MAGNETIC SENSOR WITHOUT LED	M.ELK-SWC-KTG-004
15	DIGITAL ELECTRICAL PANEL GROUP	M.ELK-PNO-BYM-010
16	3*2.5 MM CABLE	HEL-KB-TT-3*2,5-SYH
17	WASTE WATER HOSE	M.MEK-TES-HRT-033
18	LEFT SIDE SHEET	YSC-ERS.BYM-PN-0346
19	HOSE LOWER ELBOW	M.ENJ-ERS-PLS-BYM-096
20	SPRAY GASKET	M.ENJ-ERS-LST-019
21	PRESSURE PLASTIC	M.ENJ-ERS-PLS-BYM-059
22	SPINNING SPINDLE	YTL-ERS.BYM-KS-0001
23	FILTER NUT	M.ENJ-ERS-PLS-BYM-113
24	LOWER FOUNTAIN CENTER	M.ENJ-ERS-PLS-BYM-020
25	FOUNTAIN	M.ENJ-ERS-PLS-BYM-053
26	SPRAY SCREW	M.ENJ-ERS-PLS-BYM-070
27	PROCESTAT FLOAT	M.ELK-MUH-001
28	HOSE UPPER ELBOW	M.ENJ-ERS-PLS-BYM-097
29	PUMP HOSE	ERS.M.MEK-TES-HRT-002
30	FILTER	M.ENJ-ERS-PLS-BYM-041

UNDERCOUNTER TYPE DISHWASHER

31	VALVE HOSE	ERS.M.MEK-TES-HRT-006
32	VALVE (14 LT)	M.ELK-SLN-PLS-001
33	HOSE 150CM	ERS.M.MEK-TES-HRT-011
34	PROCESTAT HOSE	HTS-HRT-008
35	AIR TRAP	M.ENJ-ERS-PLS-BYM-019
36	WASHING MOTOR	M.ELK-MTR-PMP-001
37	WATER INLET HOSE	M.MEK-TES-HRT-001
38	BACK COVER SHEET	YSC-ERS.BYM-PN-0010
39	TOP COVER SHEET	YSC-ERS.BYM-LZ-0289
40	GLASS BASKET	BB.01
41	SPOON FORK BASKET	KC.01
42	PLATE BASKET	TB.01
43	CHASSIS	-
44	RIGHT SIDE SHEET	YSC-ERS.BYM-PN-0347
45	MAGNET LOCATION	M.ENJ-ERS-PLS-BYM-001
46	MAGNET	M.MIK-ERS-001
47	DRAIN WEDGE	M.ENJ-ERS-PLS-BYM-016
48	COVER LOCK	ARA-ERS.BYM-0013
49	LOCK BODY	YTL-ERS.BYM-KS-0072
50	COVER LOCK SPRING	M.YAY-ERS-035
51	BALL	M.MUH-021
52	LOCK KIT SPRING PLACE	YTL-ERS.BYM-KS-0073
53	FILTER COVER	M.ENJ-ERS-PLS-BYM-086
54	DISCHARGE WEDGE LOCATION	M.ENJ-ERS-PLS-BYM-112
55	TANK RESISTANCE 230V-2500W	M.ELK-RZS-BRU-BYM-028
56	RESISTANCE COVER	M.ENJ-ERS-PLS-BYM-025
57	BOILER RESISTANCE 220V-5000W	M.ELK-RZS-BRU-BYM-030
58	BOILER TANK	M.MEK-TES-BYM-BYL-001
59	WASHING PUMP HOSE	ERS.M.MEK-TES-HRT-014
60	DRAIN PUMP	M.ELK-MTR-PMP-002
61	DETERGENT PUMP	M.ELK-MTR-PMP-006
62	POLISHING PUMP	M.ELK-MTR-PMP-007

UNDERCOUNTER TYPE DISHWASHER

G SPARE PART LIST-EXPLODING DRAWING



500-380-SDF

UNDERCOUNTER TYPE DISHWASHER

G SPARE PART LIST-EXPLODING DRAWING

PRODUCT CODE :500-380-SDF		
NO	PRODUCT NAME	P. CODE
1	INTERVENTION COVER	M.MEK-TES-KLP-006
2	BOTTOM COVER SHEET	YSC-ERS.BYM-LZ-0452
3	COVER HANDLE	ERS.M.AKS-KLP-INX-003
4	TOP COVER HANDLE	YSC-ERS.BYM-LZ-0455
5	SLEEVE PART	YTL-ERS.BYM-KS-0119
6	COVER OUTER SHEET	YSC-ERS.BYM-PN-0344
7	CORNER PLASTIC RIGHT	M.ENJ-ERS-PLS-BYM-061
8	CORNER PLASTIC LEFT	M.ENJ-ERS-PLS-BYM-062
9	FOOT	M.AKS-AYK-INX-004
10	PANEL LABEL	M.AKS-ETK-LKS-ERS-BYM-009
11	PANEL LABEL	M.AKS-ETK-LKS-ERS-BYM-013
12	DIGITAL CARD	M.ELK-PNO-BYM-013
13	LC1K1210M7 CONTACTOR	ERS.M.ELK-KNT-KNT-022
14	MAGNETIC SENSOR WITHOUT LED	M.ELK-SWC-KTG-004
15	DIGITAL PANEL GROUP 380V	M.ELK-PNO-BYM-018
16	3*2.5 MM CABLE	HEL-KB-TT-3*2,5-SYH
17	WASTE WATER HOSE	M.MEK-TES-HRT-033
18	LEFT SIDE SHEET	YSC-ERS.BYM-PN-0346
19	HOSE LOWER ELBOW	M.ENJ-ERS-PLS-BYM-096
20	SPRAY GASKET	M.ENJ-ERS-LST-019
21	PRESSURE PLASTIC	M.ENJ-ERS-PLS-BYM-059
22	SPINNING SPINDLE	YTL-ERS.BYM-KS-0001
23	FILTER NUT	M.ENJ-ERS-PLS-BYM-113
24	LOWER FOUNTAIN CENTER	M.ENJ-ERS-PLS-BYM-020
25	FOUNTAIN	M.ENJ-ERS-PLS-BYM-053
26	SPRAY SCREW	M.ENJ-ERS-PLS-BYM-070
27	PROCESTAT FLOAT	M.ELK-MUH-001
28	HOSE UPPER ELBOW	M.ENJ-ERS-PLS-BYM-097
29	PUMP HOSE	ERS.M.MEK-TES-HRT-002
30	FILTER	M.ENJ-ERS-PLS-BYM-041
31	VALVE HOSE	ERS.M.MEK-TES-HRT-006

UNDERCOUNTER TYPE DISHWASHER

32	VALVE (14 LT)	M.ELK-SLN-PLS-001
33	HOSE 150CM	ERS.M.MEK-TES-HRT-011
34	PROCESTAT HOSE	HTS-HRT-008
35	AIR TRAP	M.ENJ-ERS-PLS-BYM-019
36	WASHING MOTOR	M.ELK-MTR-PMP-001
37	WATER INLET HOSE	M.MEK-TES-HRT-001
38	BACK COVER SHEET	YSC-ERS.BYM-PN-0010
39	TOP COVER SHEET	YSC-ERS.BYM-LZ-0289
40	GLASS BASKET	BB.01
41	SPOON FORK BASKET	KC.01
42	PLATE BASKET	TB.01
43	CHASSIS	-
44	RIGHT SIDE SHEET	YSC-ERS.BYM-PN-0347
45	MAGNET LOCATION	M.ENJ-ERS-PLS-BYM-001
46	MAGNET	M.MIK-ERS-001
47	DRAIN WEDGE	M.ENJ-ERS-PLS-BYM-016
48	COVER LOCK	ARA-ERS.BYM-0013
49	LOCK BODY	YTL-ERS.BYM-KS-0072
50	COVER LOCK SPRING	M.YAY-ERS-035
51	BALL	M.MUH-021
52	LOCK KIT SPRING PLACE	YTL-ERS.BYM-KS-0073
53	FILTER COVER	M.ENJ-ERS-PLS-BYM-086
54	DISCHARGE WEDGE LOCATION	M.ENJ-ERS-PLS-BYM-112
55	TANK RESISTANCE 230V-2500W	M.ELK-RZS-BRU-BYM-028
56	RESISTANCE COVER	M.ENJ-ERS-PLS-BYM-025
57	BOILER RESISTANCE 220V-5000W	M.ELK-RZS-BRU-BYM-030
58	BOILER TANK	M.MEK-TES-BYM-BYL-001
59	WASHING PUMP HOSE	ERS.M.MEK-TES-HRT-014
60	DRAIN PUMP	M.ELK-MTR-PMP-002
61	DETERGENT PUMP	M.ELK-MTR-PMP-006
62	POLISHING PUMP	M.ELK-MTR-PMP-007

UNDERCOUNTER TYPE DISHWASHER

H ELECTRIC CIRCUIT SCHEMA

