

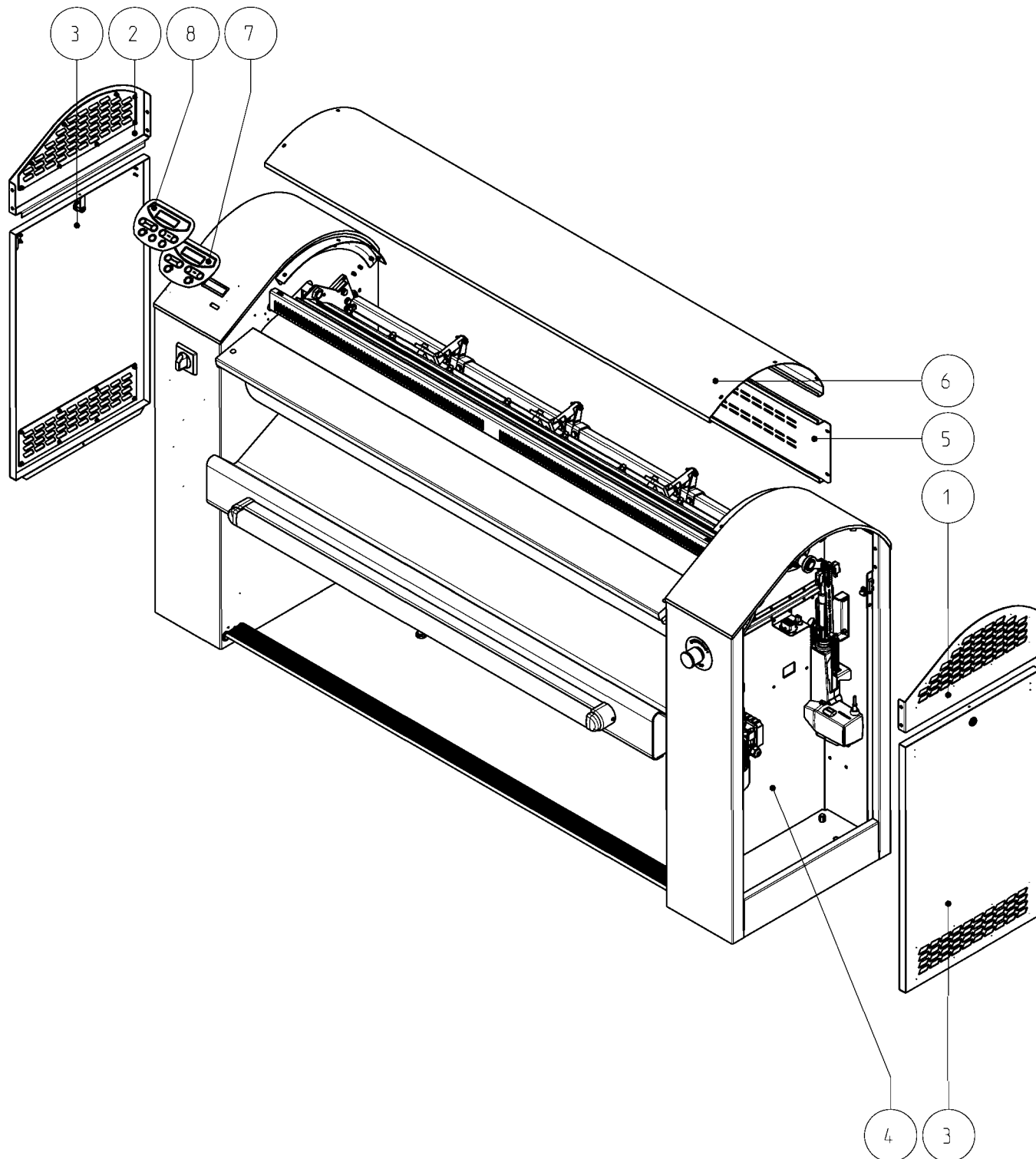


Exploded View Drawing

MEI1500

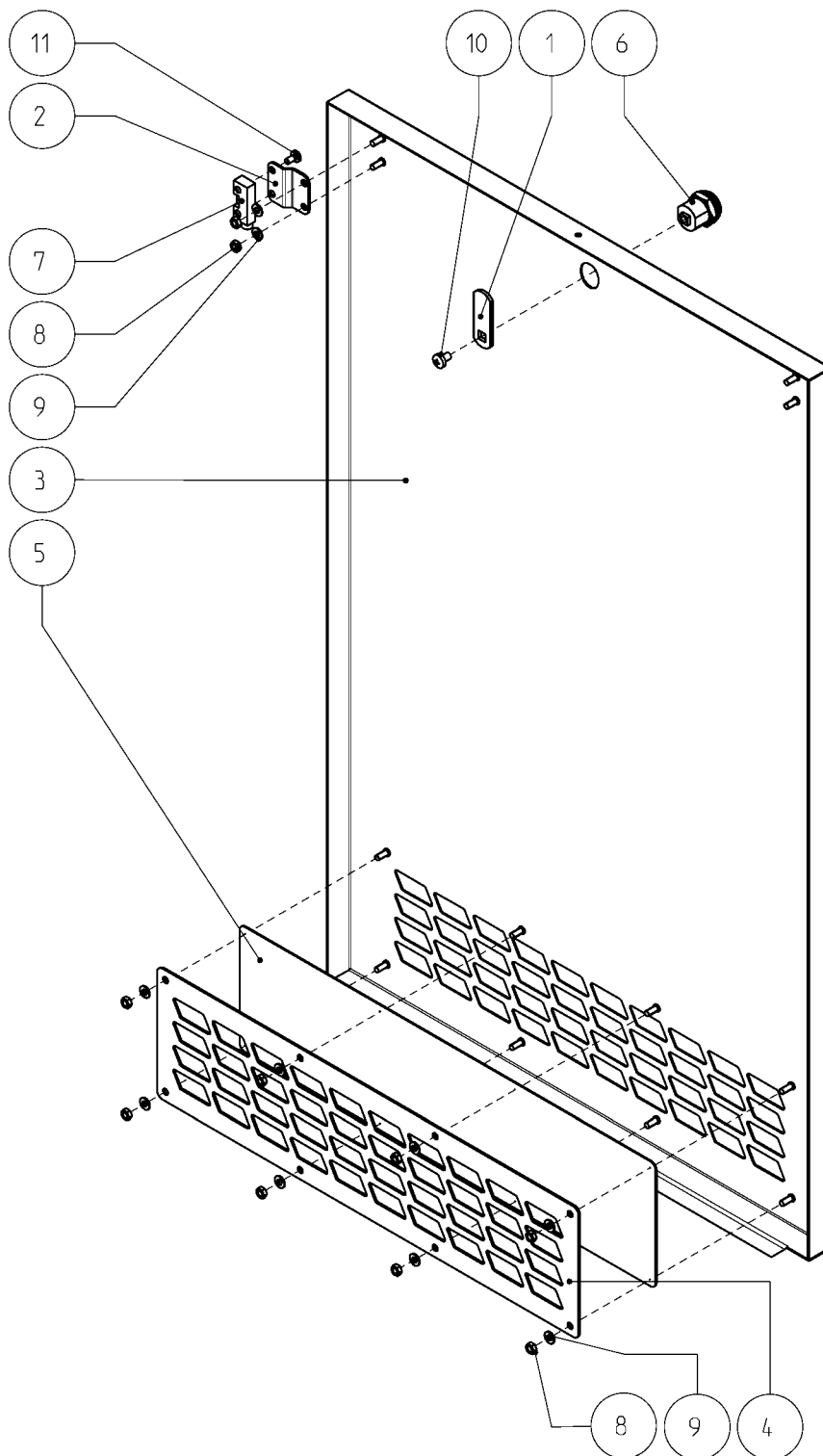


No.	Part number	Description	Qty.
1	1080913X	Top right side	1
2	1080914X	Top left side	1
3	1080915X	Side panel	2
4	1080922X	Mechanical assembly	1
5	1080959X	Rear part	1
6	2030783B	Protective cover	1
7	4080201X	Membrane keyboard	1
8	4080203X	Membrane keyboard	1

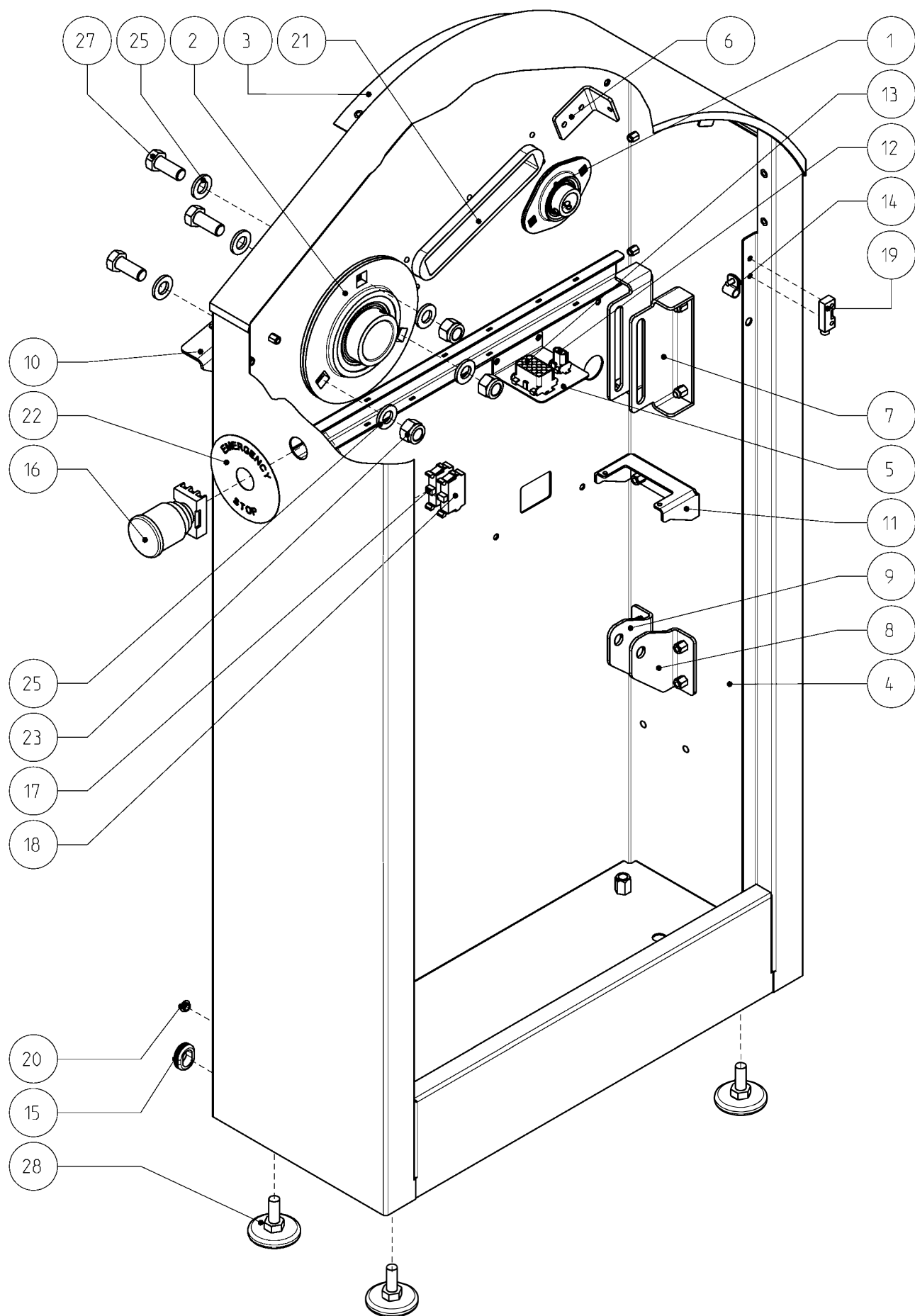


Description Title	Drawing number	Rev.	Page
MEI1500	1080921	X	1/1
All rights to this design are reserved - Reprinting, even in part, is prohibited.		All rights reserved - Reproduction of this document, in whole or in part, is prohibited.	

No.	Part number	Description	Qty.
1	0000ELDR46	Fixing plate	1
2	2031123X	Mounting bracket	1
3	2051124X	Side panel	1
4	2051201X	Filter	1
5	2051204X	Filter holder	1
6	2950BOXTR6P5	Handle	1
7	2950MAGNE302	Magnet	1
8	4936DAZ0004M	Nut	10
9	4936RPZ0004M	Sealing cap	10
10	4936VIC TC508	Phillips screw	1
11	4936VITCT4X8	Cylinder head screw	2



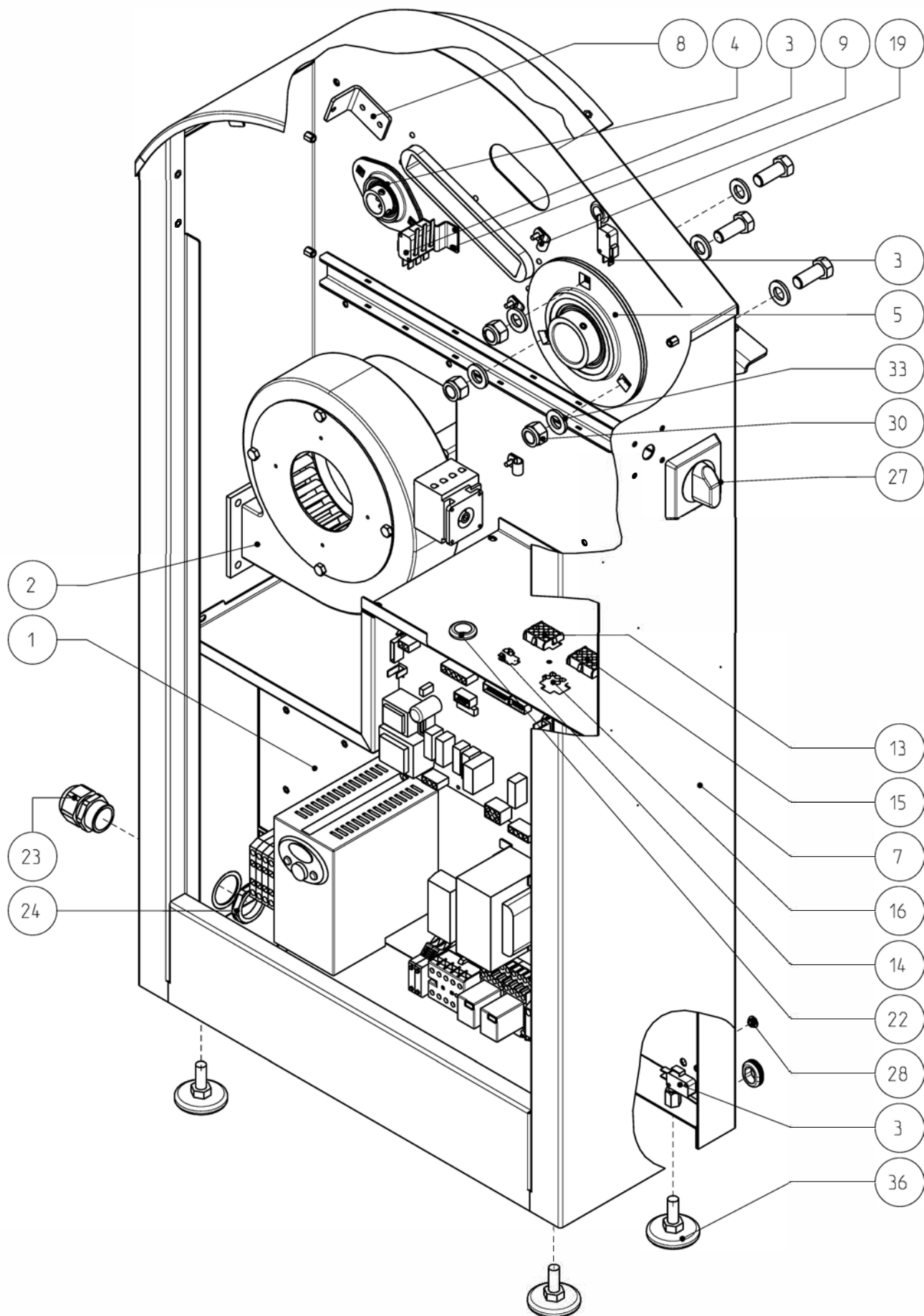
Description Title	Drawing number	Rev.	Page
MEI1500	1080915	X	1/1
All rights to this design are reserved - Reprinting, even in part, is prohibited.		All rights reserved - Reproduction of this document, in whole or in part, is prohibited.	



Description Title	Drawing number	Rev.	Page
MEI1500	1080929	X	1/2
All rights to this design are reserved - Reprinting, even in part, is prohibited.		All rights reserved - Reproduction of this document, in whole or in part, is prohibited.	

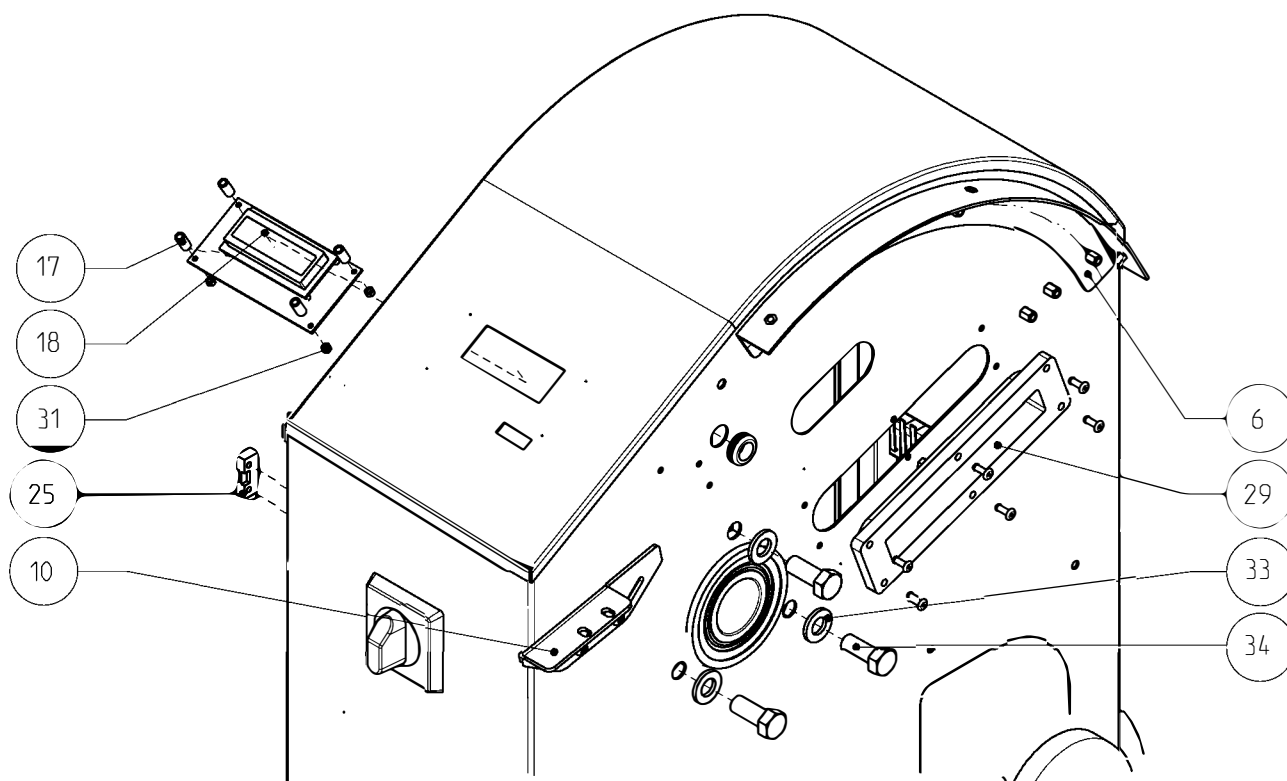
No.	Part number	Description	Qty.
1	1937CUPFT204	Flanged bearing	1
2	1937CUSPF80Y	Flanged bearing	1
3	2030775B	Bracket	1
4	2051020B	Right side panel	1
5	2080901X	Bracket	1
6	2080902X	Mounting bracket	1
7	2080920X	Guide rail	2
8	2080924X	Right bracket	1
9	2080925X	Left bracket	1
10	2080967X	Right mounting bracket	1
11	2081004X	Bracket	1
12	2950CONF02V	2-pin plug	1
13	2950CONF05V	12-pin plug	1
14	2950FERCRN05	Cable clamp	4
15	2950PASC A013	Rubber bushing	1
16	2950PULEM248	Red emergency button	1
17	2950PULEM492	NC contact	1
18	2950PULEM494	NC contact	1
19	2950SENSM510	Magnetic sensor	1
20	3940CMCM0602	Clamp	1
21	4020301X	Sliding guide	1
22	4021101X	Emergency disk	1
23	4936DAFA012M	Locknut	3
24	4936RIZ1004M	Aluminum rivet	6
25	4936RPZ0012M	Washer	6
26	4936VITB0616	Cylinder head screw	4
27	4936VITZX123	Hex-head screw	3
28	4980760X	Adjustable black plastic feet	4

Description Title	Drawing number	Rev.	Page
MEI1500	1080929	X	2/2
All rights to this design are reserved - Reprinting, even in part, is prohibited.		All rights reserved - Reproduction of this document, in whole or in part, is prohibited.	

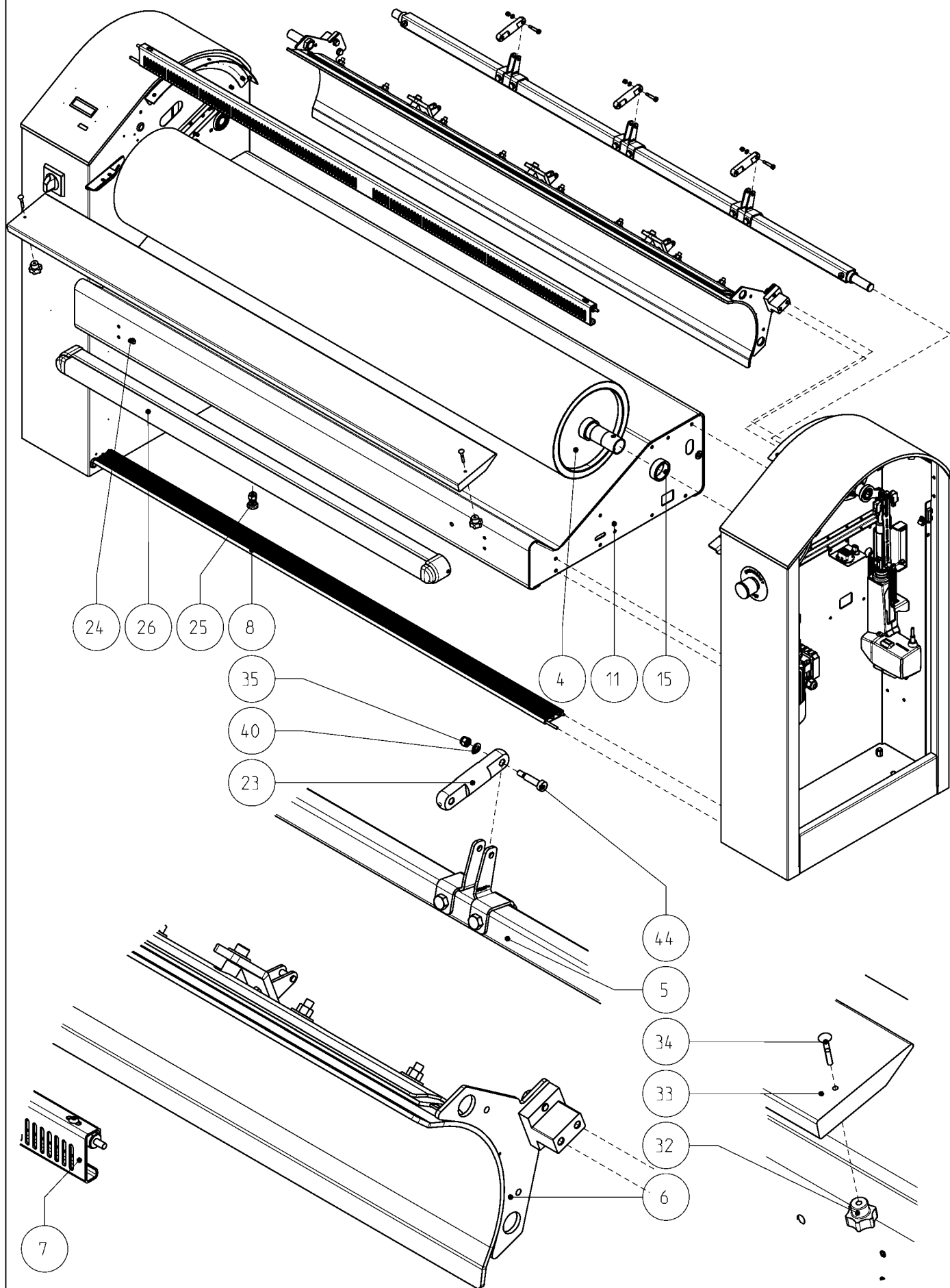


Description Title	Drawing number	Rev.	Page
MEI1500	1080930	X	1/2
All rights to this design are reserved - Reprinting, even in part, is prohibited.		All rights reserved - Reproduction of this document, in whole or in part, is prohibited.	

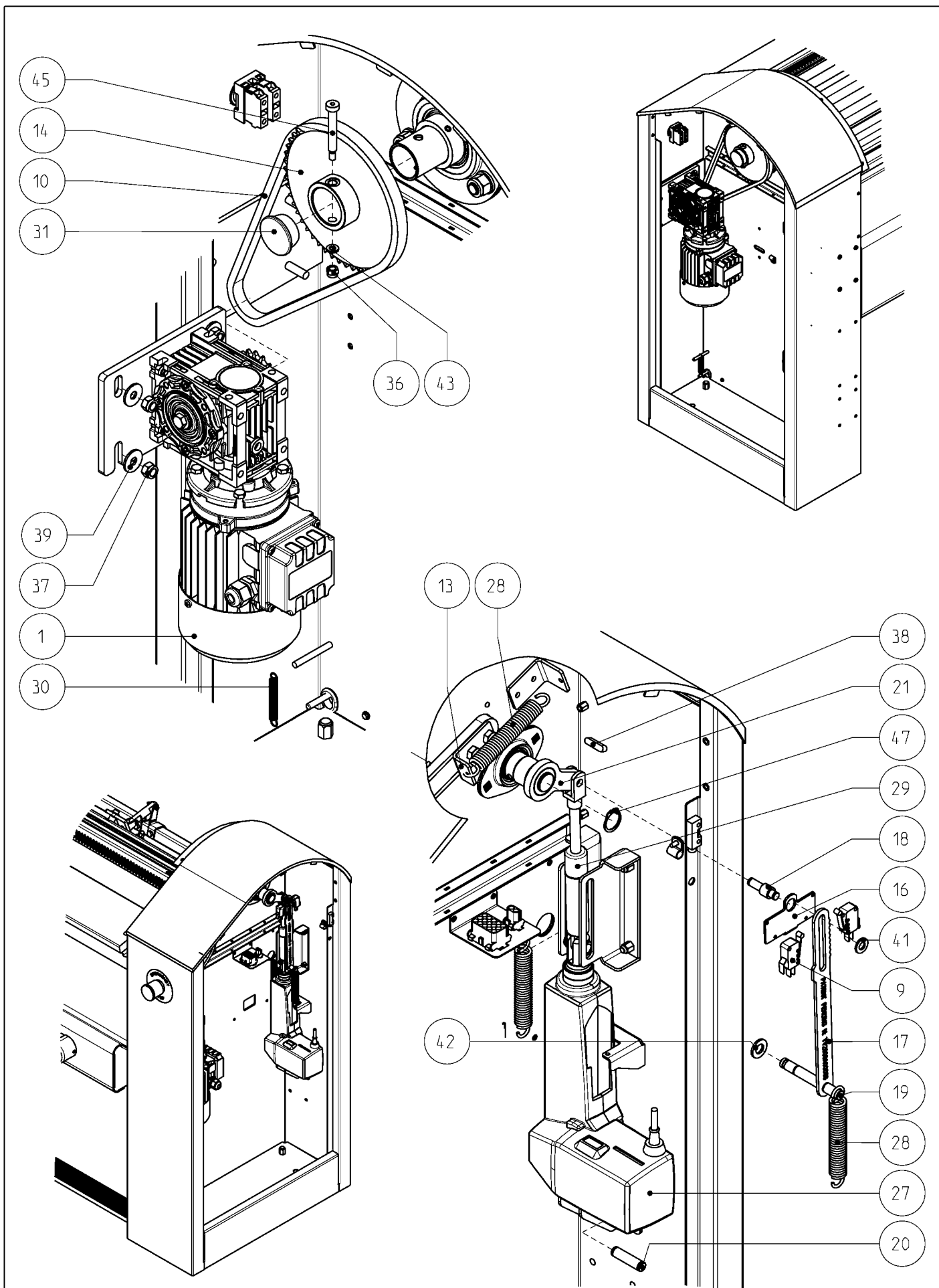
No.	Part number	Description	Qty.
1	1081103X	Electrical system assembly	1
2	1732VENT0160X	Fan	1
3	1806KMISP316	Microswitch	5
4	1937CUPFT204	Flanged bearing	1
5	1937CUSPF80Y	Flanged bearing	1
6	2030775B	Bracket	1
7	2051021B	Left side panel	1
8	2080902X	Mounting bracket	1
9	2080926X	Bracket	1
10	2080966X	Left bracket	1
11	2081001X	Plug holder	1
12	2081002X	Cover	1
13	2950C0480709	12-pin plug	1
14	2950CONFE02V	2-pin plug	1
15	2950CONFE15V	12-pin plug	1
16	2950CONFE6V	6-pin plug	1
17	2950DISC1127	Spacer	4
18	2950DISPLIM7	Display card	1
19	2950FERCRN05	Cable clamp	5
20	2950FERCRN08	Cable clamp	2
21	2950PASC A013	Rubber bushing	3
22	2950PASC A256	Rubber bushing	1
23	2950PG021	Plastic cable gland	1
24	2950PGD21	Nut	1
25	2950SENSM510	Magnetic sensor	1
26	2950SEZ16219	Switch disconnecter	1
27	2950SEZ0H136	Knob	1
28	3940CMCM0602	Clamp	1
29	4020301X	Sliding guide	1
30	4936DAFA012M	Locknut	3
31	4936DAZ0003M	Nut	6
32	4936RIZ1004M	Aluminum rivet	6
33	4936RPZ0012M	Washer	6
34	4936VITZX123	Hex-head screw	3
35	4936VTEC1512	Hexagon socket screw	2
36	4980760X	Adjustable black plastic feet	4



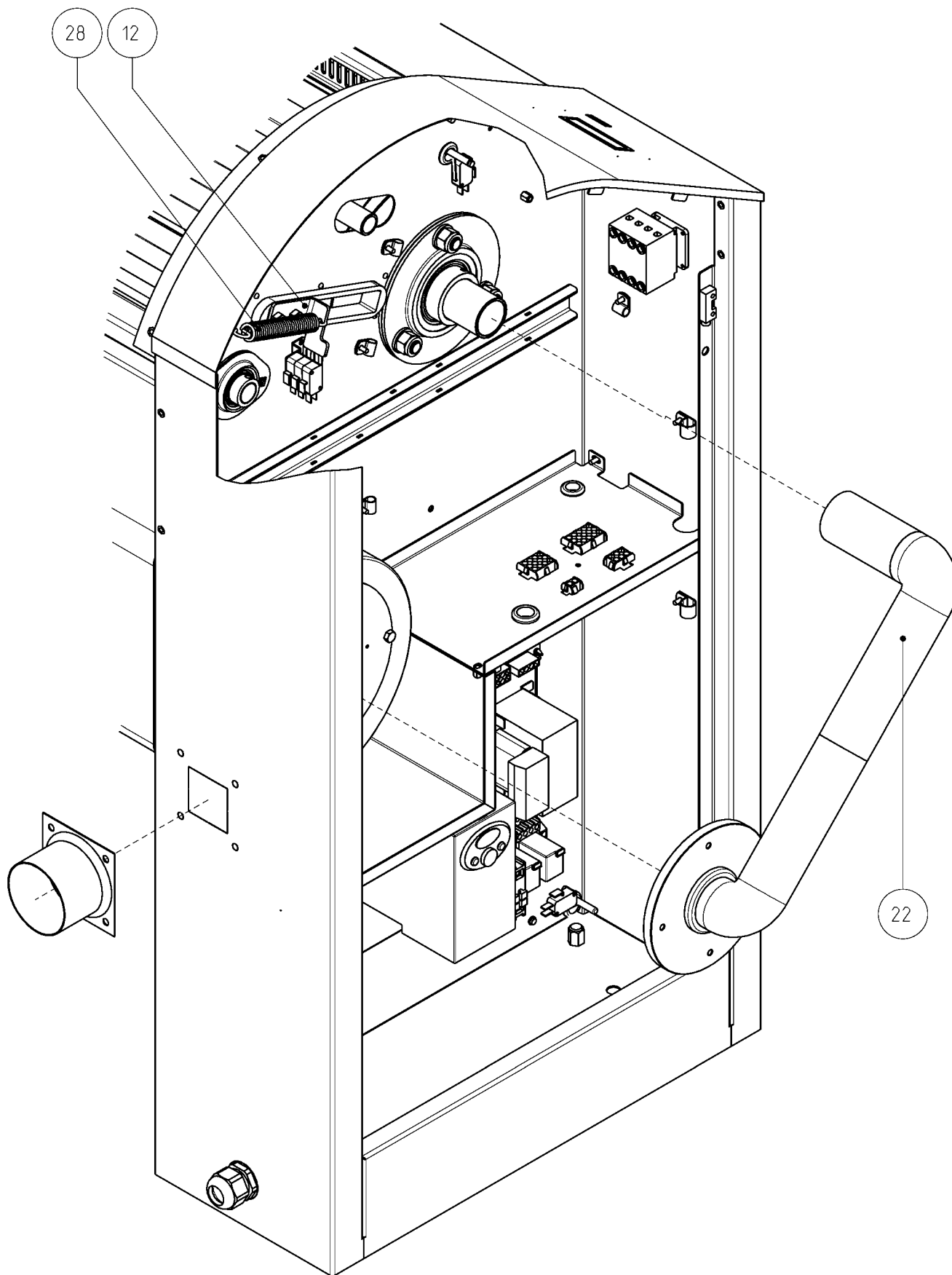
Description Title	Drawing number	Rev.	Page
MEI1500	1080930	X	2/2
All rights to this design are reserved - Reprinting, even in part, is prohibited.		All rights reserved - Reproduction of this document, in whole or in part, is prohibited.	



Description Title	Drawing number	Rev.	Page
MEI1500	1080922	X	1/2
All rights to this design are reserved - Reprinting, even in part, is prohibited.		All rights reserved - Reproduction of this document, in whole or in part, is prohibited.	



Description Title	Drawing number	Rev.	Page
MEI1500	1080922	X	2/4
All rights to this design are reserved - Reprinting, even in part, is prohibited.		All rights reserved - Reproduction of this document, in whole or in part, is prohibited.	

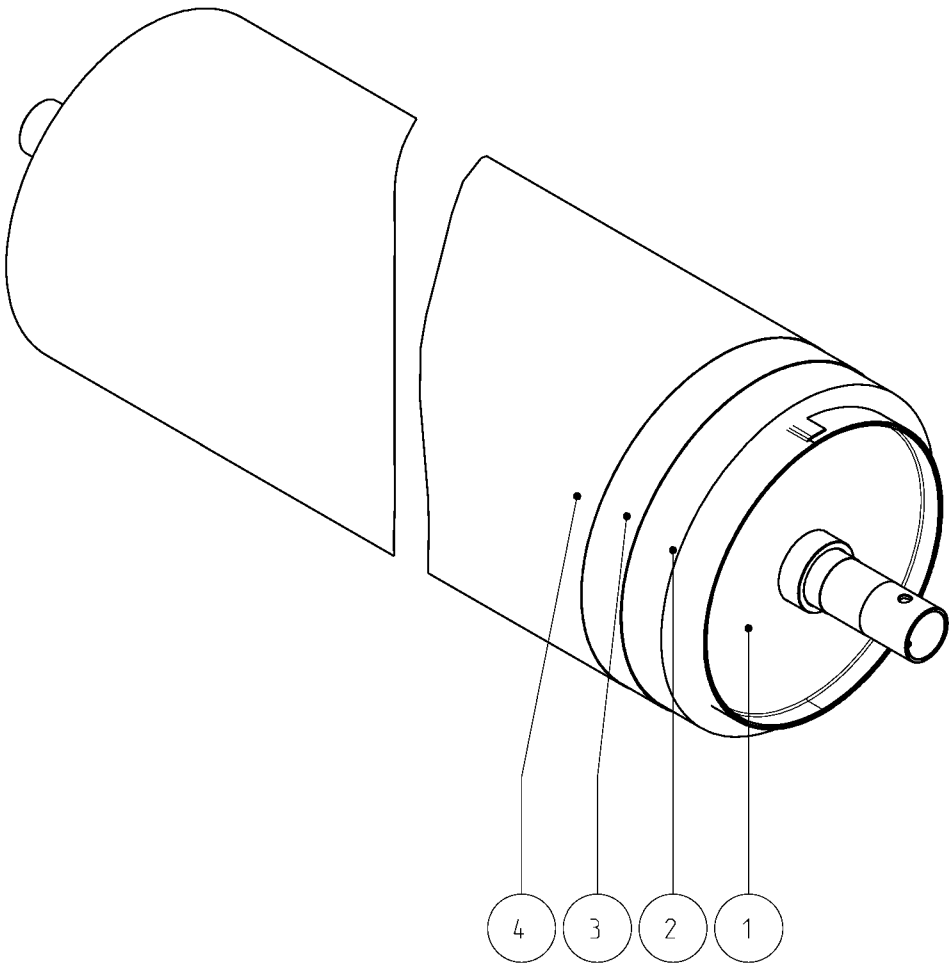


Description Title	Drawing number	Rev.	Page
MEI1500	1080922	X	3/4
All rights to this design are reserved - Reprinting, even in part, is prohibited.	All rights reserved - Reproduction of this document, in whole or in part, is prohibited.		

No.	Part number	Description	Qty.
1	1051104A	Motor	1
2	1080929X	Right assembly	1
3	1080930X	Left assembly	1
4	1080933X	Roller	1
5	1080939X	Torsion bar	1
6	1080949X	Suction pipe	1
7	1080955X	Handle	1
8	1081106X	Pedal	1
9	1806KMIMC 316	Microswitch	2
10	1943CAP082C 0	Chain	1
11	2030766C	Slide	1
12	2080903X	Bracket	1
13	2080904X	Bracket	1
14	2080914X	Crown gear	1
15	2080917X	Spacer	1
16	2080918X	Bracket	1
17	2080919X	Bracket	1
18	2080921X	Spring bolt	1
19	2080922X	Bolt	1
20	2080923X	Base plate	1
21	2080929X	Connecting rod	1
22	2080973X	Intake manifold	1
23	2080974X	Crank	3
24	2950PASC AG008	Rubber bushing	1
25	2950PISGN607	Spring plunger	1
26	2950PS6003NR	Safety edge	1
27	2953ATTULA31	Actuator	1
28	3940M01410115	Spring	4
29	3940M02210055	Gas spring	1
30	3940M0781046	Traction spring	1
31	3940TAGPN300	Lid	1
32	3940VB030	Wheel	2
33	4030305A	Wood strip	1
34	4936BUL TT535	Screw	2
35	4936DAFA005M	Locknut	3
36	4936DAFA006M	Locknut	1
37	4936DAFA008M	Locknut	4
38	4936LIN06625	Plate	1
39	4936RGZ08X24	Washer	4
40	4936RPZ0005M	Washer	3
41	4936RPZ0008M	Washer	1
42	4936RPZ0010M	Washer	2
43	4936RPZ1206M	Washer	1
44	4936VIT50620	TCEI screw	3
45	4936VIT60850	TCEI screw	1
46	4936VIZ08X20	Hex-head screw	4
47	4939ANELSSP2	Circlip	1

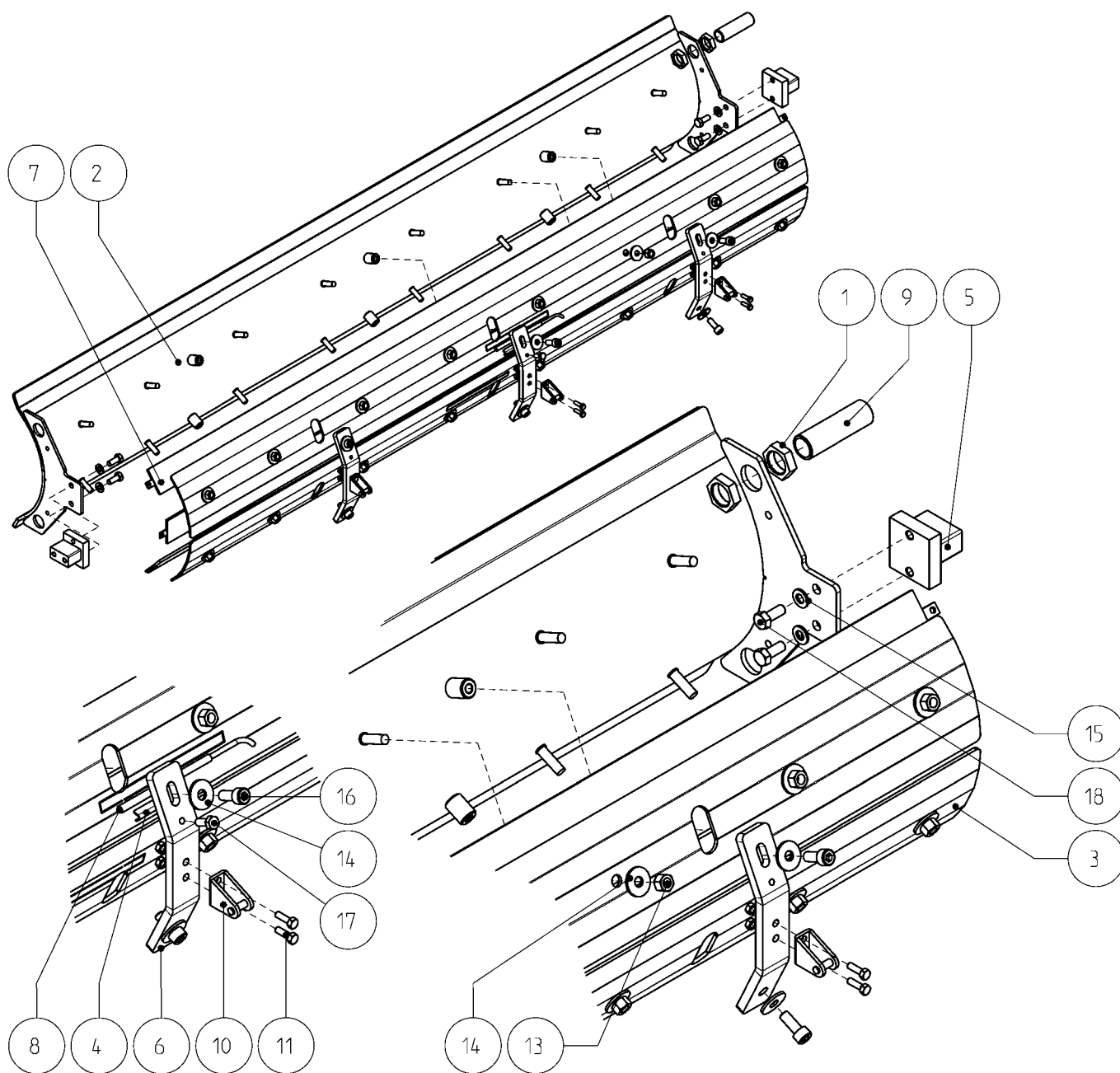
Description Title		Drawing number	Rev.	Page
MEI1500		1080922	X	4/4
All rights to this design are reserved - Reprinting, even in part, is prohibited.		All rights reserved - Reproduction of this document, in whole or in part, is prohibited.		

No.	Part number	Description	Qty.
1	2051102B	Roller	1
2	3935LANACMAN	Steel wool	1
3	3941MOLL1615	Molton overlay	1
4	3941TEC01616	Cloth	1



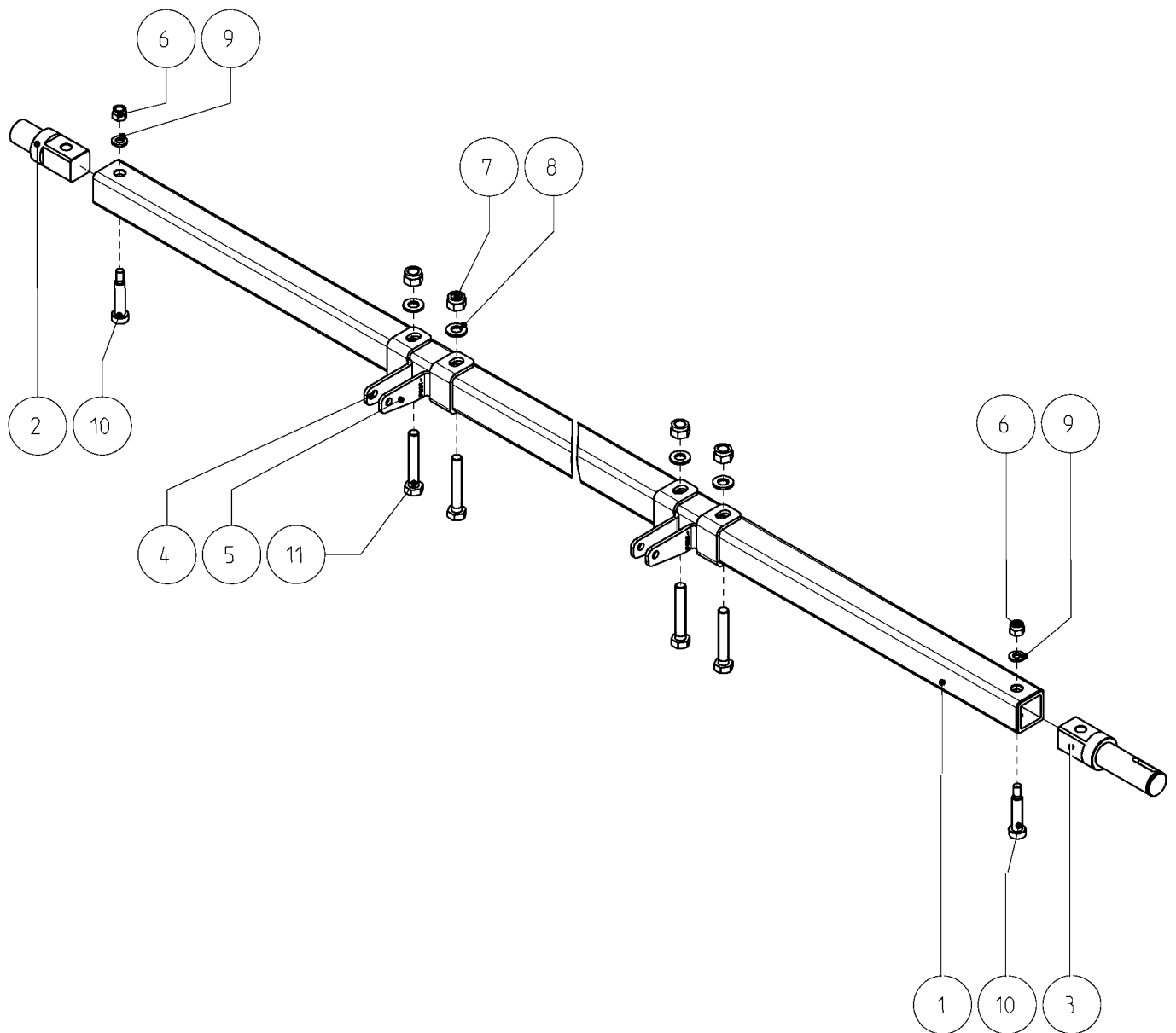
Description Title	Drawing number	Rev.	Page
MEI1500	1080933	X	1/1
All rights to this design are reserved - Reprinting, even in part, is prohibited.		All rights reserved - Reproduction of this document, in whole or in part, is prohibited.	

No.	Part number	Description	Qty.
1	1960GHZNC 012	Ring nut	2
2	2030302C	Shell	1
3	2030425A	Basin	2
4	2040407X	Bracket	1
5	2080905X	Side part	2
6	2080968X	Plate	3
7	2950RM250140	Heating element	3
8	2950SENS2PT1	Temperature probe	1
9	3030343A	Cable tray	1
10	3940CERNI603	Hinge	3
11	4936BUZ1605M	Hex-head screw	6
12	4936DAZ0005M	Nut	6
13	4936DAZ0008M	Nut	16
14	4936RGZ08X24	Washer	22
15	4936RPZ0008M	Washer	4
16	4936VITF820	Socket head screw	6
17	4936VIT06X16	Hex-head screw	1
18	4936VIZ08X20	Hex-head screw	4



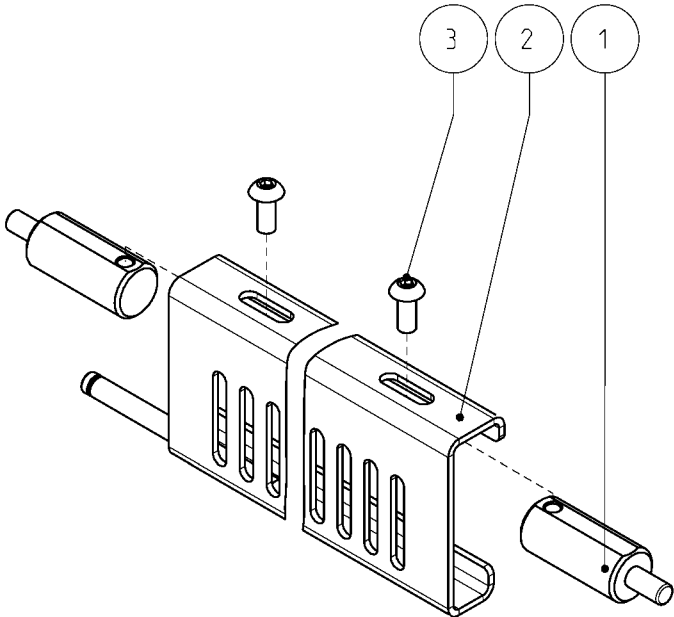
Description Title	Drawing number	Rev.	Page
MEI1500	1080949	X	1/1
All rights to this design are reserved - Reprinting, even in part, is prohibited.		All rights reserved - Reproduction of this document, in whole or in part, is prohibited.	

No.	Part number	Description	Qty.
1	2080909X	Torsion bar	1
2	2080912A	Impeller bolt	1
3	2080913A	Bolt	1
4	2080927X	Bracket	3
5	2080928X	Bracket	3
6	4936DAFA006M	Locknut	2
7	4936DAFA008M	Locknut	6
8	4936RPZ0008M	Washer	6
9	4936RPZ1206M	Washer	2
10	4936VIT60830	TCEI screw	2
11	4936VITZN850	Hex-head screw	6



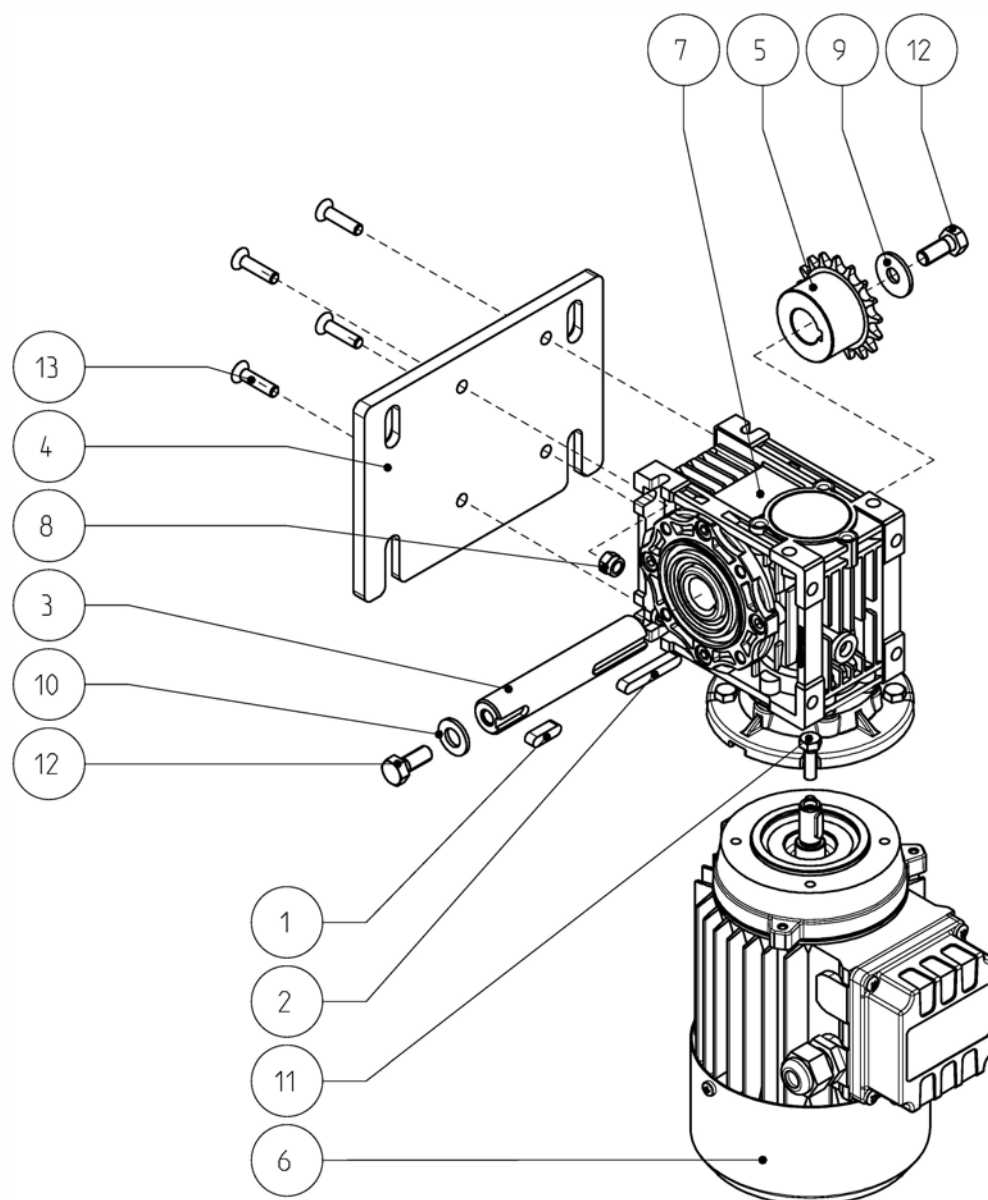
Description Title	Drawing number	Rev.	Page
MEI1500	1080939	X	1/1
All rights to this design are reserved - Reprinting, even in part, is prohibited.		All rights reserved - Reproduction of this document, in whole or in part, is prohibited.	

No.	Part number	Description	Qty.
1	2030404A	Handle bar	2
2	2030407B	Protective grid	1
3	4936VTEC I512	Hexagon socket screw	2



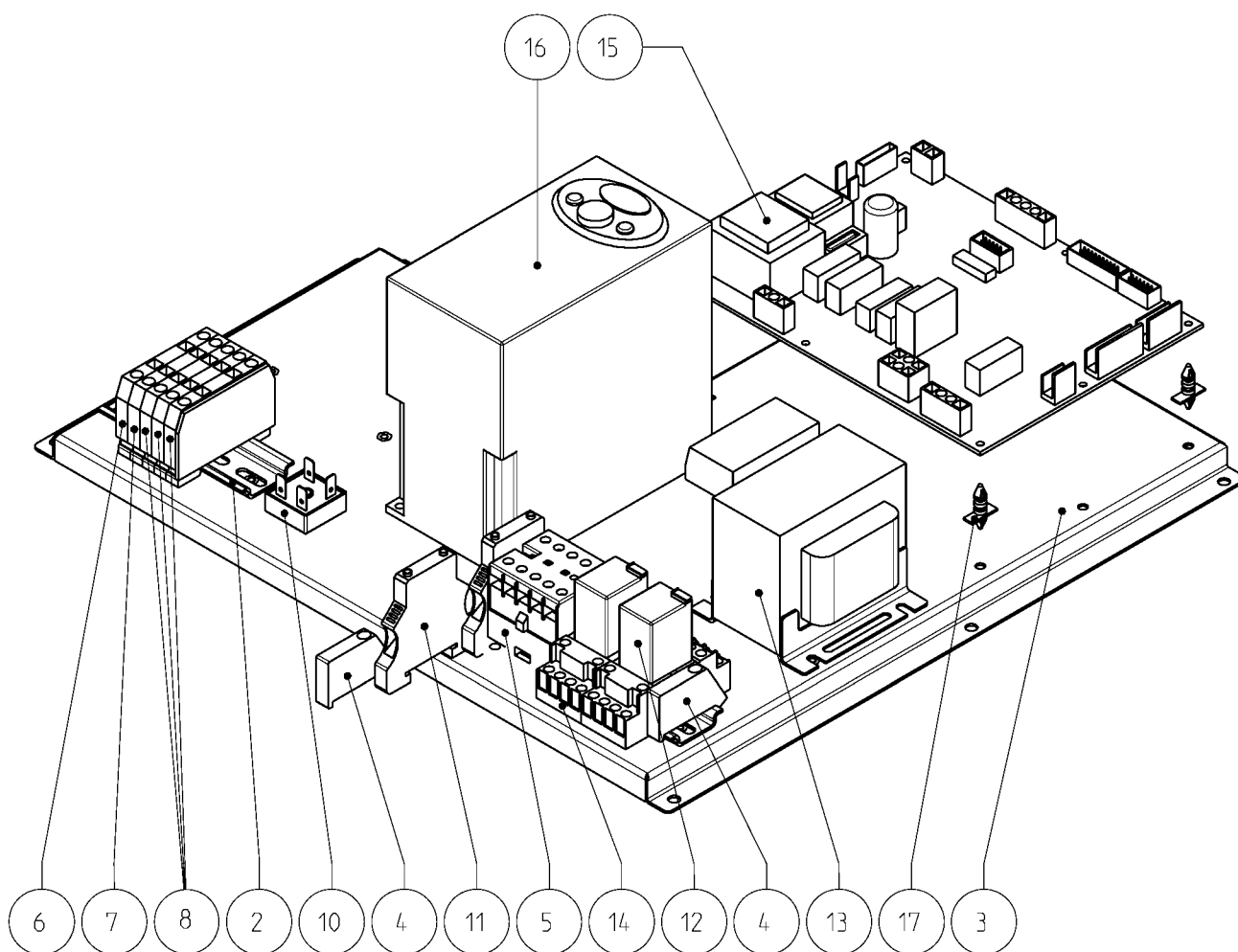
Description Title	Drawing number	Rev.	Page
MEI1500	1080955	X	1/1
All rights to this design are reserved - Reprinting, even in part, is prohibited.		All rights reserved - Reproduction of this document, in whole or in part, is prohibited.	

No.	Part number	Description	Qty.
1	0936CH060620	Key	1
2	0936CH060640	Key	1
3	2030604X	Gear shaft	1
4	2051023B	Plate	1
5	2080916X	Gear	1
6	2955MOTM63A2	Motor	1
7	2955RNMVR040	Worm gear	1
8	4936DAFA006M	Locknut	4
9	4936RGZ08X24	Washer	1
10	4936RPZ0010M	Washer	1
11	4936VIT06X20	Hex-head screw	4
12	4936VIZ08X20	Hex-head screw	2
13	4936VSE1256M	Hexagon socket screw	4



Description Title	Drawing number	Rev.	Page
MEI1500	1051104	A	1/1
All rights to this design are reserved - Reprinting, even in part, is prohibited.		All rights reserved - Reproduction of this document, in whole or in part, is prohibited.	

No.	Part number	Description	Qty.
1	2080943X	Electrical unit	1
2	2080944X	Plate	1
3	2081003X	Plate	1
4	2950FERMOREW	Clamp holder	2
5	2950MINM0408	Contacteur	1
6	2950MORB6WEI	Terminal (blue)	1
7	2950MORG6WEI	Terminal (green / yellow)	1
8	2950MORM6WEI	Terminal (brown)	3
9	2950PIATE	End plate	1
10	2950POND2508	Diode bridge	1
11	2950PORT1011	Fuse holder	2
12	2950RELMIZG2	Mini relay	2
13	2950TR100400	Transformer	1
14	2950ZOCES152	Mini relay socket	2
15	2952SCHESIM7	Electronic board	1
16	2955A374IC5	Inverter	1
17	3940DISPL6MM	Plastic spacer	4



Description Title	Drawing number	Rev.	Page
MEI1500	1081103	X	1/1
All rights to this design are reserved - Reprinting, even in part, is prohibited.		All rights reserved - Reproduction of this document, in whole or in part, is prohibited.	